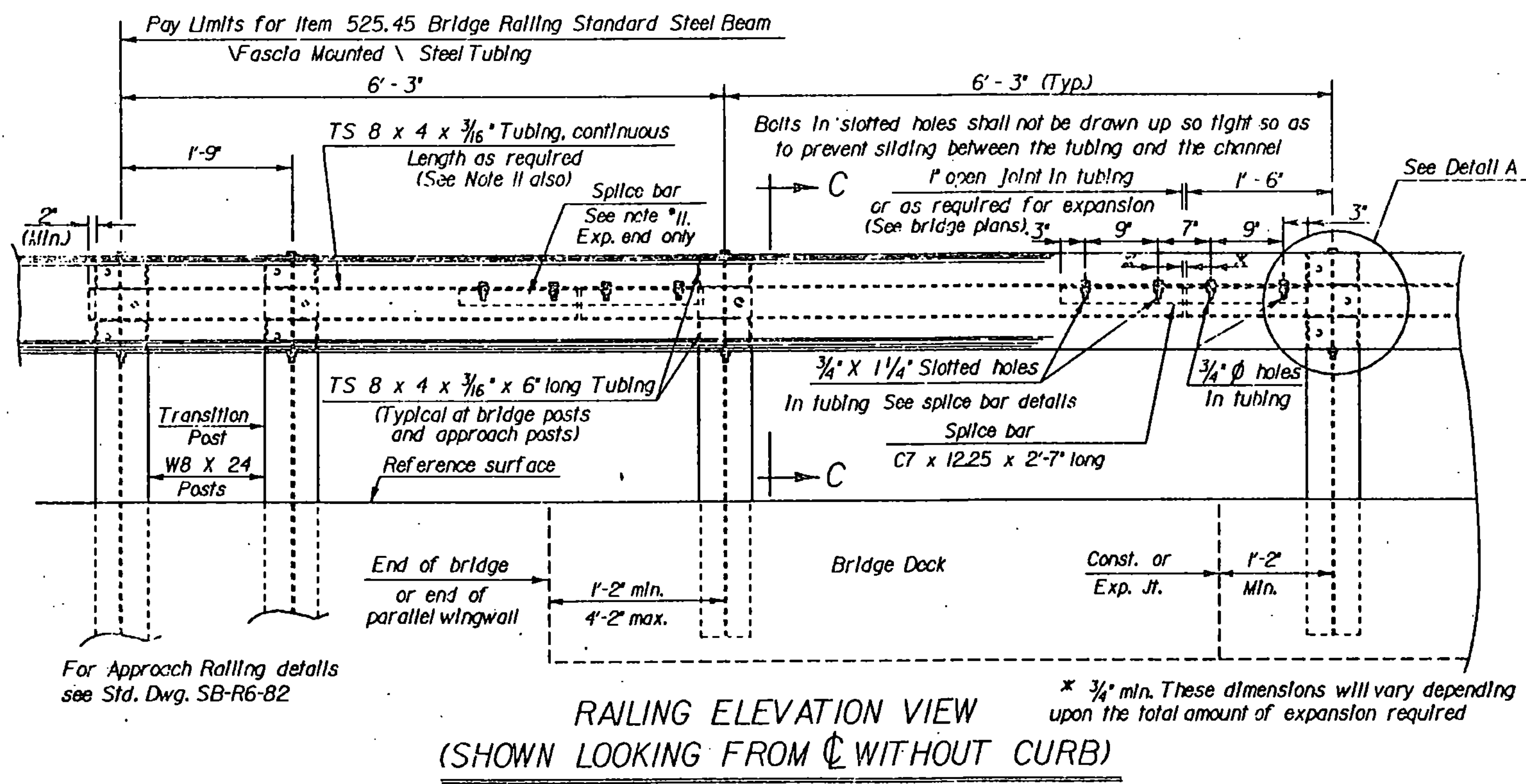
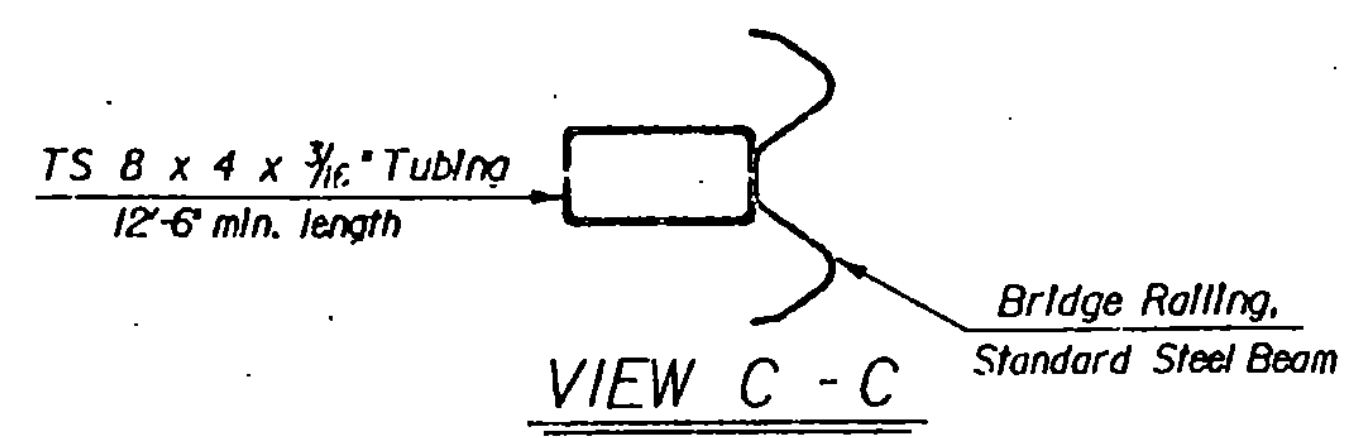
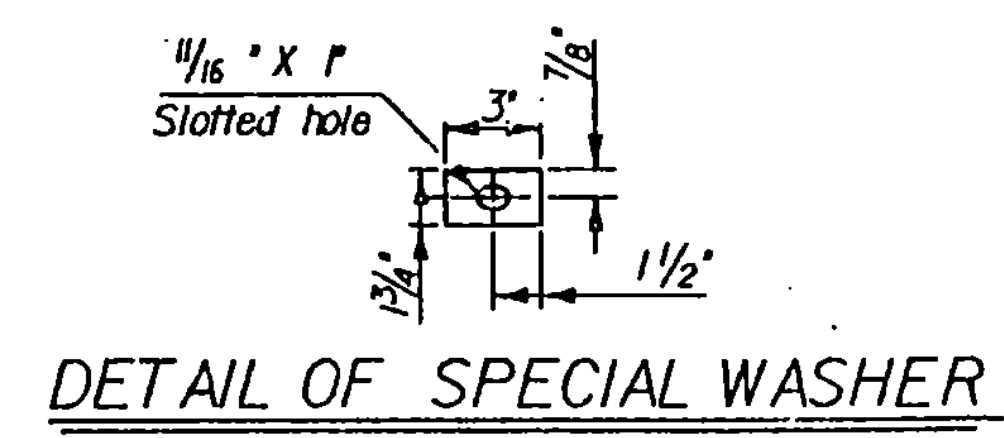
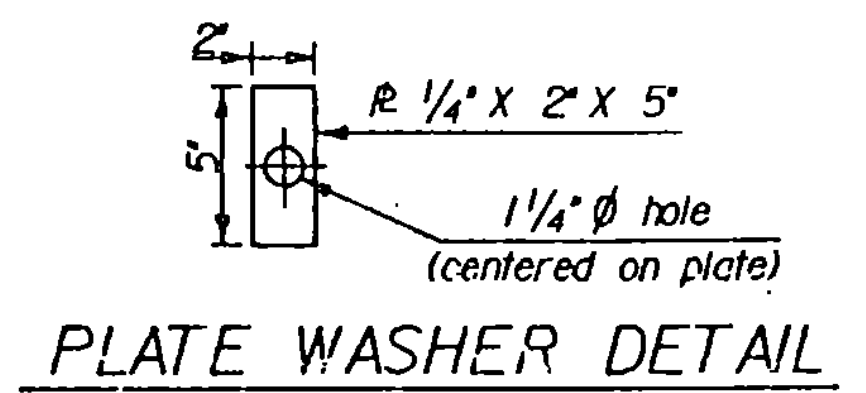


NOTES

- STANDARD STEEL BEAM GUARD RAIL SHALL CONFORM TO VT. SPECIFICATION 732.
- STRUCTURAL STEEL TUBING SHALL CONFORM TO VT. SPECIFICATION 732 GALVANIZED AFTER FABRICATION IN ACCORDANCE WITH ASTM A123 (AASHTO M11).
- ANCHOR BOLTS, NUTS AND WASHERS SHALL BE GALVANIZED IN ACCORDANCE WITH ASTM A53 (AASHTO M232) AND SHALL CONFORM TO VT. SPECIFICATION 714 UNLESS OTHERWISE NOTED.
- BRIDGE RAIL POSTS, PLATE WASHERS AND SPLICE BARS SHALL CONFORM TO VT. SPECIFICATION 728 GALVANIZED AFTER FABRICATION IN ACCORDANCE WITH ASTM A123 (AASHTO M11).
- ALL BOLTS AND RELATED HARDWARE SHALL CONFORM TO VT. SPECIFICATION 728 GALVANIZED AFTER FABRICATION.
- SEE STANDARD DRAWING G-1 AND G-1d FOR ADDITIONAL DETAILS CONCERNING GUARD RAIL.
- SEE STANDARD DRAWING SB-R6-82 FOR APPROACH RAIL DETAILS.
- ALL POSTS SHALL BE SET NORMAL TO GRADE.
- SPLICES FOR THE STEEL BEAM GUARD RAIL SHALL LAP IN THE DIRECTION OF TRAFFIC.
- SEE STANDARD DRAWING G-1 FOR DETAILS OF DELINEATORS. A DELINEATOR SHALL BE LOCATED AT EVERY FIFTH POST. PAYMENT SHALL BE SUBSIDIARY TO OTHER ITEMS.
- A RAILING JOINT SPLICE SHALL BE PROVIDED AT EACH SUPERSTRUCTURE EXPANSION JOINT.
- ALL FIELD CUT OR DRILLED AREAS SHALL BE COATED WITH ZINC RICH PAINT.
- FOR RADII LESS THAN 950 FEET, THE STEEL TUBING SHALL BE SHOP BENT TO FIT THE APPLICABLE CURVE.
- THE DROP-WEIGHT TEAR TEST IN SECTION 732 SHALL NOT APPLY TO THE STRUCTURAL TUBING ON THIS STANDARD.



REVISIONS AND CORRECTIONS
THE WIDTH OF THE W6 X 20 BRIDGE POST WAS
CHANGED FROM 7 1/4" TO 6 1/4" - 3/10/92.

APPROVED

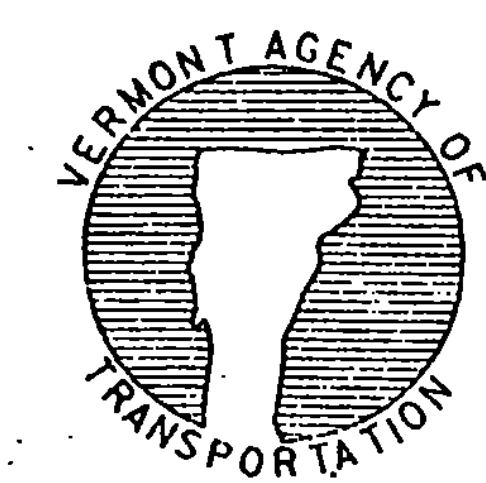
April 16, 1991
DATE

[Signature]
DIRECTOR OF CONSTRUCTION
AND MAINTENANCE

[Signature]
DIRECTOR OF PLANNING
AND PRECONSTRUCTION

[Signature]
STRUCTURES ENGINEER

**BRIDGE RAILING, STANDARD STEEL BEAM
/FASCIA MOUNTED/ STEEL TUBING**



**STANDARD
SB-R7-90**