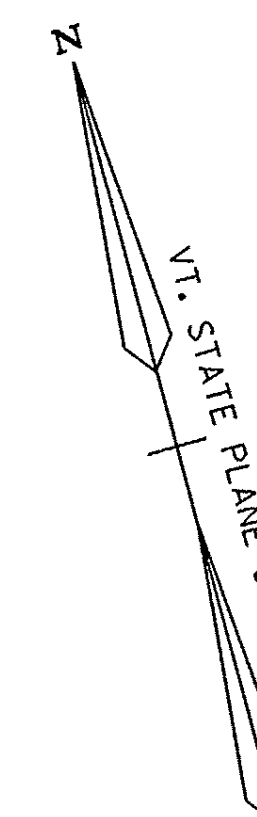


UTILITY SHEET



T.H. #5 CURVE DATA #4

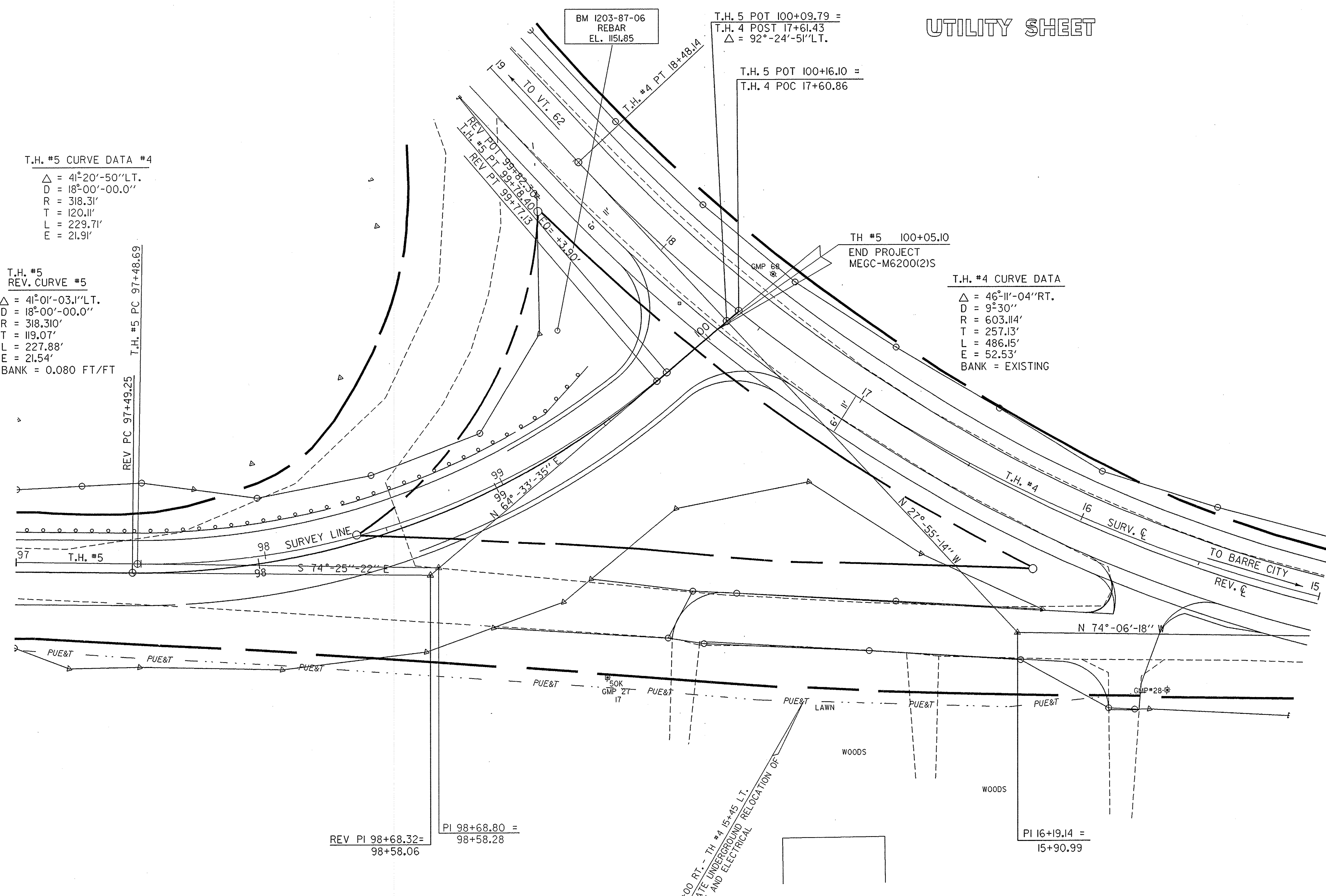
$\Delta = 41^{\circ}20'50''$ LT.
 $D = 18^{\circ}00'00.0''$
 $R = 318.31'$
 $T = 120.11'$
 $L = 229.71'$
 $E = 21.91'$

T.H. #5 REV. CURVE #5

$\Delta = 41^{\circ}01'03.1''$ LT.
 $D = 18^{\circ}00'00.0''$
 $R = 318.31'$
 $T = 119.07'$
 $L = 227.88'$
 $E = 21.54'$
 BANK = 0.080 FT/FT

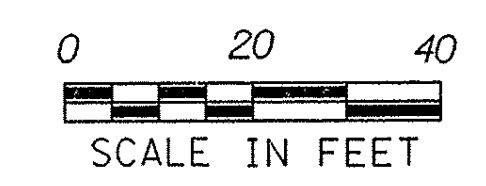
T.H. #4 CURVE DATA

$\Delta = 46^{\circ}11'04''$ RT.
 $D = 9^{\circ}30''$
 $R = 603.114'$
 $T = 257.13'$
 $L = 486.15'$
 $E = 52.53'$
 BANK = EXISTING



REV. 97+00 RT. - TH #4 15+45 LT.
 APPROXIMATE UNDERGROUND RELOCATION OF
 TELEPHONE AND ELECTRICAL

LEGEND
 PUE&T — PROPOSED UNDERGROUND ELECTRICAL AND TELEPHONE



DATUM
 VERTICAL NGVD 1929
 HORIZONTAL NAD 1927

SURVEYED BY C. REED DATE 9-87
 DRAWN BY D. WILLEY DATE 10-87
 SQUAD LEADER T. BOHL
 DESIGN FILE NO. /sqdd/87e055/de055bor.dgn
 IPARM FILE de055ut5.1 DATE PLOTTED 17-JUL-1997
 PROJ. NAME BERLIN
 PROJ. NO. MEGC-M6200(2)S
 SHEET 49 OF 73 SHEETS