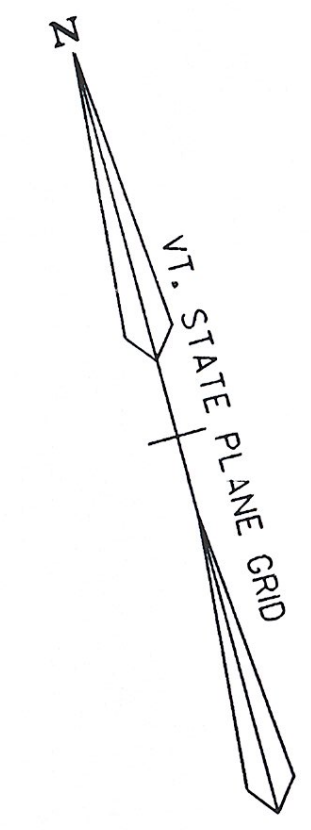
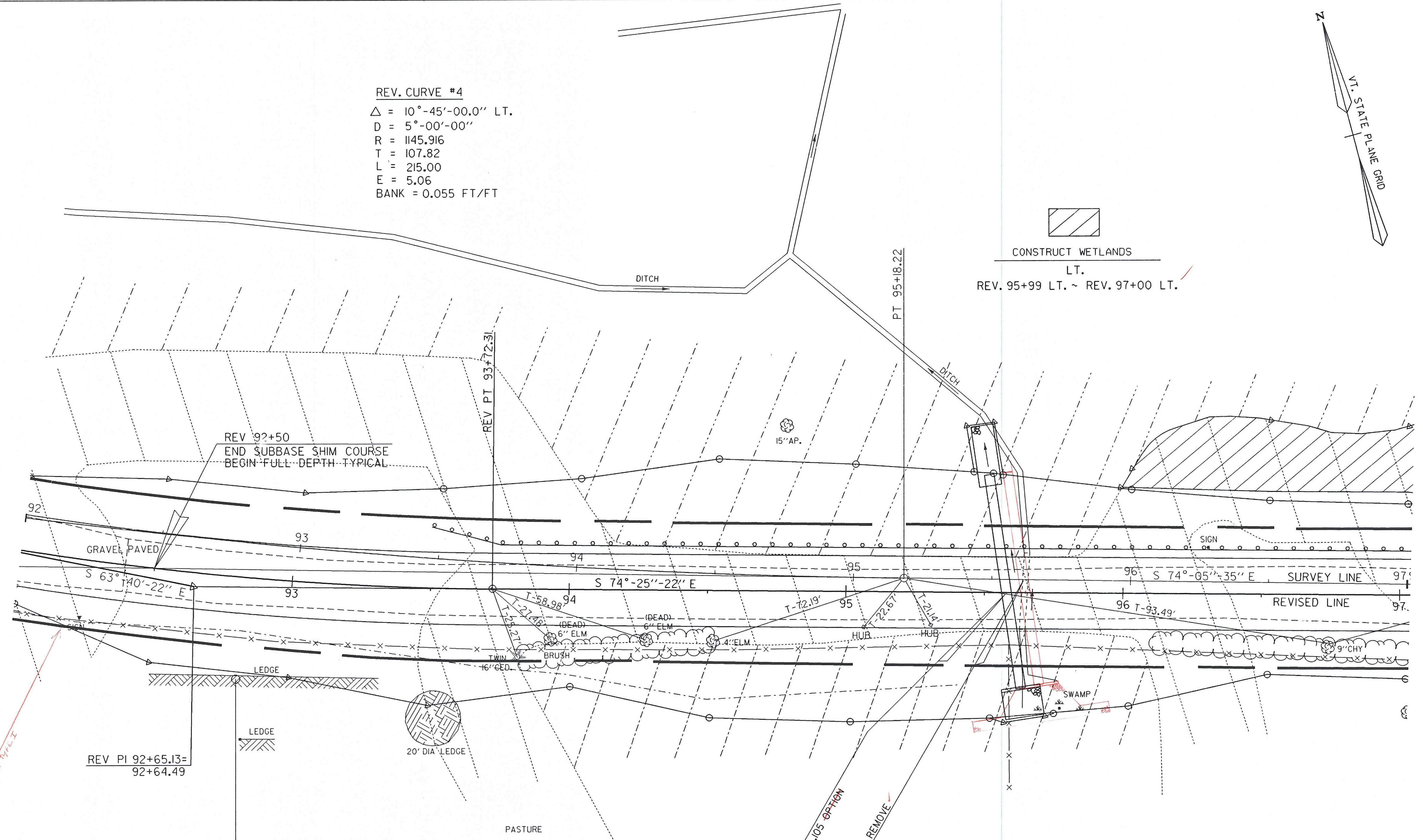


REV. CURVE #4
 $\Delta = 10^\circ-45'-00.0''$ LT.
 $D = 5^\circ-00'-00''$
 $R = 1145.916$
 $T = 107.82$
 $L = 215.00$
 $E = 5.06$
 BANK = 0.055 FT/FT



 CONSTRUCT WETLANDS
 LT.
 REV. 95+99 LT. ~ REV. 97+00 LT.



*22x0.15-94120 BT
 SW Ledge 1/12/97*

REV PI 92+65.13=
 92+64.49


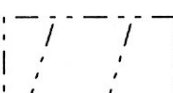
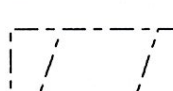
BM 1203-87-05
 BOLT IN LEDGE
 EL. 1169.18

REMOVAL OF EXISTING FENCE
 RT.
 REV 92+00 ~ REV 97+00 (NON PART.) (500 LF)
 REV 95+59 (20 LF)
 REV 95+59 (NON PART.) (8 LF)

*REV 95+59 & ASKEW 812.00' RT.
 NEW 92+00 X 78' PCOP 109 OR 124' RT.
 WITH 1/2" THICK 2" DIA. POSTS
 STEEL MANHOLE CO. INVERT 10.00'*

SURV 95+62 & EXISTING 18' COMP - REMOVE ✓

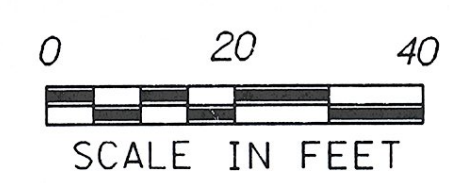
LEGEND

-  CLASS II BUFFER ZONE
-  CLASS II PFOI/4Y
-  CLASS II POWZ

SCARIFYING PAVEMENT
 REV 93+25 ~ REV 97+00

MELT
 LT.
 REV. 93+50 ~ REV. 93+87.5 ✓

STEEL BEAM GUARD RAIL
 LT.
 REV. 93+87.5 ~ REV. 97+00 ✓



DATUM
 VERTICAL NGVD 1929
 HORIZONTAL NAD 1927

SURVEYED BY	C. REED	DATE	9-87
DRAWN BY	D. WILLEY	DATE	10-87
SQUAD LEADER	T. BOHL		
DESIGN FILE NO.	/sadd/87e055/de055bor.dgn		
IPARM FILE	DE05514R	DATE PLOTTED	17-JUL-1997
PROJ. NAME	BERLIN		
PROJ. NO.	MEGC-M6200(2)S		
SHEET	26	OF	73 SHEETS