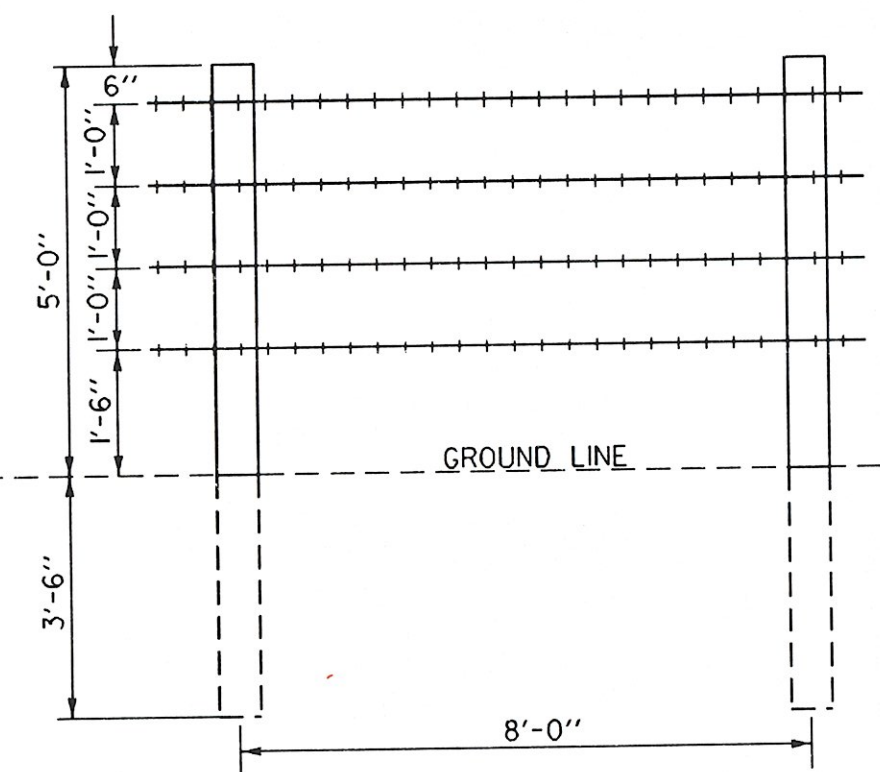


BARB WIRE FENCE DETAILS (SEE SPECIAL PROVISIONS)



- NOTES:
1. ALL POSTS SHALL BE SEASONED CEDAR, STRAIGHT, SOUND, AND NOT LESS THAN 4 1/2" DIA. AT THE SMALL END NOR GREATER THAN 5 1/2" DIA. AT THE GROUND LINE.
 2. BARB WIRE SHALL CONFORM TO REQUIREMENTS FOR ZINC COATED (GALVANIZED) STEEL BARB WIRE, ASTM A 121, 2 STRAND STANDARD SIZE NO. 12 1/2, COATING CLASS NO. 3.
 3. STAPLES SHALL BE AT LEAST 1 1/4" LONG OF NO. 9 GALVANIZED WIRE.

REMOVAL OF EXISTING FENCE

LT.	RT.
75+00 ~ 77+37 (NON PART.) (238 LF)	76+67 ~ 76+92 (25 LF) 77+09 ~ 77+27 (24 LF) 77+32 ~ 77+33 (4 LF)
BARB WIRE FENCE - FOUR STRAND	
LT.	RT.
75+00 ~ 77+37 (238 LF) 77+38 ~ 77+38 (2 LF)	76+67 ~ 76+98 (31 LF) 77+15 ~ 77+32 (17 LF)

RELOCATE MAILBOX, SINGLE SUPPORT

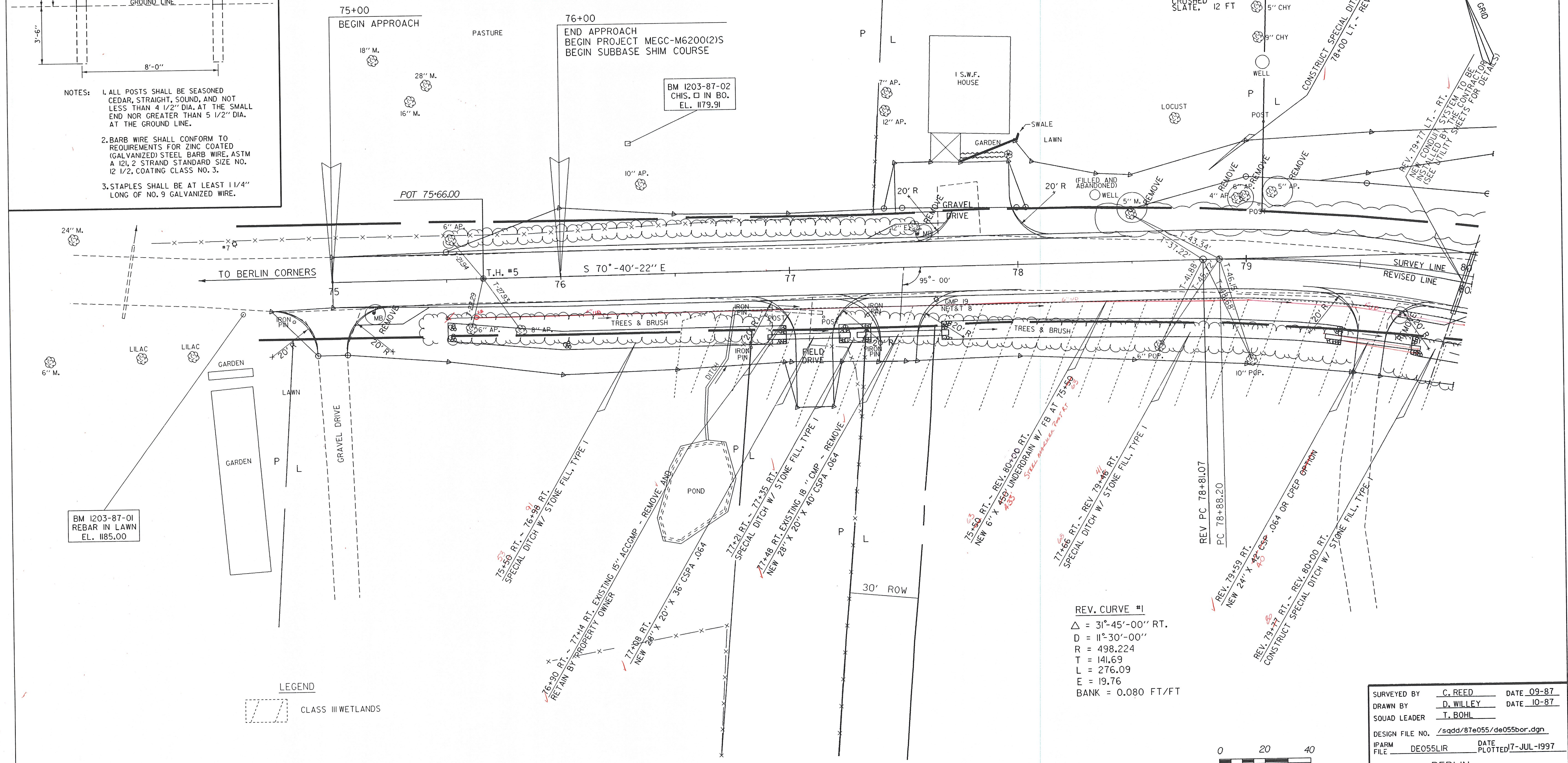
LT.	RT.
77+62 78+0	75+18.21 79+78.01

CONSTRUCT MAILBOX TURNOUT

LT.	RT.
77+62	75+18 REV. 79+78

CONSTRUCT DRIVE

LT.	RT.
77+85 78+15	74+98
CRUSHED SLATE, 24 FT	GRAVEL, 13 FT
	77+10
	GRAVEL, 16 FT
	77+50
	GRAVEL, 16 FT
	REV. 79+59
	CRUSHED SLATE, 12 FT



BM 1203-87-01
REBAR IN LAWN
EL. 1185.00

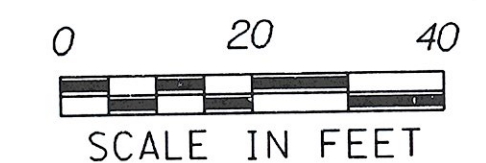
BM 1203-87-02
CHIS. IN BO.
EL. 1179.91

LEGEND



DATUM
VERTICAL NGVD 1929
HORIZONTAL NAD 1927

REV. CURVE #1
Δ = 31°-45'-00" RT.
D = 11°-30'-00"
R = 498.224
T = 141.69
L = 276.09
E = 19.76
BANK = 0.080 FT/FT



SURVEYED BY	C. REED	DATE	09-87
DRAWN BY	D. WILLEY	DATE	10-87
QUAD LEADER	T. BOHL		
DESIGN FILE NO.	/sqdd/87e055/de055bor.dgn		
IPARM FILE	DE055LIR	DATE PLOTTED	7-JUL-1997
PROJ. NAME	BERLIN		
PROJ. NO.	MEGC-M6200(2)S		
SHEET	23	OF	73 SHEETS

BEGIN