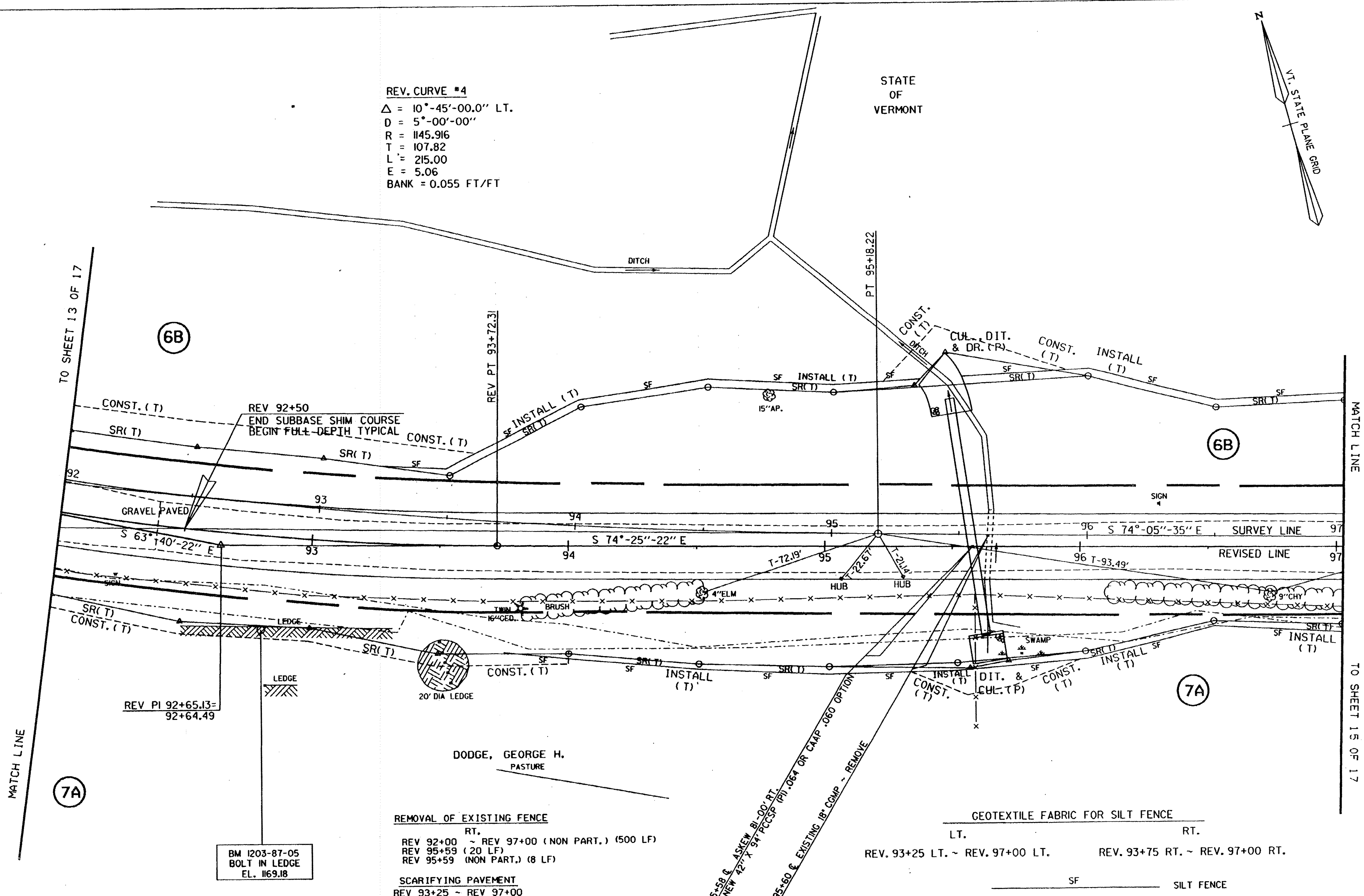
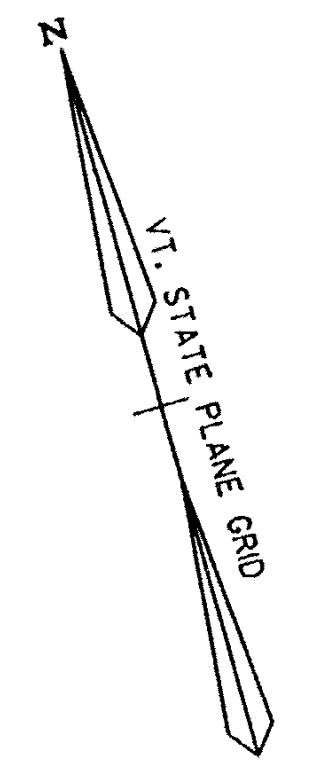


REV. CURVE #4
 $\Delta = 10^{\circ}-45'-00.0''$ LT.
 $D = 5^{\circ}-00'-00''$
 $R = 1145.916$
 $T = 107.82$
 $L = 215.00$
 $E = 5.06$
 $BANK = 0.055$ FT/FT

STATE OF VERMONT



TO SHEET 13 OF 17

MATCH LINE

MATCH LINE

TO SHEET 15 OF 17

7A

7A

6B

6B

REV PI 92+65.13-
92+64.49

BM 1203-87-05
BOLT IN LEDGE
EL. 1169.18

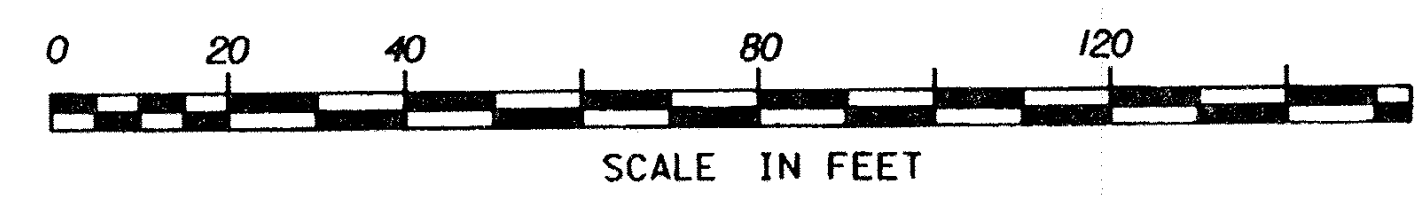
DODGE, GEORGE H.
PASTURE

REMOVAL OF EXISTING FENCE
 RT.
 REV 92+00 ~ REV 97+00 (NON PART.) (500 LF)
 REV 95+59 (20 LF)
 REV 95+59 (NON PART.) (8 LF)

SCARIFYING PAVEMENT
 REV 93+25 ~ REV 97+00

GEOTEXTILE FABRIC FOR SILT FENCE
 LT. RT.
 REV. 93+25 LT. ~ REV. 97+00 LT. REV. 93+75 RT. ~ REV. 97+00 RT.

REV 95+59 & ASKED B-00-RT
 NEW 92+74 TCCSP (PI) 1064 OR CAMP 1060 OPTION
 SURV 95+60 & EXISTING 18' COMP - REMOVE



DATUM
 VERTICAL _____
 HORIZONTAL _____

03-3387 87E055 1805 FJM
 SURVEYED BY REED DATE 09-87
 DRAWN BY WILLEY DATE 10-87
 SQUAD LEADER PERKINS
 DESIGN FILE NO. /usr/zfd/070070.dlr/87e055zz.dgn
 PARM FILE 87e05514r.i DATE PLOTTED 17-MAY-1993

BERLIN
 MEGC M 6200(2) S
 R. O. W. SHEET 14 OF 17
 SHEET 14 OF 73