

GEOTEXTILE FABRIC FOR SILT FENCE
78+00 LT. ~ REV. 80+00 LT.

SF SILT FENCE

REMOVAL OF EXISTING FENCE

LT. RT.
75+00 ~ 77+37 (NON PART.) 76+67 ~ 76+92 (25 LF)
(238 LF) 77+09 ~ 77+27 (24 LF)
77+32 ~ 77+33 (4 LF)

BARB WIRE FENCE - FOUR STRAND

LT. RT.
75+00 ~ 77+37 (238 LF) 76+67 ~ 76+98 (31LF)
77+15 ~ 77+32 (35 LF)

RELOCATE MAILBOX, SINGLE SUPPORT

LT. RT.
77+53 75+18
79+70

CONSTRUCT MAILBOX TURNOUT

LT. RT.
77+62 75+18
REV. 79+78

CONSTRUCT DRIVE

LT. RT.
77+85 74+98
CRUSHED GRAVEL, 13 FT
SLATE, 24 FT 77+10
GRAVEL, 16 FT
77+50
GRAVEL, 16 FT
REV. 79+59
CRUSHED SLATE, 12 FT

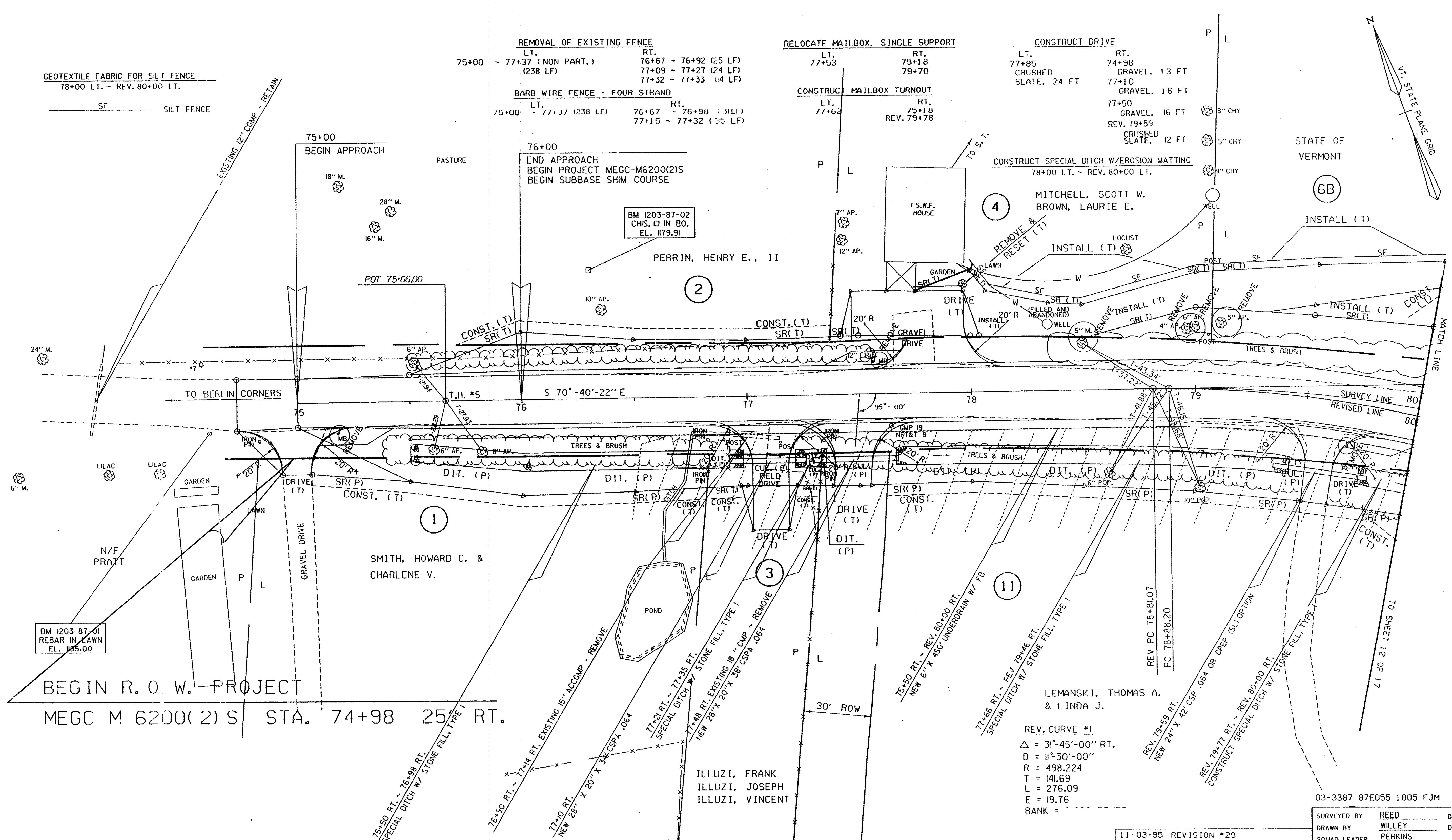
CONSTRUCT SPECIAL DITCH W/EROSION MATTING
78+00 LT. ~ REV. 80+00 LT.

MITCHELL, SCOTT W.
BROWN, LAURIE E.

STATE OF VERMONT

(6B)

INSTALL (T)



BEGIN R.O.W. PROJECT
MEGC M 6200(2) S STA. 74+98 25' RT.

BM 1203-87-01
REBAR IN LAWN
EL. 105.00

BM 1203-87-02
CHIS. □ IN BO.
EL. 1179.91

SMITH, HOWARD C. &
CHARLENE V.

PERRIN, HENRY E., II

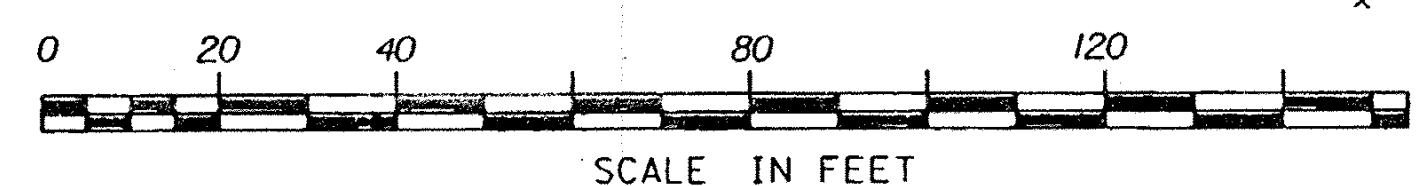
LEMANSKI, THOMAS A.
& LINDA J.

ILLUZI, FRANK
ILLUZI, JOSEPH
ILLUZI, VINCENT

REV. CURVE #1
Δ = 31°-45'-00" RT.
D = 11°-30'-00"
R = 498.224
T = 141.69
L = 276.09
E = 19.76
BANK =

03-3387 87E055 1805 FJM

LEGEND
CLASS III WETLANDS



DATUM
VERTICAL _____
HORIZONTAL _____

11-03-95	REVISION #29
07-19-93	REVISION #25
05-25-93	REVISION #23
05-13-93	REVISION #21
05-03-93	REVISION #19
04-30-93	REVISION #18
04-26-93	REVISION #15
07-20-92	REVISION #13

SURVEYED BY REED DATE 09-87
DRAWN BY WILLEY DATE 10-87
SQUAD LEADER PERKINS
DESIGN FILE NO. /prop/87e055/rro055zzz.dgn
IPARM FILE 87e055llr DATE PLOTTED 7-NOV-1995
BERLIN
MEGC M 6200(2) S
R.O.W. SHEET 11 OF 17
SHEET 16 OF 73