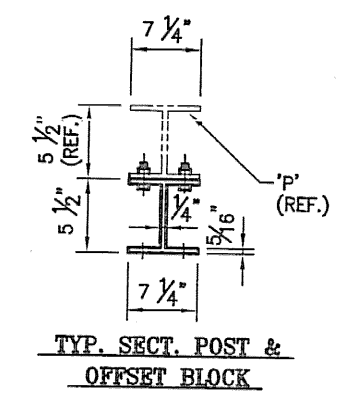


OFFSET BLOCK CHART FOR BRIDGE 41 SE & NW APPROACHES  
POSTS P5L - P7L, P12L - P15L

POST No.	OFFSET BLOCK	QTY.	A	B	C	D	E	F (O.C.)	X	REV
P5L	OB5L	1	1'-7 5/8"	1'-4 11/16"	2 3/16"	3/8"	1 13/16"	1'-7 7/16"	3/8"	
P6L	OB6L	1	1'-8 7/16"	1'-3 3/4"	2 3/16"	3/8"	1 13/16"	1'-6 7/16"	3/8"	
P7L	OB7L	1	1'-5 11/16"	1'-2 13/16"	2 3/16"	7/16"	1 3/4"	1'-5 1/2"	3/4"	
P7L	OB8L	1	1'-5 3/4"	1'-2 13/16"	2 3/16"	7/16"	1 3/4"	1'-5 1/2"	3/4"	
P12L	OB12L	1	1'-5 11/16"	1'-2 7/8"	2 3/16"	5/16"	1 7/8"	1'-5 11/16"	3/2"	
P14L	OB14L	1	1'-5 3/4"	1'-2 3/4"	2 3/16"	5/16"	1 7/8"	1'-5 5/8"	3/2"	
P15L	OB15L	5	1'-5 3/4"	1'-2 3/4"	2 1/4"	7/16"	1 3/4"	1'-5 1/2"	3/4"	

POST No.	OFFSET BLOCK	G	H	J	K
P5L	OB5L	1 3/16"	1'-3 3/4"	1 1/8"	1'-3 9/16"
P6L	OB6L	1 3/16"	1'-2 13/16"	1 1/16"	1'-2 5/8"
P7L	OB7L	1 3/16"	1'-1 7/8"	1 1/16"	1'-1 9/16"
P7L	OB8L	1 1/4"	1'-1 3/4"	1 1/16"	1'-1 5/8"
P12L	OB12L	1 3/16"	1'-1 7/8"	1 1/8"	1'-1 13/16"
P14L	OB14L	1 3/16"	1'-1 13/16"	1 1/8"	1'-1 11/16"
P15L	OB15L	1 1/4"	1'-1 3/4"	1 1/16"	1'-1 5/8"



OFFSET BLOCK CHART FOR BRIDGE 41 SE & NE APPROACHES  
POSTS P6R - P7R, P12R - P14R

POST No.	OFFSET BLOCK	QTY.	A	B	C	D	E	F (O.C.)	X	REV
P6R	OB6R	1	1'-7 9/16"	1'-4 3/8"	2 1/4"	1/2"	1 3/4"	1'-7 5/16"	3/4"	
P6R	OB6R	1	1'-6 11/16"	1'-3 7/16"	2 1/4"	1/2"	1 3/4"	1'-6 7/16"	3/4"	
P7R	OB7R	6	1'-5 11/16"	1'-2 11/16"	2 3/16"	5/16"	1 7/8"	1'-5 1/2"	3/4"	
P12R	OB12R	1	1'-5 15/16"	1'-2 7/8"	2 1/4"	1/2"	1 3/4"	1'-5 11/16"	3/4"	
P13R	OB13R	1	1'-5 7/8"	1'-2 13/16"	2 1/4"	1/2"	1 3/4"	1'-5 5/8"	3/4"	
P14R	OB14R	4	1'-5 5/8"	1'-2 5/8"	2 1/8"	5/16"	1 7/8"	1'-5 1/2"	3/4"	

POST No.	OFFSET BLOCK	G	H	J	K
P6R	OB6R	1 1/4"	1'-3 7/16"	1 1/16"	1'-3 3/16"
P6R	OB6R	1 1/4"	1'-2 7/16"	1 1/16"	1'-2 1/4"
P7R	OB7R	1 3/16"	1'-1 3/4"	1 1/8"	1'-1 5/8"
P12R	OB12R	1 1/4"	1'-1 7/8"	1 1/16"	1'-1 3/4"
P13R	OB13R	1 1/4"	1'-1 13/16"	1 1/16"	1'-1 3/8"
P14R	OB14R	1 3/16"	1'-1 11/16"	1 1/8"	1'-1 3/8"

NOTE:  
4 CLAMPING BARS CB-03-A  
(#18447) PER POSTS P5 - P7, P12 - P14,  
P15 w/ 1/2" - 13 UNC.  
S.S. BOLT x 1" LG. TPB1,  
1 1/16" O.D. x 17/32"  
I.D. x 3/32" THK. ALUM  
WASHER TPW1  
(#15280 & #19404)  
(6 PER POST)

RECEIVED  
 CK'D BY *CM* OK'D BY *CWC*  
 JUL 09 2008  
 RESUBMIT APPROVED  
 BY \_\_\_\_\_ DATE \_\_\_\_\_

PROJECT No. BRZ 1441(19) C/2 ITEM No. 900.640  
 APPROVED: \_\_\_\_\_  
 L.B. FOSTER COMPANY  
 1010 GREENTREE ROAD  
 PITTSBURGH, PENNSYLVANIA 15220  
 FOR: A. D. ROSSI CORPORATION  
 VERMONT AGENCY OF TRANSPORTATION  
 TOWN OF POWNALL, COUNTY OF BENNINGTON  
 BRIDGE RAILING FOR BRIDGE #41, TH 24, CL3 (LOCAL)  
 OFFSET BLOCK DETAILS  
 MADE C.M.S. DATE 06/12/08 JOB No. ARD495 CUST. No.  
 CHECK. B.L. DATE 05/19/08 DRAWING LB14 REV. No.