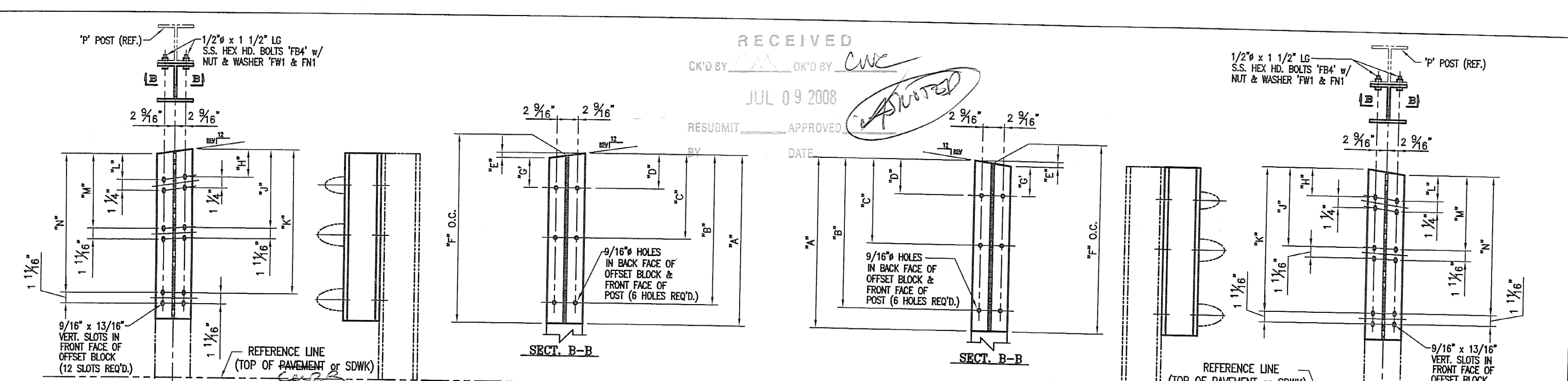


RECEIVED
 JUL 09 2008
 APPROVED
 DATE

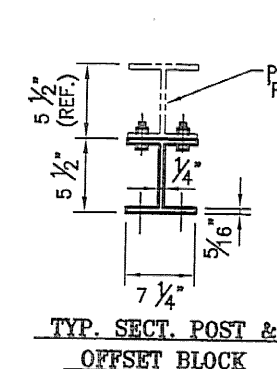


OFFSET BLOCK CHART FOR BRIDGE 41 NW & SE APPROACHES
 POSTS P1L - P4L, P6L - P11L

POST NO.	OFFSET BLOCK	QTY.	A	B	C	D	E	F (O.C.)	G	X
P1L	OB1L	1	2'-9 7/8"	2'-6 15/16"	1'-1 3/8"	1 7/8"	11/16"	2'-9 1/2"	1 3/16"	1 3/16"
P2L	OB2L	1	2'-7 1/2"	2'-4 1/2"	11 11/16"	1 7/8"	11/16"	2'-7 1/8"	1 3/16"	1 3/16"
P3L	OB3L	1	2'-5 1/8"	2'-2 1/8"	10"	1 7/8"	11/16"	2'-4 3/4"	1 3/16"	1 3/16"
P4L	OB4L	1	2'-2 3/4"	1'-11 3/4"	8 5/16"	1 7/8"	11/16"	2'-2 3/8"	1 3/16"	1 3/16"
P6L	OB6L	1	2'-5 1/4"	2'-2 5/16"	1'-1 5/16"	1 7/8"	5/8"	2'-4 15/16"	1 1/4"	1 1/16"
P10L	OB10L	1	2'-3 1/2"	2'-0 9/16"	11 11/16"	1 7/8"	5/8"	2'-3 3/16"	1 1/4"	1 1/16"
P11L	OB11L	1	2'-1 13/16"	1'-10 7/8"	10 1/16"	1 7/8"	5/8"	2'-1 1/2"	1 1/4"	1 1/16"
P12L	OB12L	1	2'-0 1/16"	1'-9 1/8"	8 3/8"	1 7/8"	5/8"	1'-11 3/4"	1 1/4"	1 1/16"

OFFSET BLOCK ~ RAIL MTG. DIMENSIONS

POST NO.	OFFSET BLOCK	H	J	K	L	M	N
P1L	OB1L	1 1/16"	1'-0 3/8"	2'-6"	13/16"	11 15/16"	2'-5 7/16"
P2L	OB2L	1 1/16"	10 11/16"	2'-3 5/8"	13/16"	10 1/4"	2'-3 1/16"
P3L	OB3L	1 1/16"	9"	2'-1 3/16"	13/16"	8 9/16"	2'-0 1/16"
P4L	OB4L	1 1/16"	7 5/16"	1'-10 13/16"	13/16"	6 7/8"	1'-10 1/4"
P6L	OB6L	1 1/16"	1'-0 3/8"	2'-1 3/8"	7/8"	1'-0"	2'-0 15/16"
P10L	OB10L	1 1/16"	10 3/4"	1'-11 5/8"	7/8"	10 5/16"	1'-11 1/4"
P11L	OB11L	1 1/16"	9 1/16"	1'-9 15/16"	7/8"	8 11/16"	1'-9 1/2"
P12L	OB12L	1 1/16"	7 7/16"	1'-8 3/16"	7/8"	7"	1'-7 13/16"



OFFSET BLOCK CHART FOR BRIDGE 41 SW & NE APPROACHES
 POSTS P1R - P4R, P6R - P11R

POST NO.	OFFSET BLOCK	QTY.	A	B	C	D	E	F (O.C.)	G	X
P1R	OB1R	1	2'-9 1/8"	2'-6 1/16"	1'-0 13/16"	1 15/16"	3/4"	2'-8 3/4"	1 3/16"	1 1/4"
P2R	OB2R	1	2'-6 15/16"	2'-3 7/8"	11 3/8"	1 15/16"	3/4"	2'-6 9/16"	1 3/16"	1 1/4"
P3R	OB3R	1	2'-4 3/4"	2'-1 3/4"	9 15/16"	1 15/16"	3/4"	2'-4 3/8"	1 3/16"	1 1/4"
P4R	OB4R	1	2'-2 5/8"	1'-11 5/8"	8 1/2"	1 15/16"	3/4"	2'-2 1/4"	1 3/16"	1 1/4"
P6R	OB6R	1	2'-5 5/16"	2'-2 7/16"	1'-1 1/2"	1 15/16"	3/4"	2'-4 15/16"	1 3/16"	1 1/4"
P9R	OB9R	1	2'-3 9/16"	2'-0 13/16"	11 15/16"	1 15/16"	3/4"	2'-3 3/16"	1 3/16"	1 1/4"
P10R	OB10R	1	2'-1 7/8"	1'-11 3/16"	10 5/16"	1 15/16"	3/4"	2'-1 1/2"	1 3/16"	1 1/4"
P11R	OB11R	1	2'-0 1/8"	1'-9 1/2"	8 3/4"	1 15/16"	3/4"	1'-11 3/4"	1 3/16"	1 1/4"

OFFSET BLOCK ~ RAIL MTG. DIMENSIONS

POST NO.	OFFSET BLOCK	H	J	K	L	M	N
P1R	OB1R	1 1/16"	11 13/16"	2'-5 1/16"	13/16"	11 7/16"	2'-4 9/16"
P2R	OB2R	1 1/16"	10 3/8"	2'-2 15/16"	13/16"	10"	2'-2 7/16"
P3R	OB3R	1 1/16"	8 15/16"	2'-0 13/16"	13/16"	8 1/2"	2'-0 1/4"
P4R	OB4R	1 1/16"	7 1/2"	1'-10 5/8"	13/16"	7 1/16"	1'-10 1/8"
P6R	OB6R	1 1/16"	1'-0 1/2"	2'-1 7/16"	13/16"	1'-0"	2'-1"
P9R	OB9R	1 1/16"	10 7/8"	1'-11 13/16"	13/16"	10 7/16"	1'-11 3/8"
P10R	OB10R	1 1/16"	9 5/16"	1'-10 1/8"	13/16"	8 7/8"	1'-9 11/16"
P11R	OB11R	1 1/16"	7 3/4"	1'-8 1/2"	13/16"	7 5/16"	1'-8 1/16"

NOTE:
 2 CLAMPING BARS CB-01-H (#2558) PER POSTS P1 - P4, P6 - P11
 4 CLAMPING BARS CB-03-A (#1947) PER POSTS P1 - P4, P6 - P11
 W/ 1/2" - 13 UNC S.S. BOLT x 1" LG. 'FB1', 1 1/16" O.D. x 17/32" THK. ALUM WASHER 'FW1' (#15280 & #19404) (16 PER POST)

NOTE:
 4 CLAMPING BARS CB-03-A (#1947) PER POSTS P1 - P4, P6 - P11
 W/ 1/2" - 13 UNC S.S. BOLT x 1" LG. 'FB1', 1 1/16" O.D. x 17/32" THK. ALUM WASHER 'FW1' (#15280 & #19404) (8 PER POST)

PROJECT No. BRZ 1441(19) C/2 ITEM No: 900.640

APPROVED: _____ RECD APPROVAL _____
 DRAWING _____

L.B. FOSTER COMPANY
 1615 GREENBRIER ROAD
 PITTSBURGH, PENNSYLVANIA 15220

FOR: A. D. ROSSI CORPORATION
 VERMONT AGENCY OF TRANSPORTATION
 TOWN OF POWNALL, COUNTY OF BENNINGTON
 BRIDGE RAILING FOR BRIDGE #41, TH 24, CL3 (LOCAL)
 OFFSET BLOCK DETAILS

MADE C.M.S. DATE 06/11/08 JOB No. ARD495 CUST. No. _____
 CHECKED DATE 06/19/08 DRAWING LB13 REV. No. _____

ANODIZED
 (SEE NOTES ON LB1)