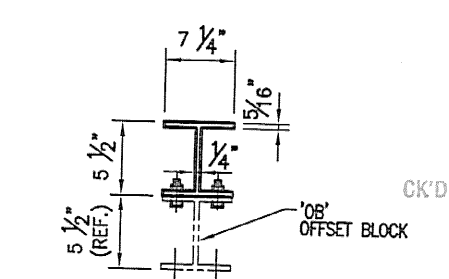


APPROACH POST DETAIL CHART FOR BRIDGE 41

OFFSET BLOCK MTG. DIMENSIONS								
POST No.	QTY.	A	B	C	D	E	F (O.C.)	BEV
P1L	1	1 7/8"	1'-1 3/8"	2'-8 15/16"	11/16"	1 3/16"	3'-4 7/8"	1 3/16"
P2L	1	1 7/8"	11 11/16"	2'-4 1/2"	11/16"	1 3/16"	3'-2 3/4"	1 3/16"
P3L	1	1 7/8"	10"	2'-2 1/8"	11/16"	1 3/16"	3'-0 11/16"	1 3/16"
P4L	1	1 7/8"	8 5/16"	1'-11 3/4"	11/16"	1 3/16"	2'-10 9/16"	1 3/16"
P5L	1	2 3/16"	1'-4 11/16"	3/8"	1 13/16"	2'-4 1/16"	5/8"	5/8"
P6L	1	2 3/16"	1'-3 3/4"	3/8"	1 13/16"	2'-3 9/16"	5/8"	5/8"
P7L	1	2 3/16"	1'-2 13/16"	7/16"	1 3/4"	2'-3"	3/4"	3/4"
P8L	1	2 3/16"	1'-2 13/16"	7/16"	1 3/4"	2'-3"	3/4"	3/4"
P9L	1	1 7/8"	1'-1 5/16"	2'-2 5/16"	5/8"	1 1/4"	3'-4 1/2"	1 1/16"
P10L	1	1 7/8"	11 11/16"	2'-0 9/16"	5/8"	1 1/4"	3'-2 9/16"	1 1/16"
P11L	1	1 7/8"	10 1/16"	1'-10 7/8"	5/8"	1 1/4"	3'-0 9/16"	1 1/16"
P12L	1	1 7/8"	8 3/8"	1'-9 1/8"	5/8"	1 1/4"	2'-10 9/16"	1 1/16"
P13L	1	2 3/16"	1'-2 7/8"	5/16"	1 7/8"	2'-4 1/16"	1/2"	1/2"
P14L	1	2 3/16"	1'-2 3/4"	5/16"	1 7/8"	2'-3 5/8"	1/2"	1/2"
P15L	5	2 1/4"	1'-2 3/4"	7/16"	1 3/4"	2'-3"	3/4"	3/4"

NOTE:
 2 CLAMPING BARS CB-01-H (#26596) PER POSTS P1-P4
 4 CLAMPING BARS CB-03-A (#19447) PER POSTS P1-P4
 W/ 1/2" x 13 UNC S.S. BOLT x 1" LG. 'FB1', 1 1/16" O.D. x 17/32" THK. ALUM WASHER 'FW1' (#15280 & # 19404) (16 PER POST)

NOTE:
 4 CLAMPING BARS CB-03-A (#19447) PER POSTS P5-P7
 W/ 1/2" x 13 UNC S.S. BOLT x 1" LG. 'FB1', 1 1/16" O.D. x 17/32" THK. ALUM WASHER 'FW1' (#15280 & # 19404) (8 PER POST)



APPROACH POST DETAIL CHART FOR BRIDGE 41

OFFSET BLOCK MTG. DIMENSIONS								
POST No.	QTY.	A	B	C	D	E	F (O.C.)	BEV
P1R	1	1 15/16"	1'-0 13/16"	2'-8 1/16"	3/4"	1 3/16"	4'-0 5/8"	1 1/4"
P2R	1	1 15/16"	11 3/8"	2'-3 7/8"	3/4"	1 3/16"	3'-9 9/16"	1 1/4"
P3R	1	1 15/16"	9 15/16"	2'-1 3/4"	3/4"	1 3/16"	3'-8 1/2"	1 1/4"
P4R	1	1 15/16"	8 1/2"	1'-11 5/8"	3/4"	1 3/16"	3'-3 7/16"	1 1/4"
P5R	1	2 1/4"	1'-4 3/8"	1/2"	1 3/4"	2'-7 1/8"	3/4"	3/4"
P6R	1	2 1/4"	1'-3 7/16"	1/2"	1 3/4"	2'-4 15/16"	3/4"	3/4"
P7R	6	2 3/16"	1'-2 11/16"	5/16"	1 7/8"	2'-3"	3/4"	3/4"
P8R	1	1 15/16"	1'-1 1/2"	2'-2 7/16"	3/4"	1 3/16"	3'-4 5/8"	1 1/4"
P9R	1	1 15/16"	11 15/16"	2'-0 13/16"	3/4"	1 3/16"	3'-2 5/8"	1 1/4"
P10R	1	1 15/16"	10 5/16"	1'-11 3/16"	3/4"	1 3/16"	3'-0 9/16"	1 1/4"
P11R	1	1 15/16"	8 3/4"	1'-9 1/2"	3/4"	1 3/16"	2'-10 9/16"	1 1/4"
P12R	1	2 1/4"	1'-2 7/8"	1/2"	1 3/4"	2'-3 5/8"	3/4"	3/4"
P13R	1	2 1/4"	1'-2 13/16"	1/2"	1 3/4"	2'-3"	3/4"	3/4"
P14R	4	2 1/8"	1'-2 5/8"	5/16"	1 7/8"	2'-3"	3/4"	3/4"

RECEIVED ANODIZED

CK'D BY: *CAC* ON'D BY: *CAC* (SEE NOTES ON LB)

JUL 09 2008

PROJECT No. BRZ 1441(19) C/2

FOR: A. D. ROSSI CORPORATION
 VERMONT AGENCY OF TRANSPORTATION
 TOWN OF POWNAL, COUNTY OF BENNINGTON
 BRIDGE RAILING FOR BRIDGE #41, TRL 24, CL3 (LOCAL)
 3L ALUMINUM APPROACH RAIL POST DETAILS

MADE C.M.S. DATE 06/11/08, JOB NO. AFD4455, QUOT. No. 1014 GORRISTON ROAD PITTSBURGH, PENNSYLVANIA 15220

CHECK BILL DATE 06/19/08, DRAWING LB12

ITEM No. 900.640

APPROVED: _____

REC'D APPROVAL _____

DRAWING _____

L.B. FOSTER COMPANY