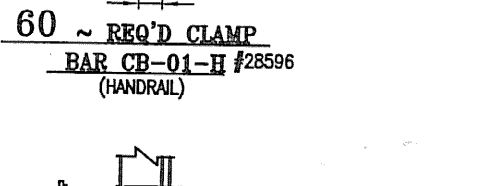
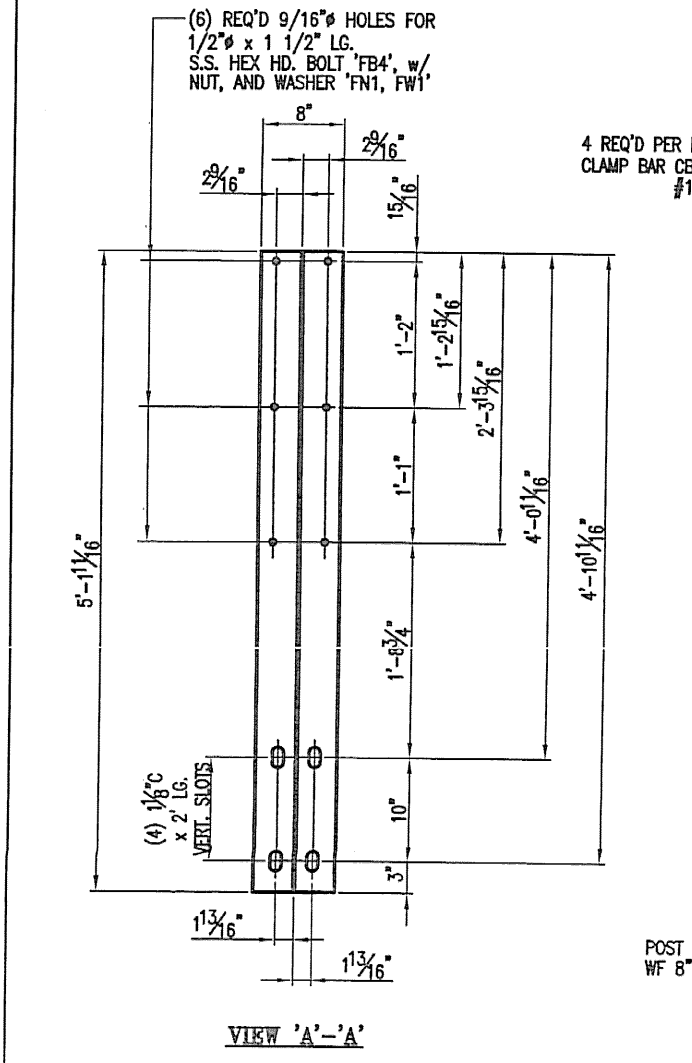


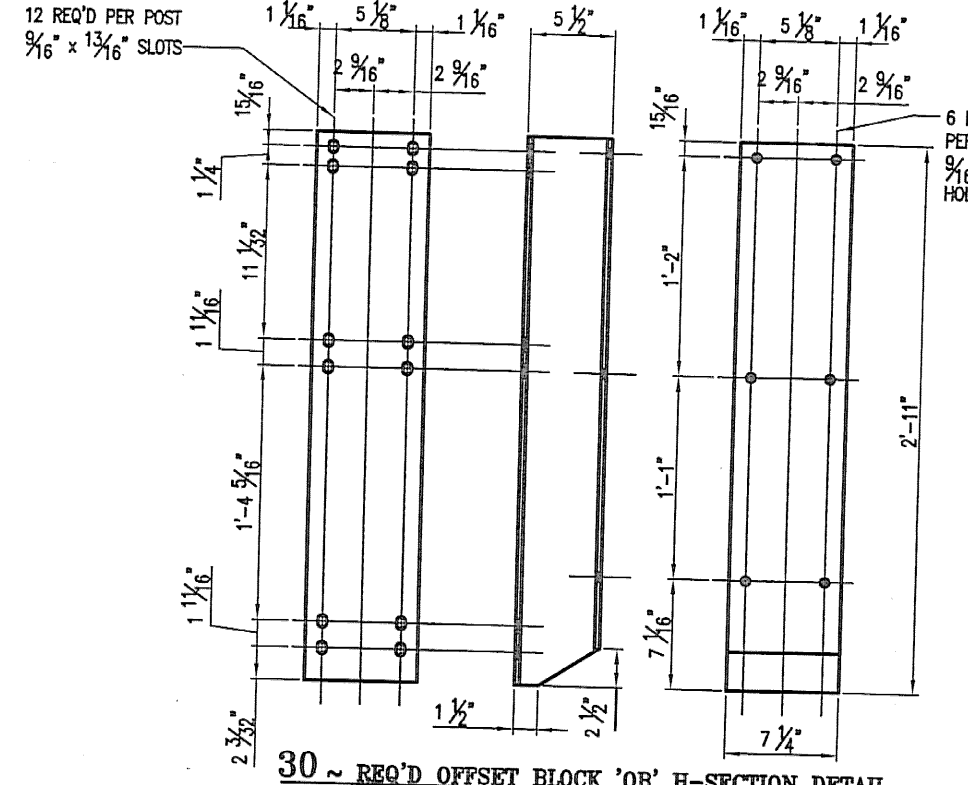
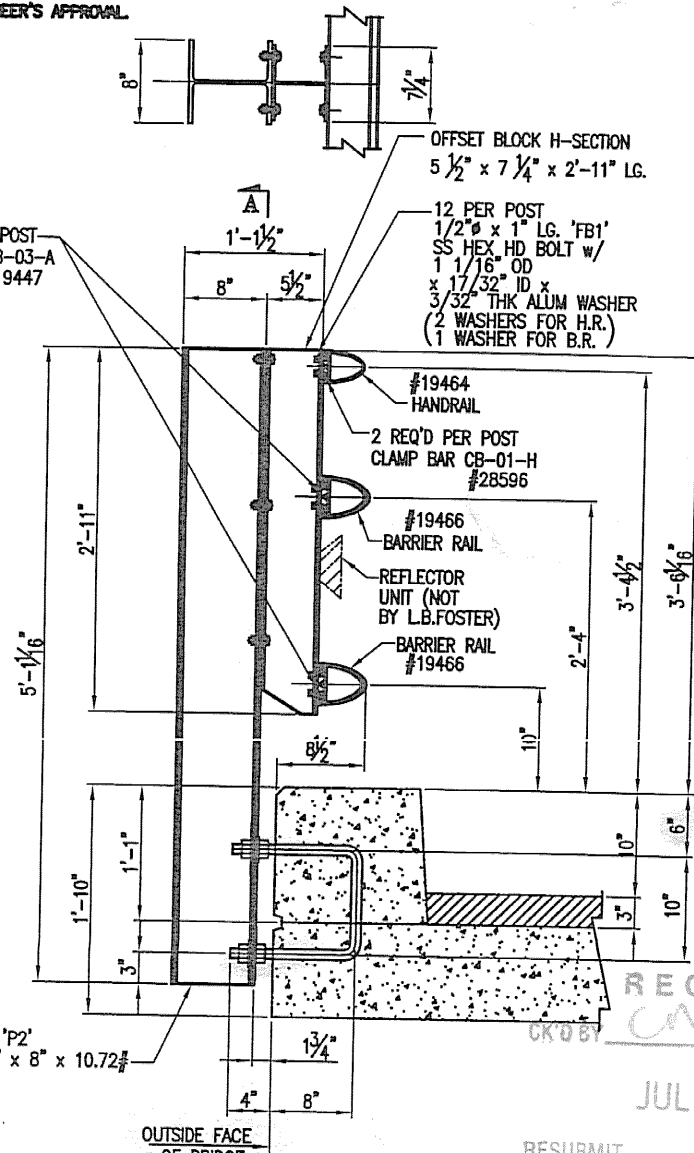
120 ~ REQ'D CLAMP
 BAR: CS-03-A #19447
 (BARRIER RAIL)
 ALL ALUM. COMPONENTS SHALL BE ANODIZED TO A BLACK (DIAZ. SODIUM PASTE) COLOR, FED. STD. COLOR No. 27035.
 THE ANODIC COATING SHALL BE ARCHITECTURAL CLASS 1 WITH A MIN. THICKNESS OF 0.7 MIL AND A MIN. WEIGHT OF 35 mg/m².
 ALL WELDABLE STL. HARDWARE SHALL BE FIELD PAINTED BLACK TO MATCH THE ANODIZED RAIL. TOUCH UP PAINT SHALL BE PROVIDED.
 SAMPLES SHALL BE SUBMITTED FOR THE ENGINEER'S APPROVAL.



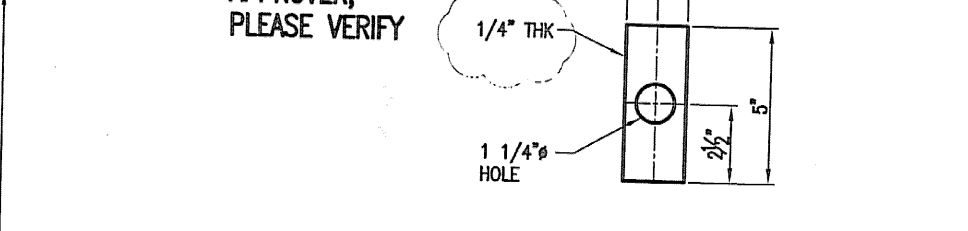
60 ~ REQ'D CLAMP
 BAR: CS-03-H #22596
 (BARRIER RAIL)
 ALL ALUM. COMPONENTS SHALL BE ANODIZED TO A BLACK (DIAZ. SODIUM PASTE) COLOR, FED. STD. COLOR No. 27035.
 THE ANODIC COATING SHALL BE ARCHITECTURAL CLASS 1 WITH A MIN. THICKNESS OF 0.7 MIL AND A MIN. WEIGHT OF 35 mg/m².
 ALL WELDABLE STL. HARDWARE SHALL BE FIELD PAINTED BLACK TO MATCH THE ANODIZED RAIL. TOUCH UP PAINT SHALL BE PROVIDED.
 SAMPLES SHALL BE SUBMITTED FOR THE ENGINEER'S APPROVAL.



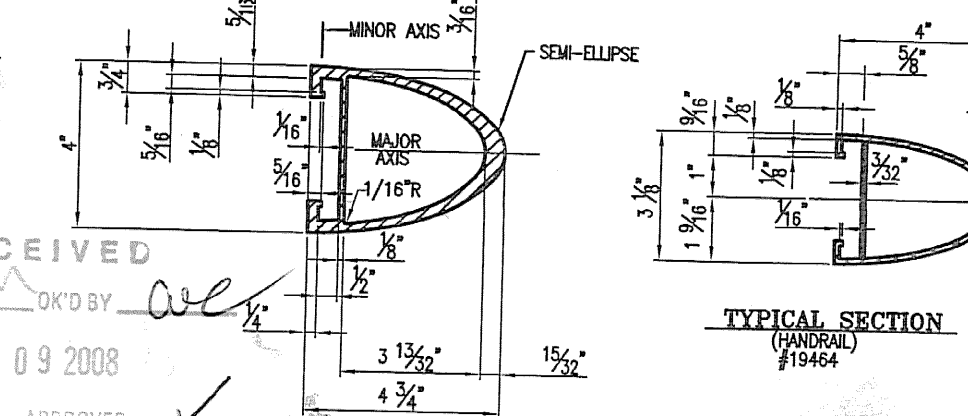
30 ~ REQ'D FABRICATED RAIL POSTS '1P'
 (CURBSIDE/REFLECTOR UNITS TO BE SUPPLIED & PLACED BY OTHERS)



30 ~ REQ'D OFFSET BLOCK 'OP' H-SECTION DETAIL
 OFFSET BLOCK H-SECTION
 5 1/2" x 7 1/4" x 2'-11" LG.
 12 REQ'D PER POST
 3/16" x 1 1/2" SLOTS
 1 1/2" x 1 1/2" HOLES
 6 REQ'D PER POST
 3/16" HOLES



120 ~ REQ'D ALUM. PLATE WASHER 'PW1'
 1 1/4" THK
 1 1/4" HOLE



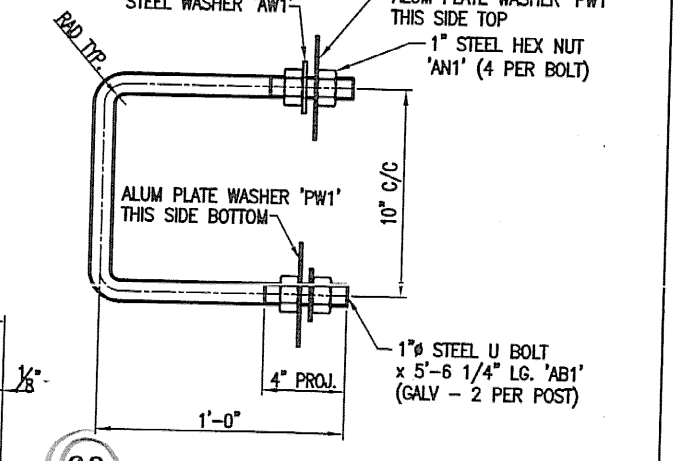
60 ~ REQ'D ANCHOR BOLTS 'AB1'
 1" STEEL U BOLT
 x 5'-5 1/4" LG. 'AB1'
 (GALV - 2 PER POST)

GENERAL NOTES
 ALL MATERIAL AND WORKMANSHIP SHALL BE IN ACCORDANCE WITH VERMONT AGENCY OF TRANSPORTATION STANDARD SPECIFICATIONS FOR CONSTRUCTION DATED 2006 AND ITS LATEST REVISIONS.

DESCRIPTION	ASTM ALLOY/GR.	REMARKS
RAIL POST SLOTS	B221	6061-T6 OR MIN. YIELD STRENGTH 17 * 35,000 PSI
CLAMP BWS, PW & OTHER BOLTS		
STAINLESS STEEL BOLTS	A193	GRADE B8
WASHER U-BOLTS	A449	GALV. A193
STEEL HEX NUTS	A563	GRADE D17 GALV. A193
STEEL WASHERS	F436	GALV. A193
PLATE WASHERS	AL6061	AL6061
ALUMINUM WASHERS	B209	6061-T6

POSTS TO BE NORMAL TO GRADE AND RAILS SHALL BE PARALLEL TO GRADE. RAILS TO BE ATTACHED TO A MINIMUM OF THREE POSTS WHEN POSSIBLE.
 ALL BWS AND WELDS TO BE FREE FROM ALL BURRS AND ROUGH EDGES. ENDS OF TUBE SECTIONS SHALL BE SAWED OR MILLED.
 CORN ALL CUT EDGES SMOOTH.
 ALL THREADS TO BE UNC CLASS 2A/2B.
 ALL EXTRUSION TOLERANCES NOT SHOWN SHALL BE IN ACCORDANCE WITH ASTM B221.
 IF CUT THREADS ARE USED, BOLT DIAMETER SHALL NOT BE LESS THAN NOMINAL DIAMETER. IF ROLLER THREADS ARE USED, BOLT DIAMETER SHALL NOT BE LESS THAN THE ROOT DIAMETER OF THREADS.

THE SPLICE BAR SHALL BE ATTACHED TO THE RAIL ELEMENT AS FOLLOWS:
 THE RAIL SPLICE AT THE BRIDGE EXPANSION JOINT SHALL BE FASTENED ON BOTH SIDES OF THE RAIL SPLICE USING THE FULLY THREADED WASHER FACED BOLTS, TIGHTENED SECURELY TO THE END OF THREADS, AND LEAVING A 1/8" GAP. THIS ALLOWS EXPANSION ON BOTH SIDES OF THE JOINT.
 ALL NUTS SHALL COMPLY WITH AMERICAN HEXAGON ANS SPECIFICATIONS B18.2



PROJECT No. BR2 144(19) C/2
 ITEM No. 900.640
 APPROVED: [Signature]
 DRAWING

L.B. FOSTER COMPANY
 1014 CROMBIE ROAD
 PITTSBURGH, PENNSYLVANIA 15220
 FOR: A. D. ROSSI CORPORATION
 VERMONT AGENCY OF TRANSPORTATION
 TOWN OF EDWALL COUNTY OF BENNINGTON
 BRIDGE RAILING FOR BRIDGE #41, TH 24, CL3 (LOCAL)
 3" ALUM BRIDGE RAILING - GENERAL NOTES & TYP. DETAILS
 DATE: 06/18/08
 CHECK: B.L. DATE: 06/18/08
 DRAWING: 434

RECEIVED
 JUL 09 2008
 OK'D BY [Signature]
 RESUBMIT APPROVED [Signature]
 BY DATE