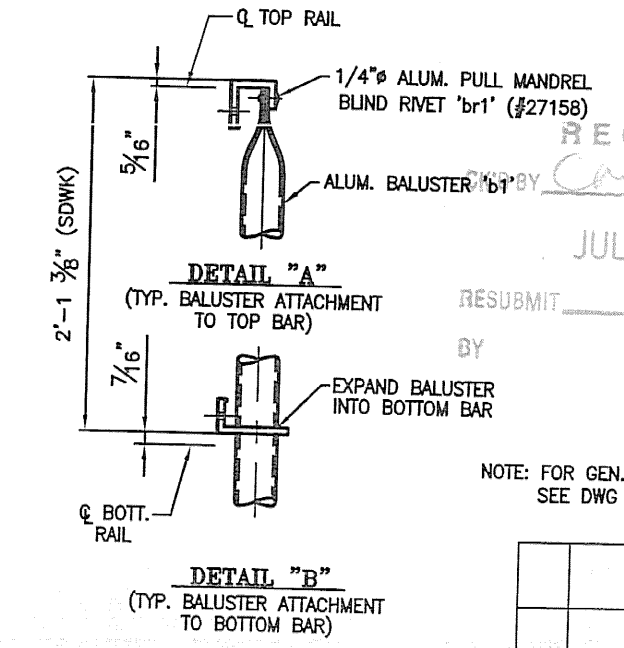
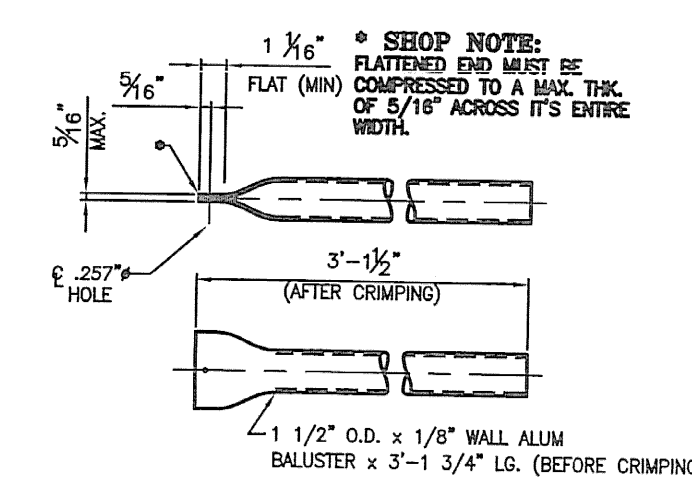


MARK	QTY	"a"	"b"	"c"	"d"	"e"	"f"	"g"	"h"	"i"	"j"	"k"	PANEL ASSY.
bb1	1	5'-8 5/16"	2 5/8"	9	5'-3"	2 11/16"	1"	5 3/16"	4	4'-8"	5 1/8"	1"	BP1
bb2	17	7'-2 15/16"	4 15/16"	11	6'-5"	5"	2"	6 7/16"	5	5'-10"	6 7/16"	2 1/16"	BP2
bb7	1	7'-3"	5"	11	6'-5"	5"	2"	6 1/2"	5	5'-10"	6 1/2"	2"	BP7
bb13	1	5'-8 3/8"	2 11/16"	9	5'-3"	2 11/16"	1"	5 3/16"	4	4'-8"	5 3/16"	1"	BP13



RECEIVED
 JUL 09 2008
 APPROVED BY: [Signature]
 FOR: A. D. ROSSI CORPORATION
 VERMONT AGENCY OF TRANSPORTATION
 TOWN OF POWHAT, COUNTY OF BENNINGTON
 BRIDGE RAILING FOR BRIDGE #41, TH 26, CL3 (LOCAL)
 ALUM BRIDGE RAILING - BALUSTER PANEL DETAILS
 MADE: CMS DATE 06/29/08, JOB NO. AR2456, DIST. NO. [blank]
 CHECKED: [blank], DATE 06/18/08, DRAWING: LBA, REV. NO. [blank]

336 ~ REQ'D BALUSTERS 'b1'
 #19451