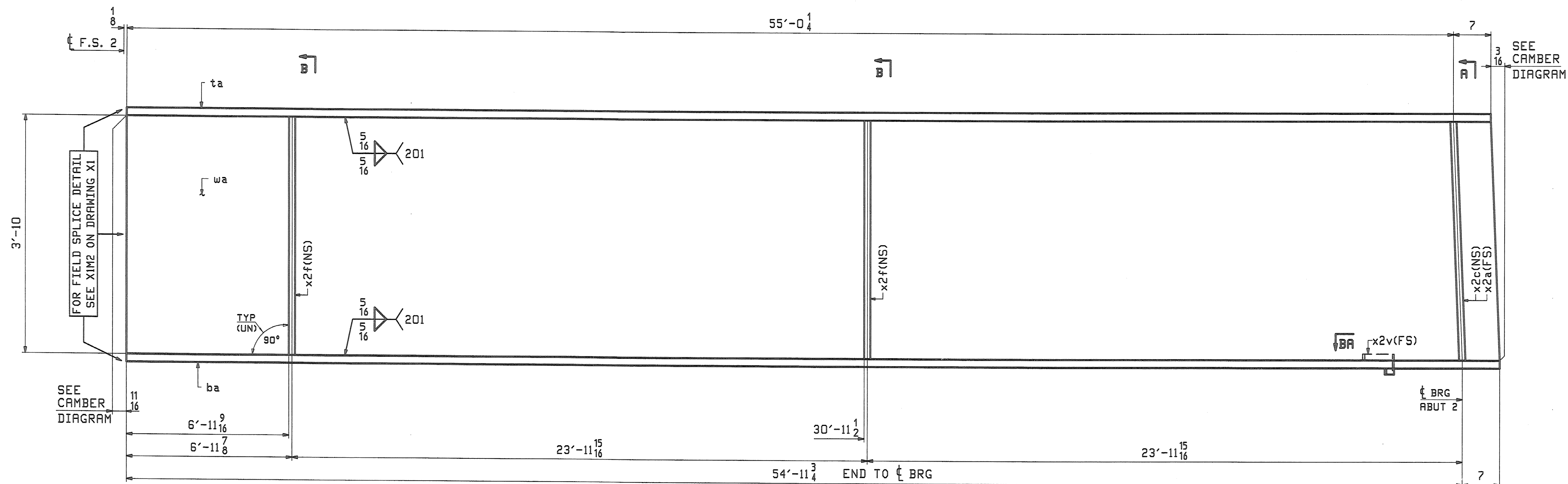
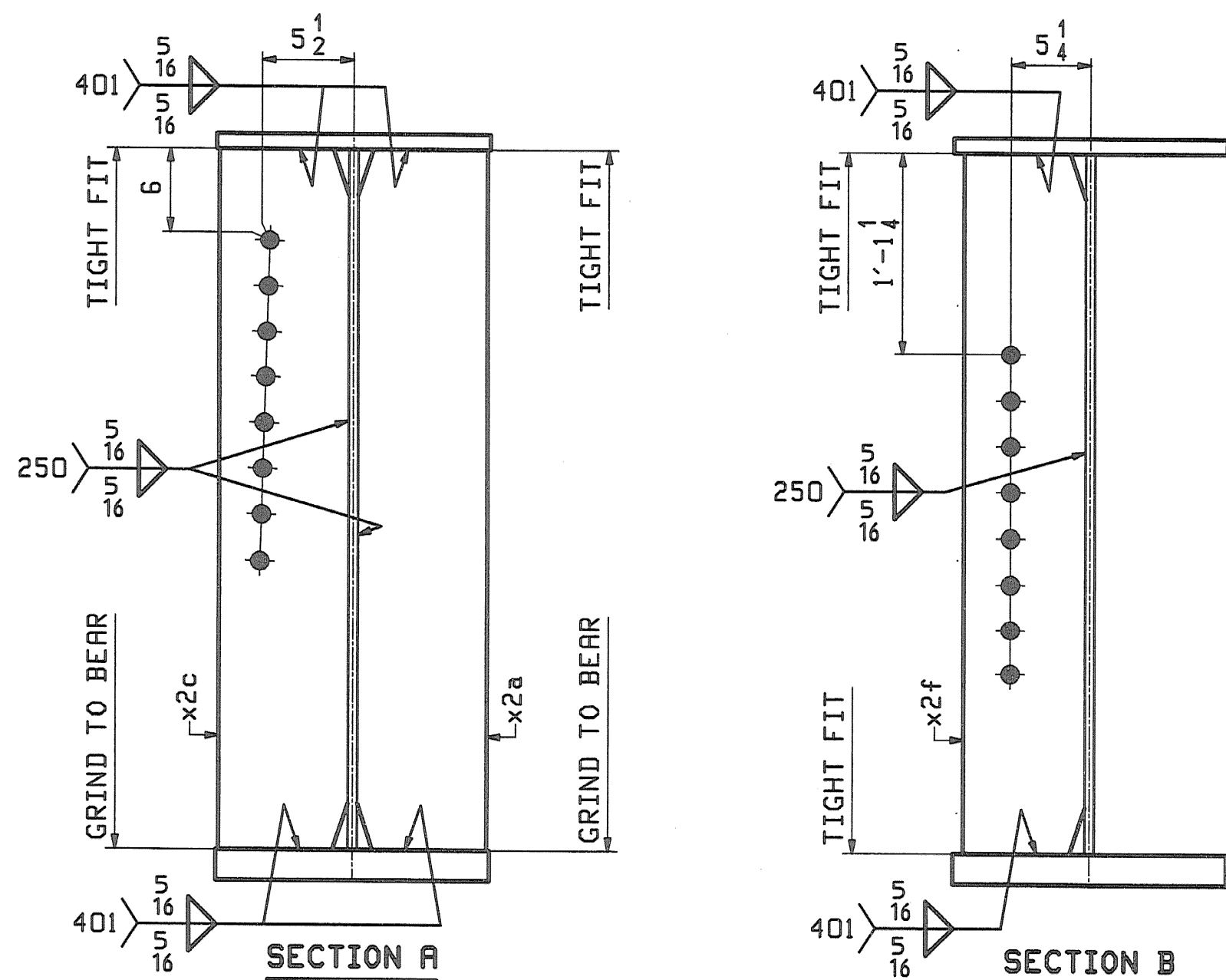
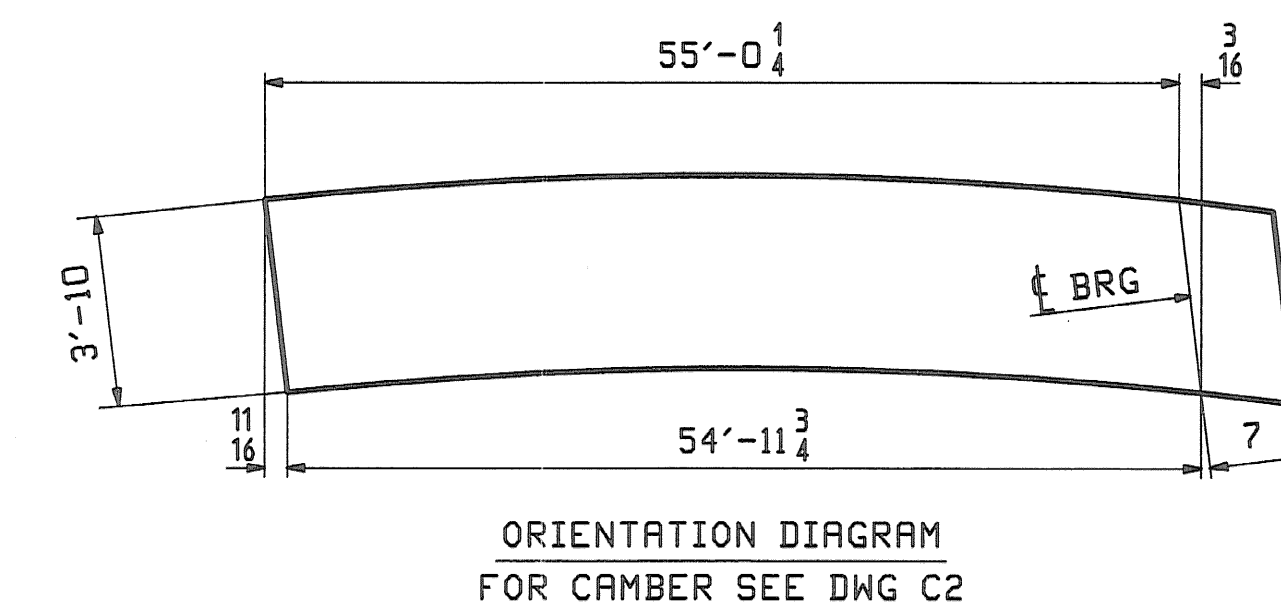
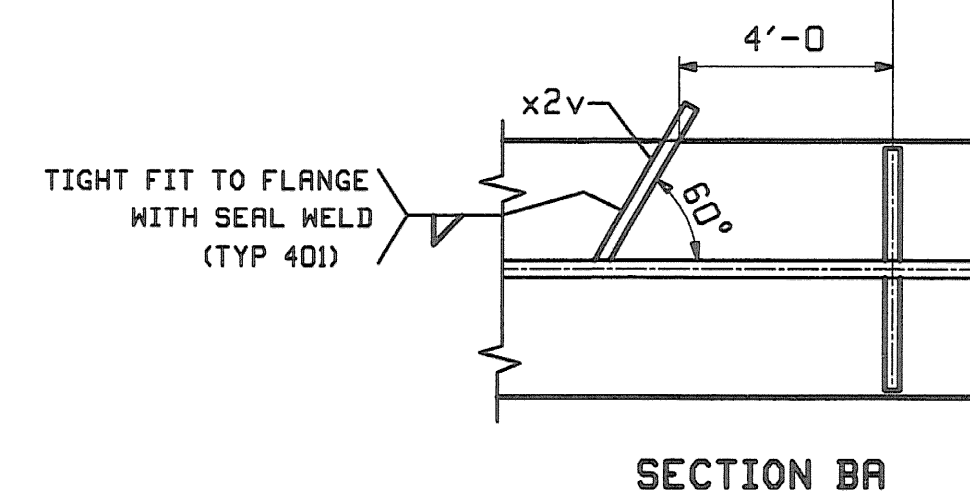


| ABM INFO |      | SHIP  | BILL OF MATERIAL |      |                                   | JOB NO.             | DRAWING NO.         | REV. |                   |
|----------|------|-------|------------------|------|-----------------------------------|---------------------|---------------------|------|-------------------|
| PAGE     | LINE | MARK  | QTY              | MARK | MATERIAL                          | LENGTH<br>FT INCHES | REMARKS             | WT   | PROCUREMENT NOTES |
|          |      | 11GIC | 1                |      | GIRDER                            |                     |                     |      | 12577             |
| 1        | Q    |       | 1                | wa   | PL $\frac{5}{8}$ x46              | 55 7 $\frac{7}{16}$ | (A709-50WT2) (H2-3) |      |                   |
| 1        | G    |       | 1                | ta   | PL 1x18                           | 55 7 $\frac{7}{16}$ | (A709-50WT2) (H2-3) |      |                   |
| 1        | G    |       | 1                | ba   | PL 1x18                           | 55 6 $\frac{3}{4}$  | (A709-50WT2) (H2-3) |      |                   |
| 2        | N    |       | 1                | x2a  | PL $\frac{7}{8}$ x8 $\frac{1}{2}$ | 3 10                | MIF                 |      |                   |
| 2        | N    |       | 1                | x2c  | PL $\frac{7}{8}$ x8 $\frac{1}{2}$ | 3 10                | MIF                 |      |                   |
| 2        | P    |       | 2                | x2f  | PL $\frac{5}{8}$ x8               | 3 10                |                     |      |                   |
| 2        | R    |       | 1                | x2v  | PL $\frac{1}{4}$ x3               | 1 0 $\frac{3}{16}$  |                     |      |                   |



**ONE - GIRDER - 11GIC**

FOR GIRDER STANDARDS SEE DRAWINGS X1 & X2.  
 FOR CAMBER & FLANGE DIAGRAMS SEE DRAWING C2.  
 FOR GENERAL NOTES & WELD PROCEDURES SEE DRAWING GN1.  
 H2-3 DENOTES MATERIAL SUBJECT TO CHARPY V-NOTCH TESTING.



RECEIVED  
 MAY 15 2008  
 APPROVED

|                                                                                                                       |      |                        |         |             |       |             |
|-----------------------------------------------------------------------------------------------------------------------|------|------------------------|---------|-------------|-------|-------------|
| REV.                                                                                                                  | DATE | REMARKS                | DWN     | CHK         | APVL  | SHOP        |
| 0                                                                                                                     |      |                        |         |             |       | 5-12-08     |
| MATERIAL:                                                                                                             |      | SURFACE PREP. & PAINT: |         | HOLES:      |       | SHOP BOLTS: |
| A709-50W (UN)                                                                                                         |      | SEE DWG GN1            |         | 15<br>16" Ø |       | NONE        |
| DESCRIPTION: GIRDER - 11GIC                                                                                           |      |                        |         |             |       |             |
| CASCO BAY STEEL STRUCTURES, INC.<br>75 SPRING HILL ROAD SACO, MAINE 04072<br>PHONE (207) 282-7360 FAX. (207) 282-1179 |      |                        |         |             |       |             |
| STRUCTURE: TH24 over Hoosic River<br>BRIDGE NO. 41<br>POWNAL, VERMONT<br>COUNTY OF BENNINGTON                         |      |                        |         | DRAWN:      | DATE: |             |
|                                                                                                                       |      |                        |         | JTB         | 04/25 |             |
|                                                                                                                       |      |                        |         | CHKD:       | DATE: |             |
|                                                                                                                       |      |                        |         | TM          | 05/05 |             |
| LOCATION: TOWN OF POWNAL                                                                                              |      |                        | JOB NO. | DWG NO.     |       |             |
| PROJ NO. BRZ 1441 (19) C/2                                                                                            |      |                        | 367     | 11          |       |             |
| CUSTOMER: VERMONT AGENCY OF TRANSPORTATION                                                                            |      |                        |         | REV. ▲      |       |             |