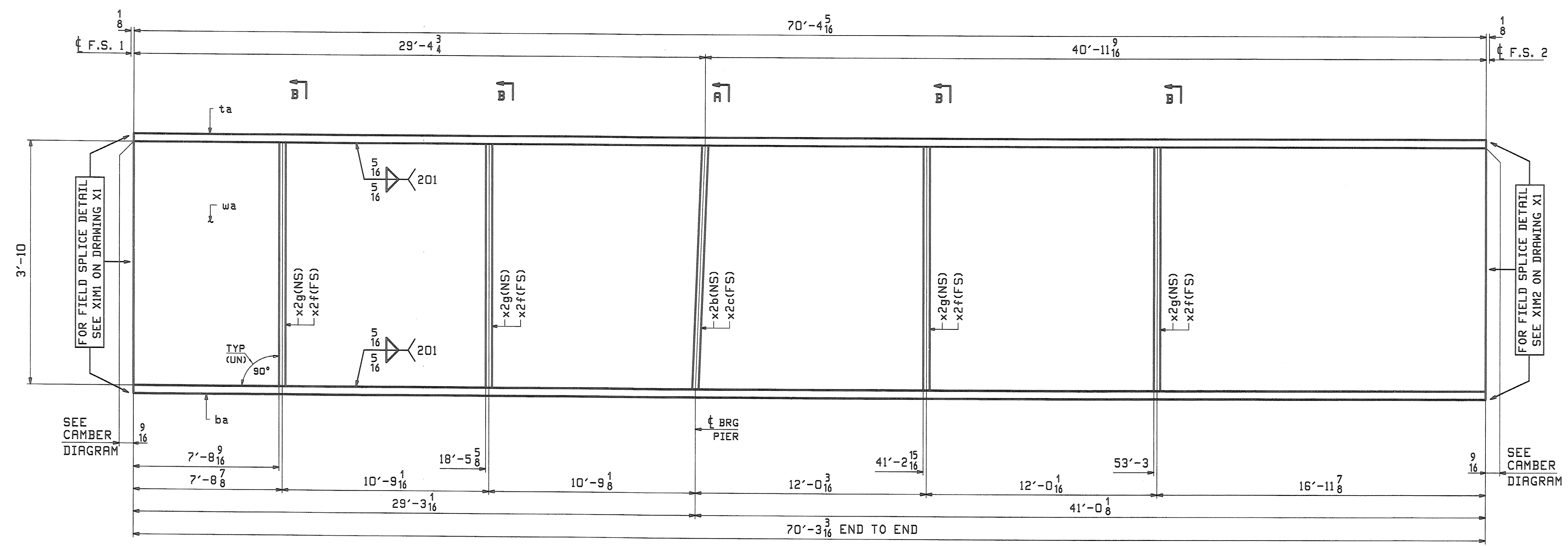
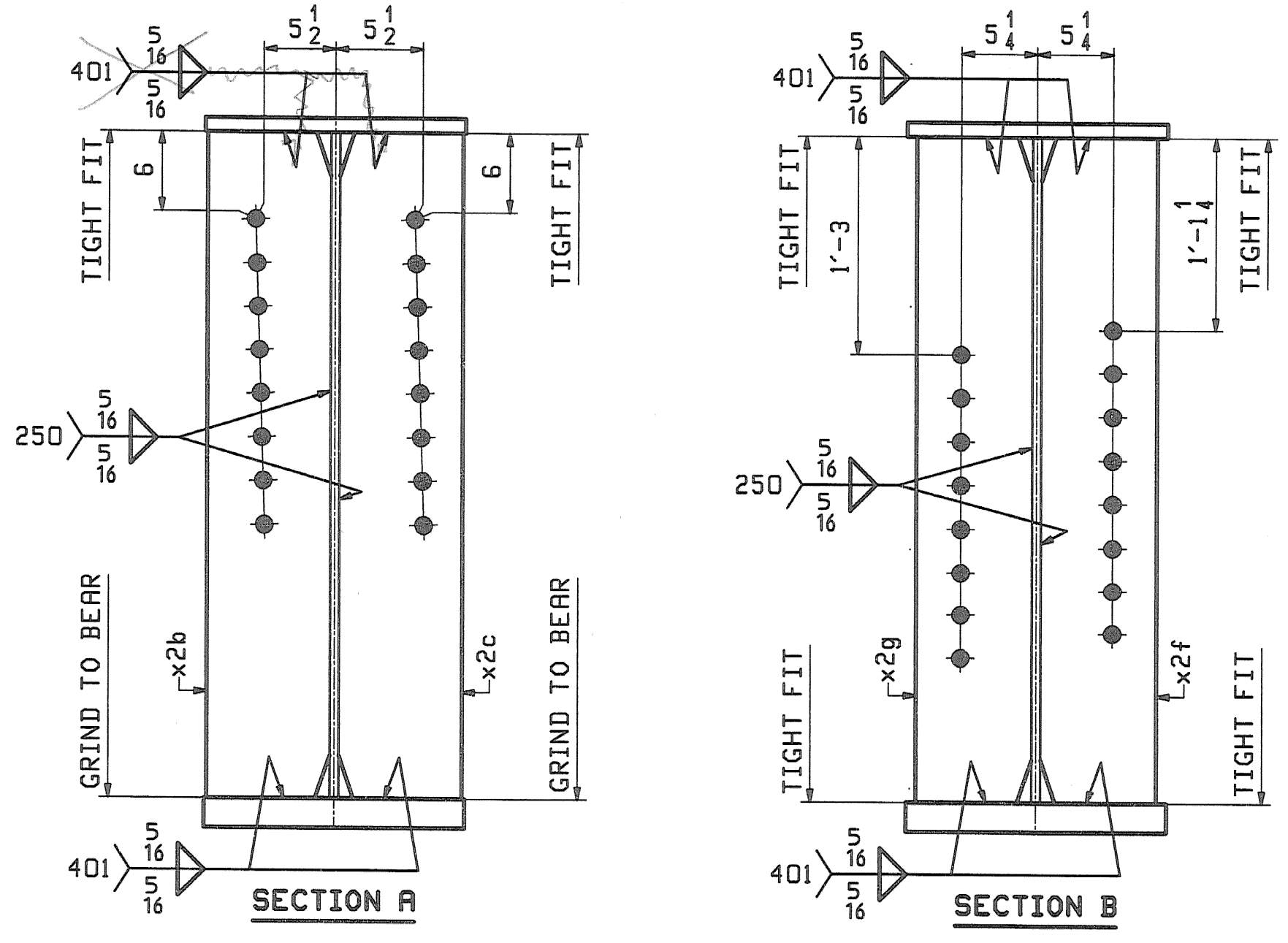
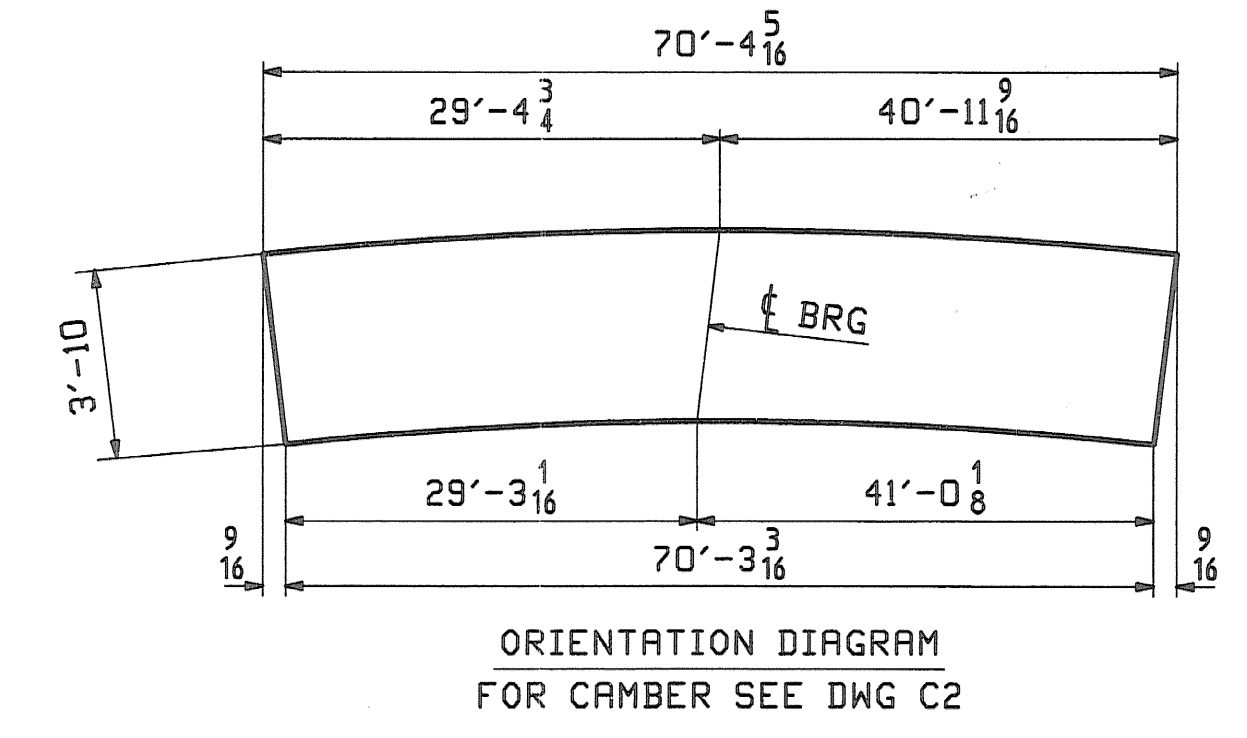


JOB NO.		DRAWING NO.		REV.						
367		9								
PAGE	LINE	MARK	QTY	MARK	MATERIAL	LENGTH		REMARKS	WT	PROCUREMENT NOTES
						FT	INCHES			
				9G4B	1	GIRDER				24826
1	N		1	wa	PL 5/8x46	70	4 5/16	(A709-50WT2)		(H2-3)
1	E		1	ta	PL 2x18	70	4 5/16	(A709-50WT2)		(H2-3)
1	E		1	ba	PL 2x18	70	3 3/16	(A709-50WT2)		(H2-3)
2	N		1	x2b	PL 7/8x8 1/2	3	10	M1F		
2	N		1	x2c	PL 7/8x8 1/2	3	10	M1F		
2	P		4	x2f	PL 5/8x8	3	10			
2	P		4	x2g	PL 5/8x8	3	10			



**ONE - GIRDER - 9G4B**

FOR GIRDER STANDARDS SEE DRAWINGS X1 & X2.  
 FOR CAMBER & FLANGE DIAGRAMS SEE DRAWING C2.  
 FOR GENERAL NOTES & WELD PROCEDURES SEE DRAWING GN1.  
 H2-3 DENOTES MATERIAL SUBJECT TO CHARPY V-NOTCH TESTING.



RECEIVED  
 CKD BY WBL OKD BY CMC  
 MAY 15 2008  
 RESUBMIT APPROVED BY WTD  
 BY DATE

0					5-12-08	
REV.	DATE	REMARKS	DWN	CHK	APVL	SHOP
		MATERIAL: A709-50W (UN)				SHOP BOLTS: NONE
		SURFACE PREP. & PAINT: SEE DWG GN1				
		HOLES: 15/16" Ø				
DESCRIPTION: GIRDER - 9G4B						
CASCO BAY STEEL STRUCTURES, INC. 75 SPRING HILL ROAD SACO, MAINE 04072 PHONE (207) 282-7360 FAX. (207) 282-1179						
STRUCTURE: TH24 over Hoosic River BRIDGE NO. 41 POWNAL, VERMONT COUNTY OF BENNINGTON			DRAWN: JTB CHKD: TM		DATE: 04/25 DATE: 05/05	
LOCATION: TOWN OF POWNAL			JOB NO. 367		DWG NO. 9	
PROJ NO. BRZ 1441 (19) C/2					REV. Δ	
CUSTOMER: VERMONT AGENCY OF TRANSPORTATION						