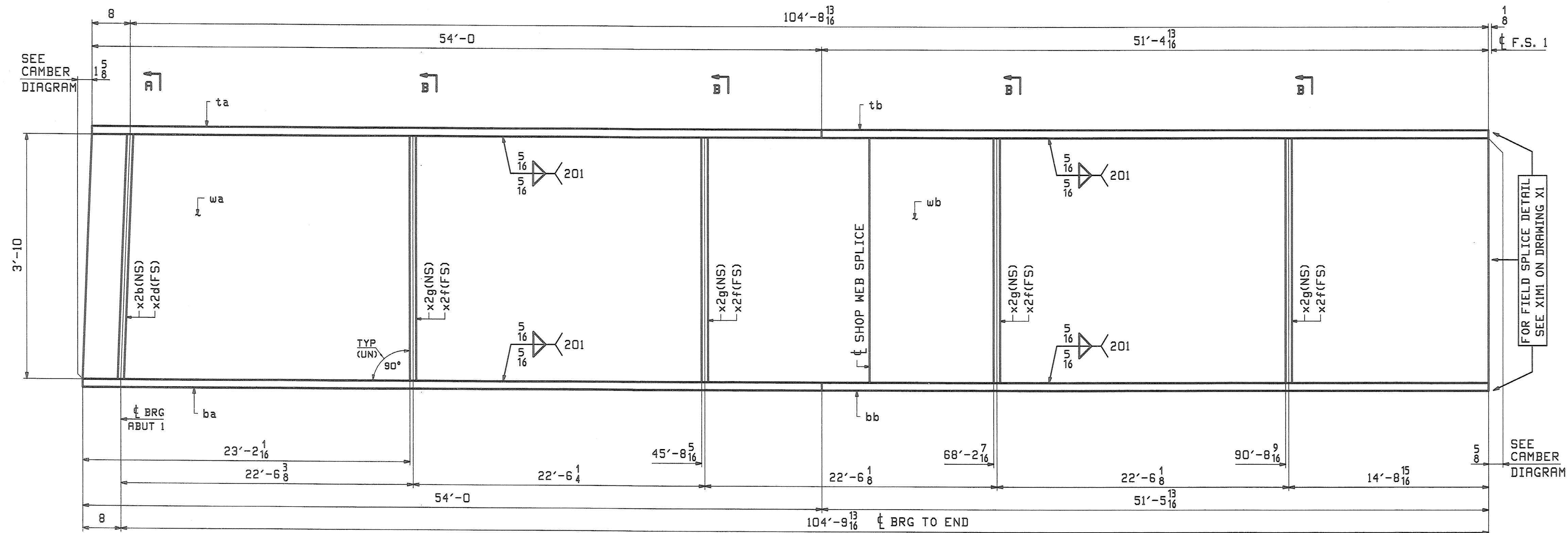
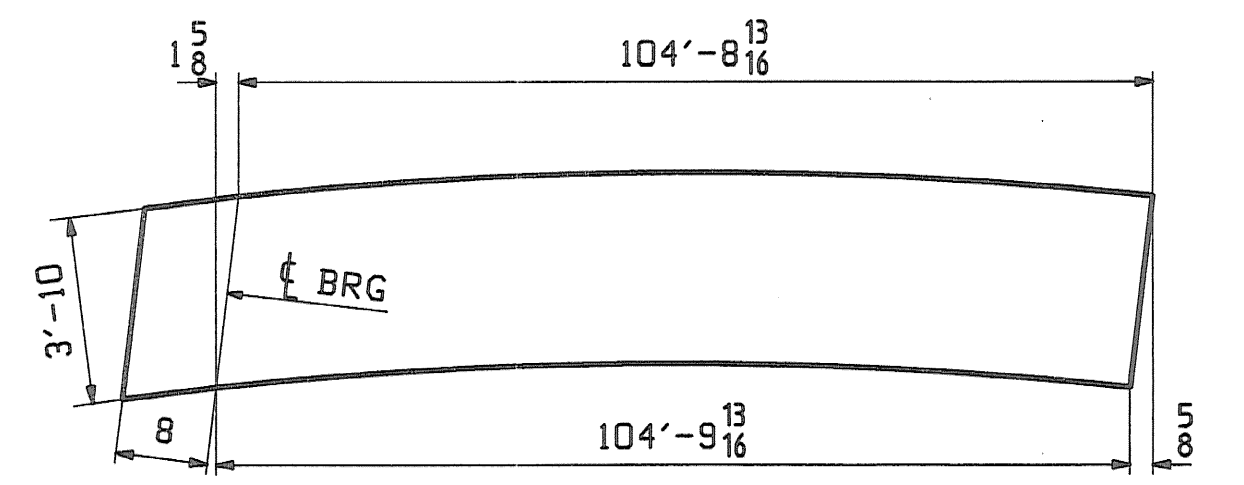
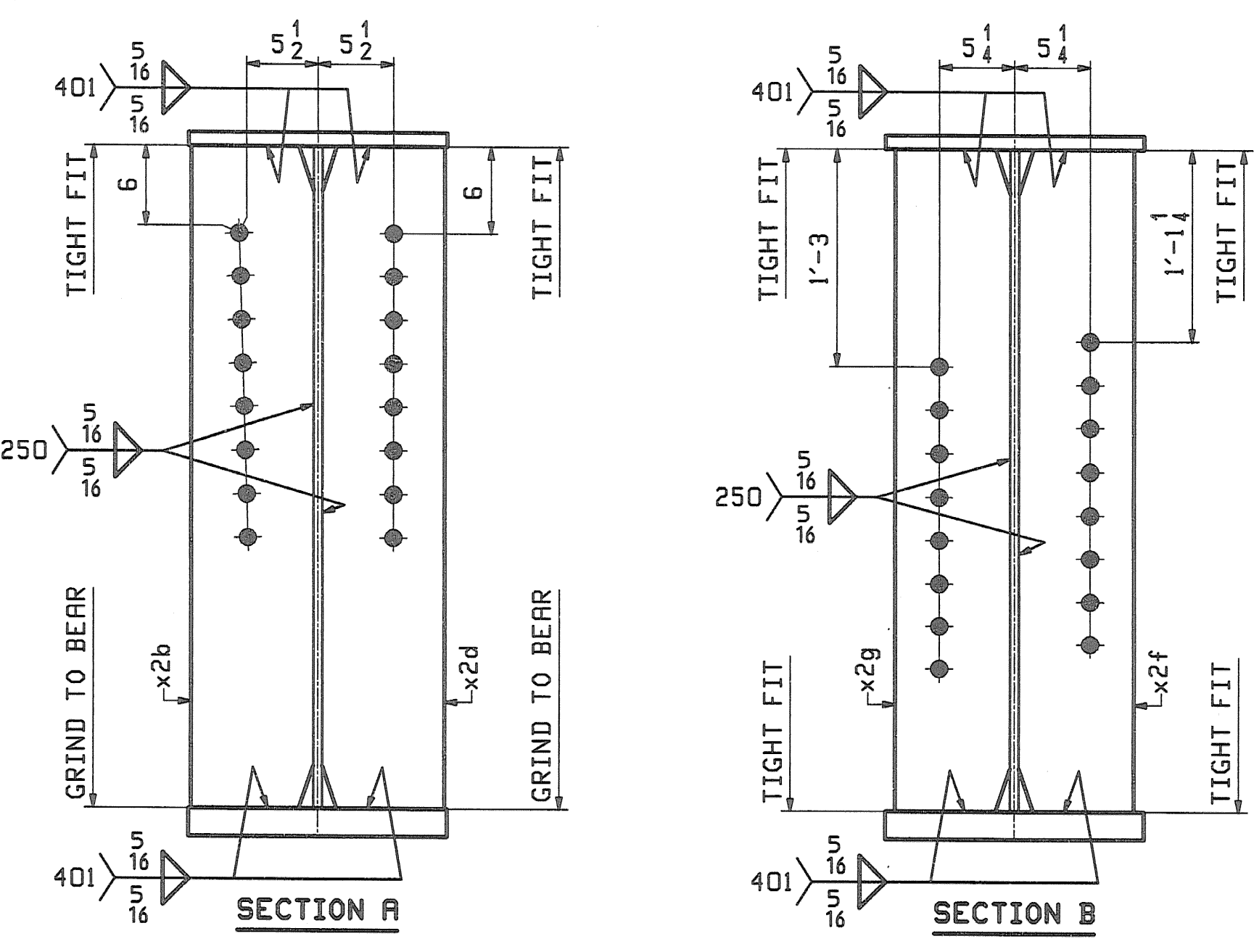


ABM INFO		SHIP				BILL OF MATERIAL		JOB NO.	DRAWING NO.	REV.
								367	3	
PAGE	LINE	MARK	QTY	MARK	MATERIAL	LENGTH		REMARKS	WT	PROCUREMENT NOTES
						FT	INCHES			
					3G3A					32035
1	S		1	wa	PL 5/8x46	57	0 1/4	(A709-50WT2) (H2-3)		
1	U		1	wb	PL 5/8x46	48	6 7/16	(A709-50WT2) (H2-3)		
1	J		1	ta	PL 1x18	54	0	(A709-50WT2) (H2-3)		
1	L		1	tb	PL 1x18	51	4 13/16	(A709-50WT2) (H2-3)		
1	A		1	ba	PL 2 1/4x18	54	0	(A709-50WT2) (H2-4)		
1	C		1	bb	PL 2 1/4x18	51	5 13/16	(A709-50WT2) (H2-4)		
2	N		1	x2b	PL 7/8x8 1/2	3	10	MIF		
2	N		1	x2d	PL 7/8x8 1/2	3	10	MIF		
2	P		4	x2f	PL 5/8x8	3	10			
2	P		4	x2g	PL 5/8x8	3	10			



ONE - GIRDER - 3G3A

FOR GIRDER STANDARDS SEE DRAWINGS X1 & X2.
 FOR CAMBER & FLANGE DIAGRAMS SEE DRAWING C1.
 FOR GENERAL NOTES & WELD PROCEDURES SEE DRAWING GNI.
 H2-3/H2-4 DENOTES MATERIAL SUBJECT TO CHARPY V-NOTCH TESTING.



ORIENTATION DIAGRAM FOR CAMBER SEE DWG C1

RECEIVED
 CK'D BY: *WDL*, OK'D BY: *OWG*
 MAY 15 2008
 RESUBMIT _____ APPROVED _____
 BY _____ DATE _____

REV.	DATE	REMARKS	DWN	CHK	APVL	SHOP
0						5-12-08
MATERIAL:		SURFACE PREP. & PAINT:		HOLES:		SHOP BOLTS:
A709-50W (UN)		SEE DWG GNI		1 1/2" Ø		NONE
DESCRIPTION: GIRDER - 3G3A						
CASCO BAY STEEL STRUCTURES, INC. 75 SPRING HILL ROAD POWELL, VERMONT PHONE (207) 282-7360 FAX. (207) 282-1179						
STRUCTURE: TH24 over Hoosic River BRIDGE NO. 41 POWELL, VERMONT COUNTY OF BENNINGTON				DRAWN: JTB	DATE: 04/24	
				CHKD: TM	DATE: 05/05	
LOCATION: TOWN OF POWELL			JOB NO. 367	DWG NO. 3		
PROJ NO. BRZ 1441 (19) C/2			CUSTOMER: VERMONT AGENCY OF TRANSPORTATION			REV.