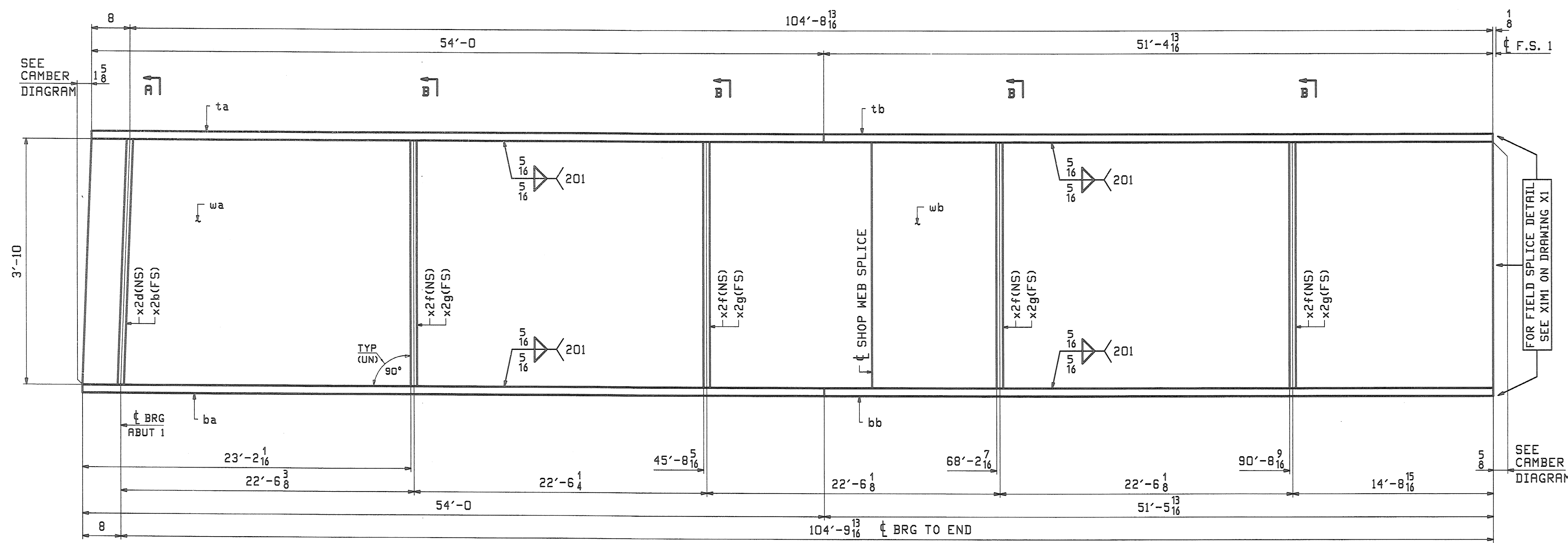
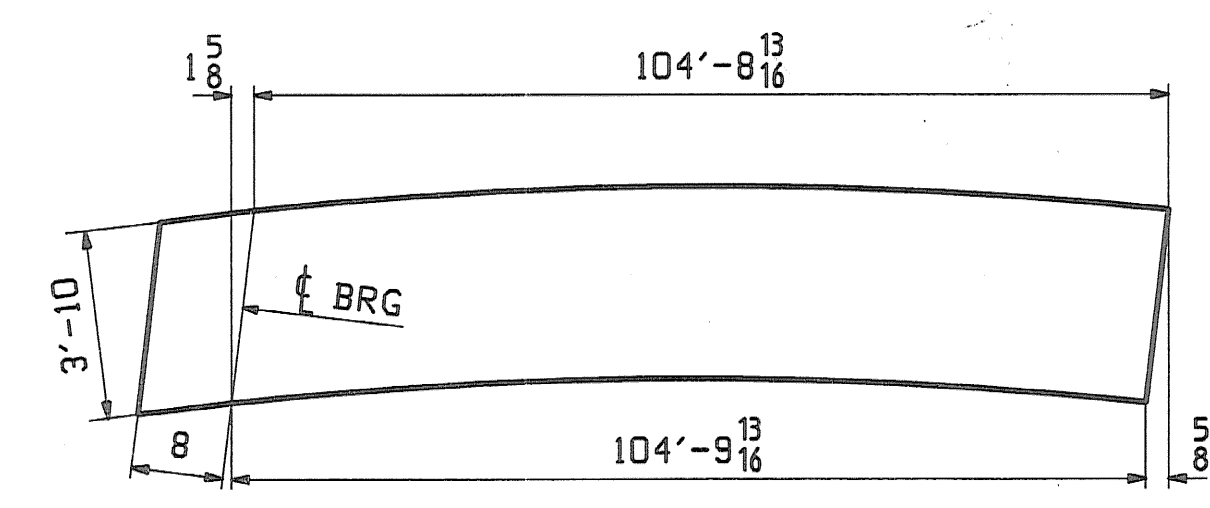


ABM INFO		BILL OF MATERIAL				JOB NO.	DRAWING NO.	REV.
PAGE	LINE	MARK	QTY	MARK	MATERIAL	LENGTH FT INCHES	REMARKS	WT PROCUREMENT NOTES
		2G2A	1		GIRDER			3203
1	S		1	wa	PL $\frac{5}{8}$ x46	57 0 $\frac{1}{2}$	(A709-50WT2) (H2-3)	
1	U		1	wb	PL $\frac{5}{8}$ x46	48 6 $\frac{7}{8}$	(A709-50WT2) (H2-3)	
1	J		1	ta	PL 1x18	54 0	(A709-50WT2) (H2-3)	
1	L		1	tb	PL 1x18	51 4 $\frac{13}{16}$	(A709-50WT2) (H2-3)	
1	A		1	ba	PL 2 $\frac{1}{4}$ x18	54 0	(A709-50WT2) (H2-4)	
1	C		1	bb	PL 2 $\frac{1}{4}$ x18	51 5 $\frac{13}{16}$	(A709-50WT2) (H2-4)	
2	N		1	x2b	PL $\frac{7}{8}$ x8 $\frac{1}{2}$	3 10	MIE	
2	N		1	x2d	PL $\frac{7}{8}$ x8 $\frac{1}{2}$	3 10	MIE	
2	P		4	x2f	PL $\frac{5}{8}$ x8	3 10		
2	P		4	x2g	PL $\frac{5}{8}$ x8	3 10		

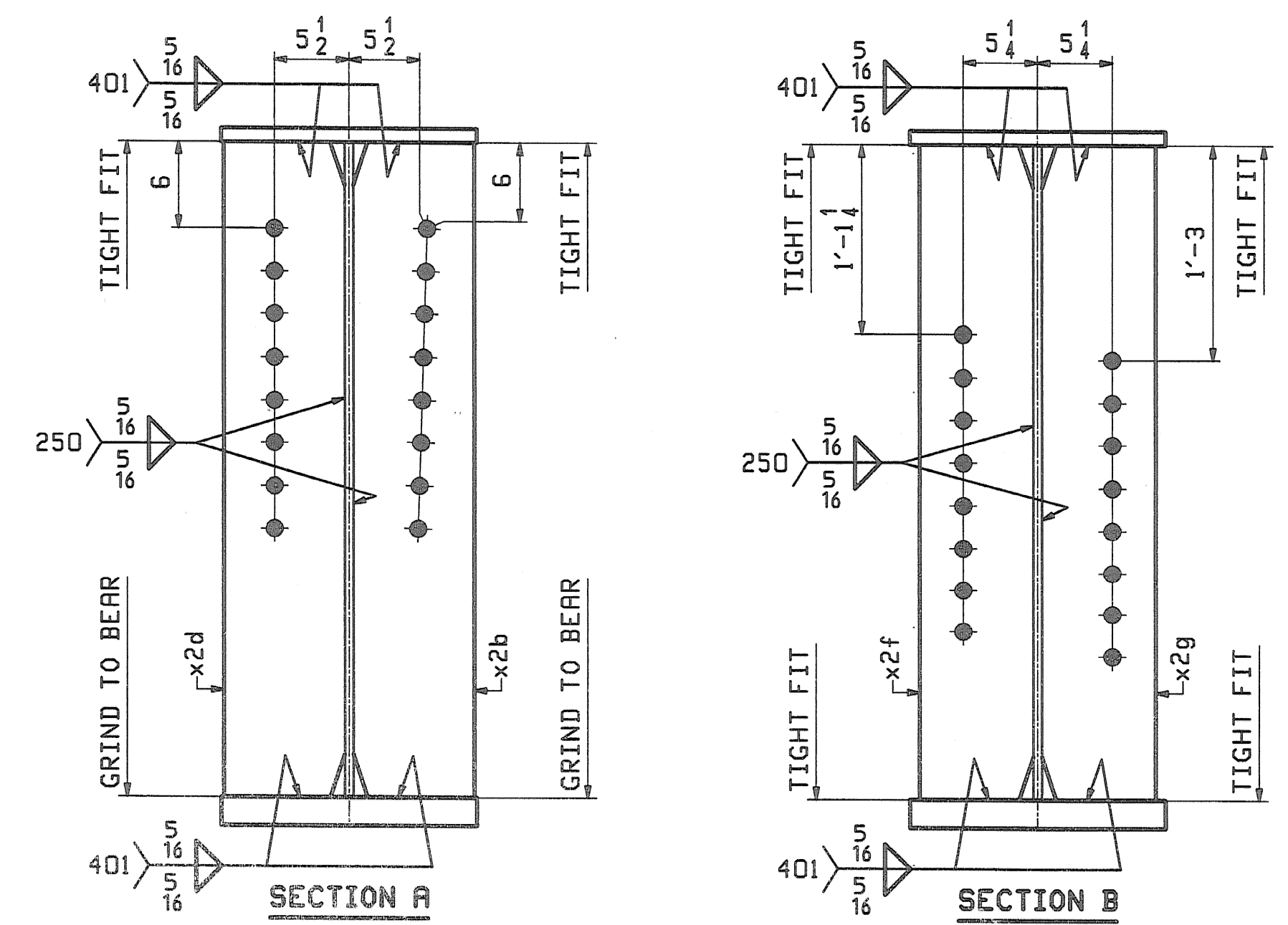


ONE - GIRDER - 2G2A

FOR GIRDER STANDARDS SEE DRAWINGS X1 & X2.
 FOR CAMBER & FLANGE DIAGRAMS SEE DRAWING C1.
 FOR GENERAL NOTES & WELD PROCEDURES SEE DRAWING GNI.
 H2-3/H2-4 DENOTES MATERIAL SUBJECT TO CHARPY V-NOTCH TESTING.



ORIENTATION DIAGRAM FOR CAMBER SEE DWG C1



REV.	DATE	REMARKS	DWN	CHK	APVL	SHOP
0						5-12-08
MATERIAL:		SURFACE PREP. & PAINT:	HOLES:		SHOP BOLTS:	
A709-50W (UN)		SEE DWG GNI	15/16" Ø		NONE	
DESCRIPTION: GIRDER - 2G2A						
CASCO BAY STEEL STRUCTURES, INC. 75 SPRING HILL ROAD POWNA, VERMONT PHONE (207) 282-7360 FAX. (207) 282-1179						
STRUCTURE: TH24 over Hoosic River BRIDGE NO. 41 POWNA, VERMONT COUNTY OF BENNINGTON			DRAWN:	JTB	DATE:	04/24
			CHKD:	TM	DATE:	05/05
LOCATION: TOWN OF POWNA			JOB NO.		DWG NO.	
PROJ NO. BRZ 1441 (19) C/2			367		2	
CUSTOMER: VERMONT AGENCY OF TRANSPORTATION					REV.	

RECEIVED
 MAY 15 2008
 RESUBMIT APPROVED
 BY DATE