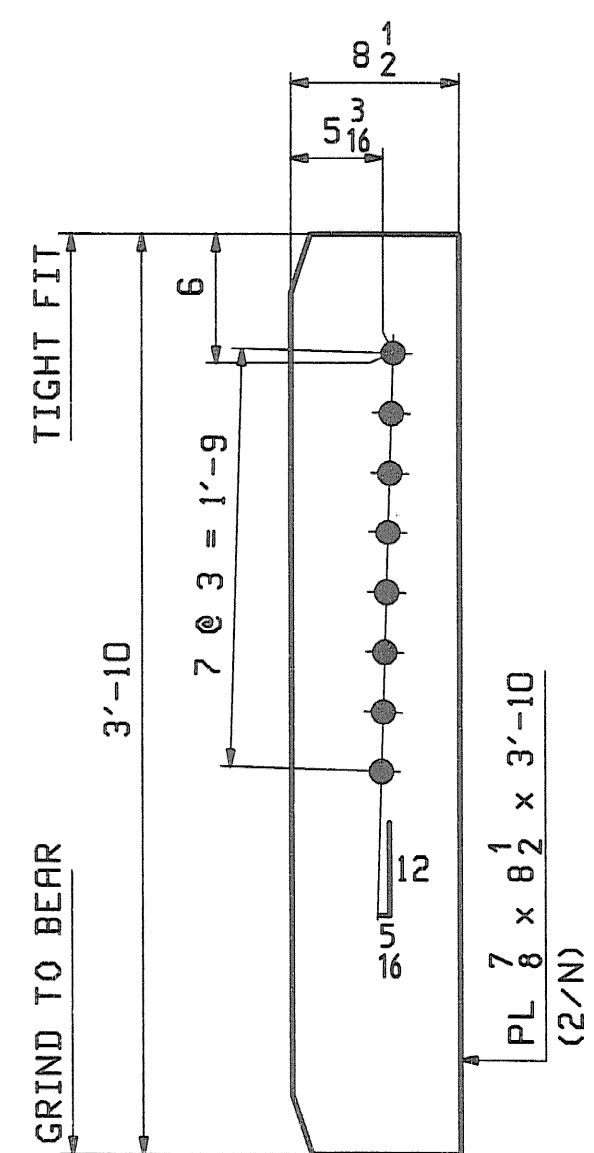
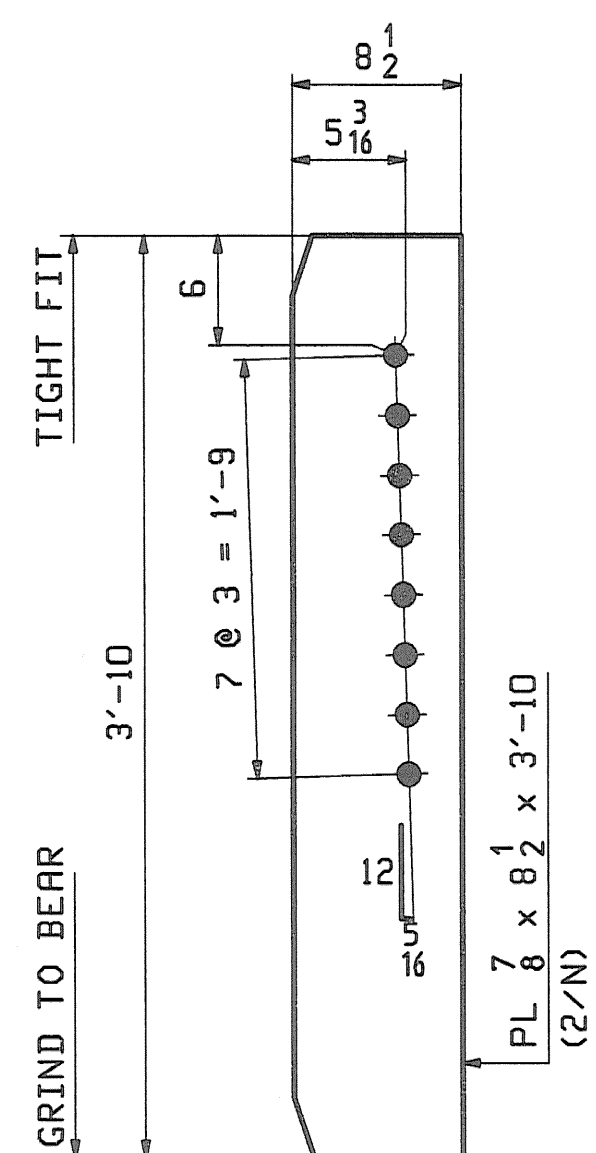


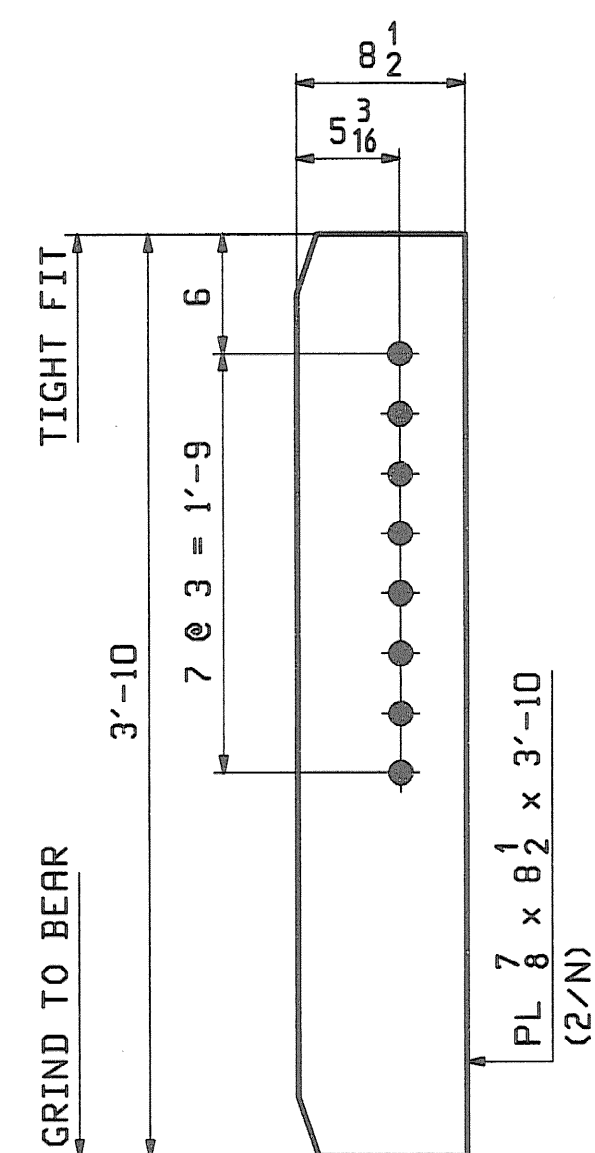
6 ~ x2a
BRG STIFF - FASCIA



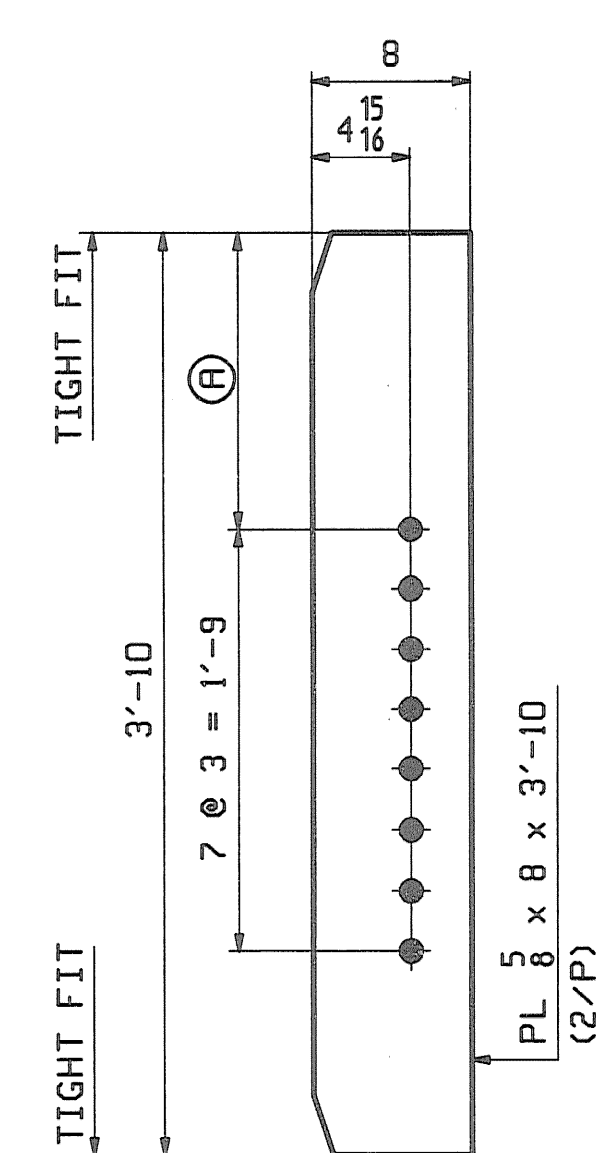
9 ~ x2b
BRG STIFF - HIGH END
DROPS 1/2 to 2



9 ~ x2c
BRG STIFF - LOW END
DROPS 1/2 to 2



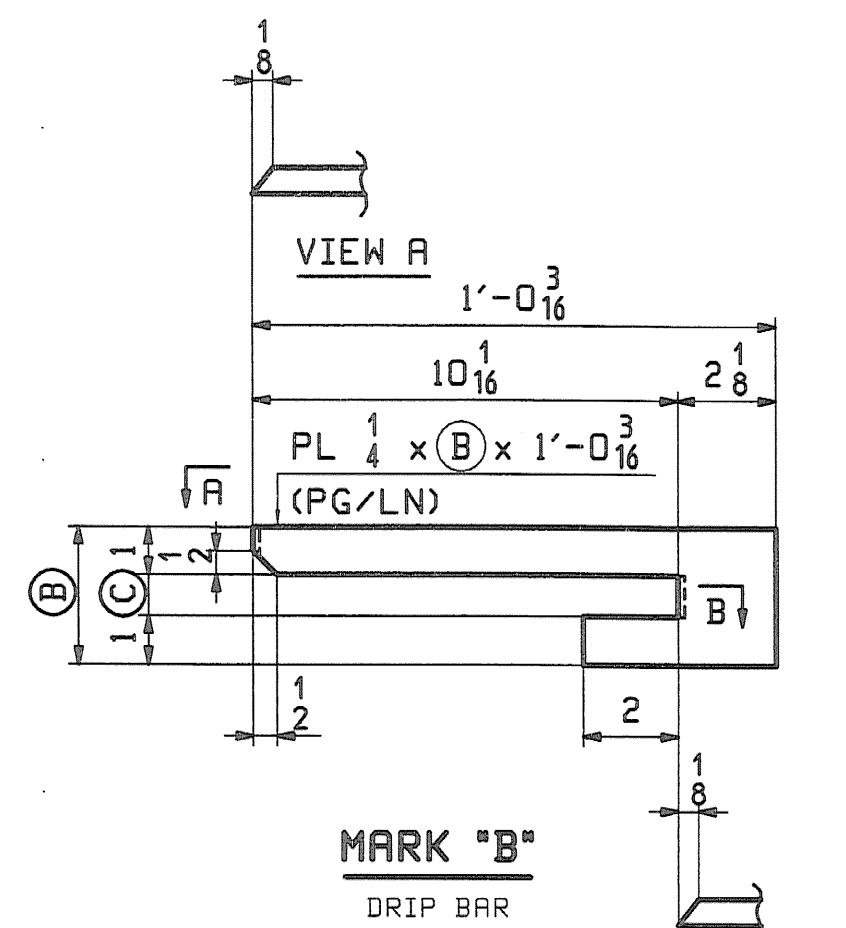
6 ~ x2d
BRG STIFF - DROP = 0



MARK "A"
INT DIAPH CONN.

MARK "A"	QTY	ⓐ
x2f	50	1'-1 1/4
x2g	30	1'-3

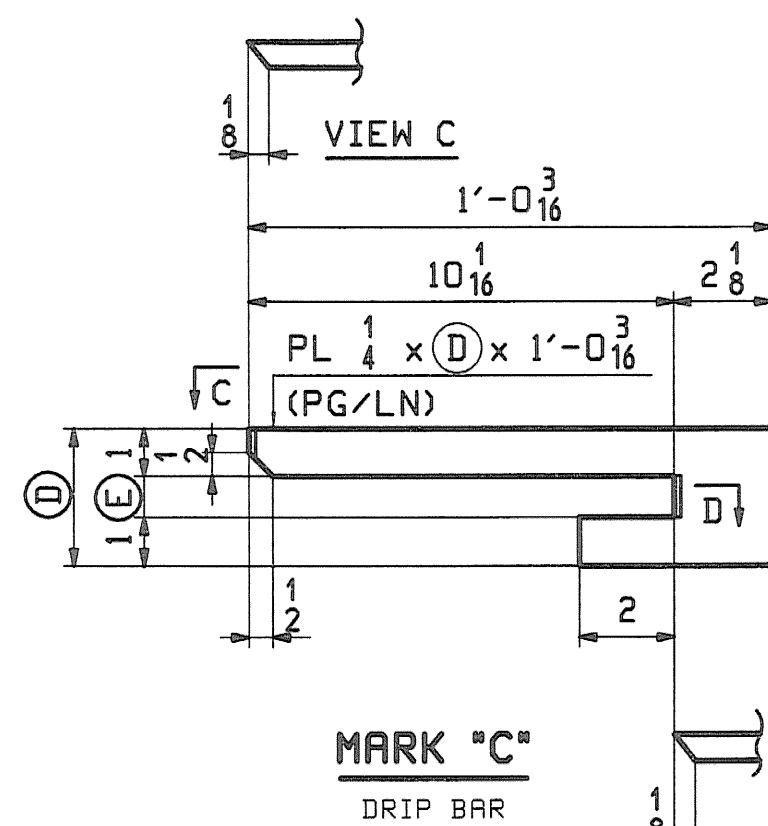
LOW END & DROP = 0
HIGH END (DROPS 1/2 to 1 1/2)



MARK "B"
DRIP BAR

SECTION B

MARK "B"	QTY	ⓑ	ⓒ	PG/LN
x2k	1	4 1/4	2 1/4	2/Q ABUT 1
x2m	1	4	2	2/Q PIER
x2n	1	3	1	2/R ABUT 2



MARK "C"
DRIP BAR

SECTION D

MARK "C"	QTY	ⓓ	ⓔ	PG/LN
x2p	1	4 1/4	2 1/4	2/Q ABUT 1
x2t	1	4	2	2/Q PIER
x2v	1	3	1	2/R ABUT 2

NOTES:
ALL MATERIAL SHALL BE A709-50W.
ALL BOLT HOLES SHALL BE 5/16" Ø FOR 7/8" Ø HSB.
FOR GENERAL NOTES SEE DRAWING GNI.

REV.	DATE	REMARKS	DWN	CHK	APVL	SHOP
0						5-12-08
MATERIAL:		SURFACE PREP. & PAINT:		HOLES:		SHOP BOLTS:
A709-50W		AS NOTED ON GNI		15/16 Ø		NONE
DESCRIPTION: GIRDER STANDARD DETAILS						
CASCO BAY STEEL STRUCTURES, INC. 75 SPRING HILL ROAD SACO, MAINE 04072 PHONE (207) 282-7360 FAX. (207) 282-1179						
STRUCTURE: TH24 over Hoosic River BRIDGE NO. 41 POWNAL, VERMONT COUNTY OF BENNINGTON				DRAWN: JTB	DATE: 04/24	
				CHKD: TM	DATE: 05/05	
LOCATION: TOWN OF POWNAL			JOB NO. 367		DWG NO. X2	
PROJ NO. BRZ 1441 (19) C/2					REV. Δ	
CUSTOMER: VERMONT AGENCY OF TRANSPORTATION						

RECEIVED
OK'D BY WBL OK'D BY CWC
MAY 15 2008
RESUBMIT _____ APPROVED _____
BY _____ DATE _____