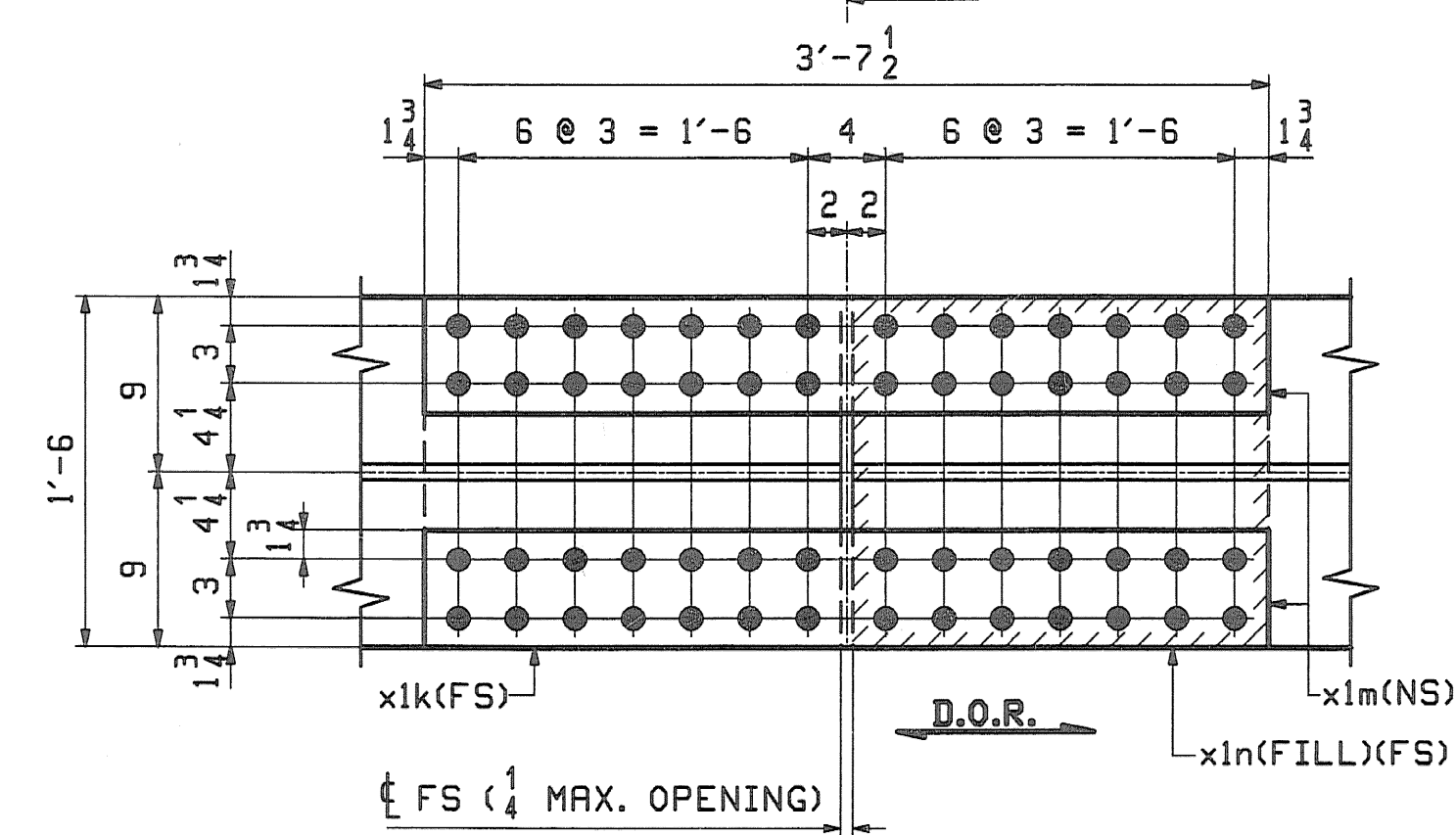
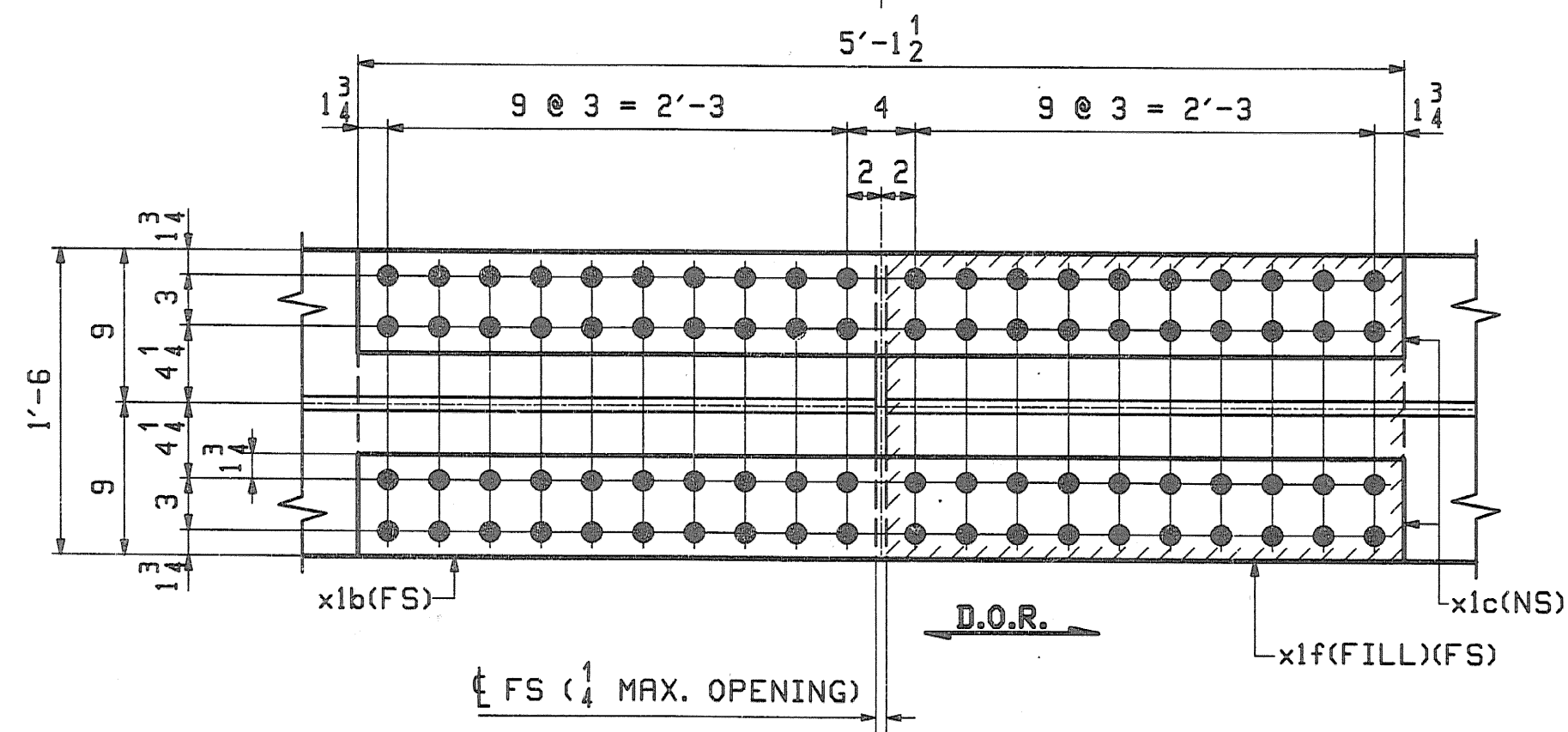
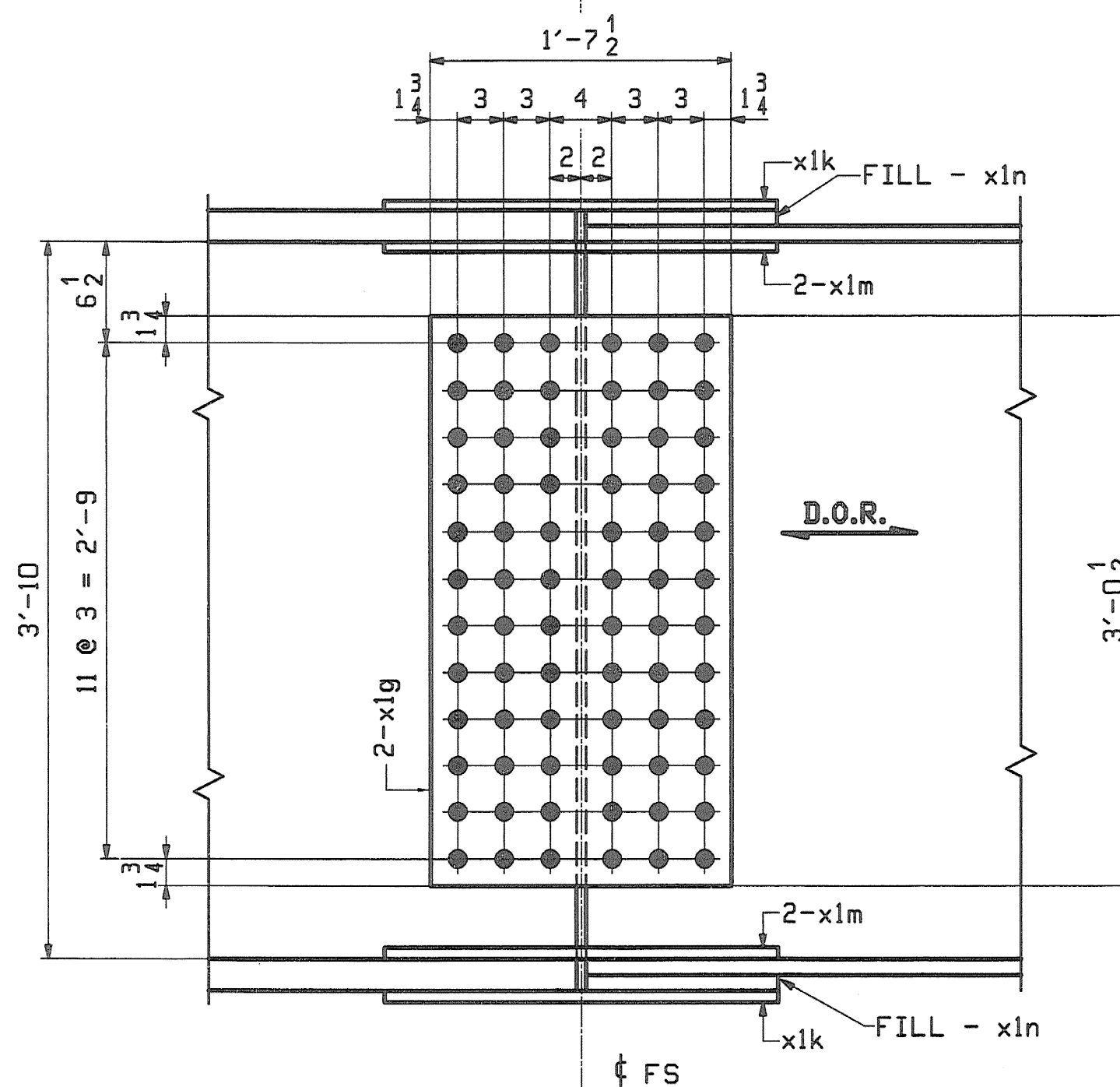
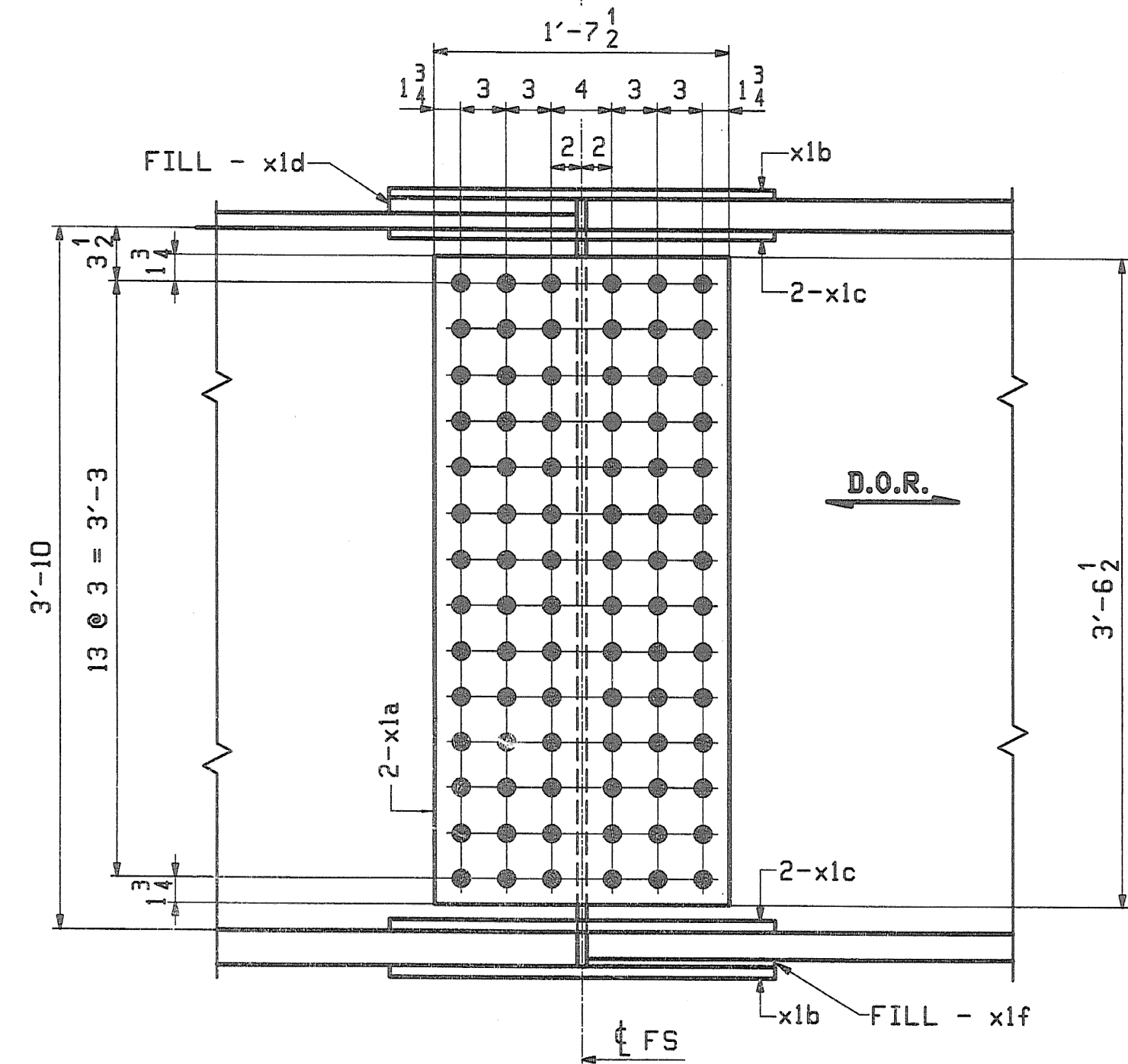
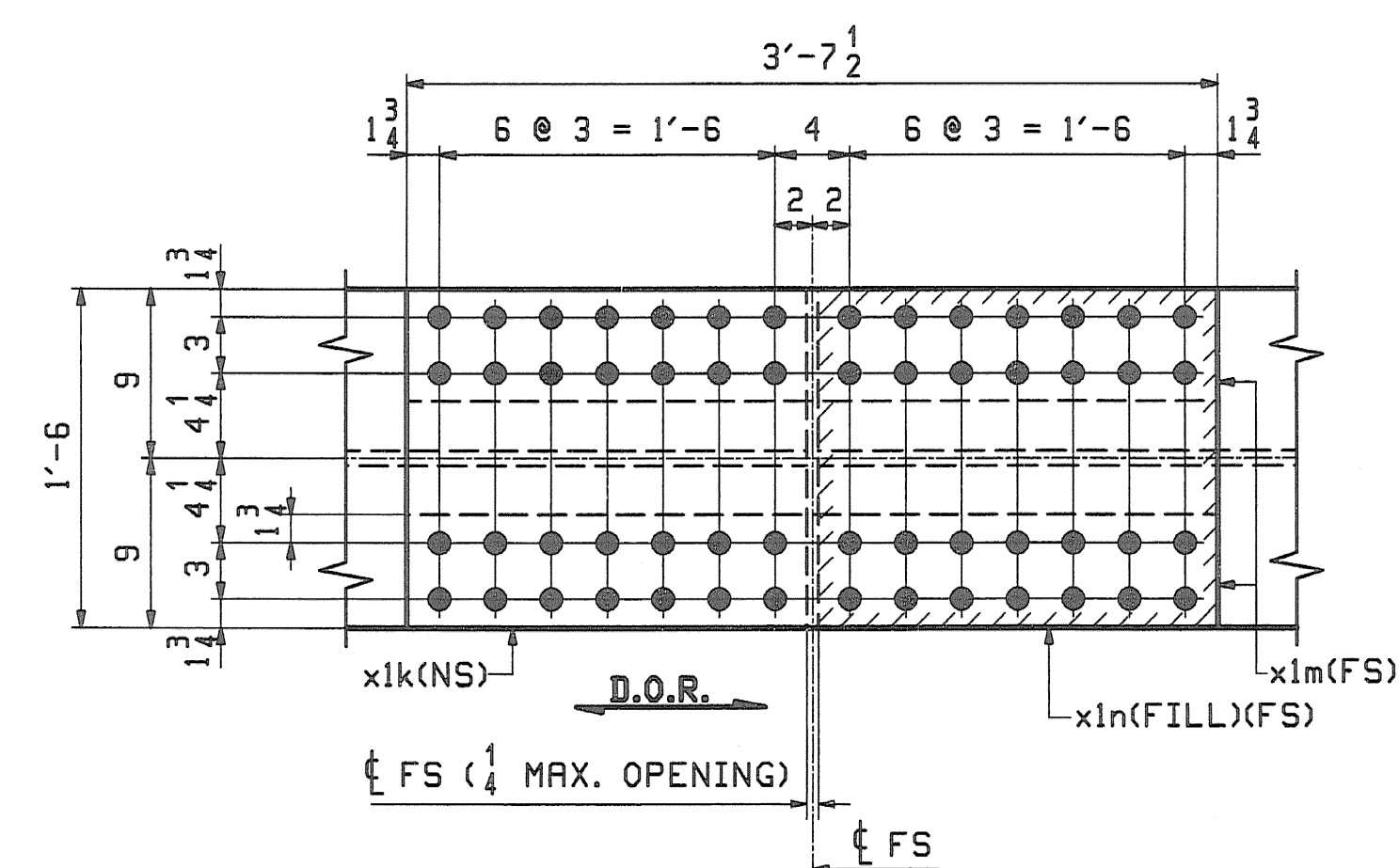
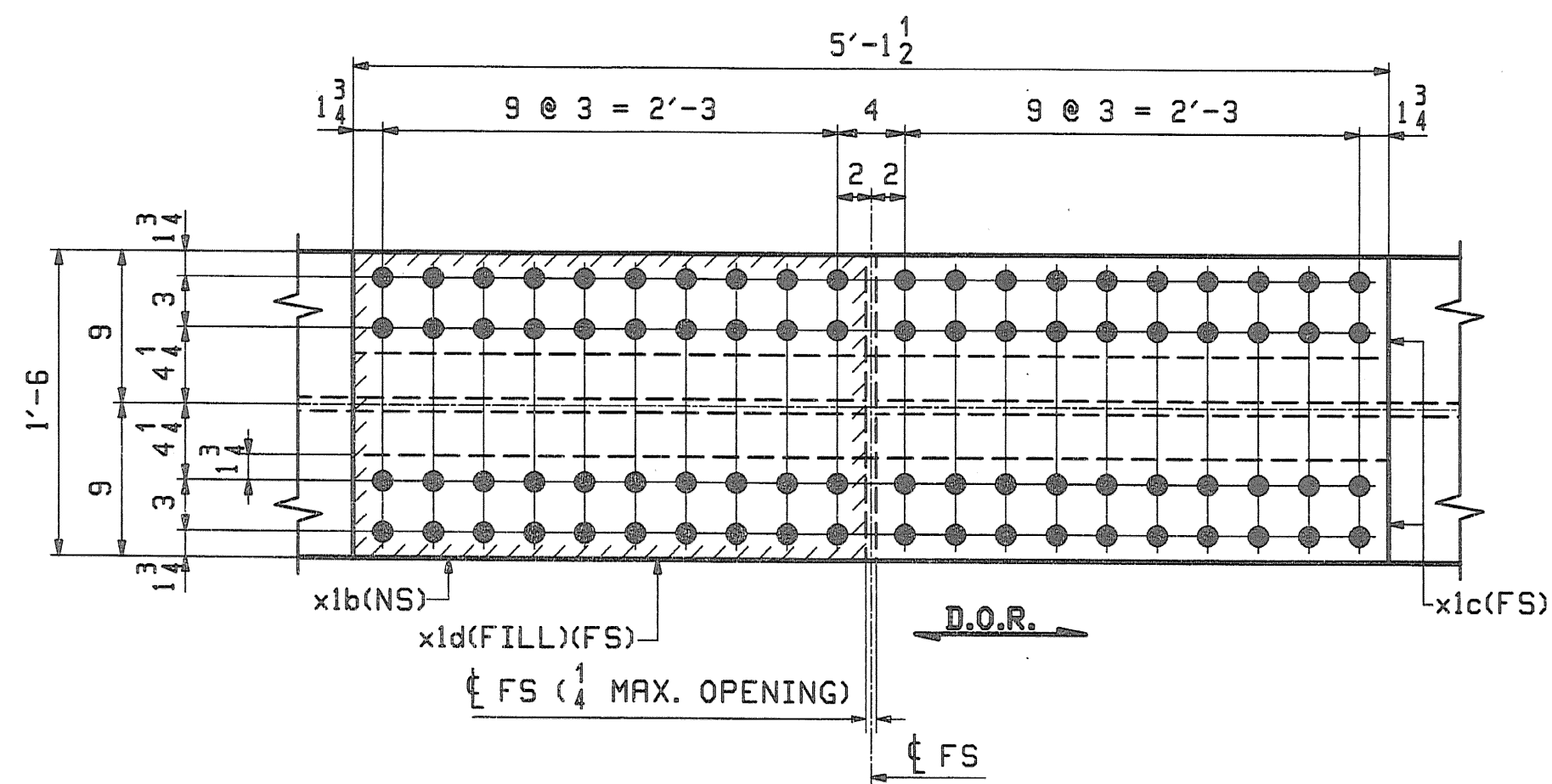


PAGE	LINE	MARK	QTY	MATERIAL	LENGTH		REMARKS	JOB NO.	DRAWING NO.	REV.
					FT	INCHES				
		X1M1	5	FIELD SPLICE						X1
2	B	10	x1a	PL 5/8 x 42 1/2	1	7 1/2	(A709-50WT2) (H2-3)			
2	D	10	x1b	PL 5/8 x 18	5	1 1/2	(A709-50WT2) (H2-3)			
2	E	20	x1c	PL 5/8 x 6 1/2	5	1 1/2	(A709-50WT2) (H2-3)			
2	H	5	x1d	PL 1x18	2	6 5/8	FILL			
2	J	5	x1f	PL 1/4 x 18	2	6 5/8	FILL			
		X1M2	5	FIELD SPLICE						951
2	C	10	x1g	PL 5/8 x 36 1/2	1	7 1/2	(A709-50WT2) (H2-3)			
2	F	10	x1k	PL 5/8 x 18	3	7 1/2	(A709-50WT2) (H2-3)			
2	G	20	x1m	PL 5/8 x 6 1/2	3	7 1/2	(A709-50WT2) (H2-3)			
2	K	10	x1n	PL 1x18	1	9 5/8	FILL			



5 ~ FIELD SPLICE DETAIL ~ X1M1
FIELD SPLICE 1

5 ~ FIELD SPLICE DETAIL ~ X1M2
FIELD SPLICE 2

- NOTES:
- FOR GENERAL NOTES SEE DRAWING GNI.
 - HOLES IN SPLICE PLATES ARE PRE-DRILLED. ENDS OF GIRDERS ARE DRILLED FROM SOLID USING SPLICE PLATES AS A TEMPLATE.
 - D.O.R.** DENOTES DIRECTION OF MILL ROLLING
 - H2-3 DENOTES CHARPY V-NOTCH TESTING REQUIRED.

0					5-12-08	
REV.	DATE	REMARKS	DWN	CHK	APVL	SHOP
MATERIAL:		SURFACE PREP. & PAINT:		HOLES:		SHOP BOLTS:
A709-50W		SEE DWG GNI		15 16" Ø		NONE
DESCRIPTION: FIELD SPLICE DETAILS						
CASCO BAY STEEL STRUCTURES, INC.						
75 SPRING HILL ROAD SACO, MAINE 04072						
PHONE (207) 282-7360 FAX. (207) 282-1179						
STRUCTURE: TH24 over Hoosic River					DATE:	
BRIDGE NO. 41					JTB	04/23
POWNAI, VERMONT					CHKD:	DATE:
COUNTY OF BENNINGTON					TM	05/05
LOCATION: TOWN OF POWNAI			JOB NO.	DWG NO.		
PROJ NO. BRZ 1441 (19) C/2			367	X1		
CUSTOMER: VERMONT AGENCY OF TRANSPORTATION				REV. Δ		

W. C. WBL. BY C.W.C.
MAY 15 2008
RESUBMIT APPROVED
BY DATE