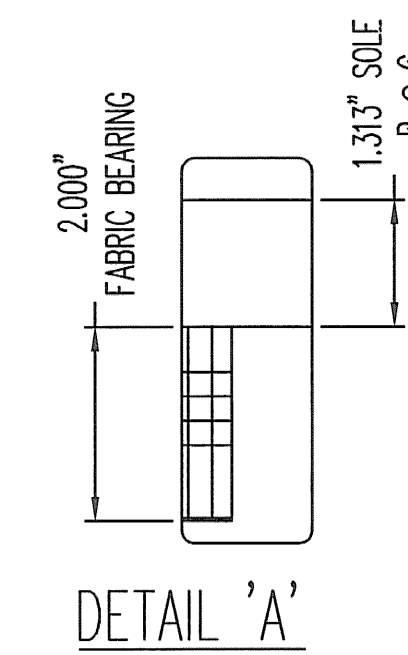
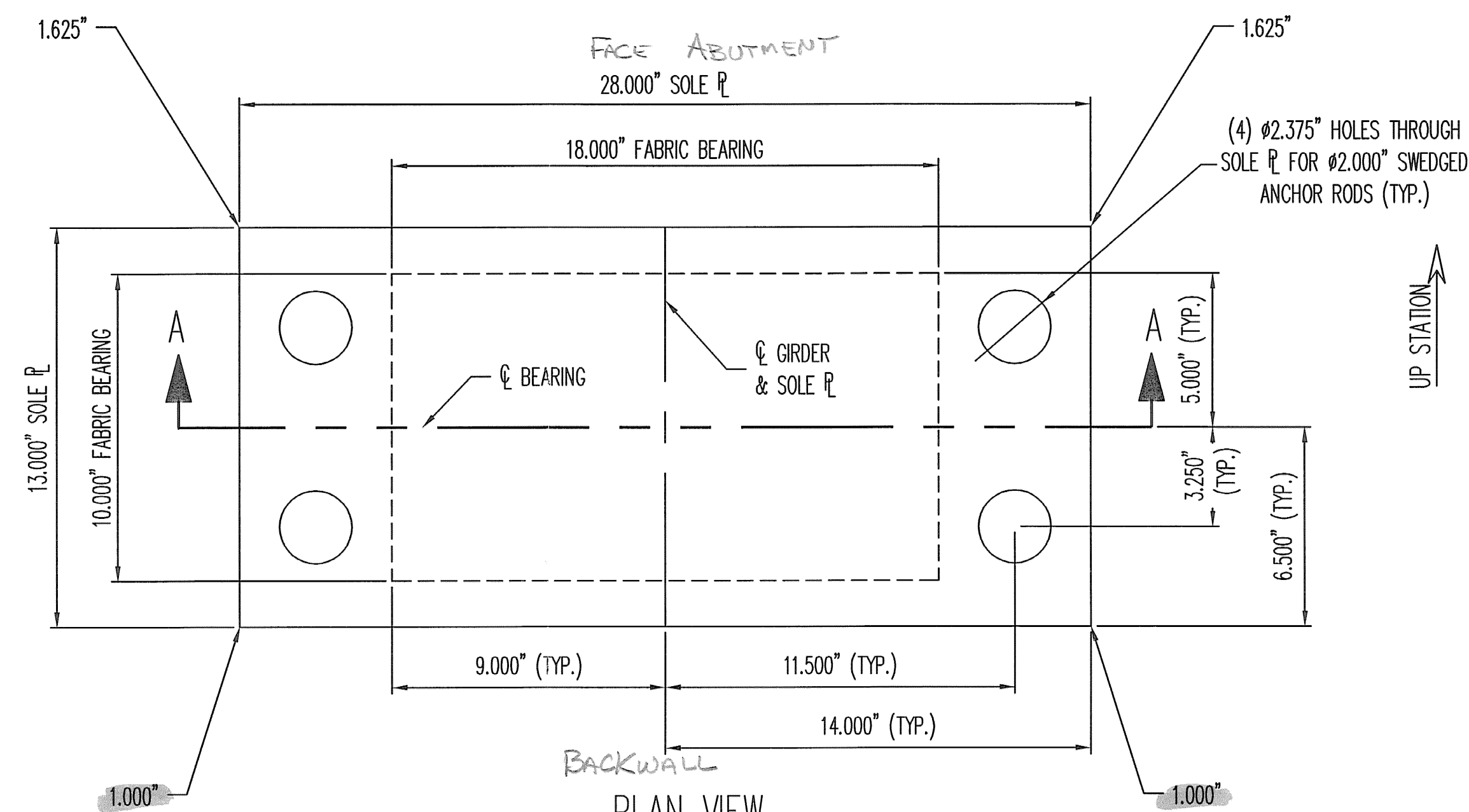


MK	QTY.	DESCRIPTION	MATERIAL	LENGTH	REMARKS	PART NO.
2A	5	FABRIC BEARING				
2a1	5	2.000" X 18.000"	VT 731.01	10.000"		
2sp1	5	1.625" X 28.000"	A709 GR 50 OR 50W	13.000"	A123-HDG	

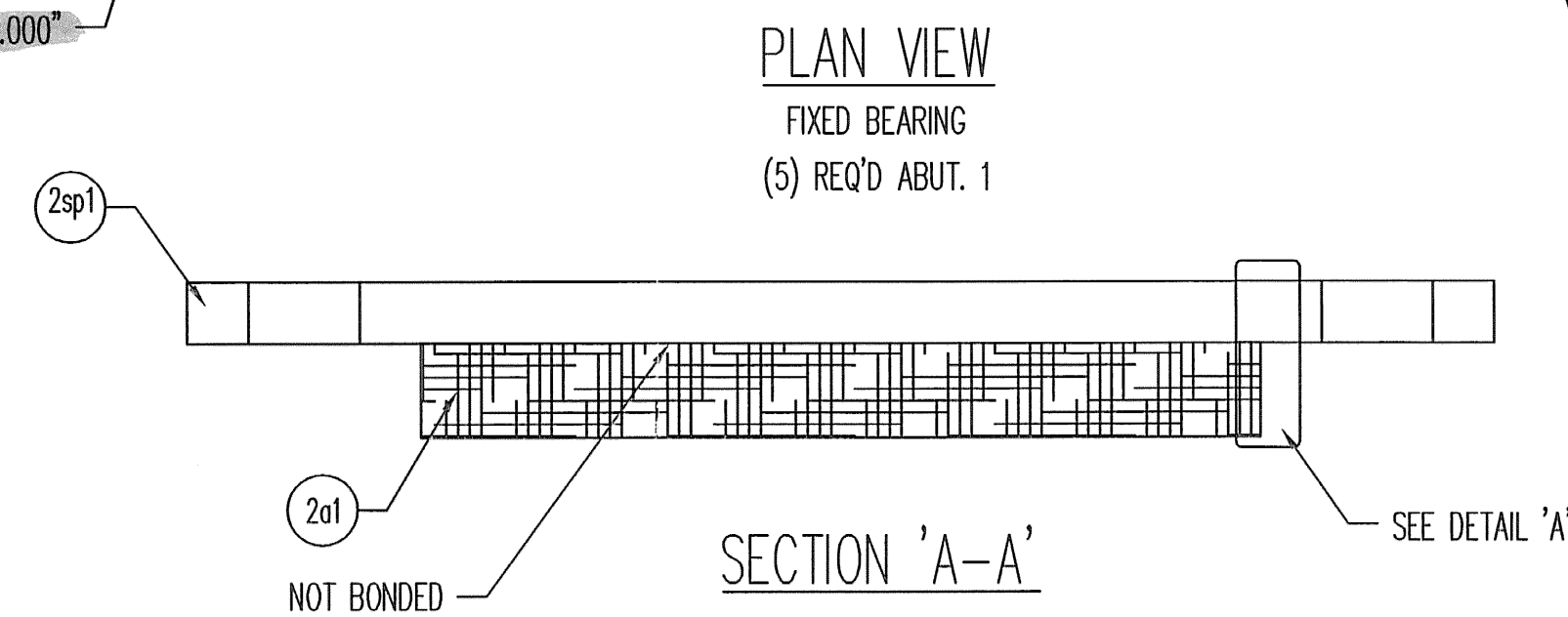
NOTE: ALL MATERIAL SPECIFICATION DESCRIPTIONS ARE ASTM, UNLESS OTHERWISE NOTED.



LOAD DATA	23215-1106-2
MAX VERTICAL DL	176.0 k
MAX HORIZONTAL DL	17.6 k

SEE SHEET G01 FOR GENERAL NOTES AND COATING LIMITS  
SEE SHEET 3 FOR ANCHOR ROD ASSEMBLY

RECEIVED  
CK'D BY *WPC* OK'D BY *CWC*  
MAY 30 2008  
RESUBMIT \_\_\_\_\_ APPROVED \_\_\_\_\_  
BY *FRW* DATE *6-9-08*



REV.	DESCRIPTION	DATE	DET.	CKD.
	LOCATION — TH 24 OVER HOOSIC RIVER		ITEM	QUANTITY
	BRIDGE — 41		23125-1106-1	5 OF 5
	PROJECT — BRZ 1441(19) C/2		—	—
	—		—	—
	P.O. NO. — 84934		—	—
	DESIGNER — VIDOT		—	—
	CUSTOMER — FRANK W WHITCOMB CONSTRUCTION		—	—
			DATE	—
			5/08	—
			RELEASE	1
			SHEET	2

**D.S. BROWN**

THE D.S. BROWN COMPANY  
300 E. CHERRY STREET  
NORTH BALTIMORE, OHIO 45872  
419.257.3561  
FAX: 419.257.0332  
WWW.DSBROWN.COM

DESCRIPTION	SCALE	DRAWN BY	CHECKED BY	DATE
VERSIFLEX PREFORMED FABRIC BEARING BENNINGTON CO., VT	N.T.S.	SP	NRH	5/08
	PROJECT NUMBER	PRODUCT CODE	RELEASE	SHEET
	23215	1106	1	2