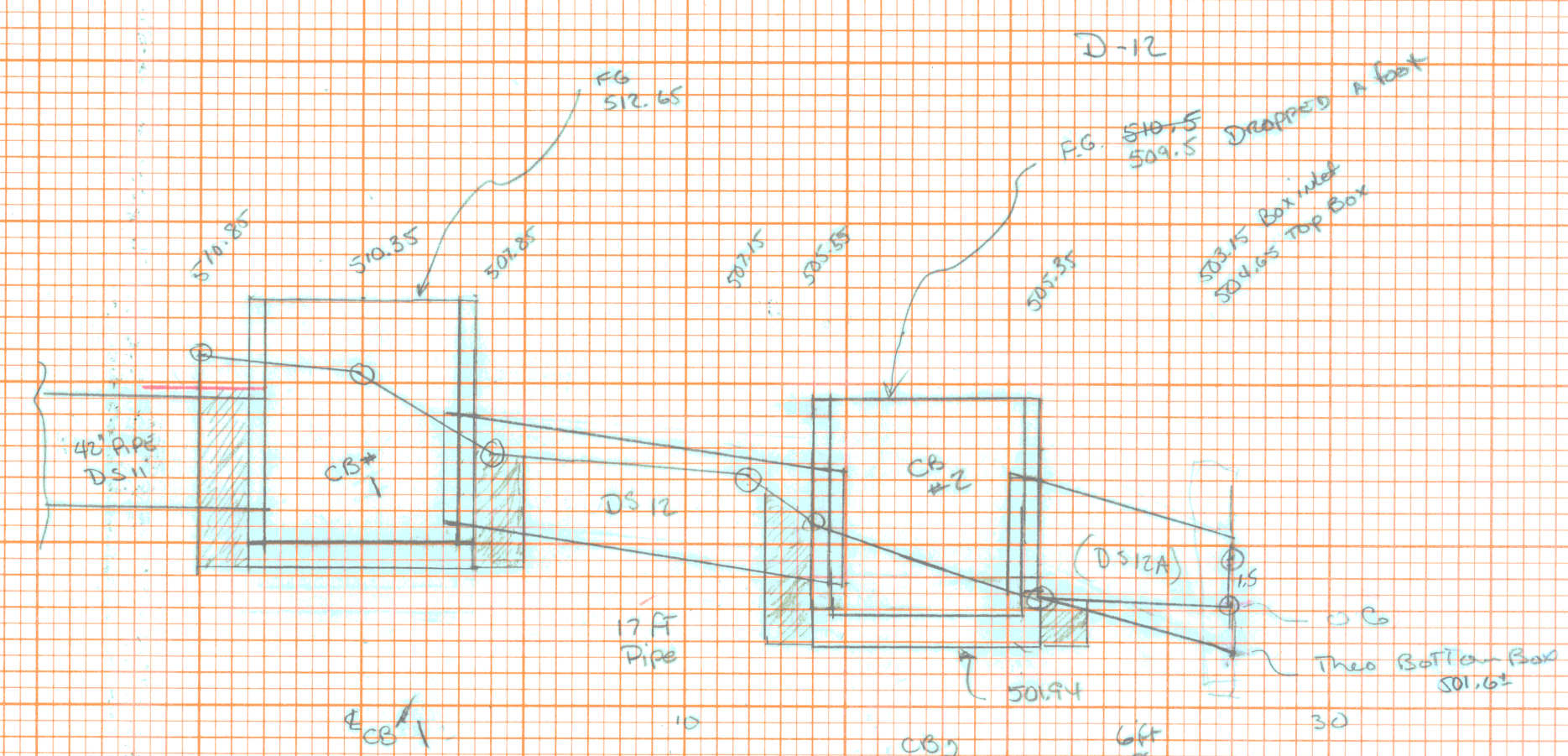
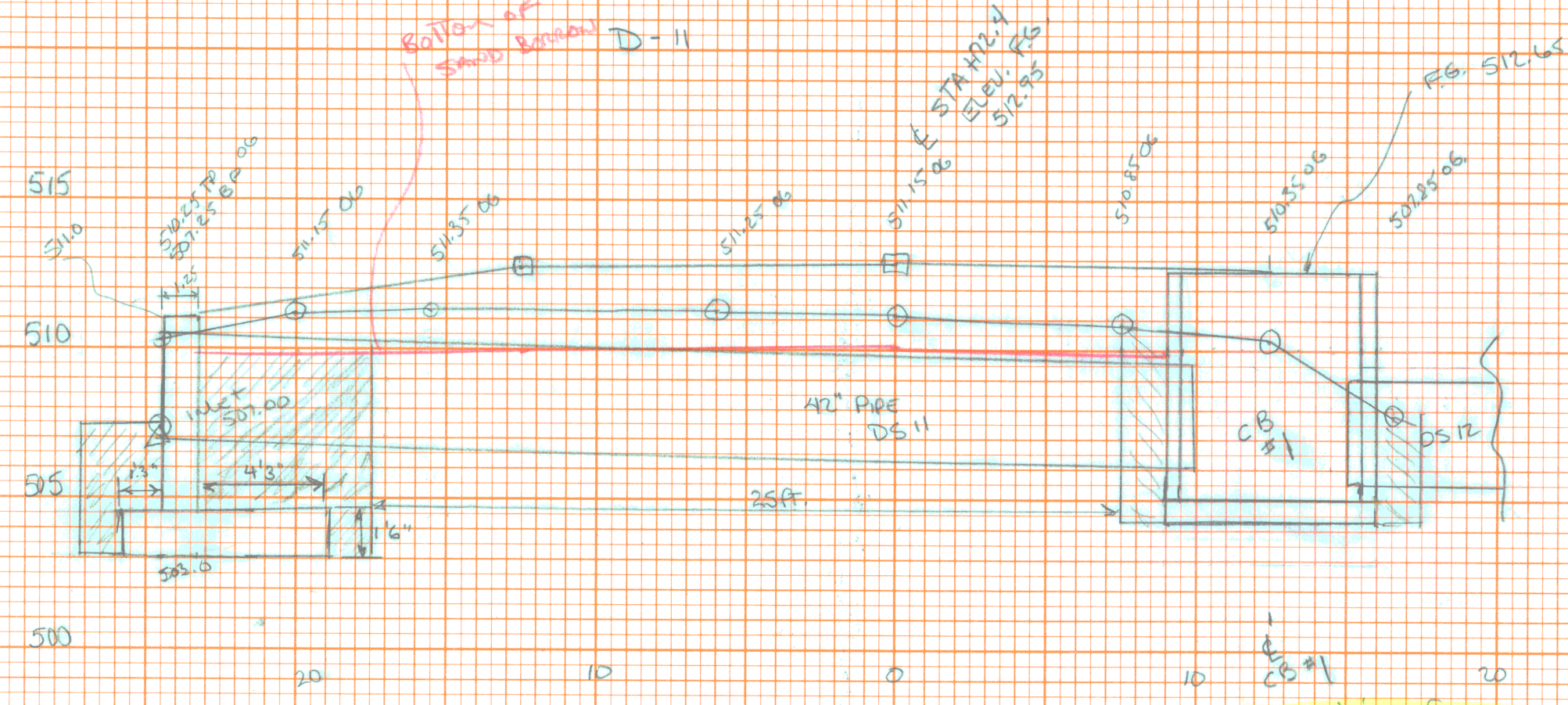


NO. 01
 HOLE BOOK
 SHEET 21/24
 ORIGINAL
 DATE

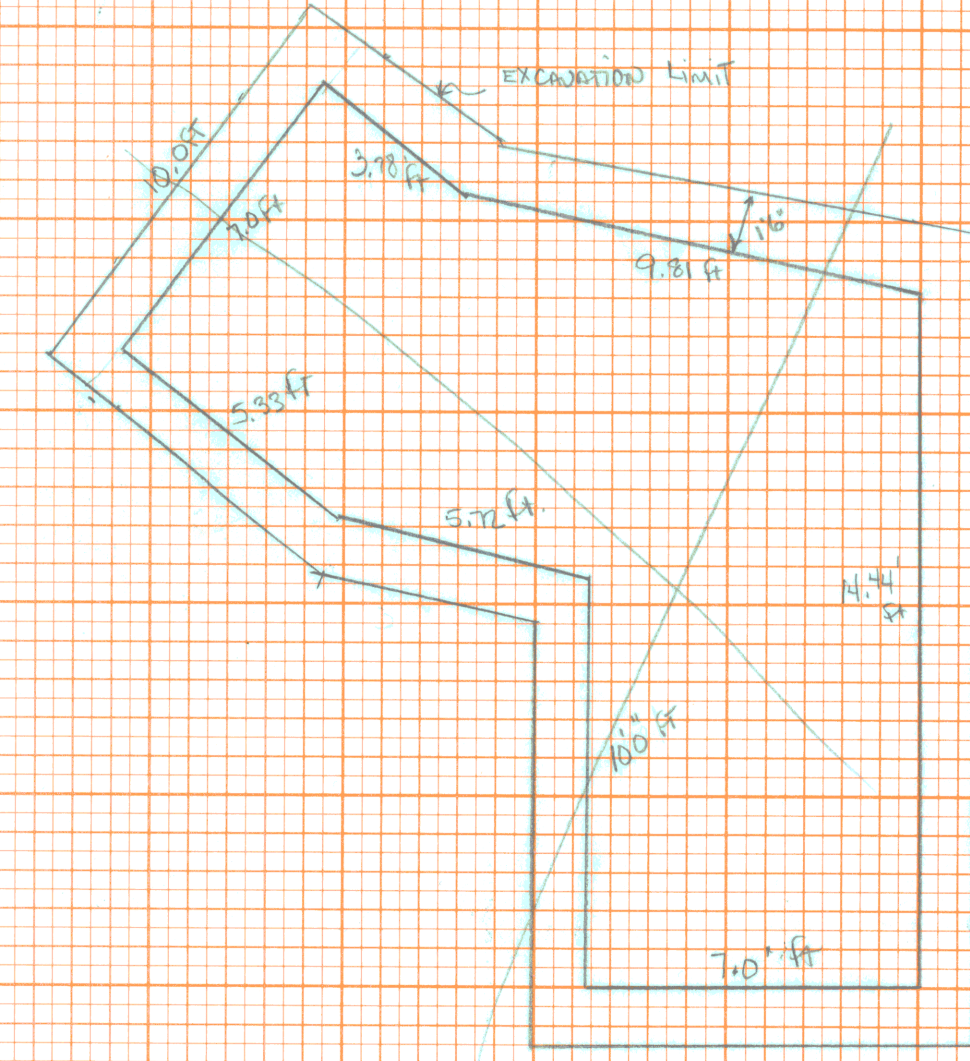
NO. 02
 HOLE BOOK
 SHEET 22/24
 ORIGINAL
 DATE



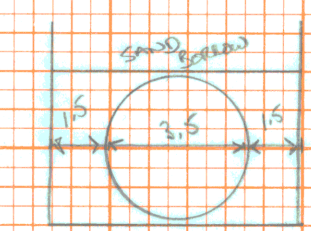
515
 510
 505
 500

Plotted By: K.A. 8/1/08

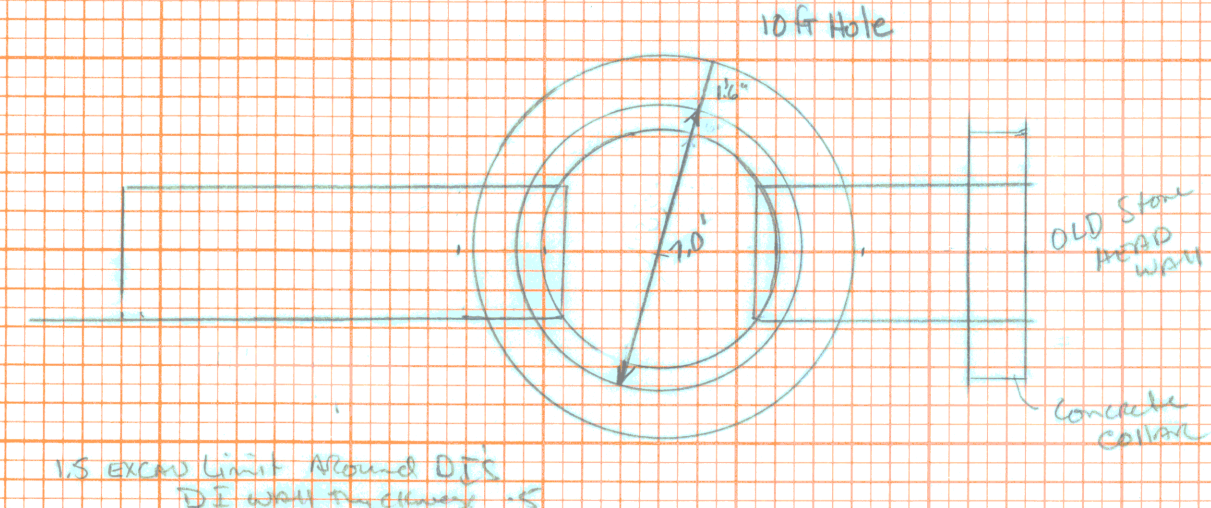
Quantities for
 CB Calculated for
 DS-11



DS-11
 Pipe Excavation Trench Earth Item 204.20
 $3.5 \text{ Deep} \times 6.5 \text{ width} \times 25 \text{ ft Long} = 558.75 \text{ cu ft}$
 Trench Excavation for stone wall
 with 18" DS-11 by 250 sections



Structural Backfill for Structures
 Item 204.30
 $3.5 \text{ Deep} \times 6.5 \text{ width} \times 25 \text{ Long} = 558.75 \text{ cu ft}$
 $\frac{558.75}{2.7} = 207 \text{ cu ft}$
 207 cu ft @ 1/1/09



CB #2

Item 204.20
 Trench Excavation for CB #2 Item 204.20
 $1.5 \text{ Deep} \times 10 \text{ width} \times 25 \text{ Long} = 375 \text{ cu ft}$
 $\frac{375}{2.7} = 139 \text{ cu ft}$
 139 cu ft @ 1/1/09

DS-12

Pipe Excavation Trench Earth Item 204.20
 17 ft Pipe = 1.5 (2) + 0.5 wall (2) = 4 ft Long
 $4 \text{ ft Long} \times 3.0 \text{ ft height} \times 6.5 \text{ ft width} = 78 \text{ cu ft}$
 $\frac{78}{2.7} = 29 \text{ cu ft}$
 29 cu ft @ 1/1/09

Granular Backfill for Structures CB #2 Item 204.30
 $5095 - 5019 = 7.56 \text{ ft CB height}$
 $\pi (5)^2 \times 7.56 \text{ height} = 593.46 \text{ cu ft}$
 $\frac{593.46}{2.7} = 219.8 \text{ cu ft}$
 $219.8 \text{ cu ft} - 16.99 \text{ cu ft} = 202.81 \text{ cu ft}$
 202.81 cu ft @ 1/1/09