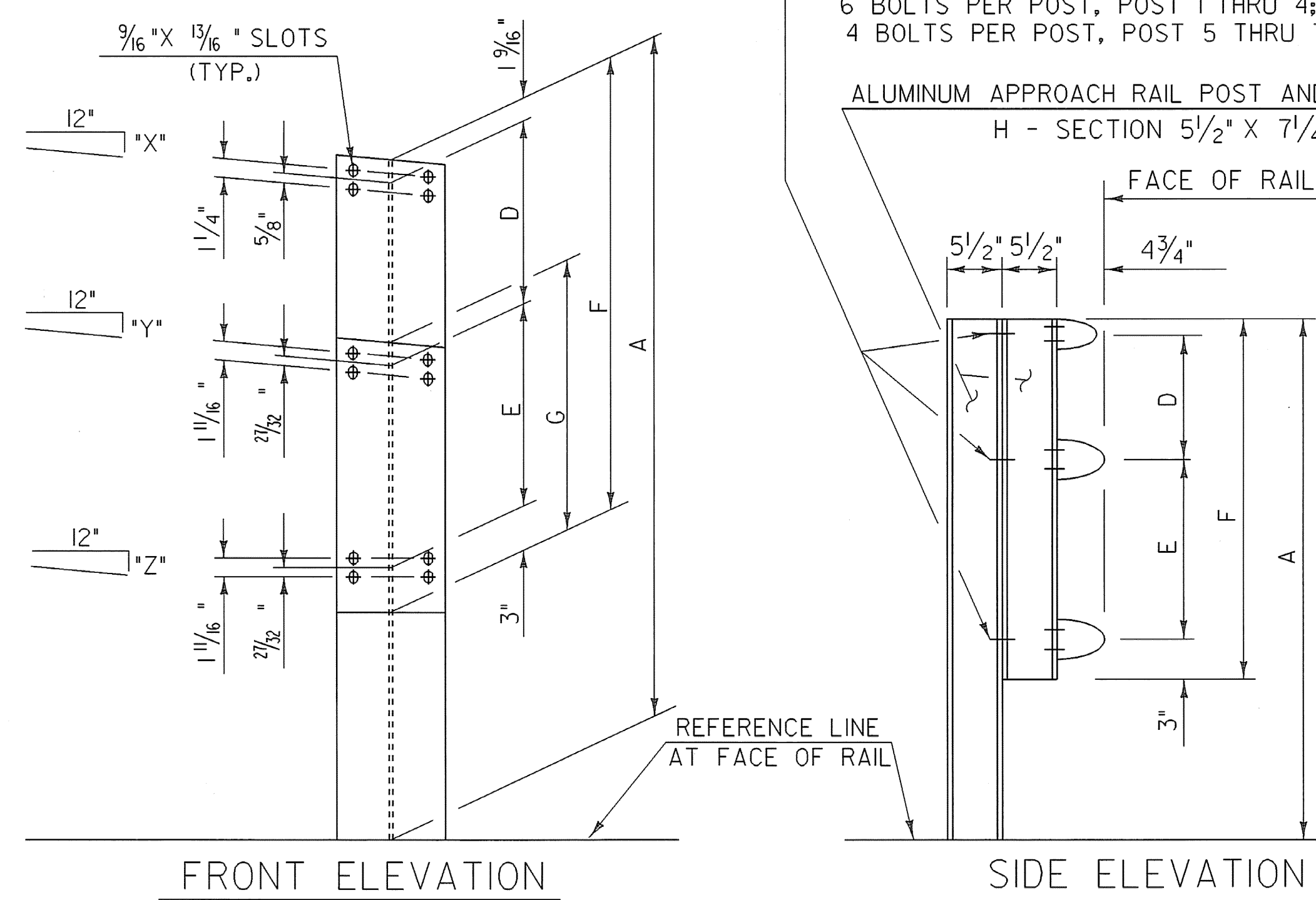


	SIDEWALK SIDE	CURB SIDE
"X"	5/8"	1/16"
"Y"	1/8"	1/2"
"Z"	1/8"	5/16"

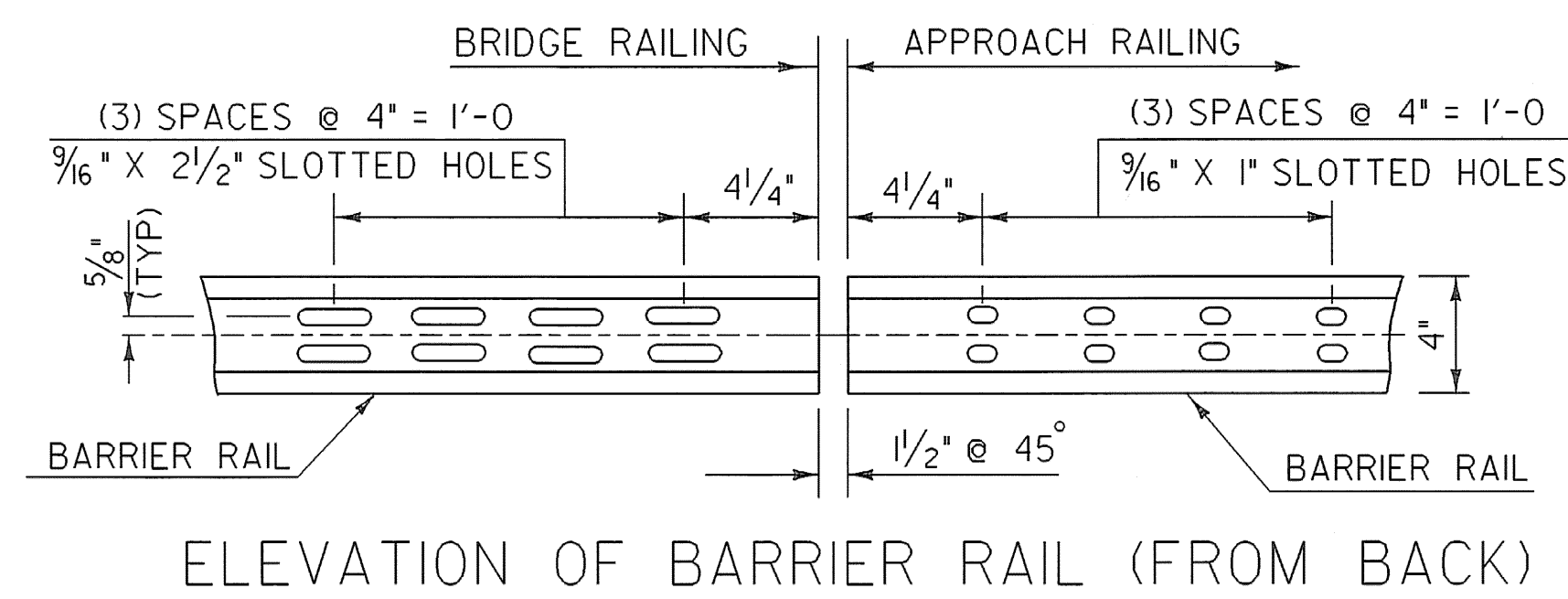
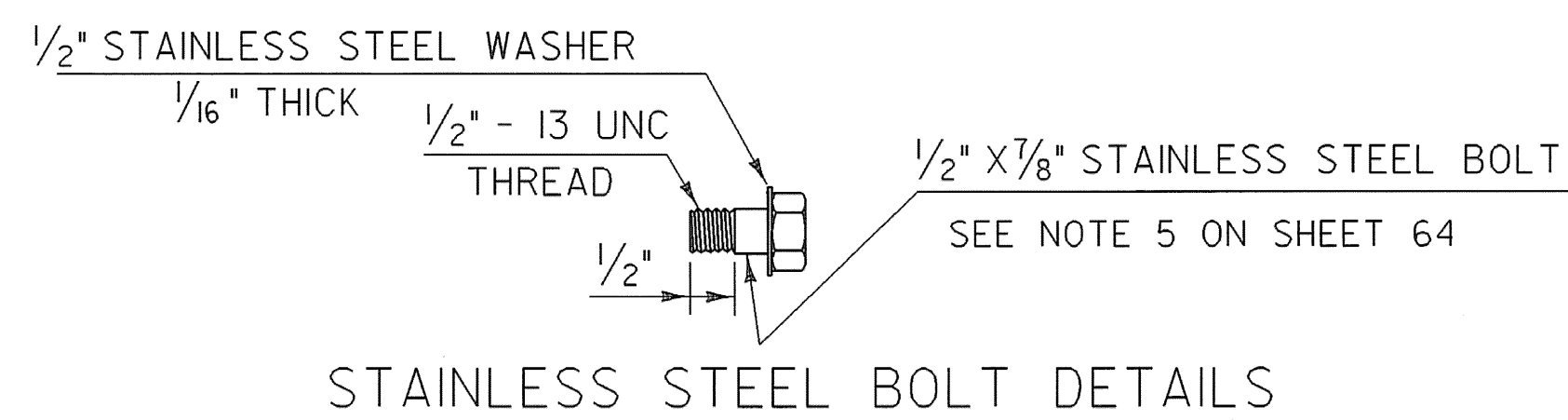
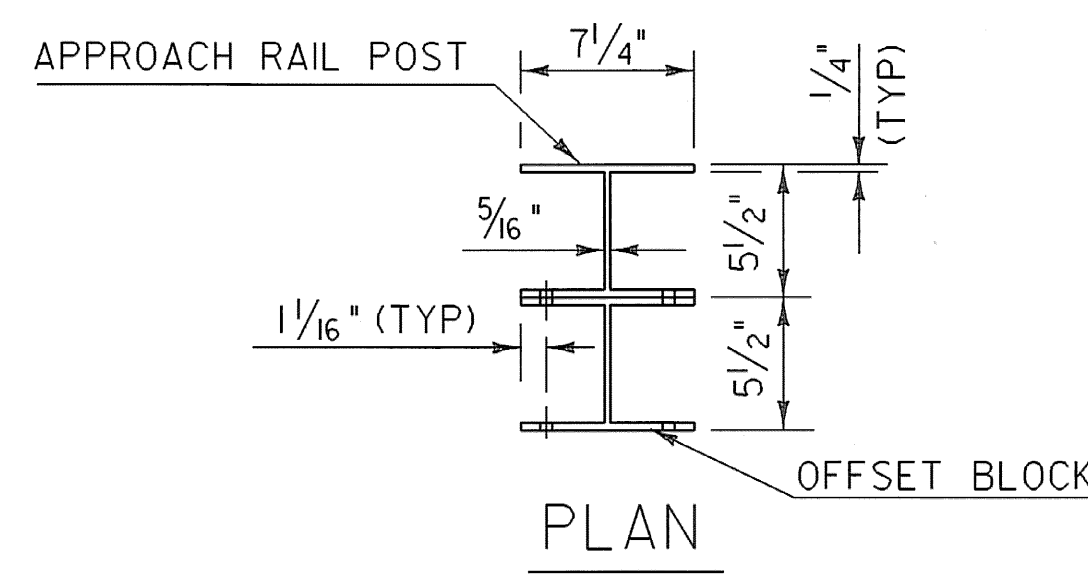


FRONT ELEVATION
SIDE ELEVATION
APPROACH RAIL DETAILS

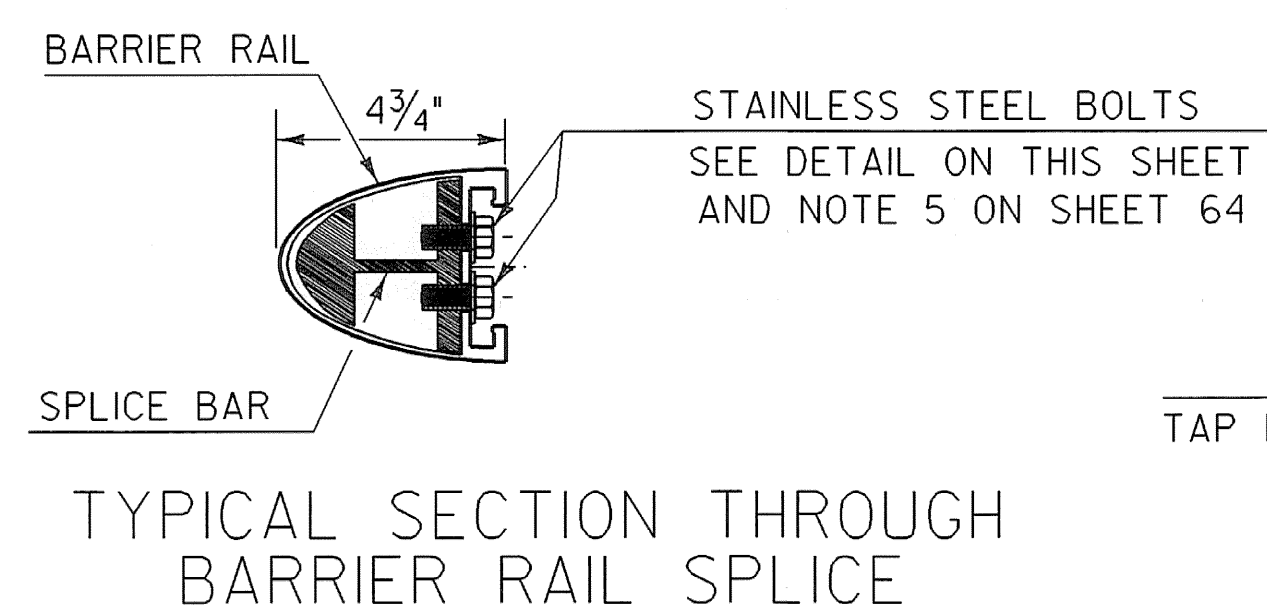
	WW1	WW2	WW3	WW4
"X"	11/16"	11/16"	15/16"	11/16"
"Y"	1/8"	1/8"	1/2"	1/8"
"Z"	1/8"	1/8"	5/16"	1/8"

ATTACH OFFSET BLOCK TO POST WITH
1/2" - 13 UNC X 1 1/2" LONG STAINLESS STEEL
HEX HEAD BOLTS, NUTS AND WASHERS.
6 BOLTS PER POST, POST 1 THRU 4;
4 BOLTS PER POST, POST 5 THRU 7.

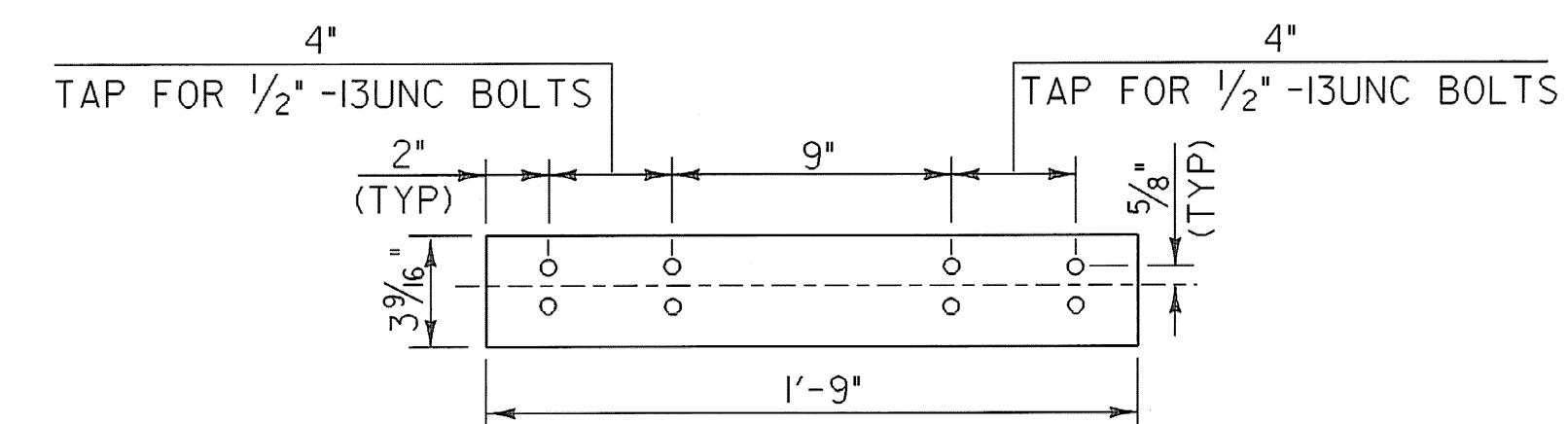
ALUMINUM APPROACH RAIL POST AND OFFSET BLOCK
H - SECTION 5 1/2" X 7 1/4"



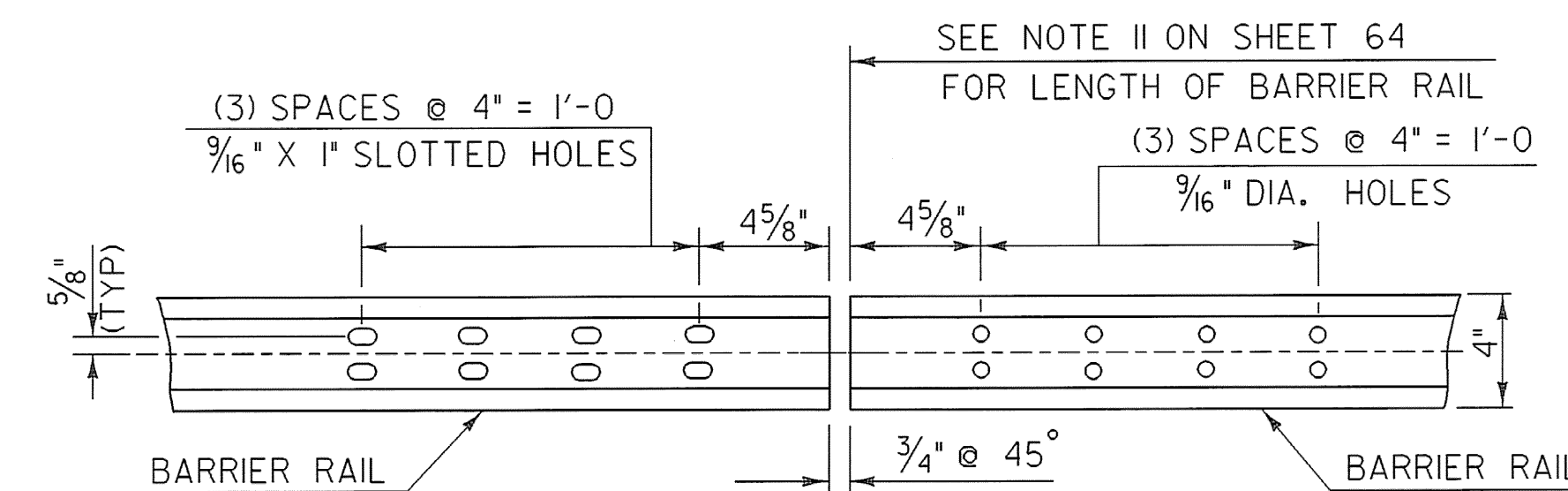
ELEVATION OF BARRIER RAIL (FROM BACK)



TYPICAL SECTION THROUGH
BARRIER RAIL SPLICE



ELEVATION OF BARRIER RAIL SPLICE BAR
TO BE USED AT TRANSITION BETWEEN
APPROACH RAIL & GUARD RAIL (FROM BACK)



ELEVATION OF BARRIER RAIL (FROM BACK)
AT ALL INTERMEDIATE RAIL SPLICES

APPROACH RAILING NOTES

1. ALL APPROACH RAILING POSTS SHALL BE EXTRUDED ALUMINUM.
2. ANY STRUCTURAL STEEL SHALL BE GRADE 36 GALVANIZED AFTER FABRICATION.
3. ALL ITEMS NOT OTHERWISE INDICATED SHALL MEET THE SPECIFICATION REQUIREMENTS OF THE STANDARD SHEETS ON WHICH THEY ARE DETAILED.
4. DETAILS ARE SHOWN FOR TRANSITION TO A 3 RAIL ALUMINUM BRIDGE RAILING.
5. DIMENSIONS SHOWN ARE FROM A REFERENCE LINE AT THE FACE OF POST FOR A NORMAL CROWNED SECTION. APPROPRIATE CORRECTIONS SHALL BE MADE FOR CROSS SLOPES OTHER THAN A NORMAL SECTION.
6. THE APPROACH RAILING SYSTEM AND RELATED HARDWARE SHALL BE ANODIZED TO A BLACK SATIN FINISH. (SEE SPECIAL PROVISIONS.)

ALUMINUM RAILING DETAILS
(SHEET 7)

PROJECT NAME:	POWNAL	PLOT DATE:	08-FEB-2008
PROJECT NUMBER:	BRZ 1441(19) C/2	DRAWN BY:	STR3
FILE NAME:	/87e045/str/se045rail.dgn	CHECKED BY:	C. CARLSON
PROJECT LEADER:	R. WHITCOMB	SHEET	65 OF 108
DESIGNED BY:	C. CARLSON		