

DELINEATOR NOTES

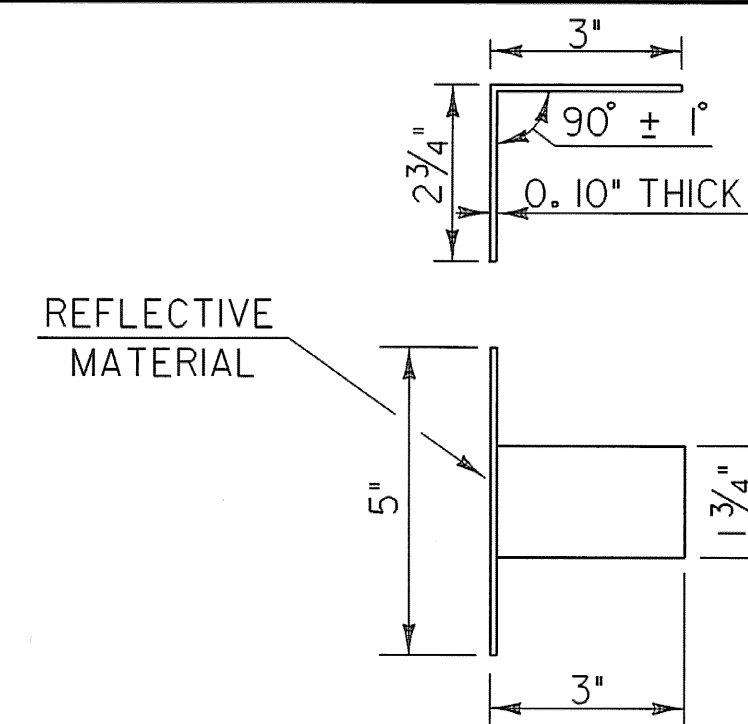
THIS REFLECTORIZED ALUMINUM DELINEATOR IS TO BE ERECTED EVERY 30 FEET (OR CLOSEST POST) WITH 2 NO. 8 X 3/4" SELF-TAPPING SCREWS.

DELINEATORS SHALL MEET SPECIFICATION REQUIREMENTS OF SUBSECTION 751.04.

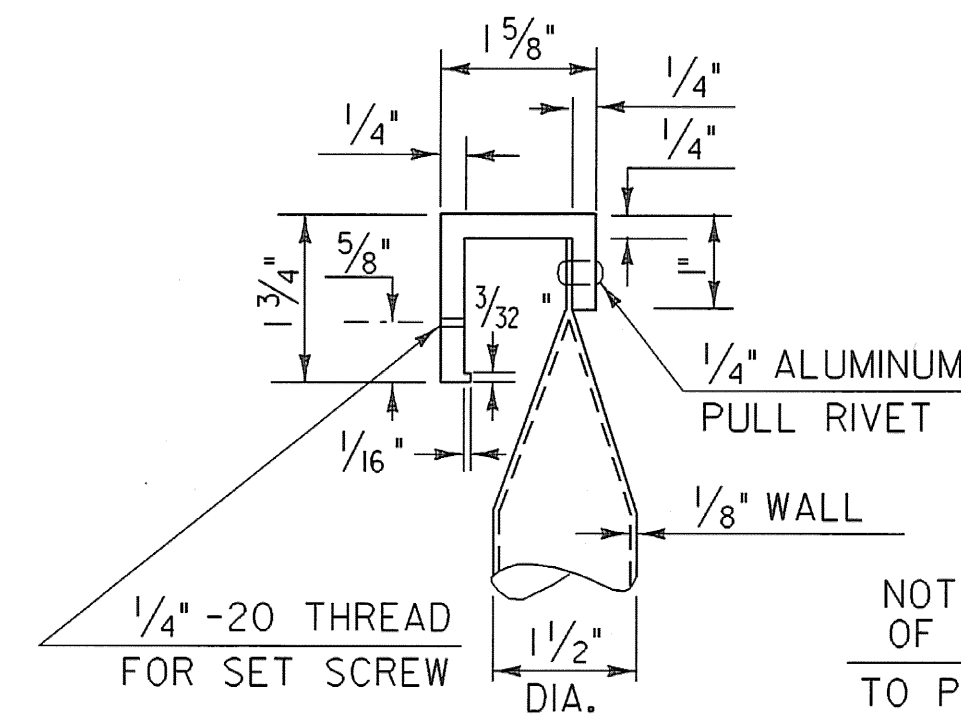
REFLECTIVE MATERIAL SHALL MEET THE REQUIREMENTS OF SUBSECTION 750.08 AND SHALL BE OF ENCAPSULATED LENS SILVER OR AMBER. AMBER IS TO BE INSTALLED ON THE DRIVER'S LEFT AND SILVER ON THEIR RIGHT.

ON BRIDGES WITH A SIDEWALK, DELINEATORS ARE NOT TO BE INSTALLED ON THE SIDEWALK SIDE OF THE BRIDGE (I.E. DELINEATORS INSTALLED ONLY ON THE CURB SIDE AND ON THE APPROACH RAIL ON THE CURB SIDE)

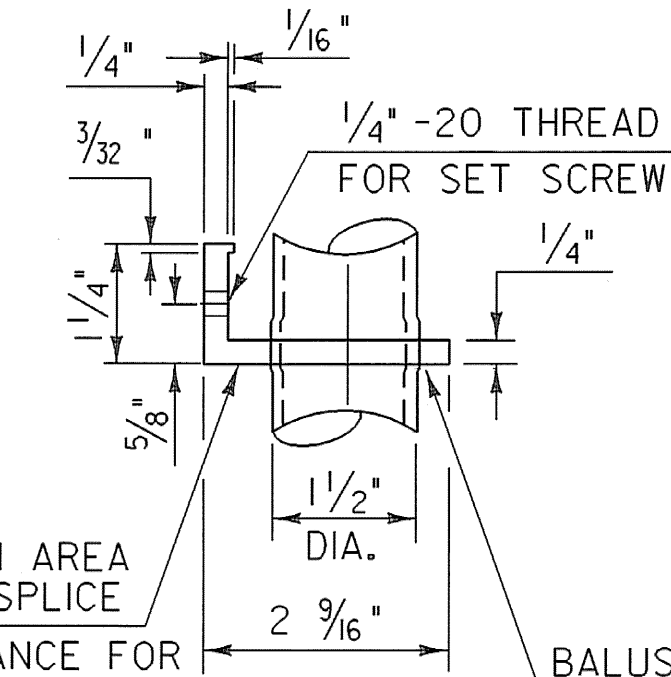
PAYMENT SHALL BE INCIDENTAL TO ALL OTHER BRIDGE RAILING ITEMS.



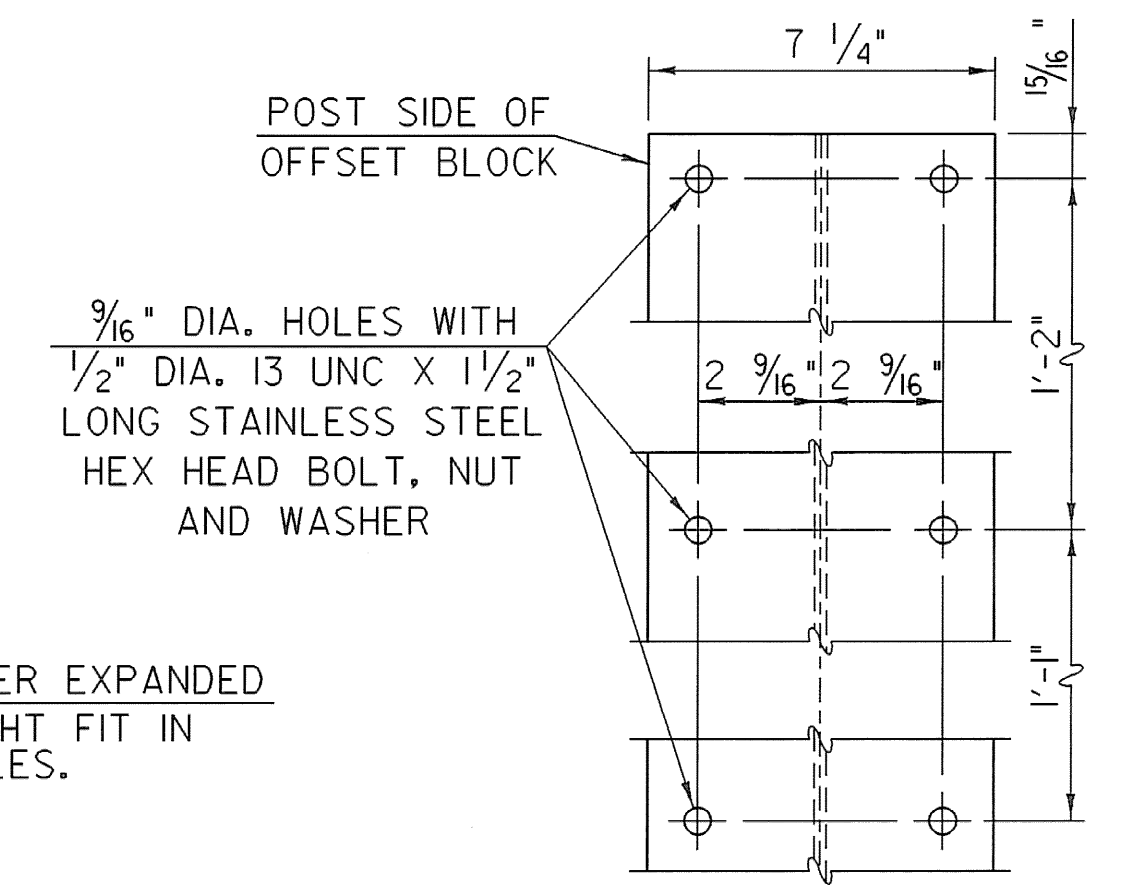
REFLECTOR DETAILS



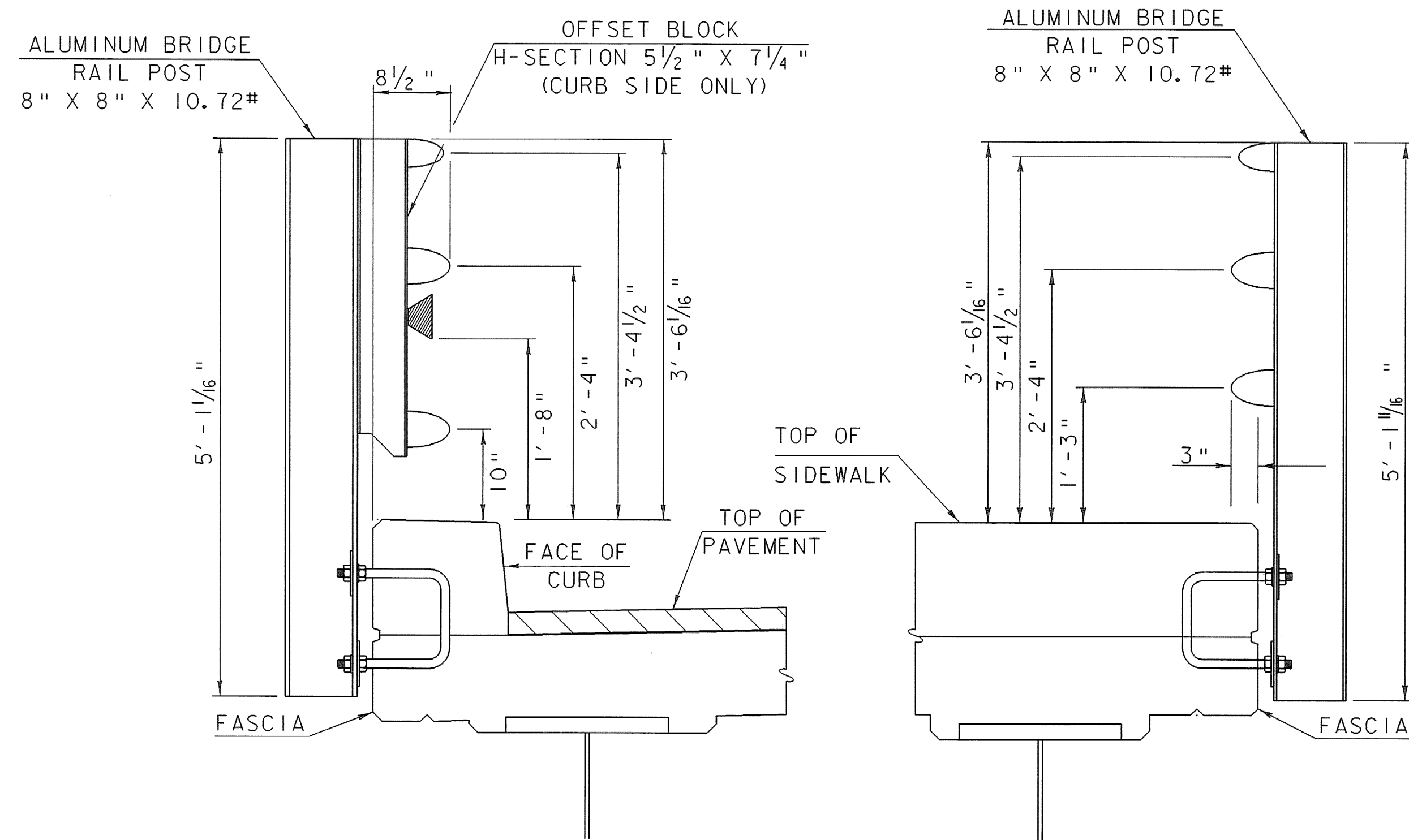
DETAIL A



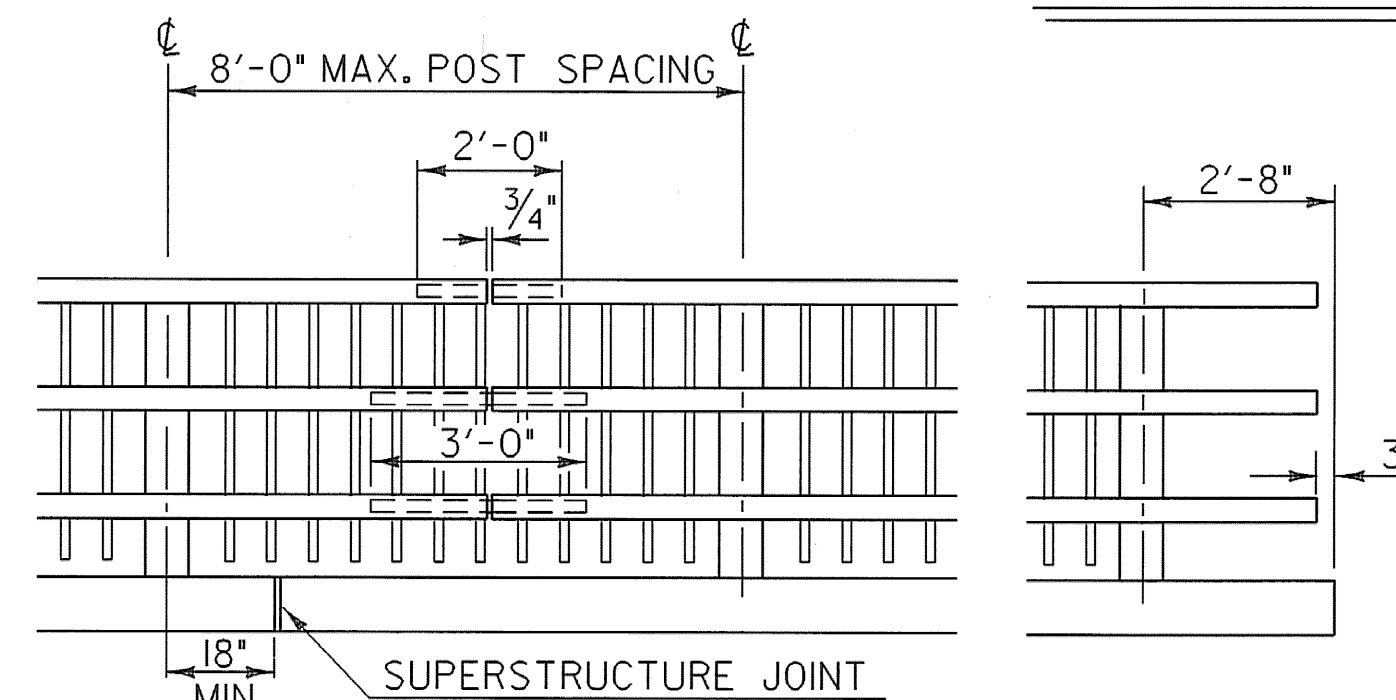
DETAIL B



OFFSET BLOCK CONNECTION

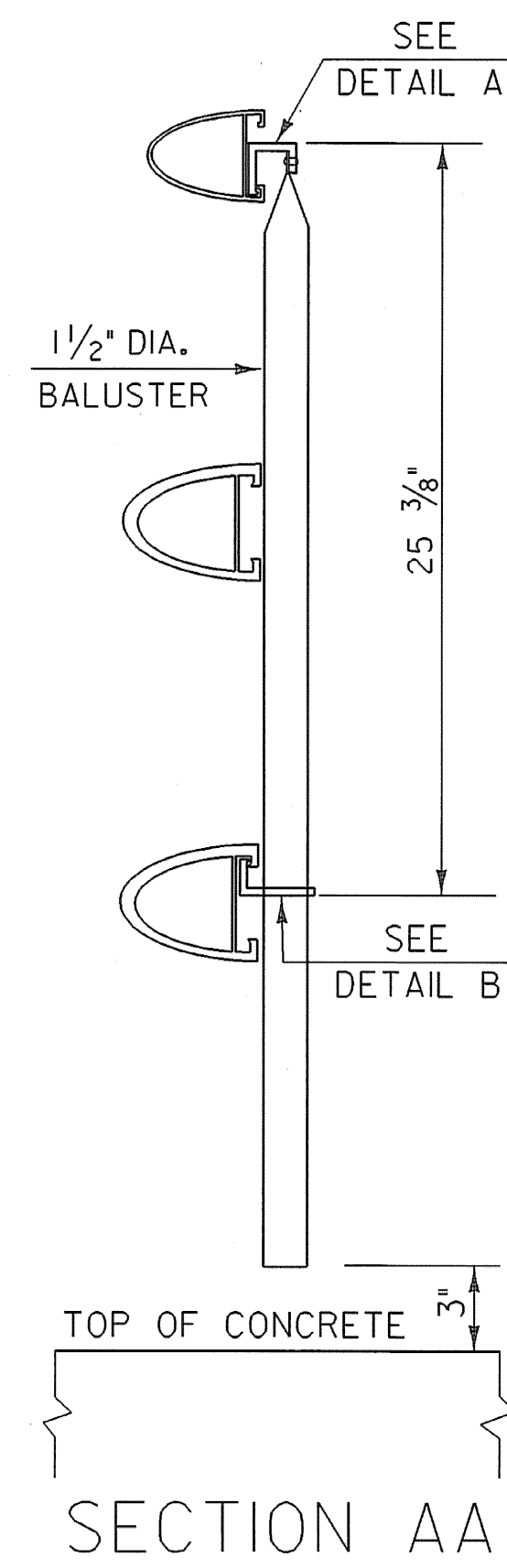


RAIL POST DETAILS ON SUPERSTRUCTURE

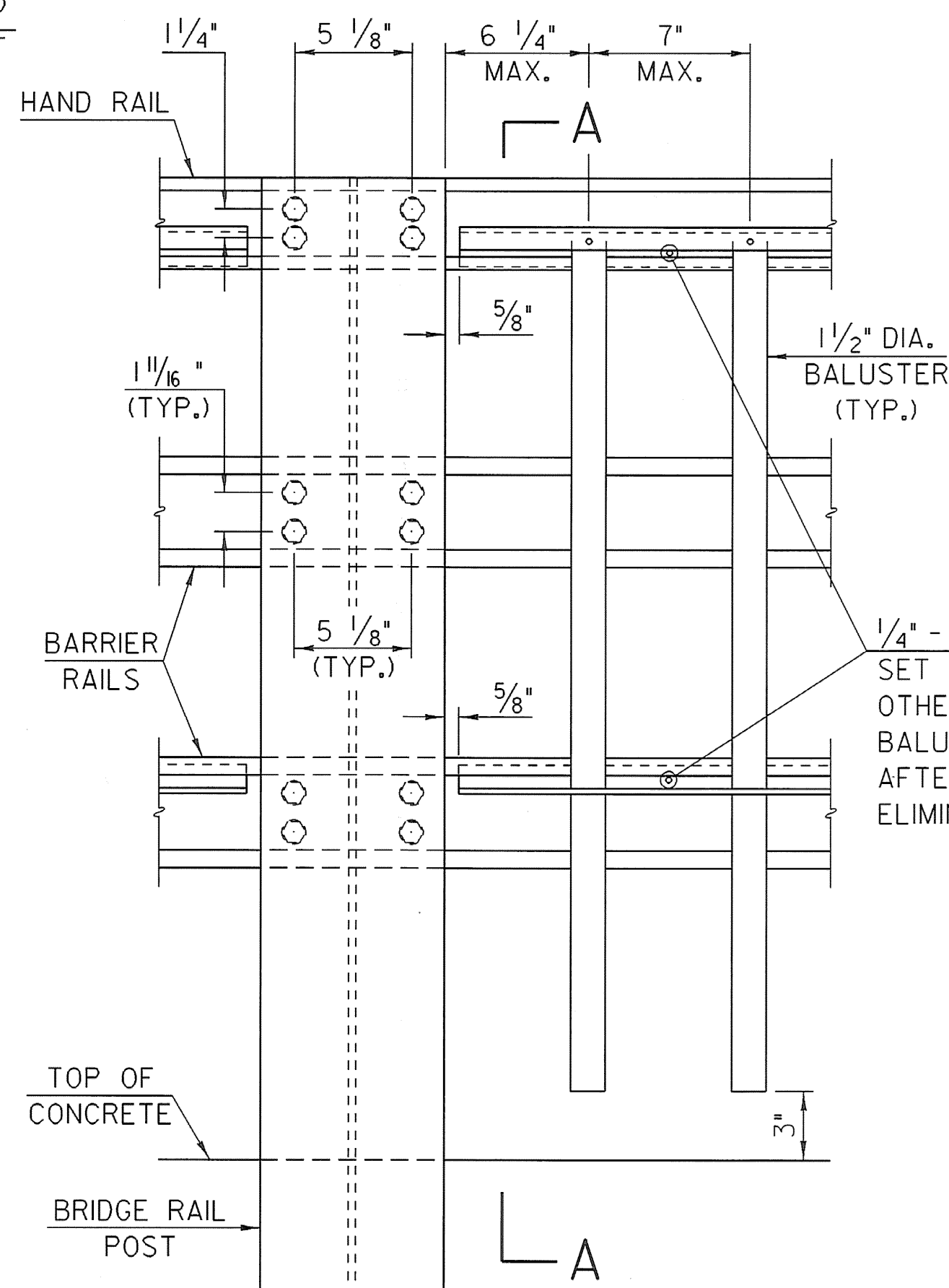


FRONT ELEVATION OF THREE RAIL WITH SPINDLES

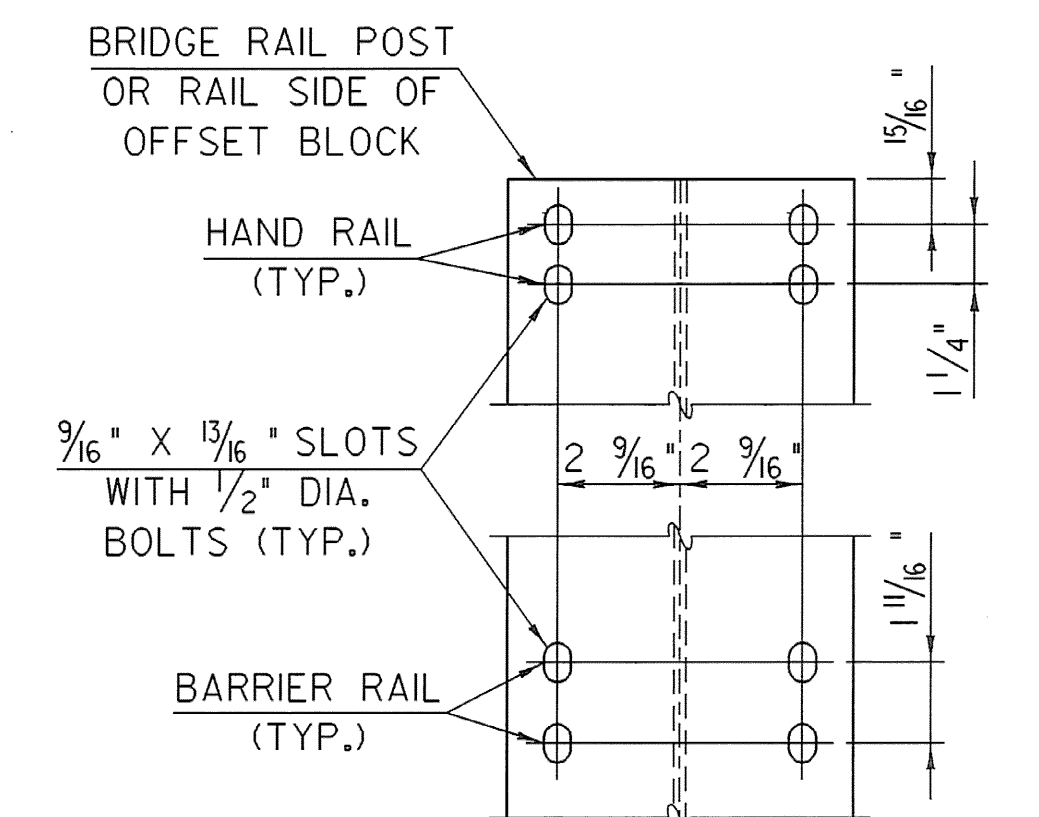
NOTES: RAIL POSTS ARE TO BE SET NORMAL TO GRADE UNLESS OTHERWISE DESIGNATED ON BRIDGE PLANS. ALL DIMENSIONS ARE TYPICAL UNLESS OTHERWISE DESIGNATED ON BRIDGE PLANS.



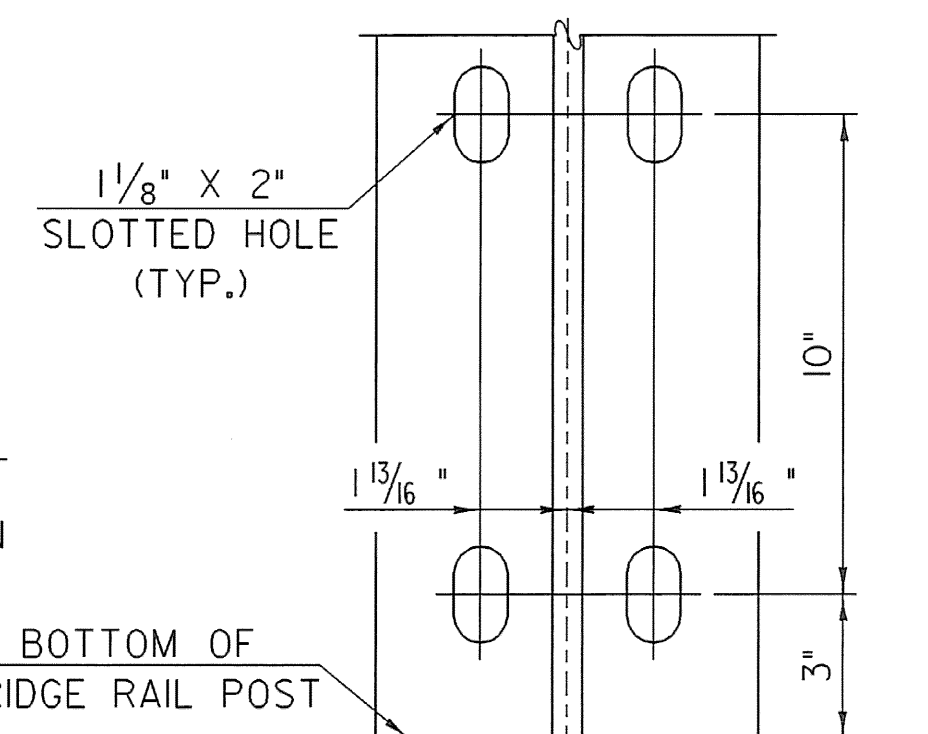
SECTION AA



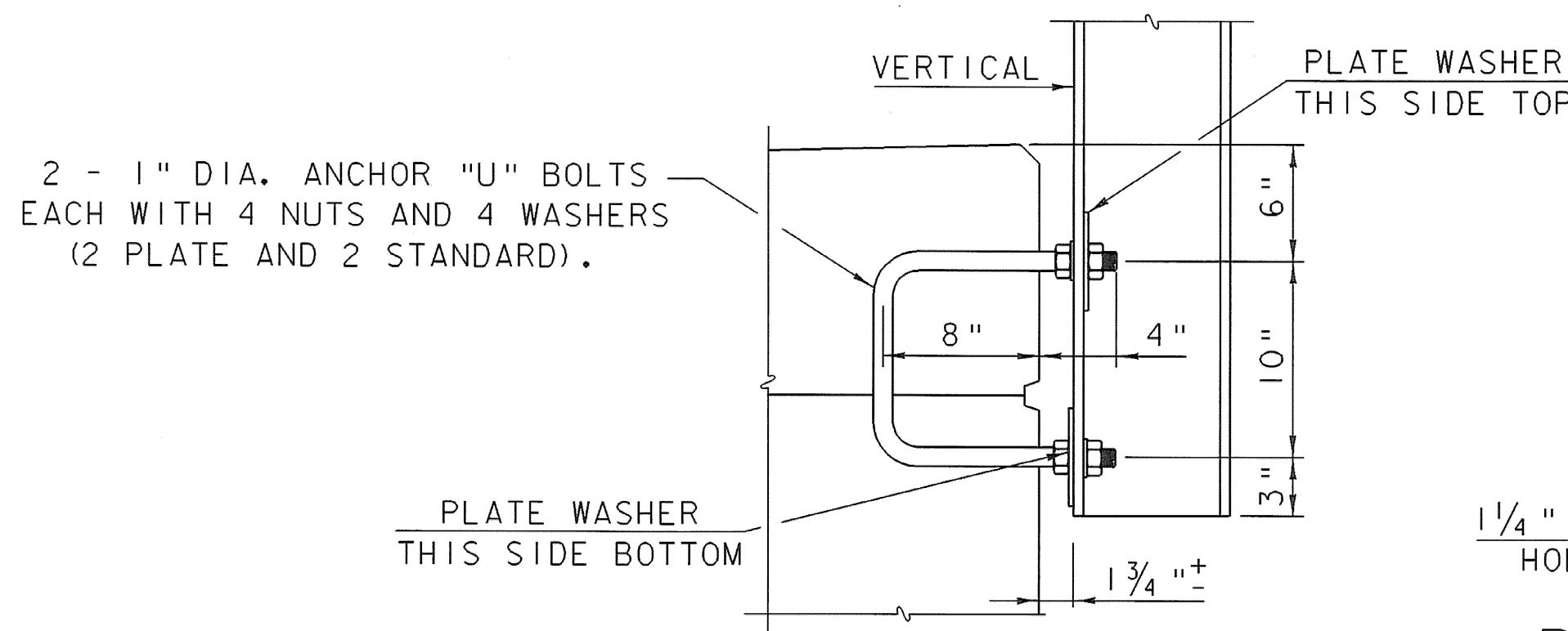
OUTSIDE ELEVATION OF THREE RAIL POST & SPINDLES



RAIL CONNECTION



POST ANCHORAGE BOLT HOLE DETAILS



ANCHORAGE DETAIL

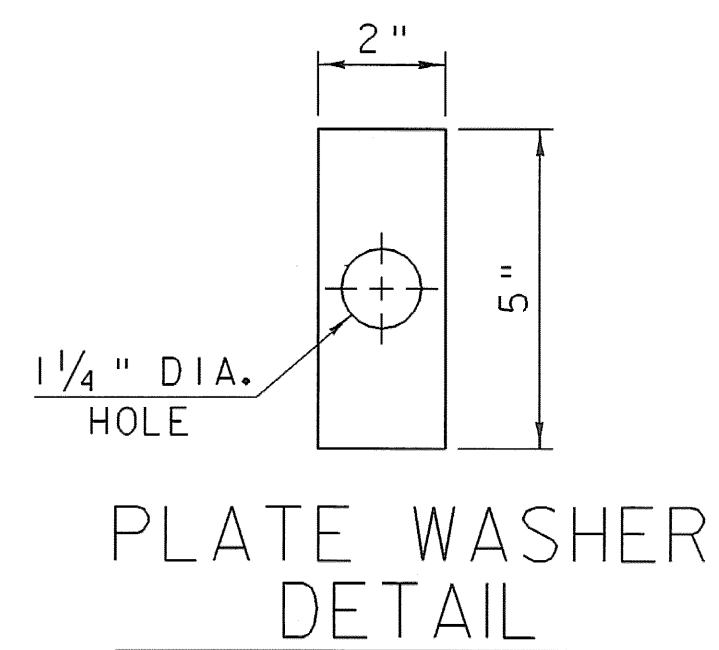


PLATE WASHER DETAIL

DETAILS OF SPINDLES FOR ALUMINUM RAILING

ALUMINUM RAILING DETAILS (SHEET 5)

PROJECT NAME: POWNAL	PLOT DATE: 08-FEB-2008
PROJECT NUMBER: BRZ 1441(19) C/2	DRAWN BY: STR3
FILE NAME: /87e045/str/se045rail.dgn	CHECKED BY: C. CARLSON
PROJECT LEADER: R. WHITCOMB	SHEET 63 OF 108
DESIGNED BY: C. CARLSON	
se045rail5.1	