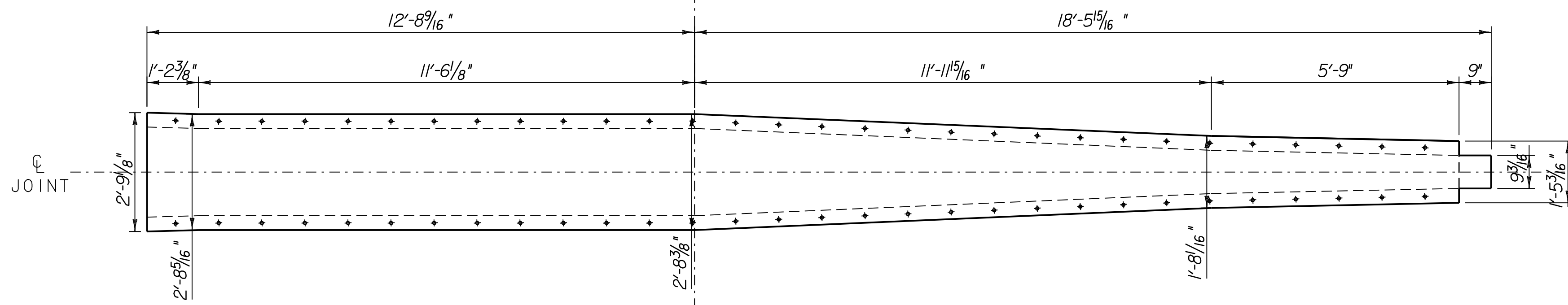
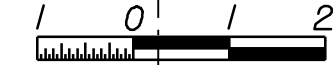


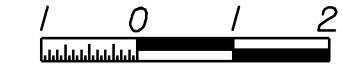
FABRIC TROUGH ELEVATION VIEW

SCALE 1/2" = 1'-0"



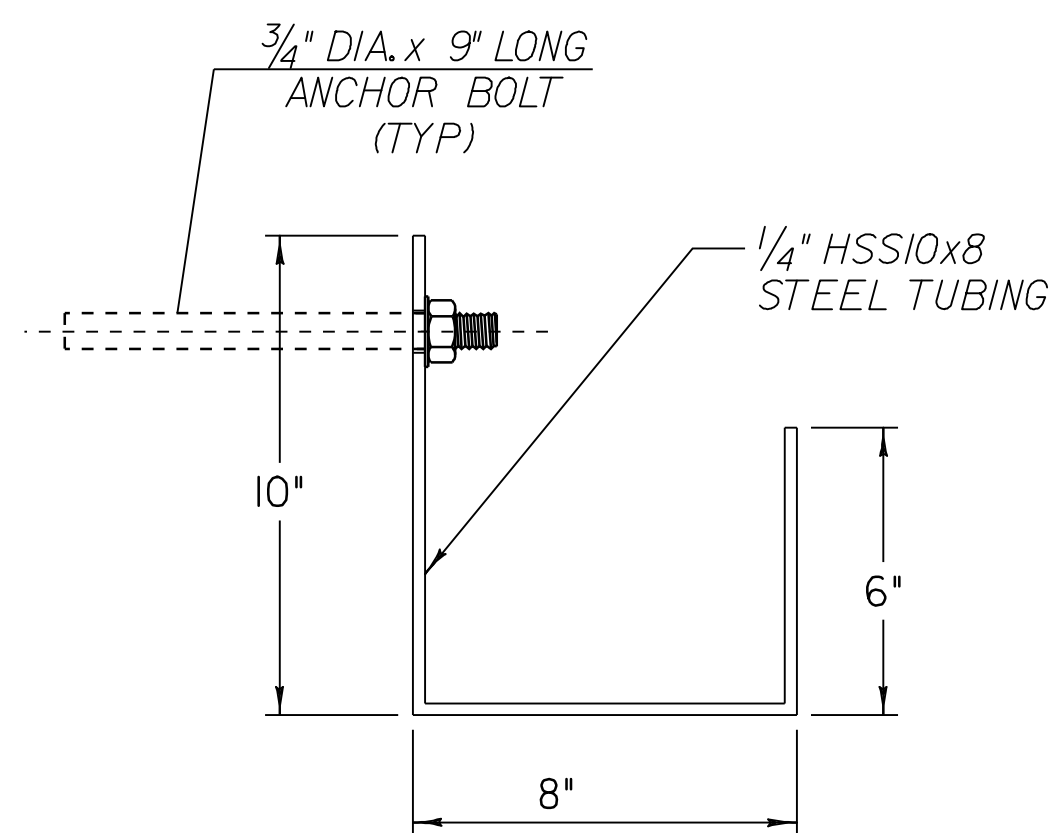
FABRIC TROUGH PLAN VIEW

SCALE 1/2" = 1'-0"



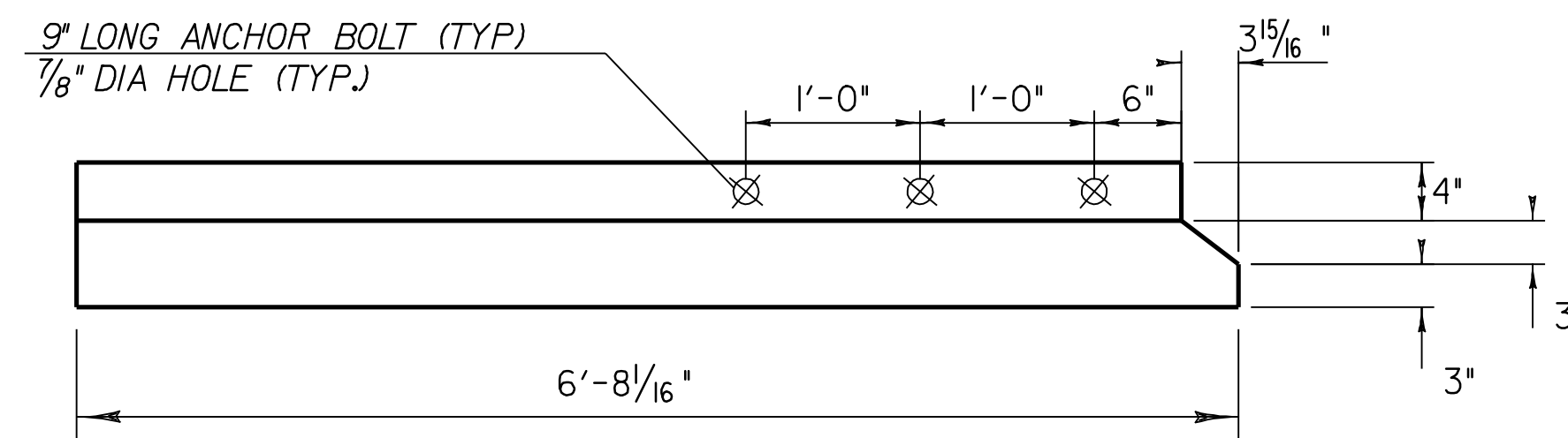
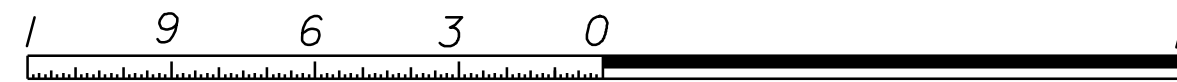
DOWNSPOUT NOTES

1. HOLLOW STRUCTURAL STEEL TUBING SHALL CONFORM TO SUBSECTION 714.II. AND GALVANIZED IN ACCORDANCE WITH SUBSECTION 506.15(G) AFTER FABRICATION.
2. ALL BOLTS AND RELATED HARDWARE SHALL CONFORM TO SUBSECTION 714.04 AND SHALL BE GALVANIZED IN ACCORDANCE WITH SUBSECTION 516.02.
3. AREAS WHERE THE GALVANIZING HAS BEEN REMOVED FROM THE DOWNSPOUT EITHER BY CUTTING, BURNING, WELDING, PLACING, OR ANY OTHER MEANS SHALL BE REPAIRED IN CONFORMANCE WITH SUBSECTION 513.06(F).
4. THE DOWNSPOUT, AND ALL ANCHOR BOLTS WITH RELATED HARDWARE SHALL BE PAID FOR UNDER ITEM 506.60, "STRUCTURAL STEEL".



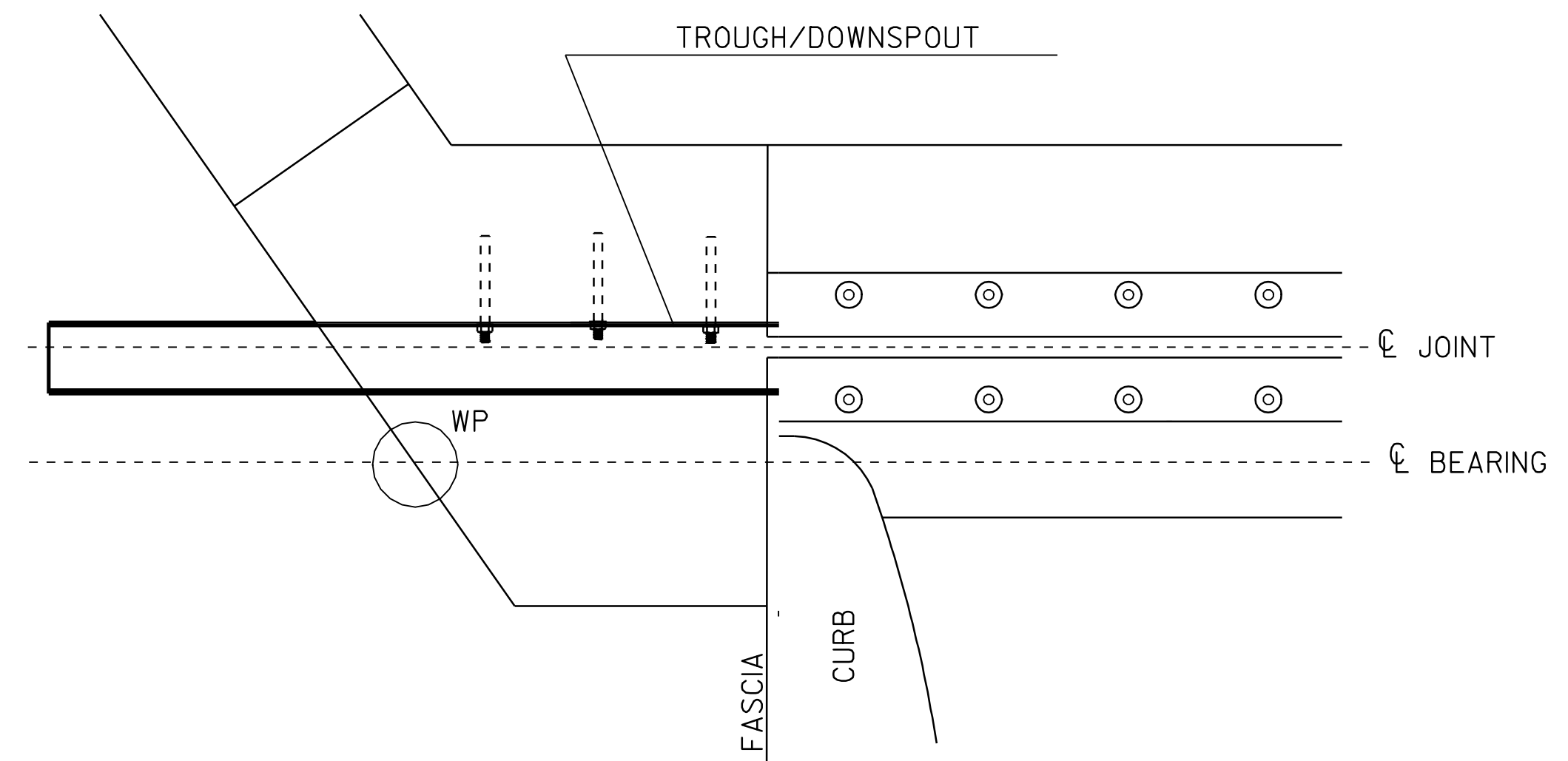
DOWNSPOUT SECTION

SCALE 3" = 1'-0"



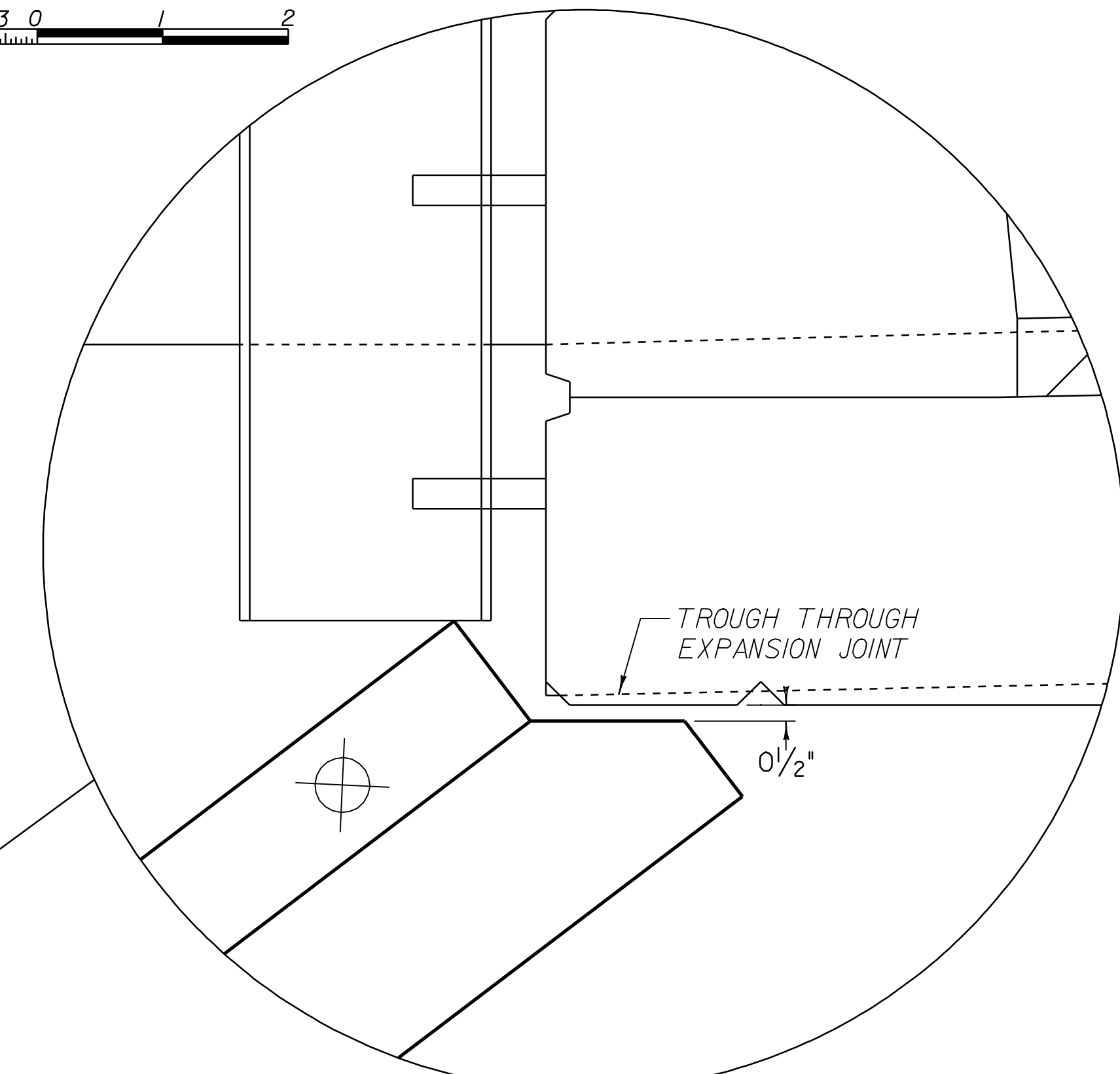
FRONT VIEW

SCALE 1" = 1'-0"



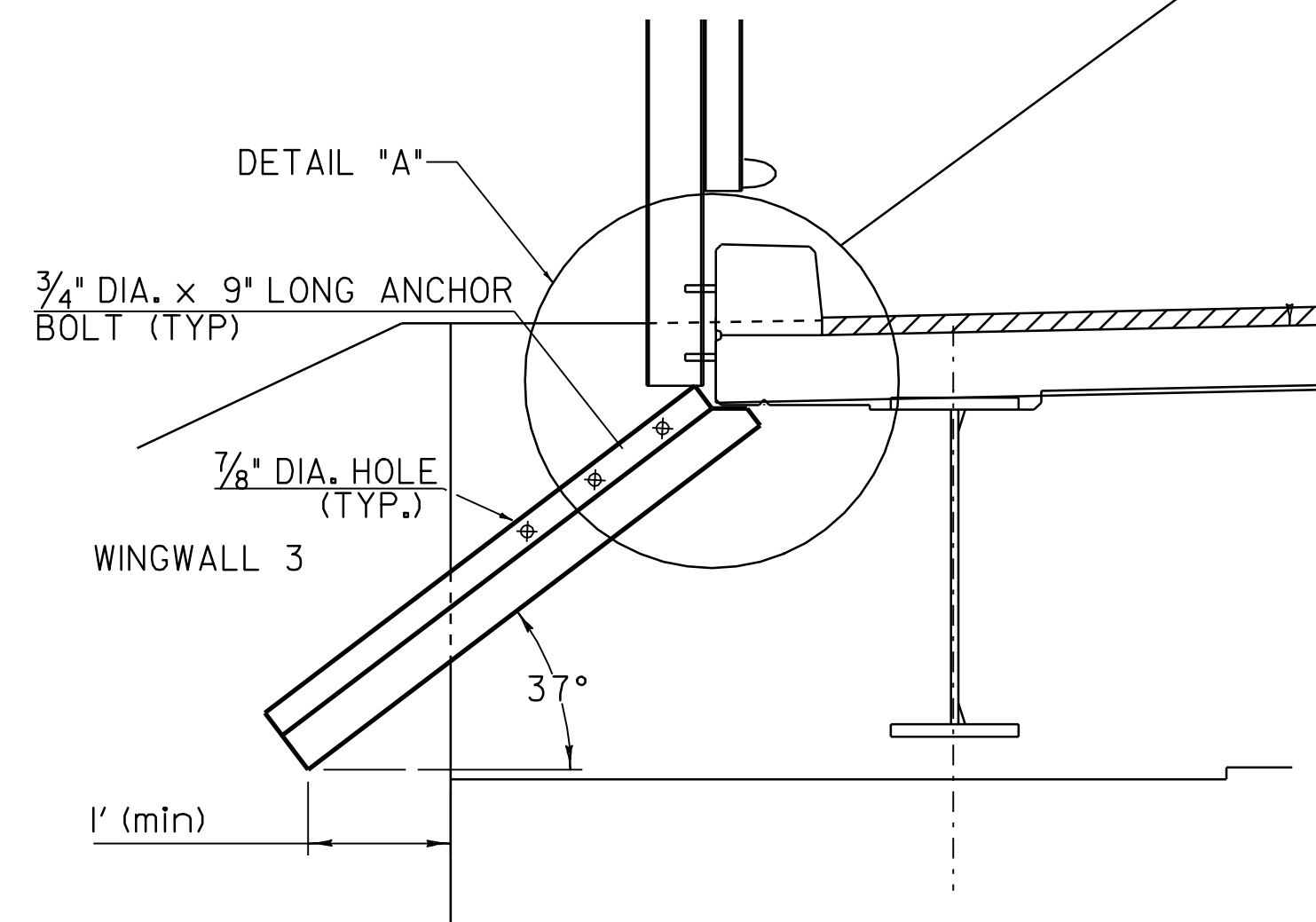
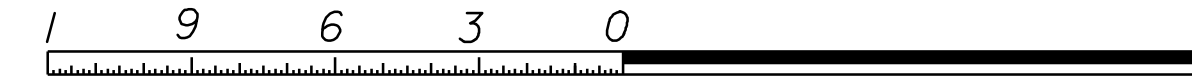
DOWNSPOUT PLAN

SCALE 1" = 1'-0"



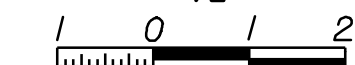
DETAIL "A"

SCALE 3" = 1'-0"



DOWN SPOUT ELEVATION VIEW

SCALE 1/2" = 1'-0"



DOWN SPOUT DETAIL SHEET

PROJECT NAME: POWNAL
PROJECT NUMBER: BRZ 1449(I9) C/2

FILE NAME: 87e045\str\se045exp.dgn PLOT DATE: 23-AUG-2010
PROJECT LEADER: R. WHITCOMB DRAWN BY: C. MOONEY
DESIGNED BY: C. MOONEY/R. WHITCOMB CHECKED BY: R. WHITCOMB
SHEET 50 OF 108