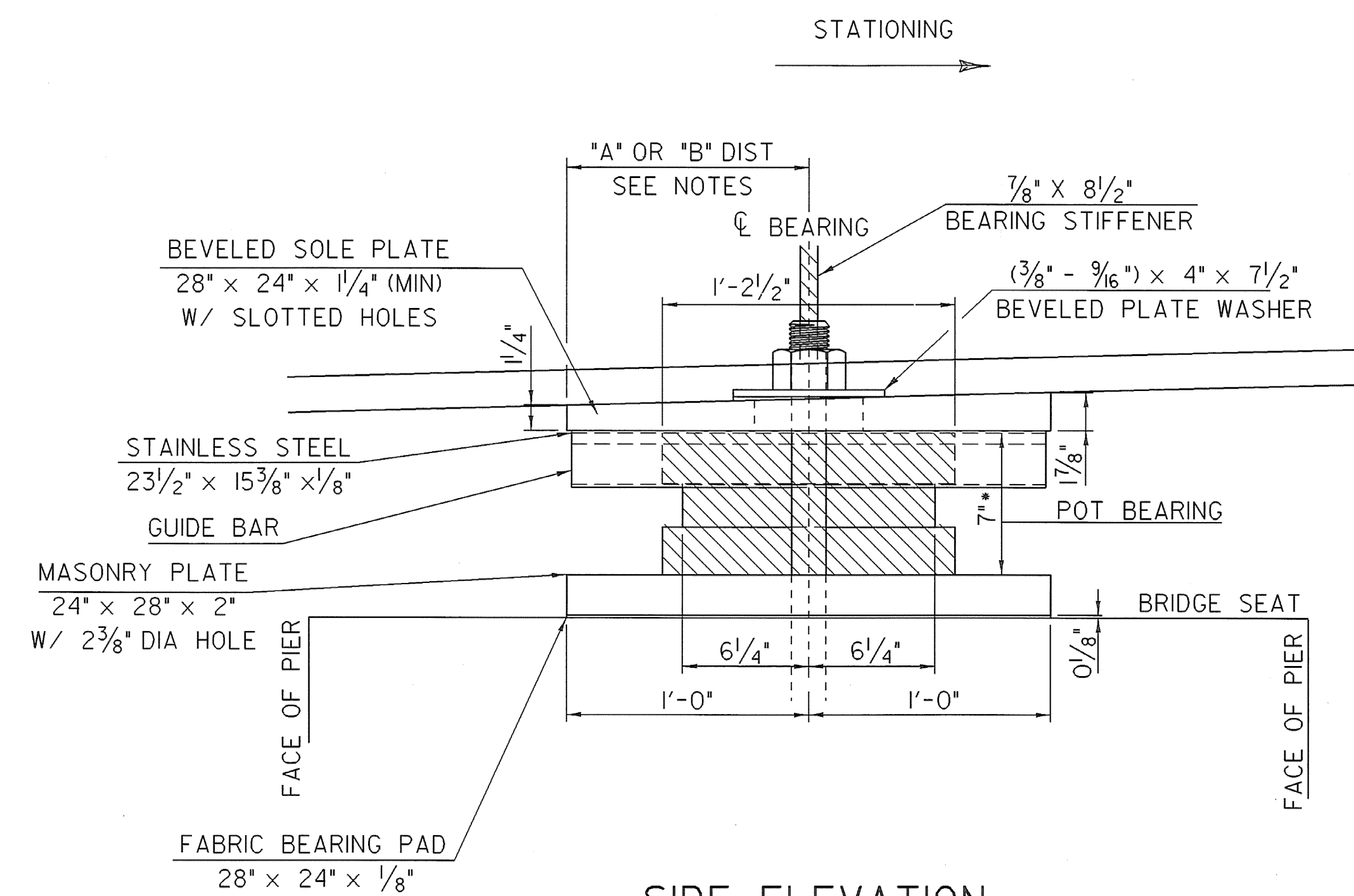


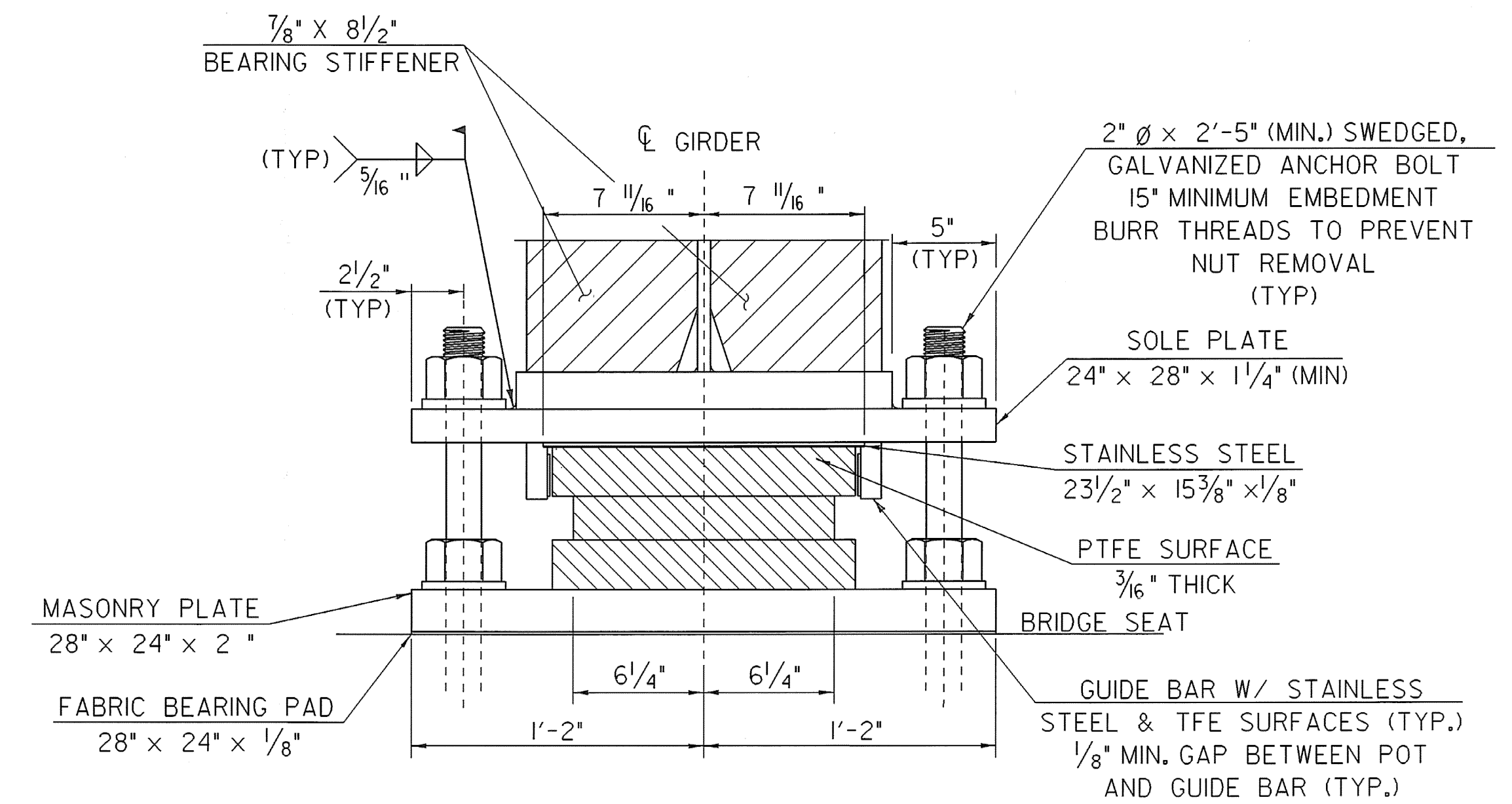
PLAN VIEW

SCALE 2" = 1'-0"



SIDE ELEVATION

SCALE 2" = 1'-0"



EXPANSION BEARING DETAILS @ PIER

FRONT VIEW

SCALE 2" = 1'-0"

BEARING NOTES (PIER):

(SEE SHEET 43 FOR ADDITIONAL NOTES)

- BEARING BASE PLATES SHALL BE PLACED ON A 1/8" FABRIC PAD AS SPECIFIED IN SUBSECTION 731.02.
- BEARING DEVICES AT PIER SHALL BE PAID FOR AT THE UNIT BID PRICE EACH FOR ITEM 531.02, BEARING DEVICE ASSEMBLY, POT.
- DESIGN CRITERIA:
 - A - UNFILLED T.F.E. BEARING SURFACE BEARING PRESSURE: 3500 psi
 - B - BASE PLATES TO CONCRETE BEAM SEAT BEARING PRESSURE: 1000 psi
 - C - ROTATION CAPACITY: 0.015 RADIANS (MINIMUM)
- THE MANUFACTURER OF THE BEARING DEVICE ASSEMBLY, POT ITEM 531.02 SHALL, IN ADDITION TO THE TYPE D CERTIFICATION REQUIRED IN SECTION 731.0, CERTIFY THAT THE UNITS SUPPLIED ARE DESIGNED TO MEET THE LOADING REQUIREMENTS INDICATED BELOW.

VERTICAL	403 Kips
LONGITUDINAL	40 Kips
TRANSVERSE	40 Kips
- THE MAXIMUM VARIATION FROM PARALLEL BETWEEN THE TOP AND BOTTOM SOLE PLATE OF THE BEARING SHALL BE 0.01 RADIANS.
- ANCHOR BOLTS SHALL HAVE A MINIMUM 15 INCHES EMBEDMENT INTO THE CONCRETE AND SHALL CONFORM TO THE REQUIREMENT OF ASTM F 568M, CLASS 8.8 (ASTM A449, TYPE 1).
- THE CONTRACTOR MAY SUBMIT DESIGNS FOR ALTERNATE POT BEARINGS FOR APPROVAL.

SETTING TABLE @ PIER

TEMP	*A* DIST	*B* DIST
-30°F	12 1/16"	13 1/4"
-15°F	12 3/16"	13 1/16"
0°F	12 1/2"	12 5/16"
15°F	12 5/16"	12 3/4"
30°F	12 3/16"	12 5/8"
45°F	12"	12 1/16"
60°F	11 13/16"	12 1/4"
75°F	11 11/16"	12 1/8"
90°F	11 1/2"	11 5/16"
105°F	11 3/8"	11 1/16"
120°F	11 1/16"	11 5/8"

* SEE FINAL FABRICATION DRAWINGS FOR EXACT DIMENSIONS. BRIDGE SEATS MAY NEED TO BE ADJUSTED.

SHEET NAME: BEARING DETAILS SHEET 3	
PROJECT NAME: POWNAL	HIGHWAY NO.: TH 24
PROJECT NUMBER: BRZ 144(I9) C/2	BRIDGE NO.: 41
	OVER: HOOSIC RIVER
FILE NAME: /87e045/str/se045sup.dgn	PLOT DATE: 08-FEB-2008
PROJECT MANAGER: R. WHITCOMB	DRAWN BY: T. FILLBACH
DESIGNED BY: T. FILLBACH/C. CARLSON	IPARM NAME: se045sup8.i
	SHEET 45 OF 108