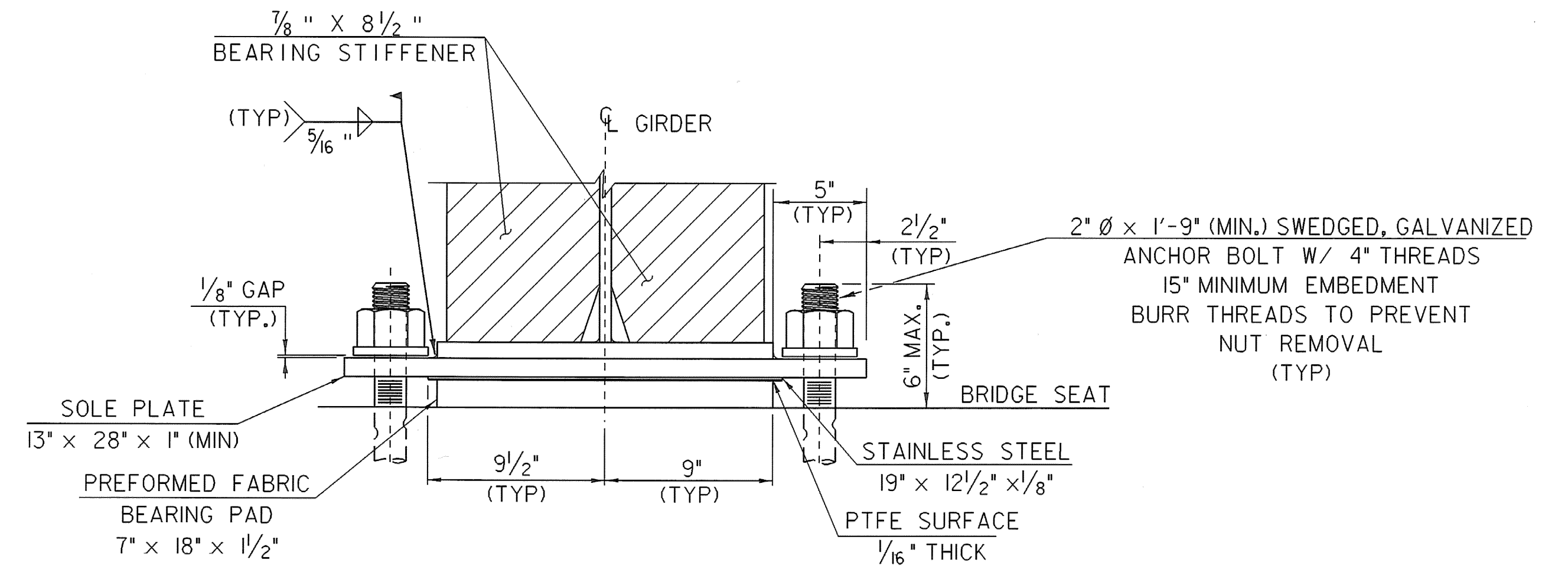


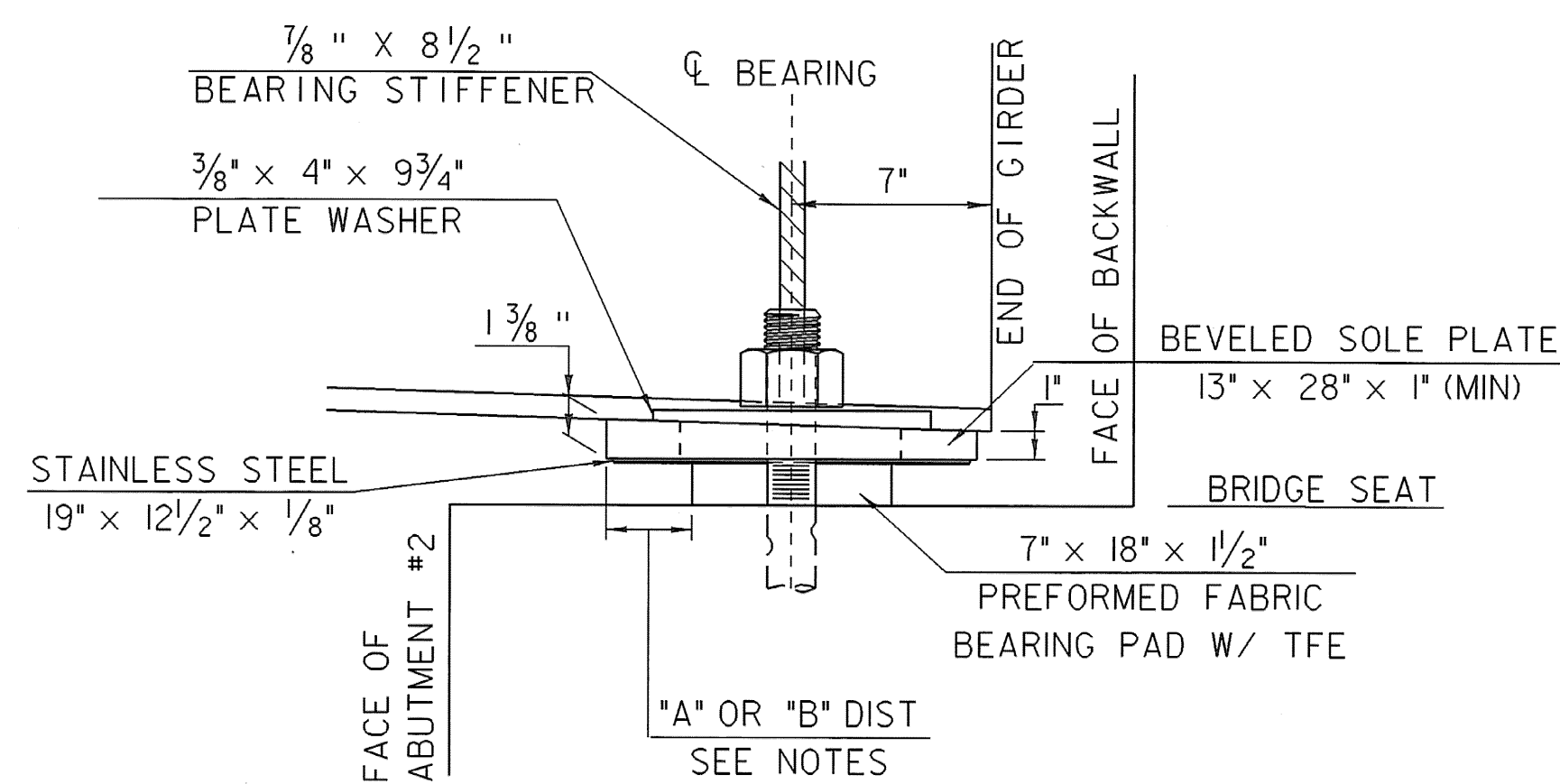
PLAN VIEW
SCALE 2" = 1'-0"



EXPANSION BEARING DETAILS @ ABUTMENT #2
FRONT VIEW
SCALE 2" = 1'-0"

BEARING NOTES

1. BEARINGS SHALL CONFORM TO THE APPLICABLE PROVISIONS OF SECTIONS 531 AND 731 OF THE STANDARD SPECIFICATIONS.
2. BEARINGS AT ABUTMENTS SHALL BE PAID FOR UNDER ITEM 531.10 "BEARING DEVICE ASSEMBLY, PREFORMED FABRIC PAD".
3. FABRICATION DRAWINGS SHALL BE SUBMITTED AS PER STANDARD SPECIFICATION 531.03. THE SUBMITTAL SHALL INCLUDE ASSOCIATED WELDING AND BONDING PROCEDURES.
4. DESIGN CRITERIA: (ABUTMENTS)
 - A. DESIGN FABRIC PAD TO CONCRETE PRESSURE: 1000 PSI MAXIMUM
 - B. DESIGN ROTATION: 0.015 RADIAN MINIMUM
 - C. DESIGN VERTICAL LOAD @ ABUT. NO. 1 = 176 kips
DESIGN VERTICAL LOAD @ ABUT. NO. 2 = 125 kips
 - D. DESIGN HORIZONTAL LOAD: MINIMUM 10% OF VERTICAL LOAD
5. THE "A" DISTANCE IS THE FINAL SETTING FOR THE BEARING PAD AFTER THE CONCRETE SLAB, CURB, PAVEMENT AND BRIDGE RAIL HAVE BEEN PLACED. THE "B" DISTANCE IS FOR SETTING THE BEARING AFTER THE STRUCTURAL STEEL IS ERECTED AND BEFORE THE CONCRETE DECK IS POURED. THE DIFFERENCE IS THE THEORETICAL ELONGATION OF THE BOTTOM FLANGE DUE TO DEAD LOAD DEFLECTION. THE FINAL "A" DISTANCE SHOWN IN THE TABLE MUST BE ATTAINED WITHIN 1/8 INCH.
6. THE CONCRETE SURFACE UNDER THE BEARING DEVICE SHALL BE LEVEL.
7. ANCHOR BOLTS FOR ALL BEARINGS ON THIS PROJECT SHALL HAVE A MINIMUM 15 INCHES EMBEDMENT INTO THE CONCRETE AND SHALL CONFORM TO STANDARD SPECIFICATION 714.08 AND BE CLASS 8.8 (ASTM A449, TYPE 1).
8. ALL STEEL IN BEARING DEVICES (EXCEPT STAINLESS STEEL) SHALL BE GRADE 50.
9. ALL BEARING DEVICES SHALL BE GALVANIZED OR METALIZED AS PER STANDARD SPECIFICATIONS 506.15 AND 531.04 (b). IF THE BEARINGS ARE METALIZED, THEY SHALL BE SEALED WITH AN APPROVED SEALER AS SPECIFIED IN SUBSECTION 506.15. AREAS OF GALVANIZING OR METALIZING DAMAGED BY FIELD WELDING OR HANDLING SHALL BE REPAIRED IN CONFORMANCE WITH ASTM A-760.
10. ALL ANCHOR BOLTS, NUTS AND WASHERS SHALL BE GALVANIZED. ALL WASHERS SHALL BE 3/8 INCH PLATE MINIMUM. PAYMENT FOR ANCHOR BOLTS, NUTS, WASHERS AND THEIR INSTALLATIONS SHALL BE INCLUDED IN THE UNIT PRICE BID FOR ITEM 531.10, "BEARING DEVICE ASSEMBLY, PREFORMED FABRIC PAD".



SIDE ELEVATION
SCALE 2" = 1'-0"

SETTING TABLE
@ ABUTMENT #2

TEMP	"A" DIST	"B" DIST
-30°F	4 3/8	4 7/8
-15°F	4 1/16	4 9/16
0°F	3 9/16	4 5/16
15°F	3 9/16	4 1/16
30°F	3 1/4	3 3/4
45°F	3	3 1/2
60°F	2 3/4	3 1/4
75°F	2 1/16	2 5/16
90°F	2 3/16	2 1/16
105°F	1 5/16	2 1/16
120°F	1 5/8	2 1/8

SHEET NAME: BEARING DETAILS SHEET 2		
PROJECT NAME: POWNAL	HIGHWAY NO.: TH 24	
PROJECT NUMBER: BRZ 144(I9) C/2	BRIDGE NO.: 41	
	OVER: HOOSIC RIVER	
FILE NAME: /87e045/s+tr/se045sup.dgn	PLOT DATE: 03-MAR-2008	
PROJECT MANAGER: R. WHITCOMB	DRAWN BY: T. FILLBACH	
DESIGNED BY: T.FILLBACH/C.CARLSON	IPARM NAME: se045sup7.1	
	SHEET 44 OF 108	