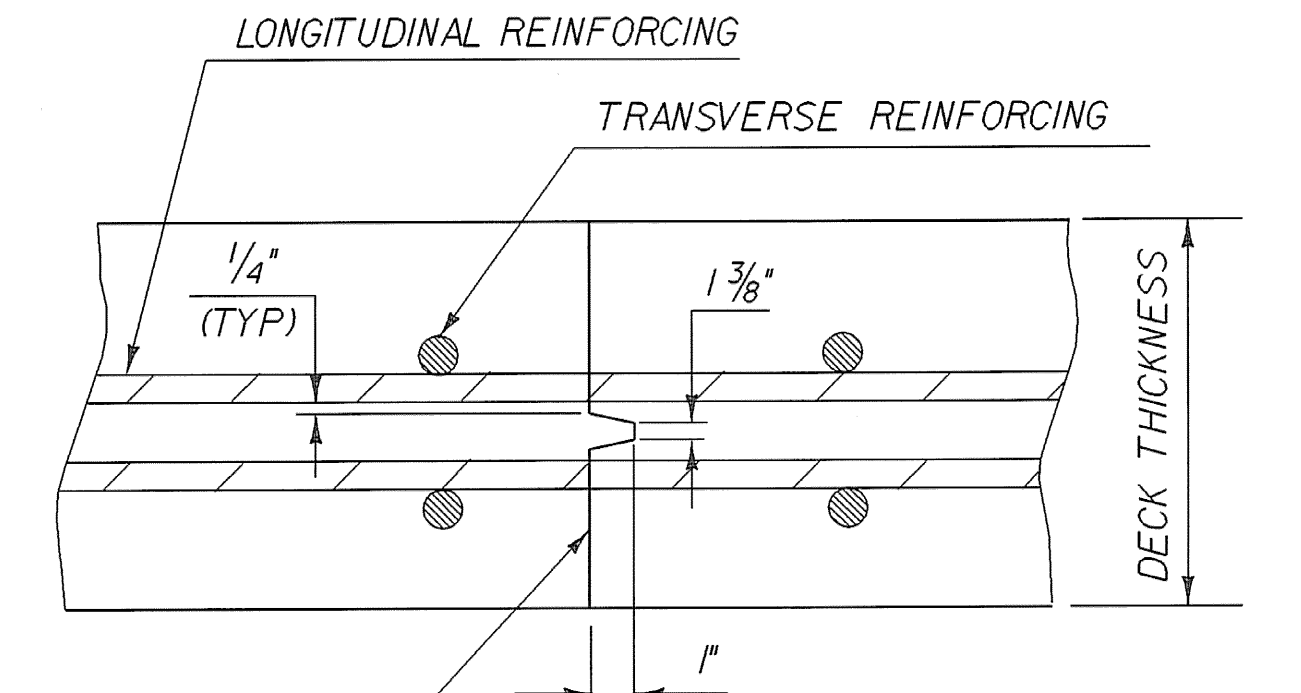


NOTE: THE 3" HORIZONTAL SECTION MAY BE ELIMINATED FOR FORMING SYSTEMS DESIGNED FOR THE CONSTRUCTION OF VERTICAL HAUNCHES. SYSTEMS SHALL BE SUBMITTED FOR APPROVAL TO THE STRUCTURES ENGINEER. ALL VOIDS SHALL BE FILLED WITH POLYURETHANE JOINT SEALER OR AN EQUIVALENT PRODUCT FROM THE APPROVED PRODUCTS LIST. COST SHALL BE INCIDENTAL TO ADJACENT CONCRETE ITEM

HAUNCH AND SHEAR CONNECTOR DETAILS

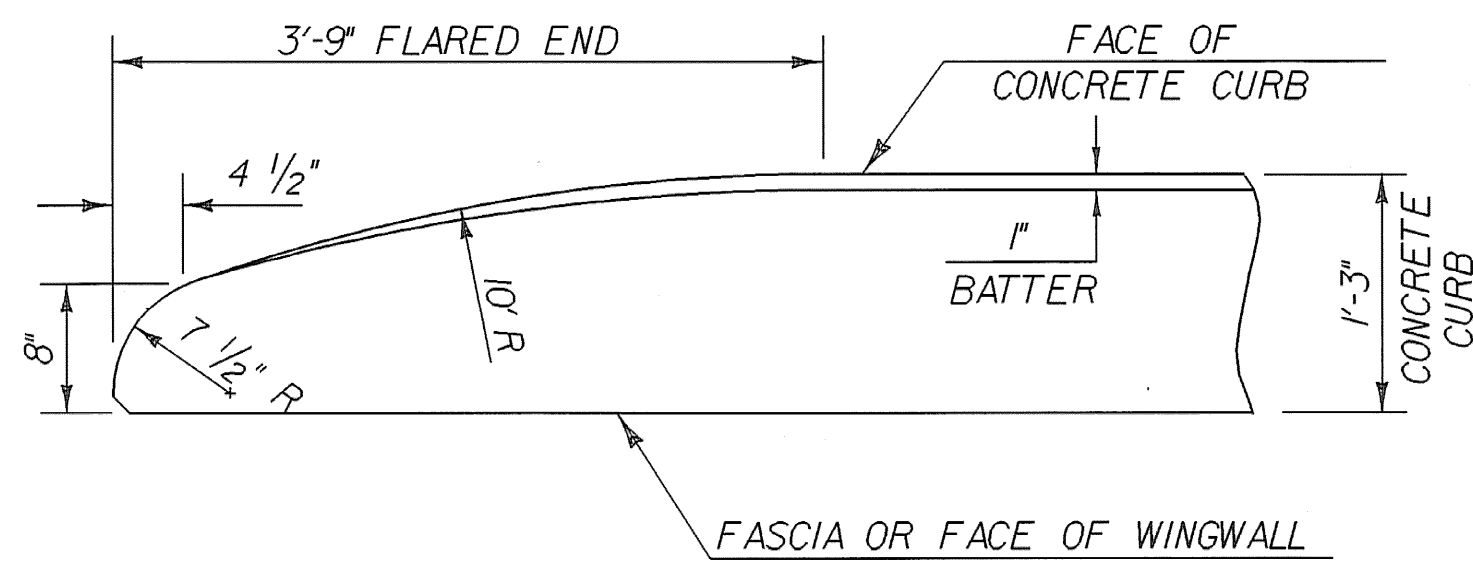


APPLY EPOXY BONDING COMPOUND BEFORE PLACING NEW CONCRETE. INCLUDE WITH COST BID FOR ADJACENT CONCRETE.

TRANSVERSE BRIDGE SLAB CONSTRUCTION JOINT DETAILS

POUR SEQUENCE NOTES:

- ①, ② AND ③ INDICATE THE SEQUENCE IN WHICH THE SECTIONS ARE TO BE POURED. A MINIMUM OF 96 HOURS BETWEEN POURS IS REQUIRED.
- POUR ① AND ② MAY BE MADE IN THE SAME DAY.
- IF APPROVED BY THE ENGINEER, ENTIRE DECK MAY BE POURED THE SAME DAY PROVIDED THAT THE MAXIMUM TIME SPAN OF THE POUR IS 8 HOURS AND A RETARDING ADMIXTURE IS USED SO THAT THE DECK CONCRETE WILL NOT SET UP UNTIL ALL THE POUR HAS BEEN MADE. THE ADMIXTURE WILL BE INCIDENTAL TO THE ITEM, "CONCRETE, HIGH PERFORMANCE CLASS A".
- TRANSVERSE BRIDGE SLAB CONSTRUCTION JOINTS, AS SHOWN ON THIS SHEET SHALL BE USED BETWEEN ADJACENT DECK POURS.
- ALL POURS SHALL START FROM THE LOW END OF EACH POUR.

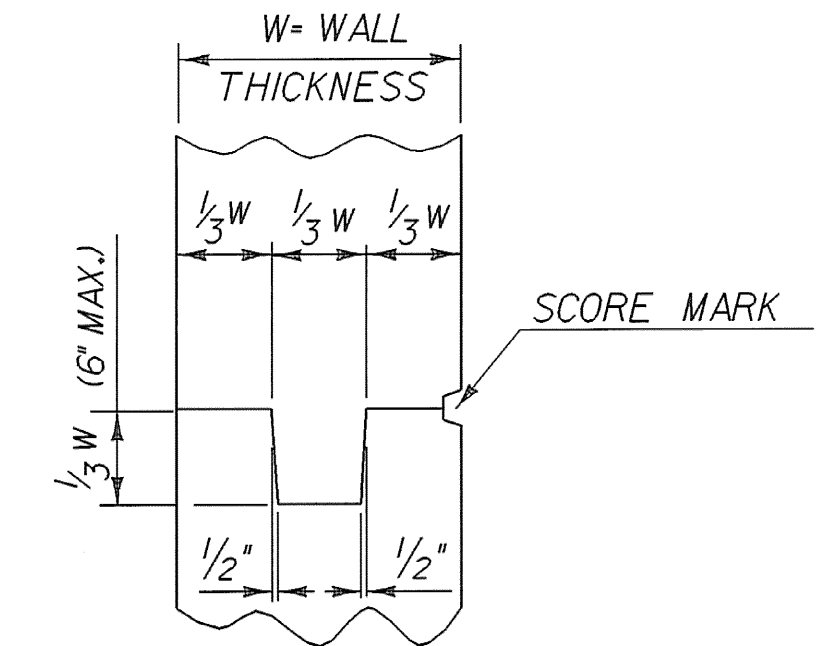


FLARED END DETAIL FOR 1'-3" CURB

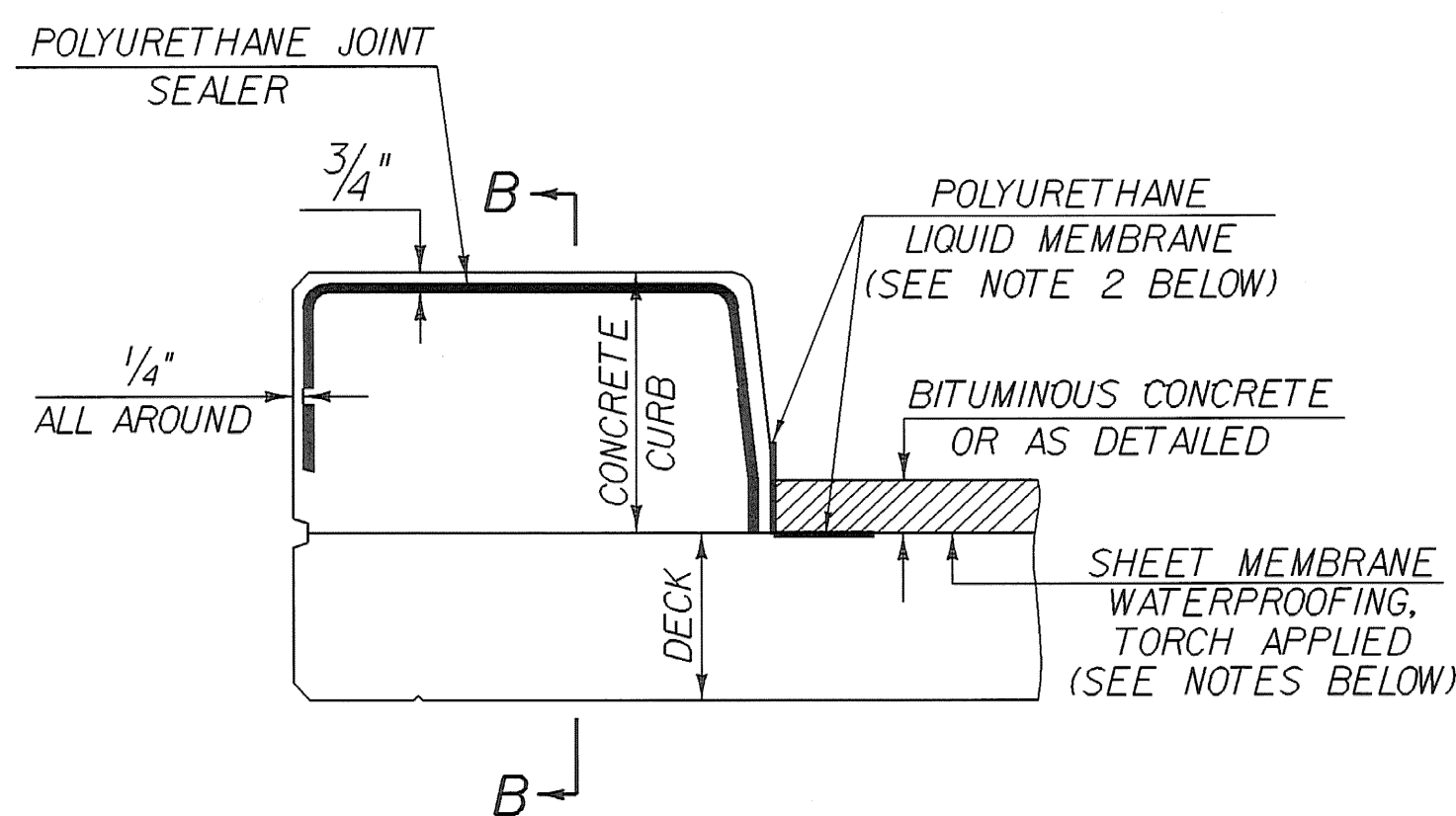
CURB REINFORCING STIRRUP BARS SHALL BE TURNED AS REQUIRED TO FIT FLARED ENDS.

CURB NOTES:

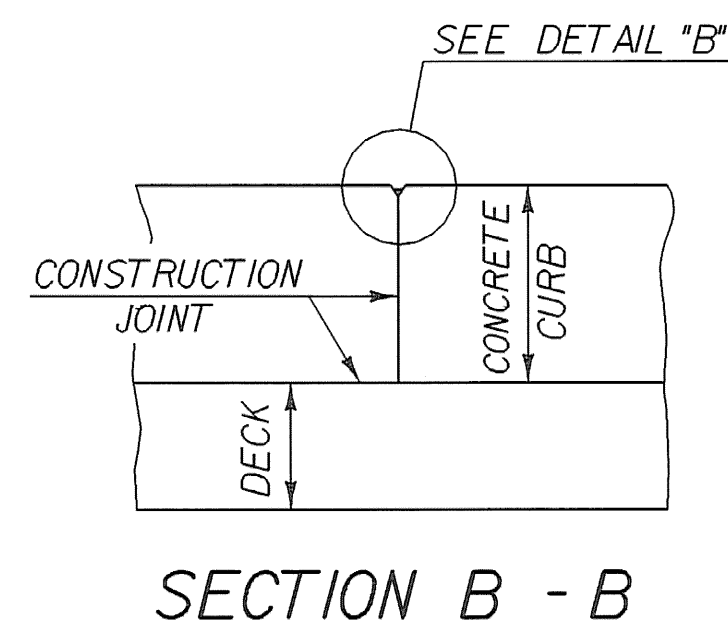
- CURBS AND SIDEWALKS MAY BE POURED IN ONE CONTINUOUS POUR (EXCEPT JOINTS ARE TO BE PLACED AT CENTER OF PIER AND 10' EACH SIDE OF PIER CENTER LINE.) HOWEVER, AN APPROVED SHRINKAGE REDUCING ADMIXTURE MUST BE USED. PAYMENT FOR THE ADMIXTURE SHOULD BE INCLUDED IN ITEM 501.33, "CONCRETE, HIGH PERFORMANCE, CLASS A".
- CONSTRUCTION JOINTS SHALL BE 1' - 9" MINIMUM FROM THE CENTER OF THE NEAREST BRIDGE RAIL POST. CONCRETE SHALL BE PLACED IN ALTERNATE SECTIONS WITH A MINIMUM OF 48 HOURS BETWEEN ADJACENT POURS
- LONGITUDINAL REINFORCING SHALL PASS THROUGH CONCRETE CONSTRUCTION JOINTS. CURB REINFORCING STIRRUP BARS SHALL BE TURNED AS REQUIRED TO FIT FLARED ENDS.



TYPICAL CONCRETE CONSTRUCTION JOINT

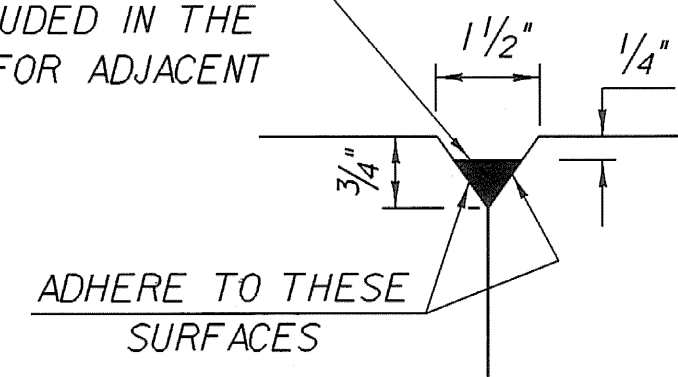


TYPICAL SECTION THROUGH CONCRETE CURB CONSTRUCTION JOINT



SECTION B - B

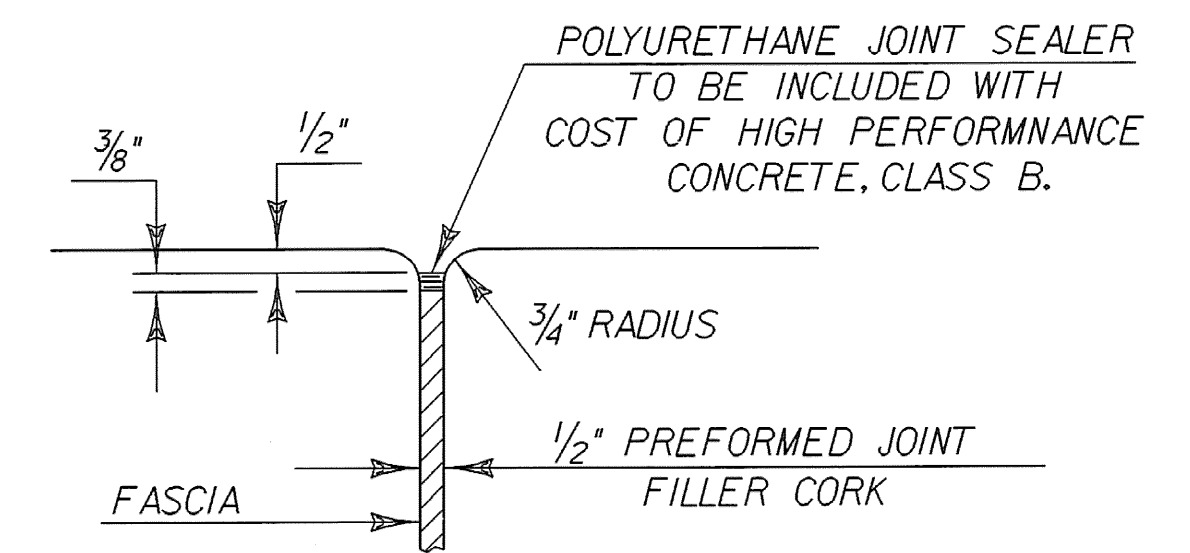
POLYURETHANE JOINT SEALER PER SUBSECTION 524.06C COLOR TO MATCH CONCRETE. COST TO BE INCLUDED IN THE UNIT PRICE BID FOR ADJACENT CONCRETE.



DETAIL "B"

SHEET MEMBRANE NOTES:

- SUBSECTION 519.04 SURFACE PREPARATION: PREPARE THE SURFACE OF THE FACE OF THE CURB TO BE SEALED WITH POLYURETHANE LIQUID MEMBRANE IN THE SAME MANNER AS THE DECK.
- POLYURETHANE LIQUID MEMBRANE: PAYMENT FOR ITEM 519.20 "SHEET MEMBRANE WATER PROOFING, TORCH APPLIED" INCLUDES POLYURETHANE LIQUID MEMBRANE.
- SHEET MEMBRANE WATERPROOFING, TORCH APPLIED : EXTEND SHEET MEMBRANE WATERPROOFING TO FACE OF CURB.



JOINT BETWEEN FASCIA AND WINGWALL

| | | | |
|--|-----------------------------------|-------------------------|--|
| SHEET NAME: SUPERSTRUCTURE DETAILS SHEET 3 | | | |
| PROJECT NAME: POWNAL | HIGHWAY NO.: TH 24 | BRIDGE NO.: 41 | |
| PROJECT NUMBER: BRZ 144I(19) C/2 | OVER: HOOSIC RIVER | | |
| FILE NAME: /87e045/str/se045sup.dgn | PLOT DATE: 10-MAR-2008 | DRAWN BY: T.FILLBACH | |
| PROJECT MANAGER: R.WHITCOMB | DESIGNED BY: T.FILLBACH/C.CARLSON | IPARM NAME: se045sup5.1 | |
| SHEET 42 OF 108 | | | |