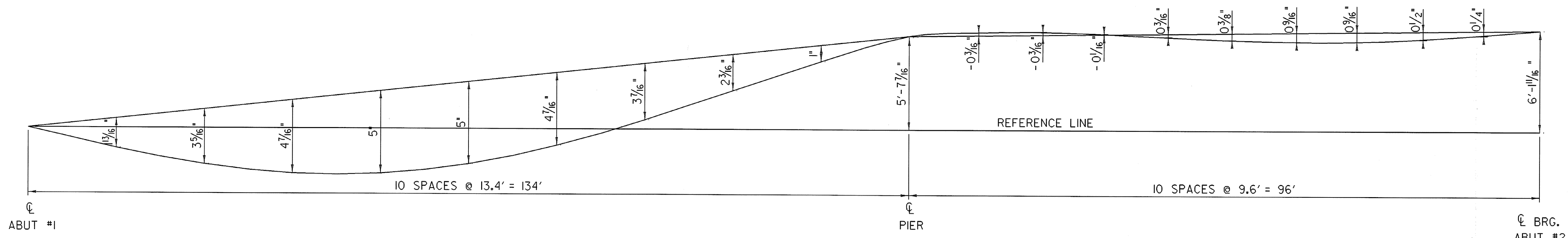


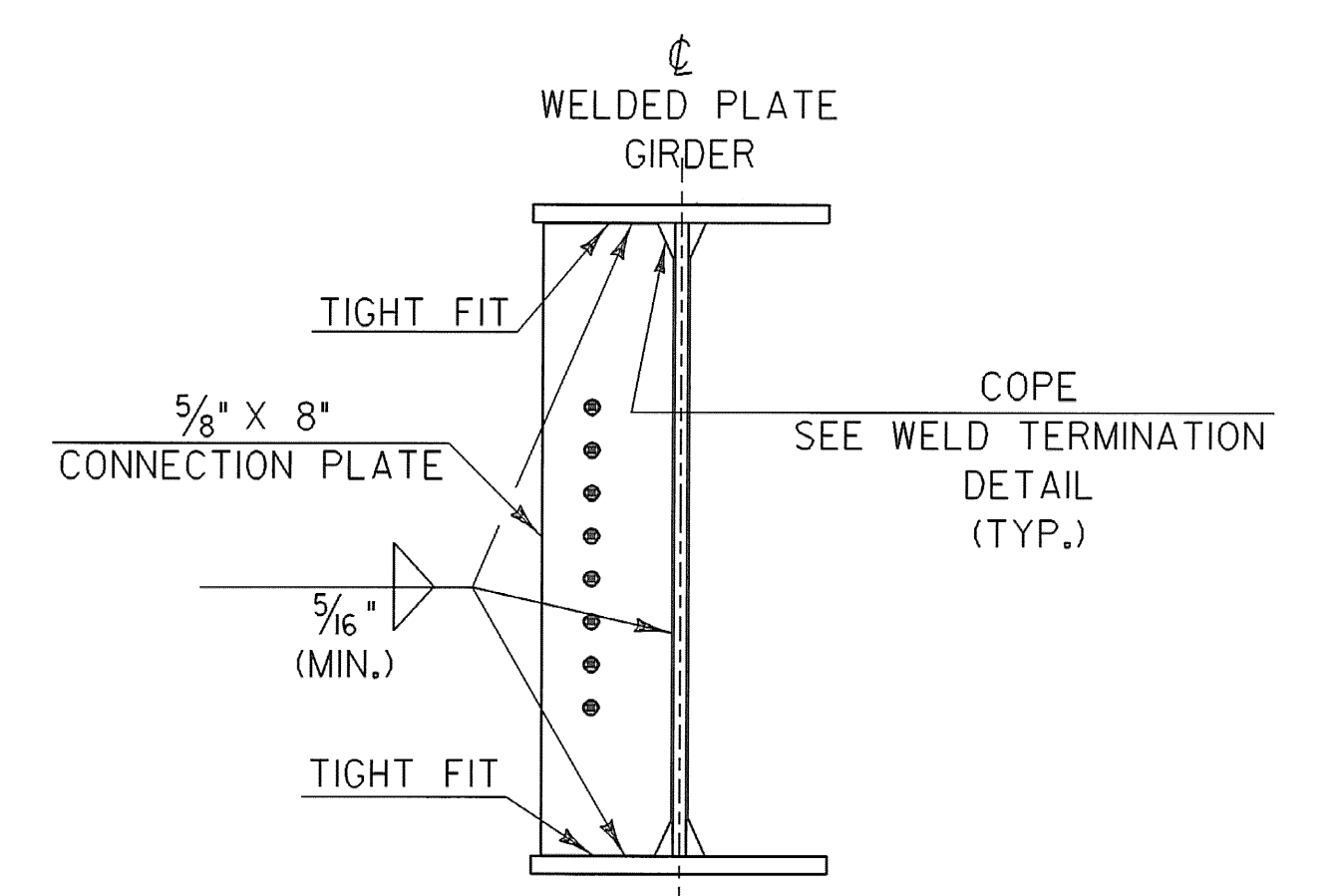
CAMBER DIAGRAM
NO SCALE



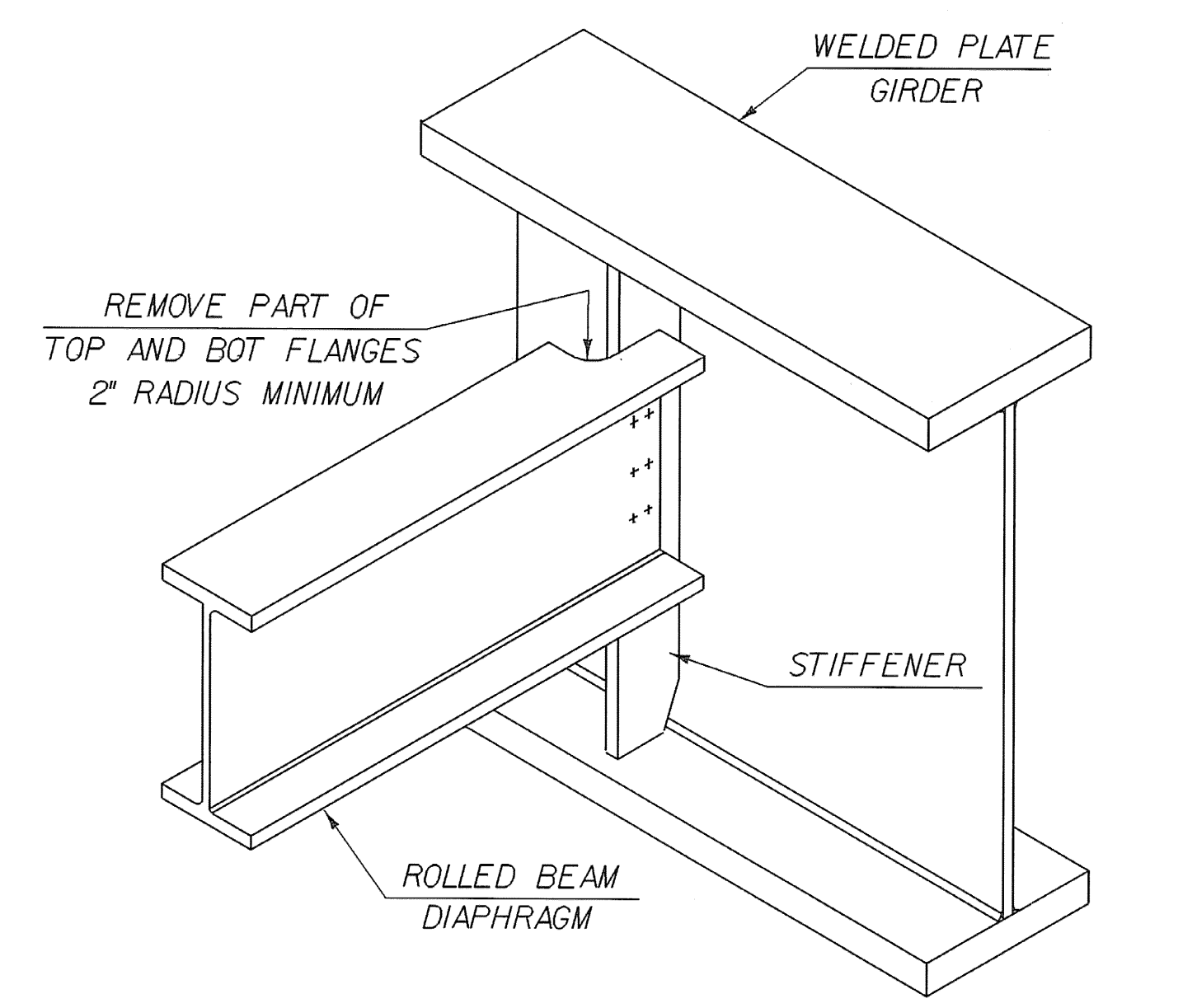
DEAD LOAD DEFLECTION DIAGRAM
NO SCALE

NOTES:

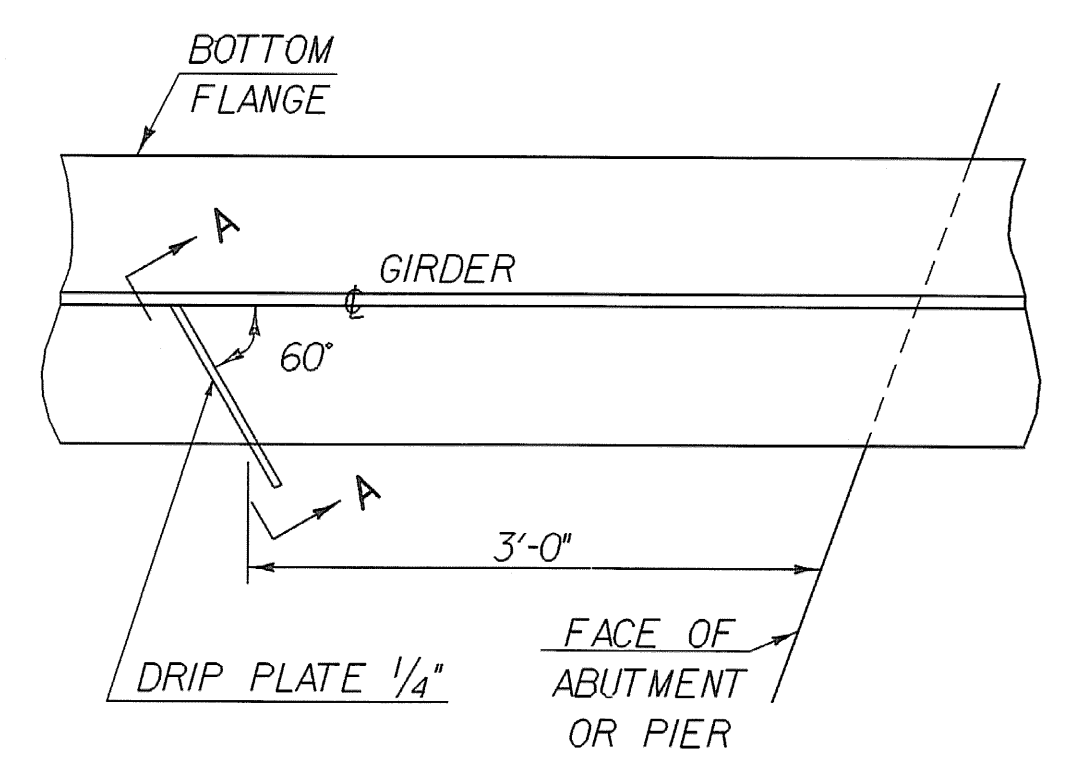
CAMBER AND DEFLECTION MEASUREMENTS ARE GIVEN @ TENTH POINTS. MEASUREMENTS INCLUDE GIRDER SELFWEIGHT.



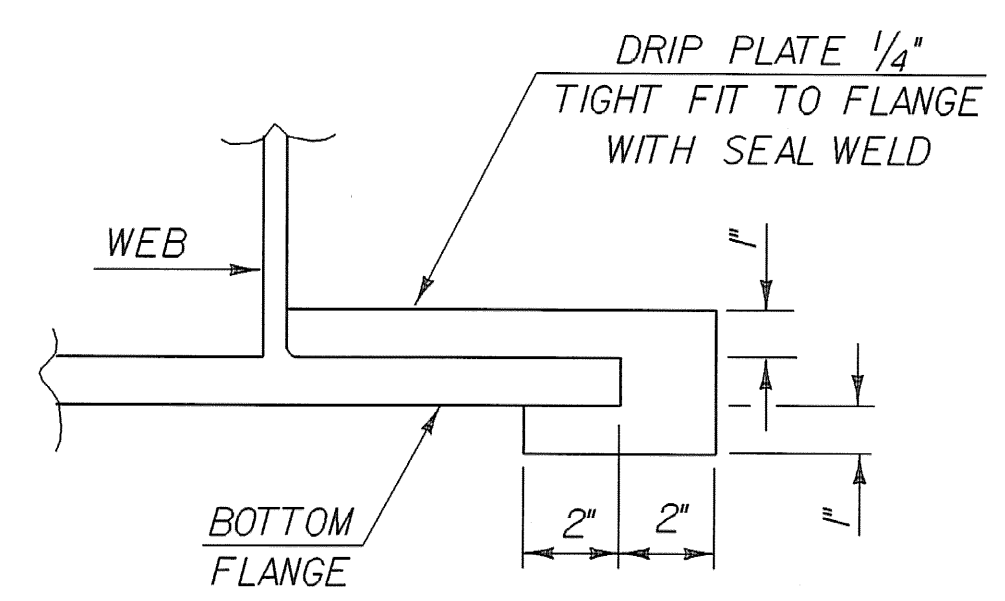
INTERMEDIATE CONNECTION PLATES FOR WELDED PLATE GIRDERS



ROLLED BEAM USED AS DIAPHRAGM
SEE CONTRACT DRAWINGS FOR SIZES OF MEMBERS AND CONNECTION DETAILS

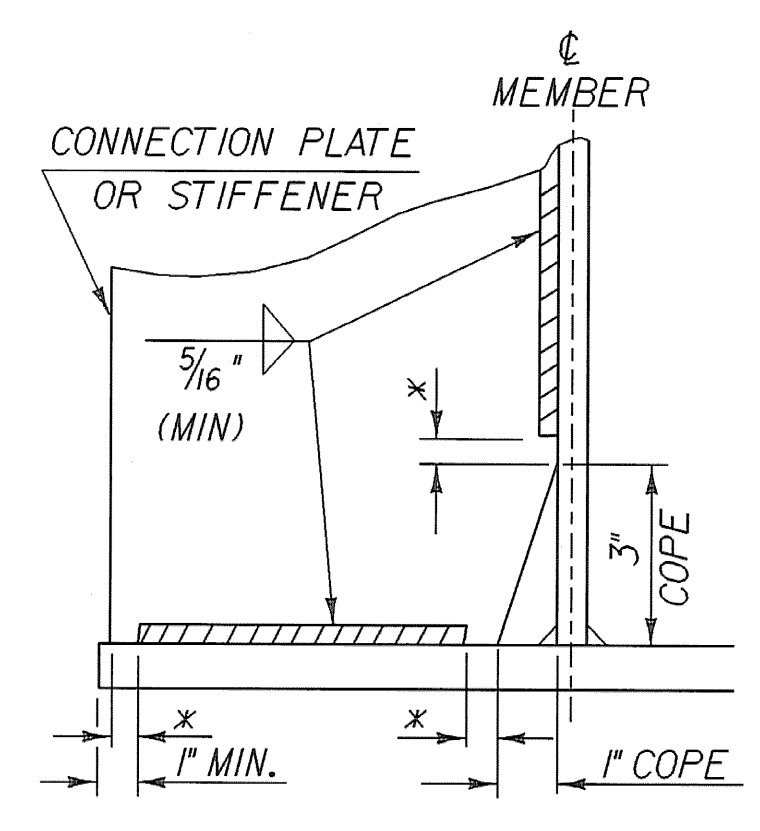


PLAN DRIP PLATE



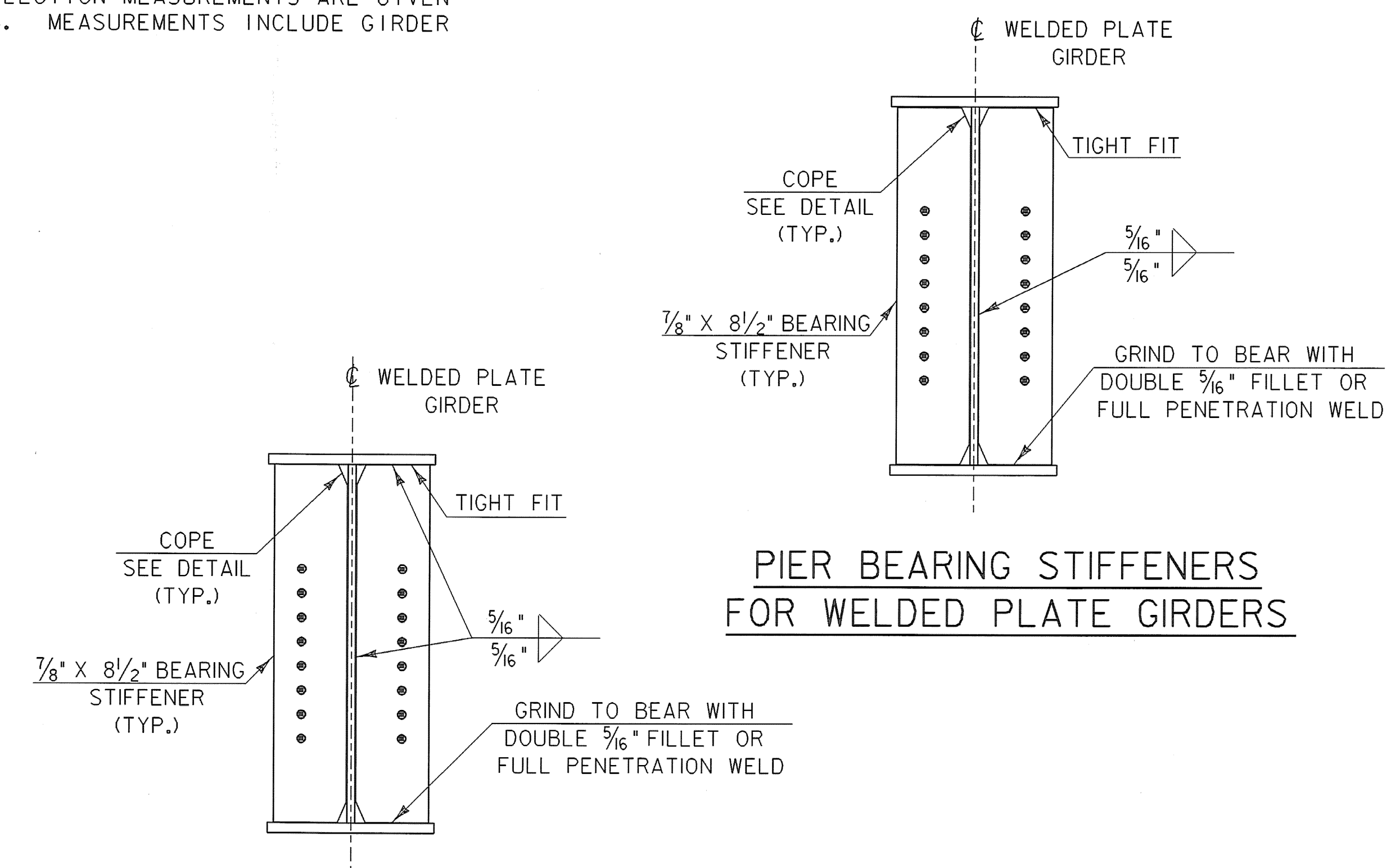
SECTION A - A

NOTE: DRIP PLATES SHALL BE PLACED ON THE OUTSIDE EDGE OF FASCIA GIRDERS ON THE HIGH SIDE OF THE PIER AND AT BOTH ABUTMENTS.



WELD TERMINATION AND COPING DETAILS FOR STEEL MEMBERS

* NO WELD FOR 3/8" MIN. 7/8" MAX. (EXCEPT MUST MAINTAIN 1" MINIMUM FROM EDGE OF FLANGE)



ABUTMENT BEARING STIFFENERS FOR WELDED PLATE GIRDERS

SHEET NAME: SUPERSTRUCTURE DETAILS SHEET I		
PROJECT NAME: POWNAL	HIGHWAY NO.: TH 24	
PROJECT NUMBER: BRZ 144(I9) C/2	BRIDGE NO.: 41	
	OVER: HOOSIC RIVER	
FILE NAME: /87e045/str/se045sup.dgn	PLOT DATE: 08-FEB-2008	
PROJECT MANAGER: R. WHITCOMB	DRAWN BY: T. FILLBACH	
DESIGNED BY: T.FILLBACH/C.CARLSON	IPARM NAME: se045sup3.i	
	SHEET 40 OF 108	