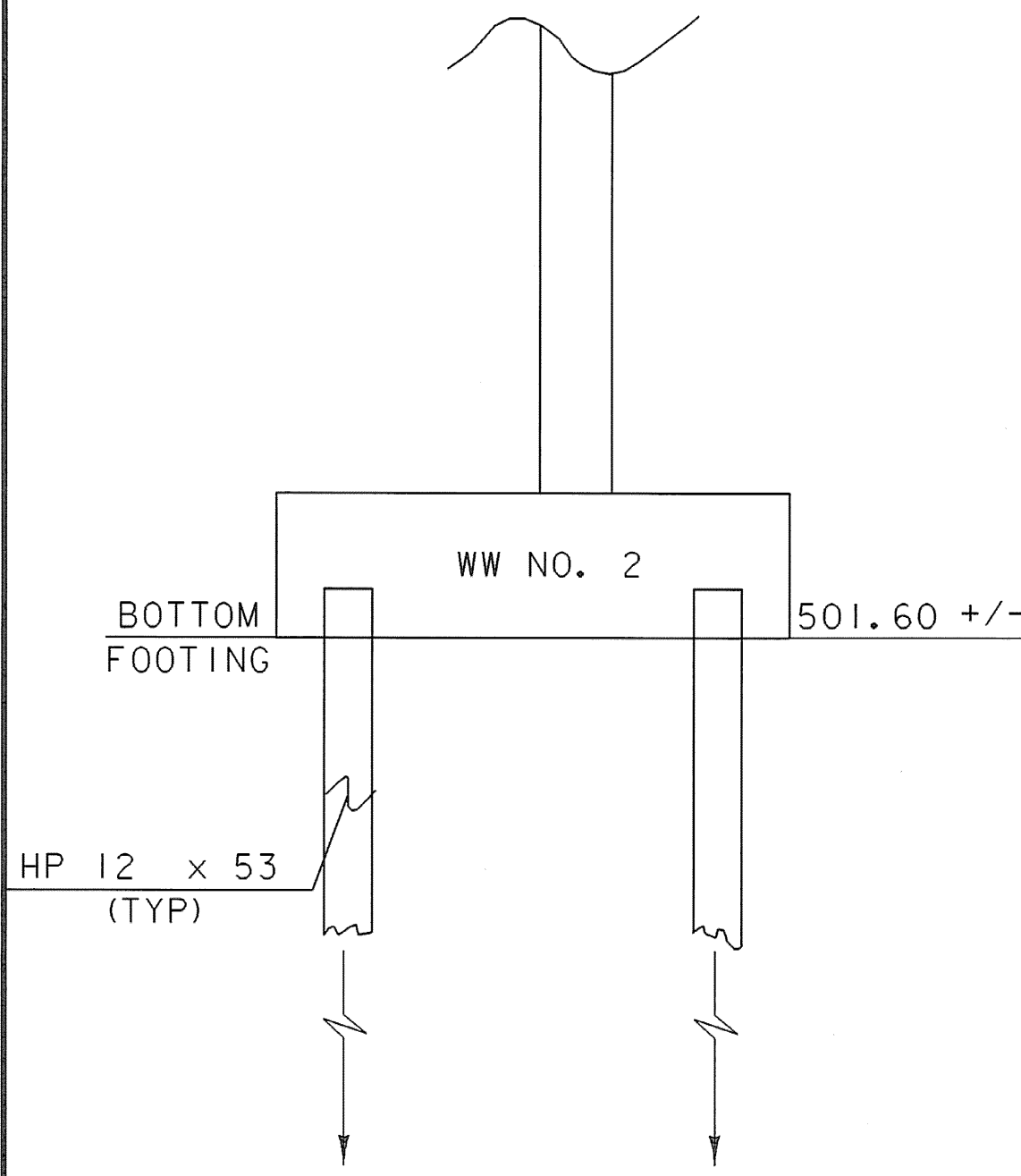
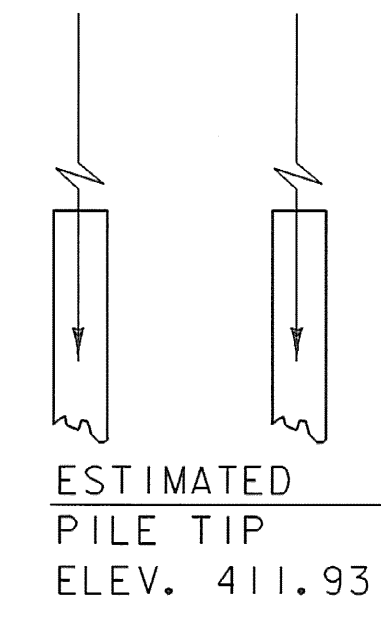


STATE OF VERMONT AGENCY OF TRANSPORTATION MATERIALS & RESEARCH DIVISION SUBSURFACE INFORMATION										HOLE NO.: B-1 SHEET 1 OF 3 DATE STARTED: 4/7/98 DATE COMPLETED: 4/13/98	
PROJECT NAME: POWNAL SITE NAME: BR-41 STATION: II+54.00 GROUND EL.: 513.23					PROJECT NUMBER: BRZ 1441(19) SITE NO.: TH #24 OFFSET: -16.00 G.W. DEPTH:						
BORING CREW CREW CHIEF: MCGLYNN DRILLER: CHABOT E J LOGGER:					BORING RIG: TRUCK BORING TYPE: WASH BORE SAMPLE TYPE: SPLIT BARREL/VANE SHEAR						
DEPTH	SYMBOL	CLASSIFICATION OF MATERIALS (Description)	BLOWS PER FOOT	M.C. %	GRAVEL %	SAND %	FINES %	LL	PI		
5		A-1-b, GrSa, brn., Dry, Rec. = 0.8'	23	8.6	42.5	46.2	12.3				
10		A-1-a, Gr, gry/brn., Moist, Rec. = 0.3'	19	12.2	83.3	15.4	1.3				
15		A-1-b, GrSa, brn., MTW, Rec. = 0.7'	8	20.8	38.5	43.6	17.9				
20		A-1-a, SaGr, Lt/gry, Dry, Rec. = 1.1'	64	9.9	57	30.5	12.5				
25		A-4, SaCISi (visual), gry, MTW, Rec. = 1.3'	11	33	46.4	53.6					
30		A-4, CISi (visual), gry, MTW, Rec. = 1.5'	14	32.2	5.4	94.6					
35		A-4, CISi (visual), gry, MTW, Rec. = 0.9'	15	24.7	12.4	87.6					
40		A-4, SaSi, gry, MTW, VS Sample	21.8	0.3	23.5	76.2	25	6			
45		A-4, CISi (visual), gry, Moist, Rec. = 1.4'	20	19	25.9	74.1					
		43.6'-44.0' VS= 1670/540 psf									
		A-7-6, SiCl, gry, MTW, Rec. = 2.0'	5	37.6	1	99	41	15			
		48.6'-49.0' VS= 2003/700 psf									



STATE OF VERMONT AGENCY OF TRANSPORTATION MATERIALS & RESEARCH DIVISION SUBSURFACE INFORMATION										HOLE NO.: B-1 SHEET 2 OF 3 DATE STARTED: 4/7/98 DATE COMPLETED: 4/13/98	
PROJECT NAME: POWNAL SITE NAME: BR-41 STATION: II+54.00 GROUND EL.: 513.23					PROJECT NUMBER: BRZ 1441(19) SITE NO.: TH #24 OFFSET: -16.00 G.W. DEPTH:						
BORING CREW CREW CHIEF: MCGLYNN DRILLER: CHABOT E J LOGGER:					BORING RIG: TRUCK BORING TYPE: WASH BORE SAMPLE TYPE: SPLIT BARREL/VANE SHEAR						
DEPTH	SYMBOL	CLASSIFICATION OF MATERIALS (Description)	BLOWS PER FOOT	M.C. %	GRAVEL %	SAND %	FINES %	LL	PI		
50		A-7-6, SiCl (visual), gry, MTW, Rec. = 1.7'	5	42.6	1.4	98.6					
		53.6'-54.0' VS= 1675/505 psf									
55		A-7-6, SiCl, gry, MTW, Rec. = 2.0'	6	41.5	0.3	99.7	42	16			
		58.6'-59.0' VS= 1668/435 psf									
60		A-7-6, SiCl, gry, MTW, Rec. = 2.0'	3	42.7		100					
		63.6'-64.0' VS= 1665/400 psf									
65		A-7-6, SiCl, gry, MTW, Rec. = 2.0'	3	44.1		100	45	17			
		68.6'-69.0' VS= 1675/410 psf									
70		A-6, SiCl (visual), gry, MTW, Rec. = 2.0'	5	46.3		100					
		73.6'-74.0' VS= 2000/640 psf									
75		A-6, SiCl, gry, MTW, Rec. = 2.0'	2	45.5		100	39	11			
		78.6'-79.0' VS= 2995/1000 psf									
80		A-6, SiCl (visual), gry, MTW, Rec. = 2.0'	6	41.8		100					
		83.6'-84.0' VS= 3003/1000 psf									
85		A-4, CISi, gry, MTW, Rec. = 1.9'	5	43.3		100	38	8			
		88.6'-89.0' VS= 3020/1285 psf									
90		A-4, CISi (visual), gry, MTW, Rec. = 2.0'	6	35.3		100					
		93.6'-94.0' VS= 3030/1285 psf									
95		A-4, Si, gry, MTW, Rec. = 2.0'	5	37.1		100					



STATE OF VERMONT AGENCY OF TRANSPORTATION MATERIALS & RESEARCH DIVISION SUBSURFACE INFORMATION										HOLE NO.: B-1 SHEET 3 OF 3 DATE STARTED: 4/7/98 DATE COMPLETED: 4/13/98	
PROJECT NAME: POWNAL SITE NAME: BR-41 STATION: II+54.00 GROUND EL.: 513.23					PROJECT NUMBER: BRZ 1441(19) SITE NO.: TH #24 OFFSET: -16.00 G.W. DEPTH:						
BORING CREW CREW CHIEF: MCGLYNN DRILLER: CHABOT E J LOGGER:					BORING RIG: TRUCK BORING TYPE: WASH BORE SAMPLE TYPE: SPLIT BARREL/VANE SHEAR						
DEPTH	SYMBOL	CLASSIFICATION OF MATERIALS (Description)	BLOWS PER FOOT	M.C. %	GRAVEL %	SAND %	FINES %	LL	PI		
100		Top of bedrock @ 101.3'									
		Run#1: BXMDC, 101.3'-104.4', Rec. = 2.3', See Geologist's Report.	1	74	74	40					
105		Run#2: BXMDC, 104.4'-108.3', Rec. = 3.1', See Geologist's Report.	2	79	79	40					
110		Run#3: BXMDC, 108.3'-111.3', Rec. = 2.4', See Geologist's Report.	3	80	80	40					
		Hole stopped @ 111.3'									
		Geologist's Report									
115		Run#1: Gray Phyllitic schist. Moderately hard. Unweathered. Competent. Note: Moderate recovery due to damaged bit. Cored through piece of metal left behind by vane shear test.									
120		Run#2: Green to gray siliceous schist. Hard. Unweathered. Competent.									
125		Run#3: Green to gray siliceous schist. Hard. Unweathered. Competent.									
		Note For All Runs: Core box dropped and contents spilled out. Only definitive info. are run depths, recovery and lithologic descriptions.									

SHEET NAME: BORING LOG SHEET #1	
PROJECT NAME: POWNAL	HIGHWAY NO.: TH 24
PROJECT NUMBER: BRZ 1441(19) C/2	BRIDGE NO.: 41 OVER: HOOSIC RIVER
FILE NAME: /87e045/str/se045bor.dgn	PLOT DATE: 08-FEB-2008
SQUAD LEADER: C.C. BENDA	DRAWN BY: J.TOUCHETTE
DATE: MAY 1998	IPARM NAME: se045br2.i SHEET 24 OF 108