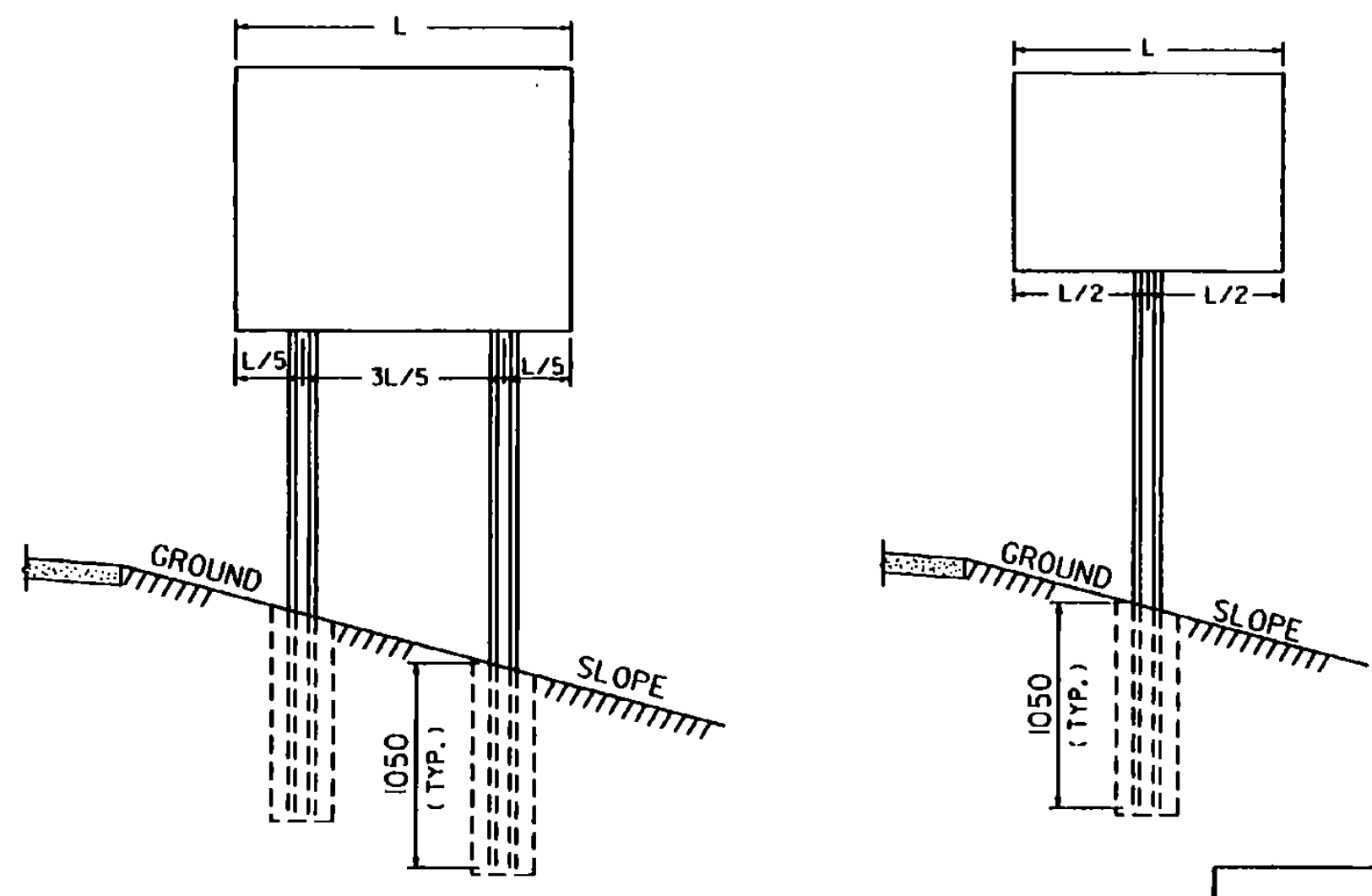
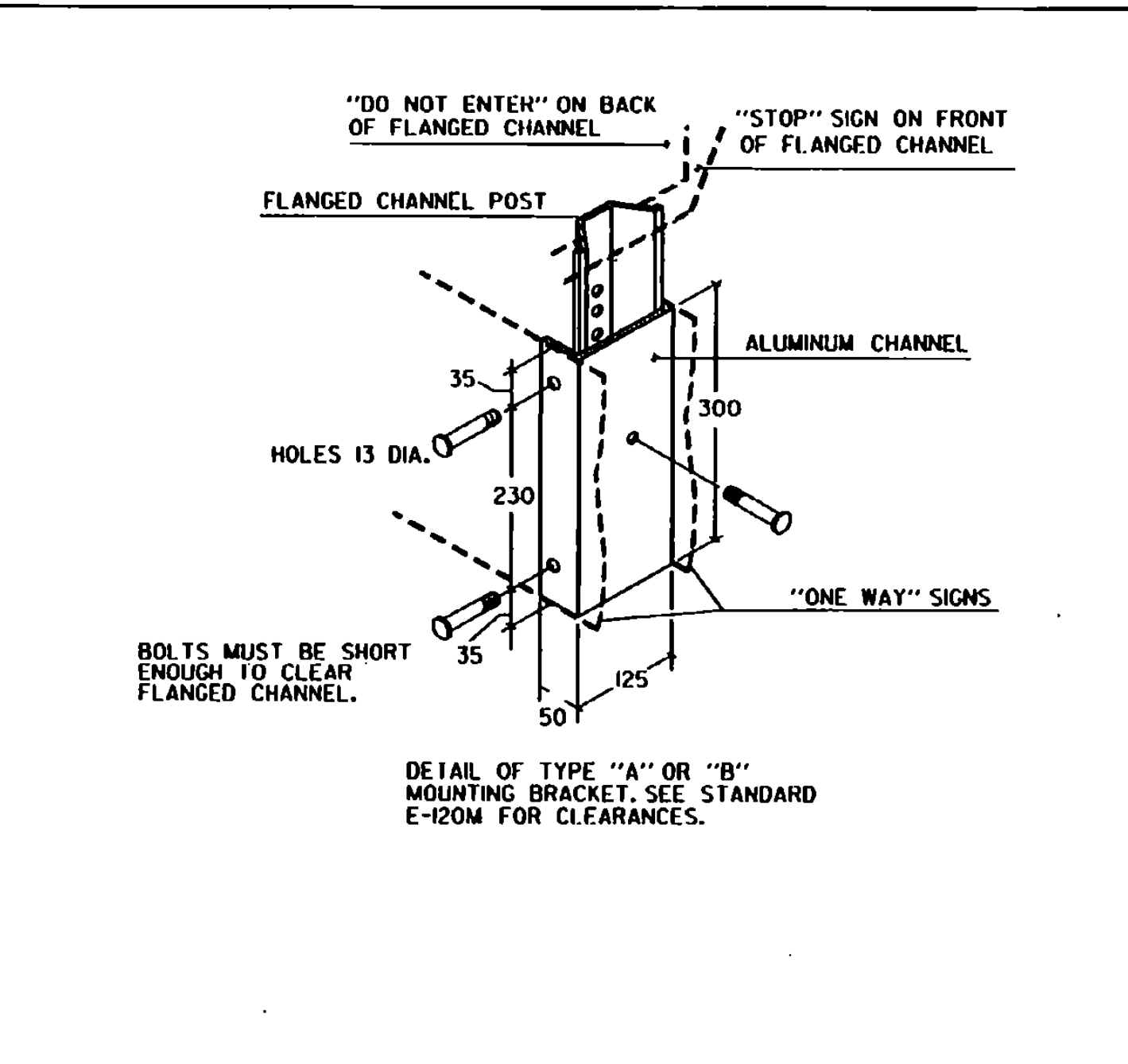
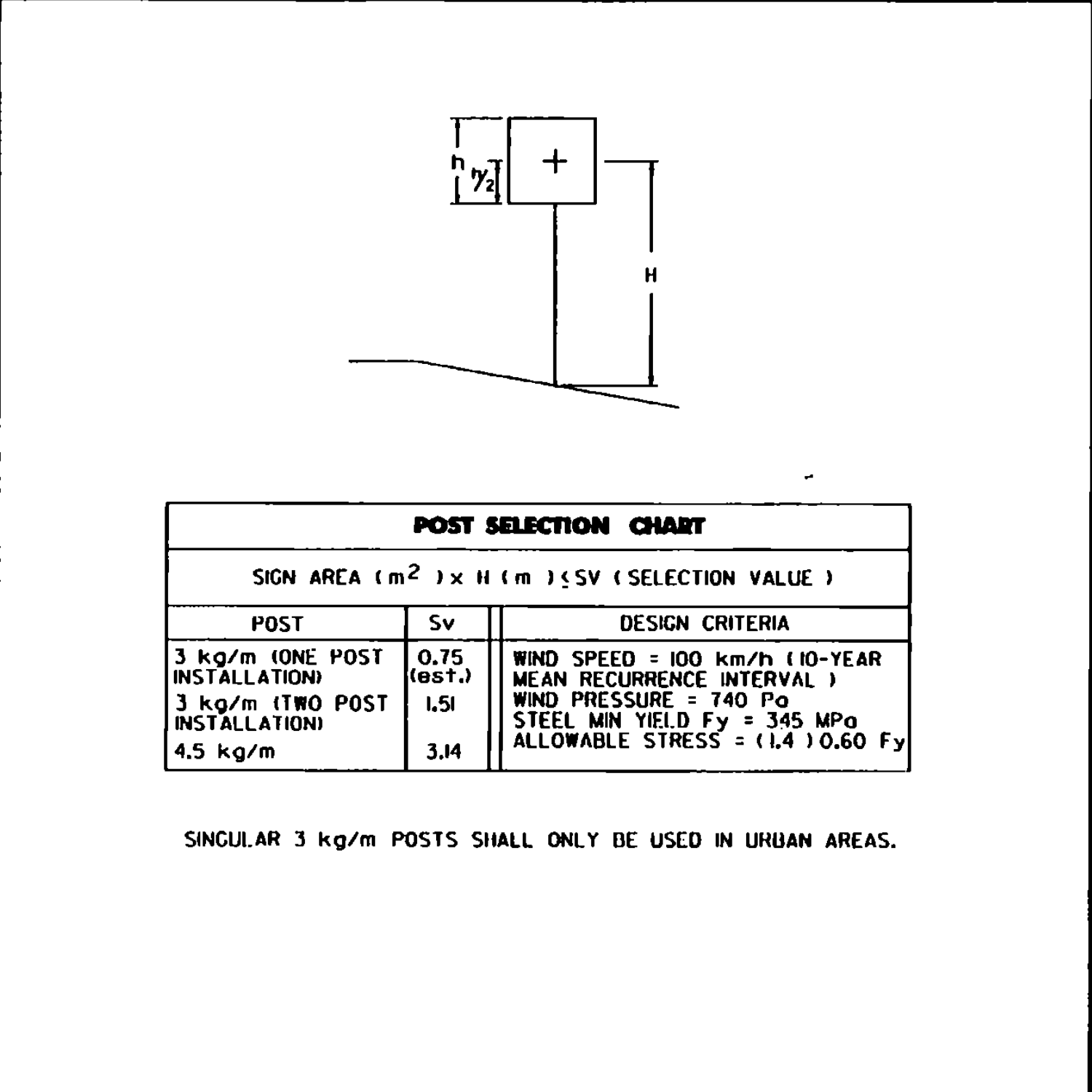


**MULTI-POST INSTALLATIONS**

WHEN SIGN POSTS ARE INSTALLED WITH A POST SPACING OF LESS THAN 2400 mm, POST SIZES MUST BE SELECTED TO INSURE THAT, WHEN ACTING TOGETHER, THE POSTS DO NOT CREATE A HAZARD. REFER TO VAO1 SIGN POST DESIGN GUIDELINE FOR ADDITIONAL DETAILS.

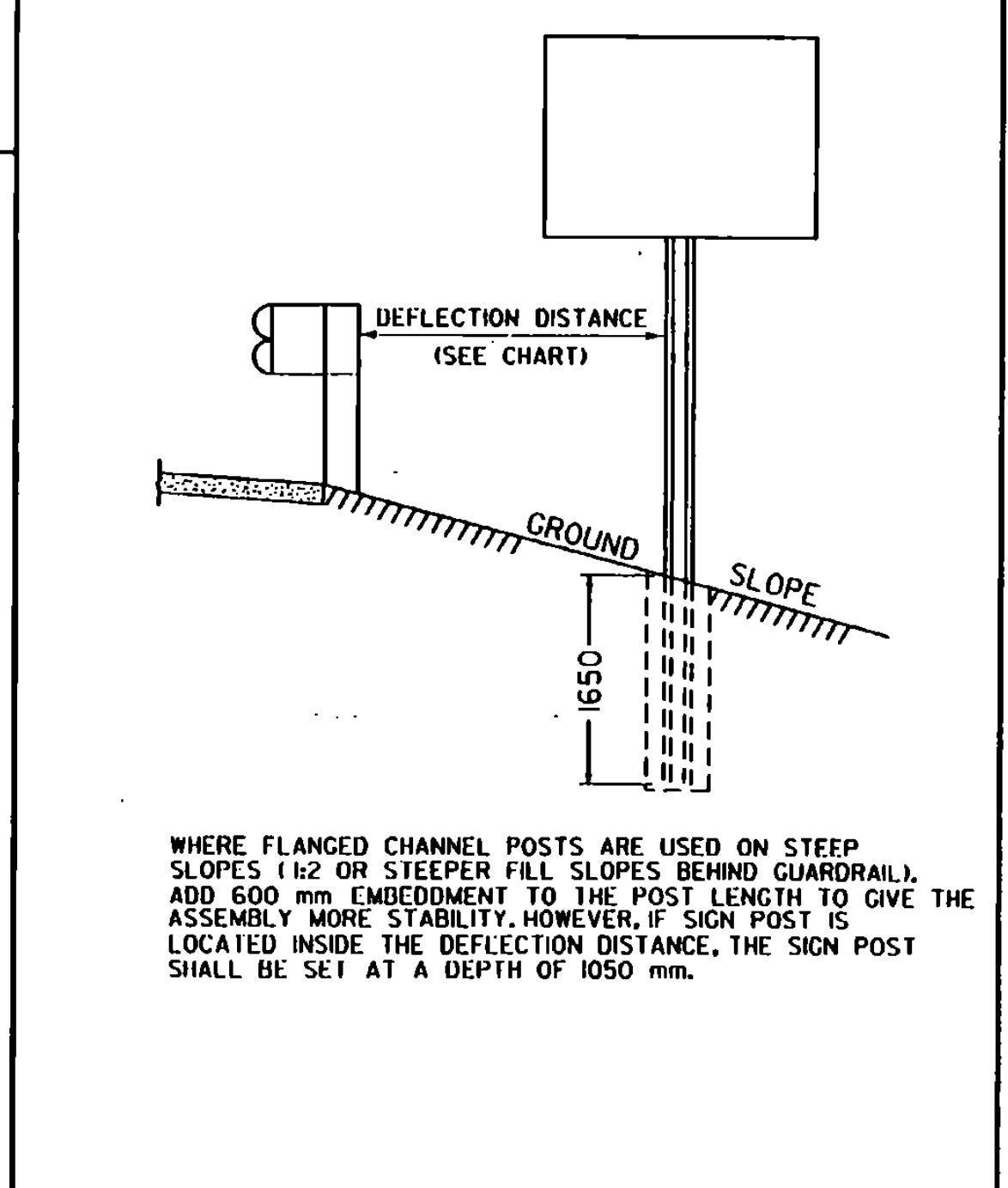


**POST SPACING DETAILS**



GUARDRAIL DEFLECTION CHART (PER AASHTO - ROADSIDE DESIGN GUIDE)		
TYPE	GR POST SPACING	DEFLECTION
THREE CABLE W/STEEL POSTS	5.0 m	3.5 m
W-BEAM W/WEAK POST	3.8 m	2.0 m
W/STRONG POST	1.9 m	0.9 m
BOX BEAM	1.83 m	1.5 m
THREE BEAM W/WEAK POST	3.8 m	1.2 m
W/STRONG POST	1.9 m	0.6 m

THIS CHART LISTS THE THEORETICAL DEFLECTION DISTANCE UPON IMPACT OF VARIOUS GUARDRAIL WITH DIFFERENT TYPES AND SPACING OF POSTS.



**GENERAL NOTES**

CONSTRUCTION METHODS - POSTS MAY BE DRIVEN OR SET IN A DUG HOLE AND BACKFILLED. IF DRIVEN, A DRIVING CAP SHALL BE USED. THE DUG-HOLE INSTALLATION SHALL BE USED IN AREAS OF POOR SOIL CONDITIONS OR AS DIRECTED BY THE RESIDENT ENGINEER. BACKFILL SHALL BE COMPACTED AS DIRECTED BY THE RESIDENT ENGINEER.

IN AREAS WHERE LEDGE ROCK IS ENCOUNTERED, POSTS WILL BE SET IN A HOLE WITH 50-mm CLEARANCE AND GROUTED WITH TYPE 4 MORTAR 600 mm BELOW THE SURFACE OF THE SOLID ROCK, UNLESS THE POSTS PENETRATE THE GROUND A MINIMUM OF 1050 mm. THE PORTION OF THE POST IN CONTACT WITH THE MORTAR SHALL BE COATED WITH AN APPROVED COATING.

SIGN CLEARANCES - HORIZONTAL AND VERTICAL SIGN CLEARANCES SHALL BE SHOWN ON THE PLANS OR THE APPROPRIATE STD. SHEETS.

SINGLE POST INSTALLATIONS SHALL BE LIMITED TO A SIGN AREA OF 1.25 m<sup>2</sup> OR LESS.

REVISIONS AND CORRECTIONS  
JUNE 13, 1997 - ORIGINAL APPROVAL DATE

APPROVED  
*[Signature]*  
DIRECTOR OF ENGINEERING  
*[Signature]*  
DIRECTOR OF CONSTRUCTION AND MAINTENANCE

**FLANGED CHANNEL STEEL SIGN POST**

OTHER STDS. E-120M REQUIRED:  
NOTE: ALL DIMENSIONS ARE IN MILLIMETERS (mm) EXCEPT WHERE NOTED.

**Metric STANDARD E-160M**