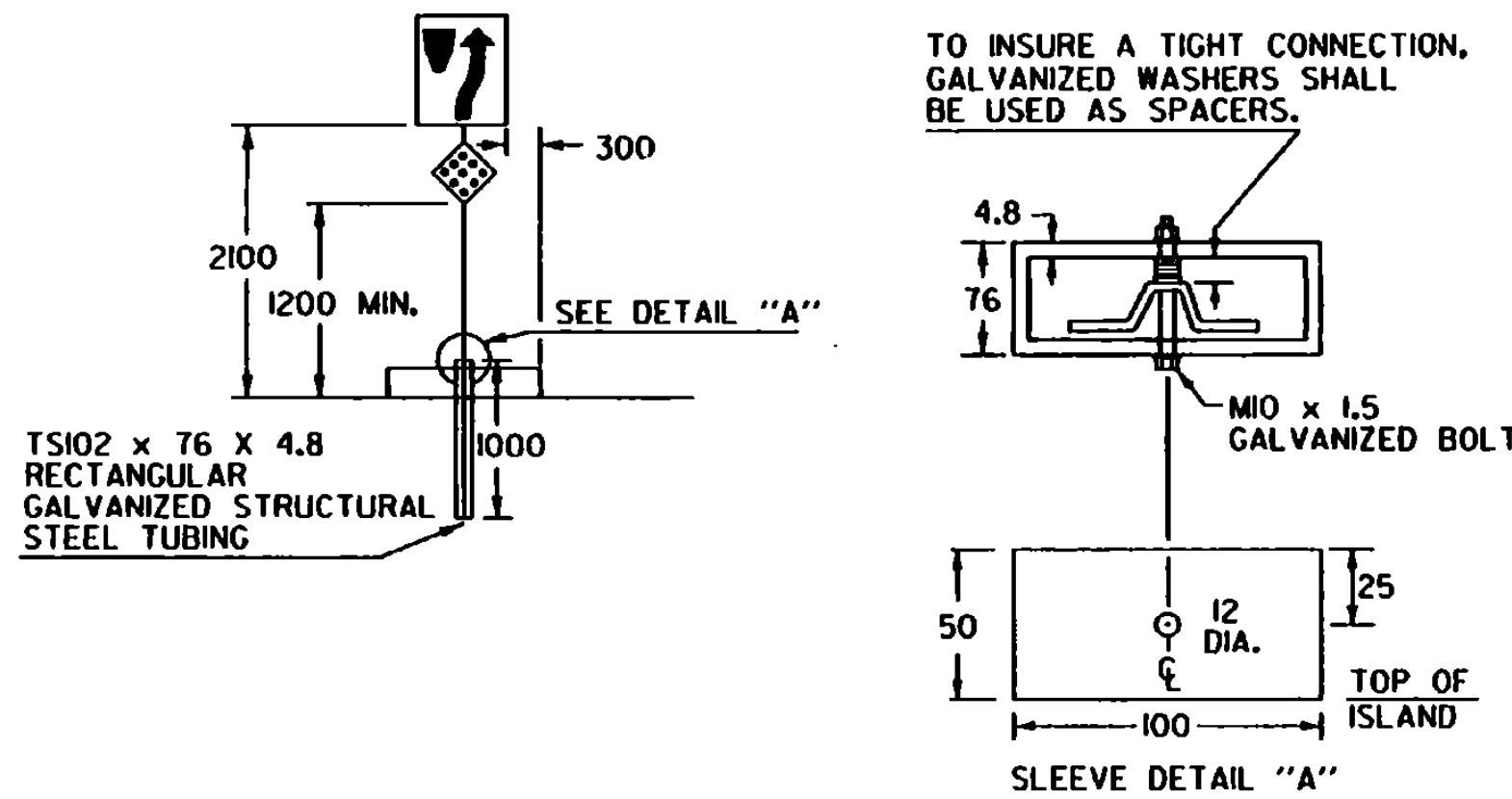
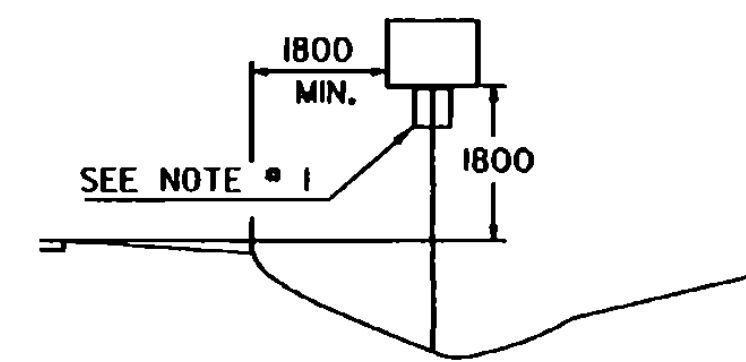
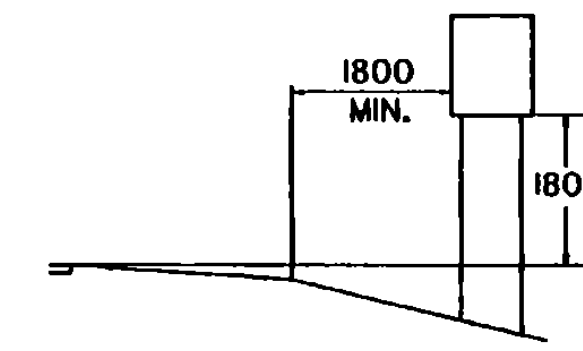


LEGAL LOAD LIMIT AND STOP SIGNS AT INTERSECTIONS WITH TOWN HIGHWAYS

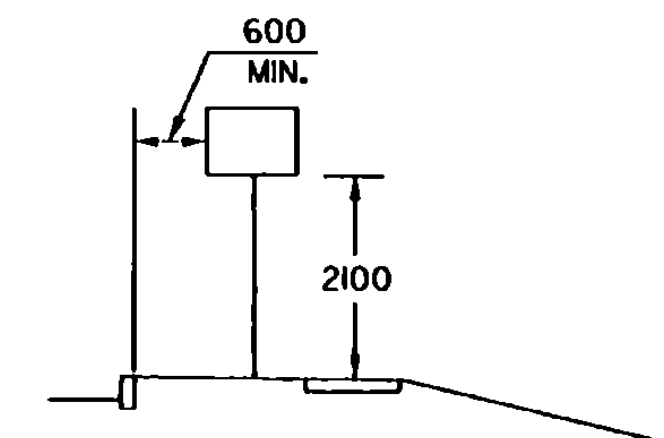
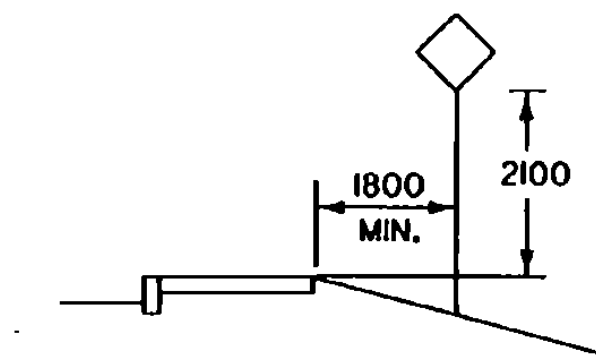
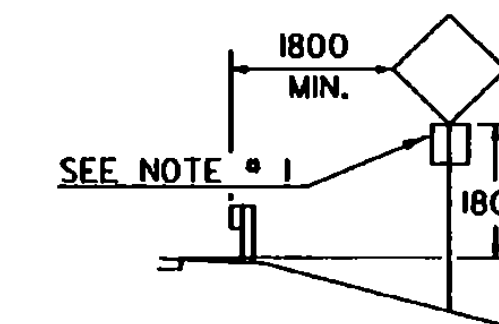


SIGNS ON MEDIAN ISLANDS IN THE LINE OF TRAFFIC

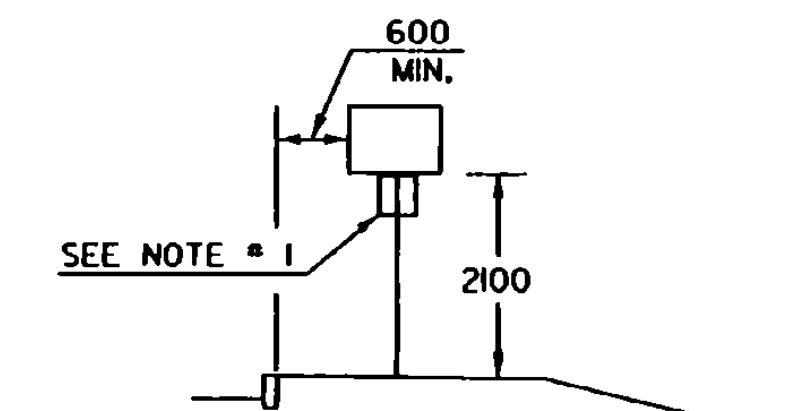
INCREASE VERTICAL CLEARANCE TO 2.1m IN AREAS OF FREQUENT ROADSIDE PARKING OR PEDESTRIAN ACTIVITY.



RURAL



IF SUFFICIENT CLEARANCE IS NOT AVAILABLE BETWEEN CURB AND SIDEWALK, MOUNT SIGN BEHIND SIDEWALK AS SHOWN AT TOP. CHECK FOR ADEQUATE RIGHT-OF-WAY.



URBAN

NOTES:

1. IN BOTH RURAL AND URBAN LOCATIONS, IF A SECONDARY SIGN IS MOUNTED BELOW ANOTHER SIGN, THE MINIMUM CLEARANCE MAY BE REDUCED BY 300 mm.
 2. IN RURAL AREAS WITH NO OR MINIMAL SHOULDER, THE LATERAL CLEARANCE TO THE EDGE OF A SIGN SHOULD BE A MINIMUM OF 3.6 m FROM THE EDGE OF THE TRAVELED WAY.
 3. ALSO SEE OTHER STANDARD SHEETS FOR MOUNTING CLEARANCE AND SPACING OF DESTINATION AND ROUTE MARKER ASSEMBLIES AND TOWN LINE SIGNS.
- POST REFERENCE:
REFER TO THE DETAILS ON THE APPROPRIATE STANDARD DRAWING FOR INFORMATION CONCERNING THE PROPER MOUNTING OF SIGNS ON APPROPRIATE POSTS.

OTHER STDS. E-160M E-162M E-164M
REQUIRED: E-161M E-163M

NOTE: ALL DIMENSIONS ARE IN MILLIMETERS (mm) EXCEPT WHERE NOTED.

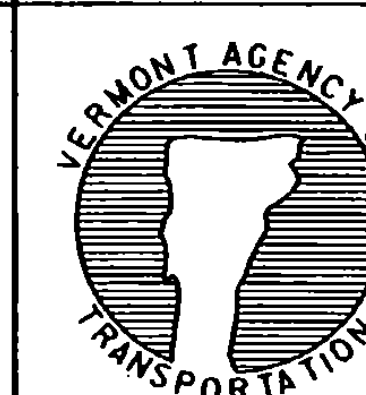
REVISIONS AND CORRECTIONS
JUNE 13, 1997 - ORIGINAL APPROVAL DATE

APPROVED

Paul C. Evans
DIRECTOR OF ENGINEERING

Stephen S. MacArthur
DIRECTOR OF CONSTRUCTION AND MAINTENANCE

**STANDARD SIGN PLACEMENT
CONVENTIONAL ROAD**



**Metric
STANDARD
E-121M**