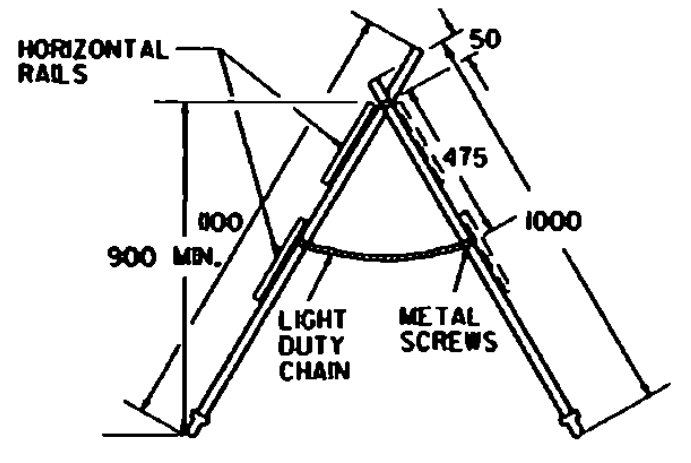


- MATERIALS FOR TYPE I AND II BARRICADES**
- 6 m - DN25 PVC
 - 4 - DN25 PVC 90° ELBOWS
 - 750 mm - DN15 THINWALL PVC CONDUIT
 - 900 mm - 6-mm STEEL ROD
 - 4 - M24 WASHERS
 - 600 mm - LIGHT DUTY CHAIN
 - M6 x 1 x 14 PAN HEAD METAL SCREWS (AS REQUIRED)
 - 2 - M20 COTTER PINS
 - 2 OR 4 - 200 OR 300 X 900 X 0.64 BARRICADE RAILS (AS REQUIRED)



MATERIALS

THE PIPE, WYES, TEES AND ELBOWS USED TO CONSTRUCT BARRICADES SHALL CONFORM TO THE REQUIREMENTS OF ASTM D 2241 FOR PVC 120 OR PVC 1220, SDR-21, PRESSURE RATING 1380 KPa. THE WYES, TEES AND ELBOWS SHALL CONFORM TO THE REQUIREMENTS OF ASTM D 2466, TYPE II, GRADE I. ALL JOINTS SHALL BE SLIP-FIT AND MAY BE LIGHTLY CEMENTED. THE BARRICADE RAILS SHALL BE FABRICATED FROM 0.64-mm ANODIZED ALUMINUM AND SHALL HAVE REFLECTORIZED ALTERNATING ORANGE AND WHITE STRIPES (SLOPING DOWNWARD AT AN ANGLE OF 45° IN THE DIRECTION TRAFFIC IS TO PASS).

MAINTENANCE

BARRICADES SHALL BE MAINTAINED IN CLEAN AND LEGIBLE CONDITIONS SATISFACTORY TO THE ENGINEER. THEY SHALL BE COMPLETELY VISIBLE TO APPROACHING TRAFFIC AT ALL TIMES. DAMAGED, DEFACED OR DIRTY BARRICADES SHALL BE REPAIRED, CLEANED OR REPLACED AS ORDERED BY THE ENGINEER. THE PVC PIPE AND FITTINGS SHALL BE WHITE IN COLOR. AT LEAST TWO (2) HOLES SHALL BE DRILLED (5 mm DIAM.) IN EACH SECTION OF PIPE AND FITTINGS IF THE ASSEMBLY IS NOT CEMENTED.

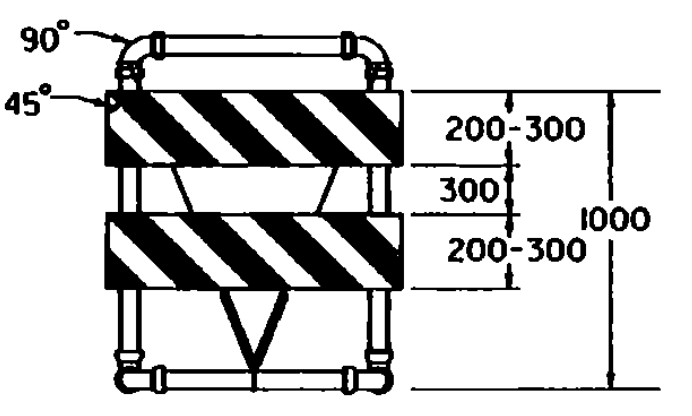
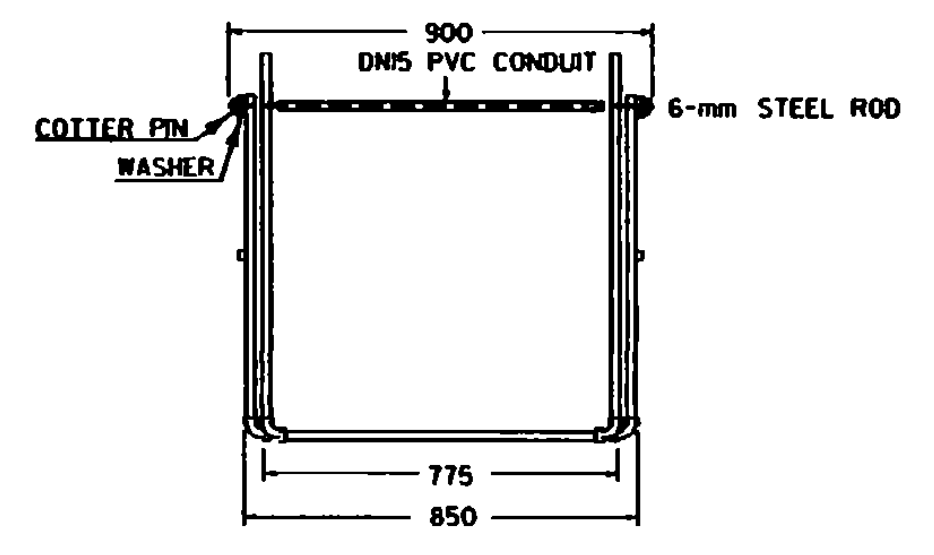
BARRICADES SHALL BE STABILIZED WITH SAND BAGS OF MINIMUM MASS WHICH WILL NOT CONSTITUTE A HAZARD IF THE BARRICADE IS HIT. THESE SHALL BE PLACED ONLY ON THE FRONT AND REAR PIPES OF THE BASE FRAME OF THE BARRICADE. SAND BAG STABILIZERS SHALL BE SO PLACED AS NOT TO A HAZARD TO VEHICLES PASSING ON EITHER SIDE. GLUED JOINTS MAY PROVIDE ADDITIONAL STABILITY TO THE INSTALLATION.

TYPE I BARRICADES SHALL UTILIZE ONE HORIZONTAL RAIL IN EACH DIRECTION. TYPE II BARRICADES SHALL BE A TYPE I BARRICADE WITH AN ADDITIONAL HORIZONTAL RAIL MOUNTED BELOW THE OTHER IN EACH DIRECTION.

TYPE III BARRICADES (MODIFIED) SHALL CONSIST OF THE BREAKAWAY DNT5 PVC DESIGN SHOWN ON THIS SHEET WITH THE TWO-RAIL LAYOUT DETAILED ABOVE LEFT.

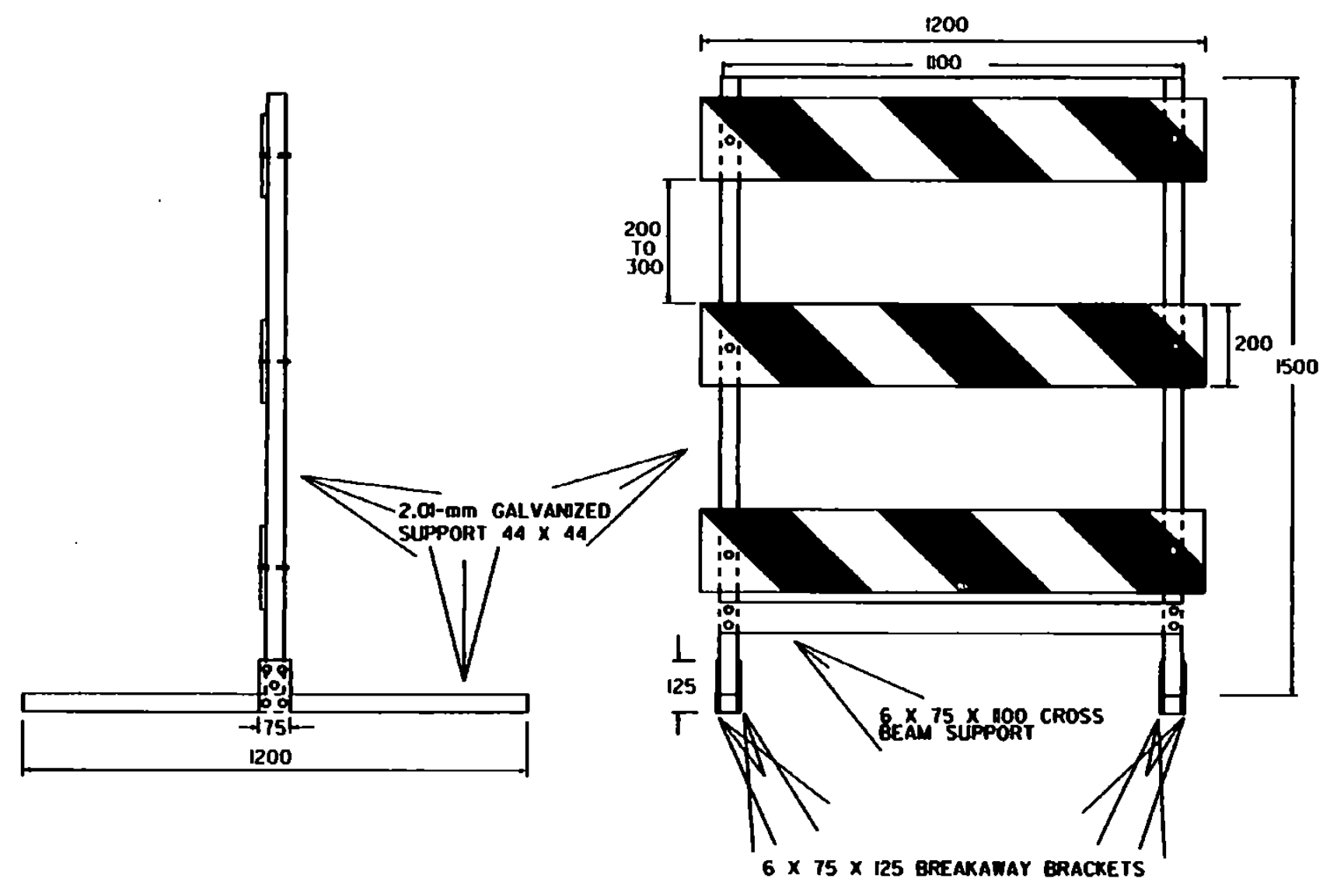
SEE STD E-107M FOR ADDITIONAL INFORMATION.

- MATERIALS FOR TYPE III BARRICADES**
- 9 m - DNT5 PVC PIPE
 - 6 - DNT5 90° ELBOWS
 - 2 - DNT5 TEES
 - 4 - DNT5 WYES
 - 3 - 200 OR 300 X 1200 X 0.64 BARRICADE RAILS
 - 2 - 16 X 280, 4.8-mm SPRINGS (IF ASSEMBLY IS NOT CEMENTED)
 - 12 - M6 x 1 x 25 PAN HEAD METAL SCREWS
 - 4.5 m - 2.03-mm BLACK ANNEALED TIE WIRE (IF ASSEMBLY IS NOT CEMENTED)

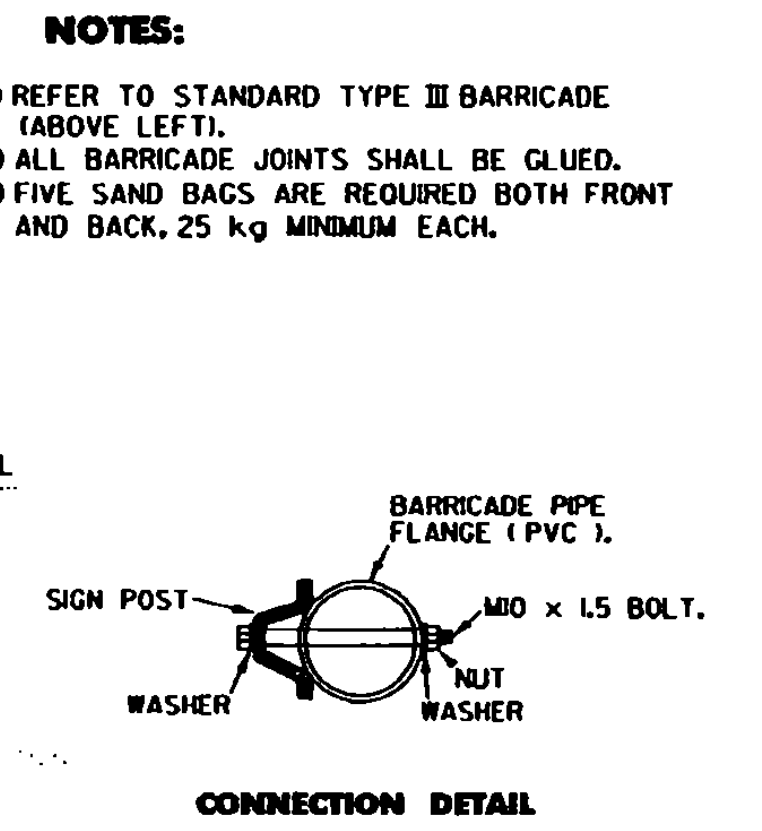
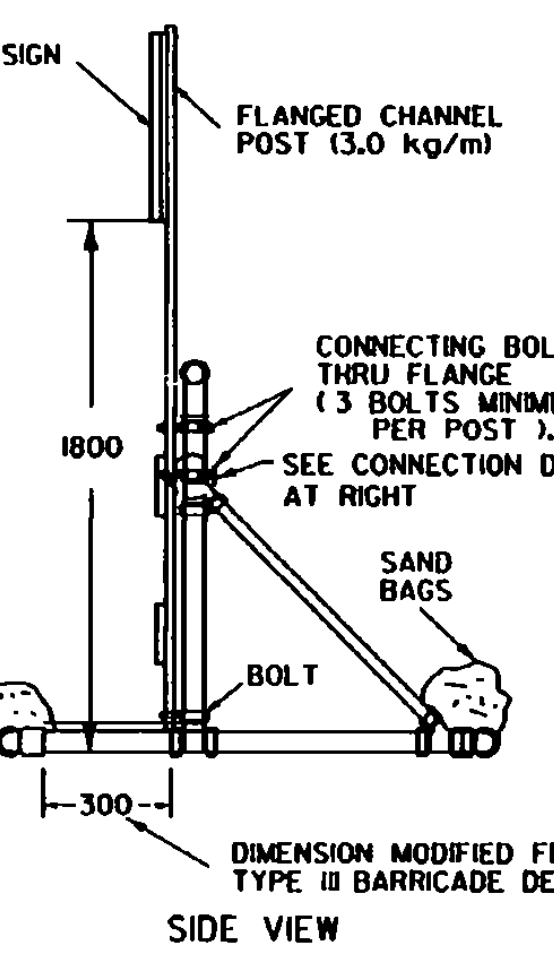
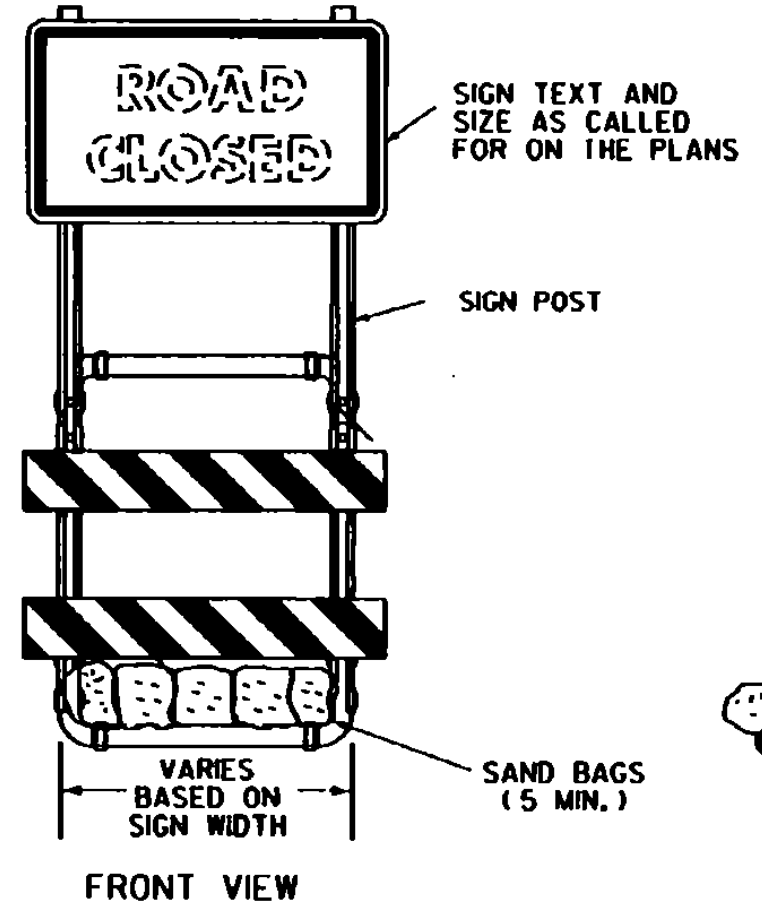


TYPE III (MODIFIED) BARRICADE
(STRIPING IS SHOWN WITH TRAFFIC PASSING TO THE RIGHT).

- MATERIALS FOR METAL TYPE III BARRICADES**
- PANELS (3):
200 X 1200 GALVANIZED STEEL...COVERED (OR 2 SIDES WITH WHITE/ORANGE, DIAGONALLY STRIPED REFLECTIVE SHEETING)
- VERTICAL SUPPORTS (2): 2.01-mm GALVANIZED TUBING 44 X 44 X 1500
- HORIZONTAL SUPPORTS (2): 2.01-mm GALVANIZED TUBING 44 X 44 X 1200
- CROSS BEAM SUPPORT (1): COLD GALVANIZED STEEL 6 X 75 X 800
- BREAKAWAY BRACKETS (4): COLD GALVANIZED STEEL 6 X 75 X 125
- FASTENERS:
6 - SHEAR BOLTS WITH LOCK NUTS M6 X 1 X 70
4 - FULCRUM BOLTS WITH LOCK NUTS M10 X 1.5 X 70
4 - FASTENER BOLTS WITH LOCK NUTS M10 X 1.5 X 70
6 - PANEL BOLTS WITH LOCK NUTS AND WASHERS M6 X 1 X 50
- ALL FASTENERS GALVANIZED STEEL. ALL BOLTS HEX HEAD.



SIDE AND FRONT VIEW OF TYPE III METAL BARRICADE



SIGN MOUNTING ON TYPE III BARRICADE (MODIFIED)

- NOTES:**
- REFER TO STANDARD TYPE III BARRICADE (ABOVE LEFT).
 - ALL BARRICADE JOINTS SHALL BE GLUED.
 - FIVE SAND BAGS ARE REQUIRED BOTH FRONT AND BACK, 25 kg MINIMUM EACH.

OTHER STDS. E-107M REQUIRED:
NOTE: ALL DIMENSIONS ARE IN MILLIMETERS (mm) EXCEPT WHERE NOTED.

REVISIONS AND CORRECTIONS
JUNE 13, 1997 - ORIGINAL APPROVAL DATE

APPROVED
[Signature]
DIRECTOR OF ENGINEERING
[Signature]
DIRECTOR OF CONSTRUCTION AND MAINTENANCE

BREAKAWAY BARRICADE DETAILS

Metrix
STANDARD
E-107AM