

REMOVAL AND DISPOSAL OF GUARD RAIL

STA. I+078.4 LT. TO STA. I+086.0 LT.
 STA. I+124.4 LT. TO STA. I+132.0 LT.
 STA. I+124.4 RT. TO STA. I+130.0 RT.

HEAVY DUTY STEEL BEAM GUARD RAIL W/ WOOD POSTS, TYPE IV

STA. I+067.0 RT. TO STA. I+086.0 RT.
 STA. I+078.4 LT. TO STA. I+086.0 LT.
 STA. I+124.4 RT. TO STA. I+132.0 RT.
 STA. I+124.4 LT. TO STA. I+135.8 LT.

ANCHOR FOR STEEL BEAM RAIL

STA. I+068.9 RT.
 STA. I+080.3 LT.
 STA. I+130.1 LT.
 STA. I+133.9 RT.

REMOVING SIGNS

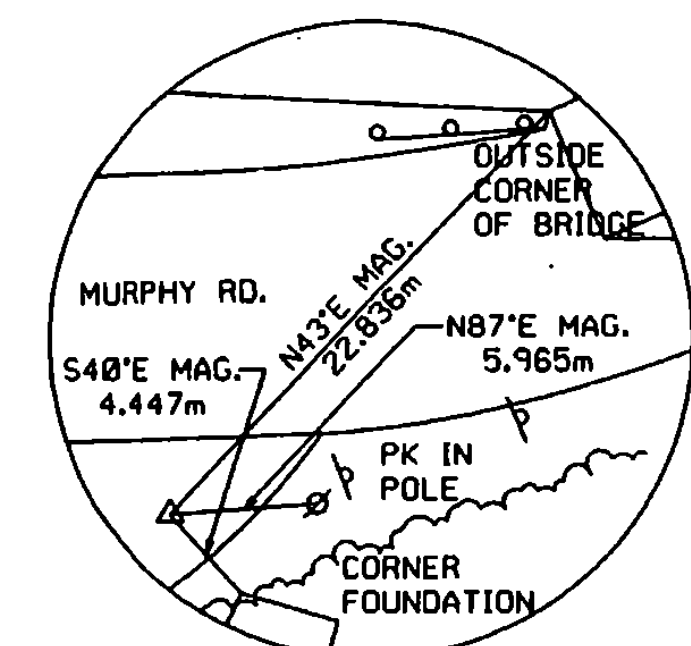
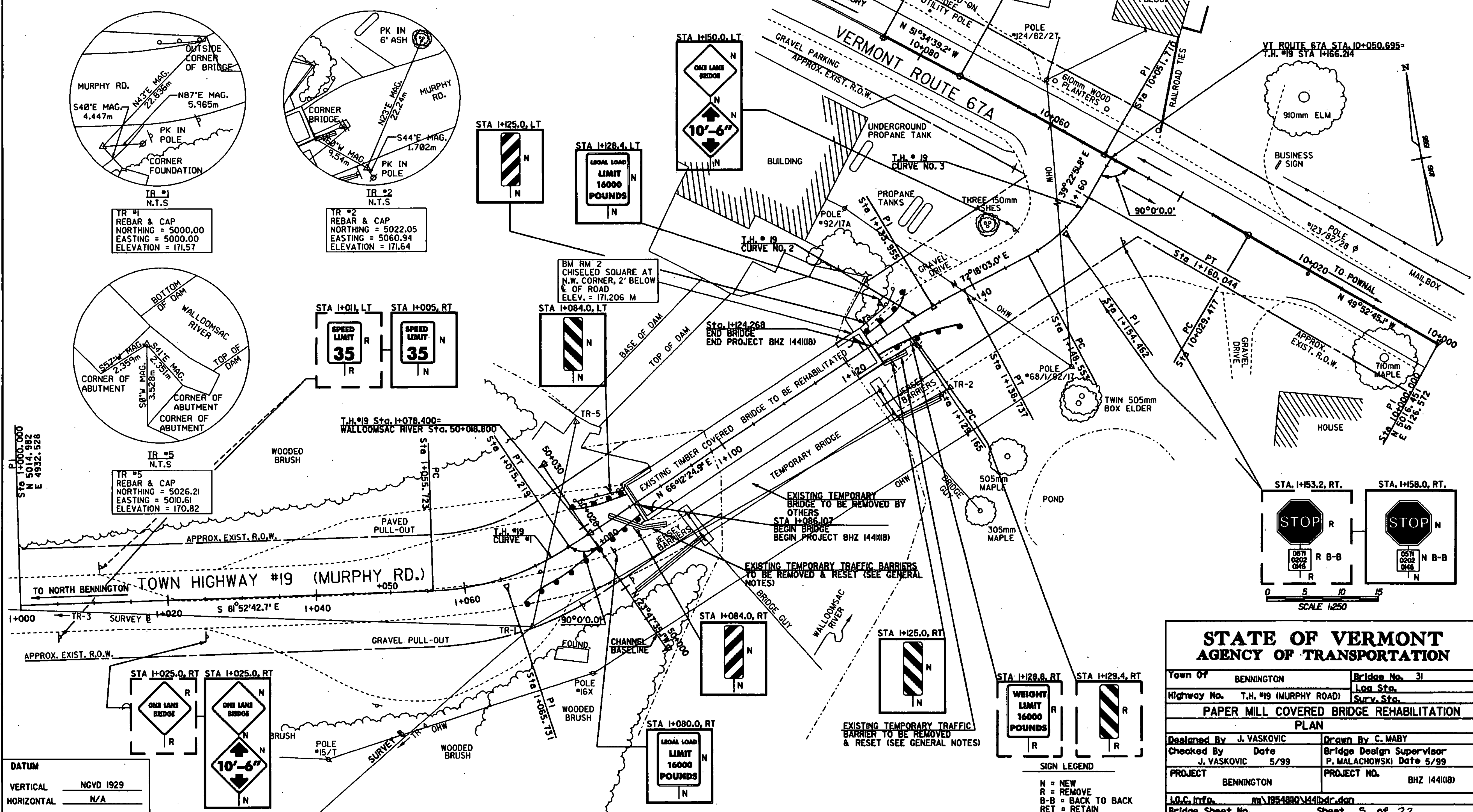
AS SHOWN - 4

T.H. # 19 CURVE DATA CURVE NO. 1
PI Sta I+065.731 N 5005.696 E 4992.600 Δ = 3°54'52.8" LT R = 35.000 m T = 10.008 m L = 19.496 E = 1.403

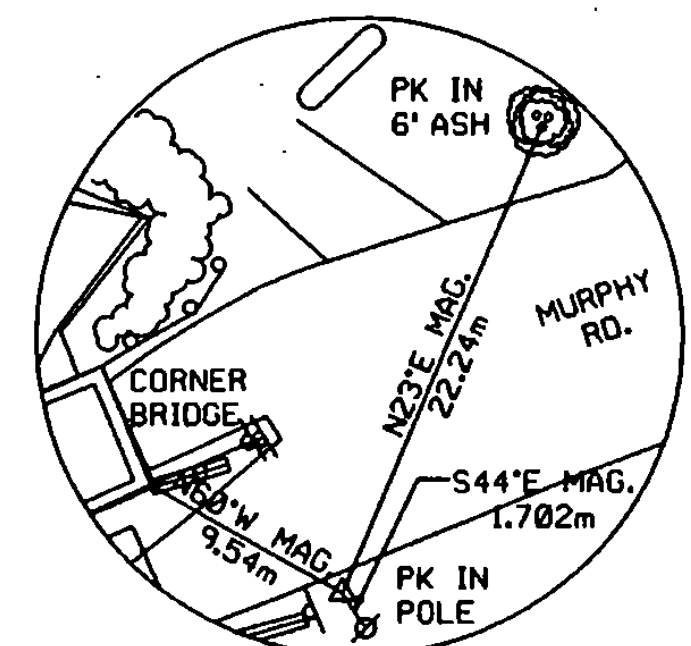
T.H. # 19 CURVE DATA CURVE NO. 2
PI Sta I+133.955 N 5033.430 E 5060.502 Δ = 6°05'58.4" RT R = 30.000 m T = 5.909 m L = 9.572 E = 0.227

T.H. # 19 CURVE DATA CURVE NO. 3
PI Sta I+154.462 N 5039.667 E 5080.046 Δ = 32°55'11.2" LT R = 20.000 m T = 22.233 m L = 11.491 E = 0.855

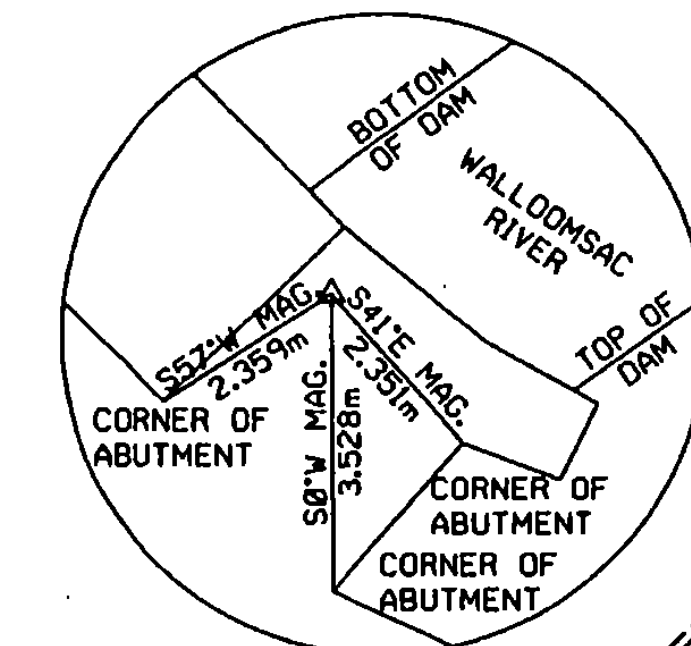
VT RTE 67A CURVE DATA CURVE NO. 1
PI Sta I+051.710 N 5049.773 E 5087.030 Δ = 1°41'54.1" LT R = 1500.000 m T = 22.233 m L = 44.463 E = 0.165



TR #1
N.T.S.
REBAR & CAP
NORTHING = 5000.00
EASTING = 5000.00
ELEVATION = 171.57



TR #2
N.T.S.
REBAR & CAP
NORTHING = 5022.05
EASTING = 5060.94
ELEVATION = 171.64



TR #5
N.T.S.
REBAR & CAP
NORTHING = 5026.21
EASTING = 5010.61
ELEVATION = 170.82

DATUM	NGVD 1929
VERTICAL	N/A
HORIZONTAL	N/A

WEIGHT LIMIT 16000 POUNDS
SIGN LEGEND
N = NEW
R = REMOVE
B-B = BACK TO BACK
RET = RETAIN

**STATE OF VERMONT
AGENCY OF TRANSPORTATION**

Town Of	BENNINGTON	Bridge No.	31
Highway No.	T.H. #19 (MURPHY ROAD)	Loc. Sta.	
PAPER MILL COVERED BRIDGE REHABILITATION			
PLAN			
Designed By	J. VASKOVIC	Drawn By	C. MABY
Checked By	Date	Bridge Design Supervisor	Date
J. VASKOVIC	5/99	P. MALACHOWSKI	5/99
PROJECT	BENNINGTON	PROJECT NO.	BHZ (144)(B)
I.G.C. Info.	m:\195488Q\144\brd.dwg		
Bridge Sheet No.	Sheet 5 of 22		

14-MAY-1999