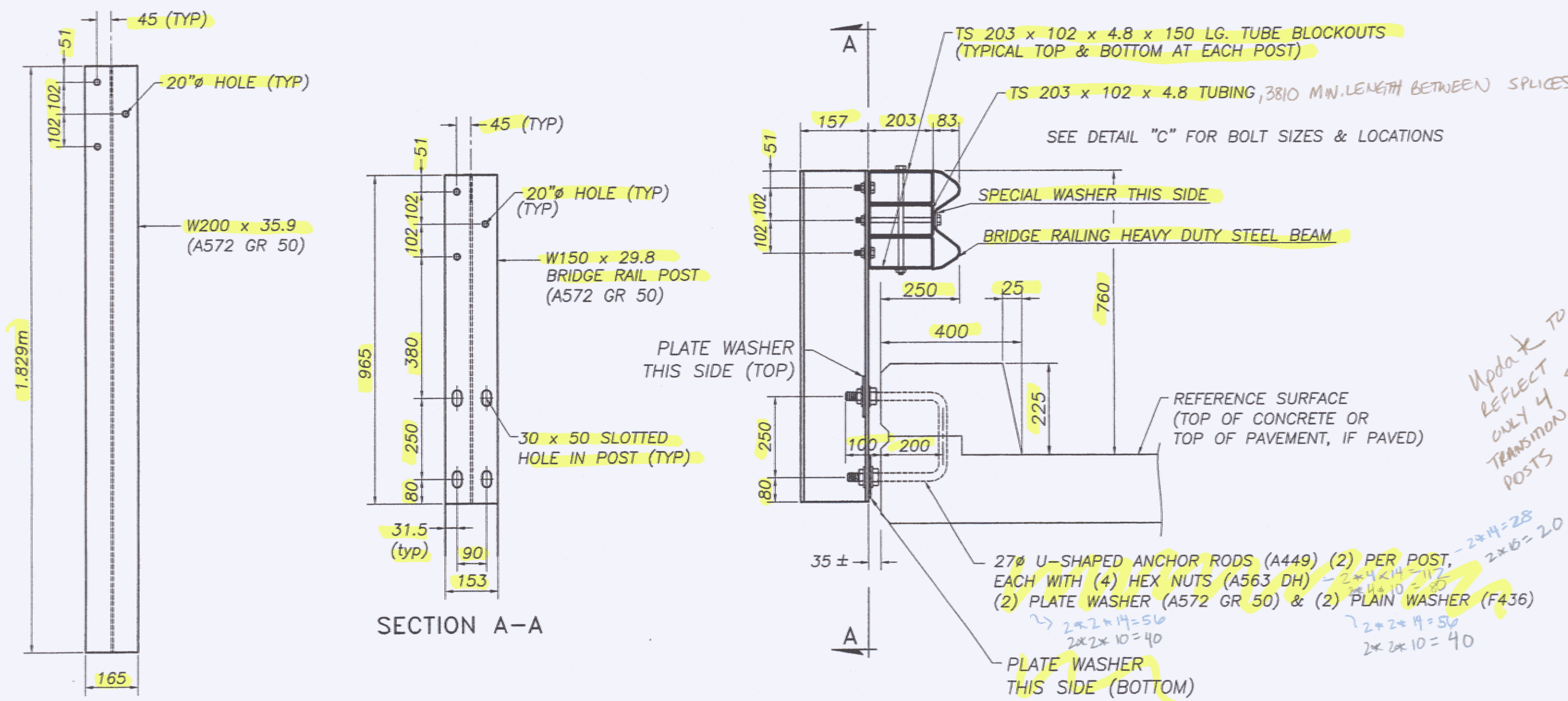


# BRIDGE # 16

# BRIDGE # 17

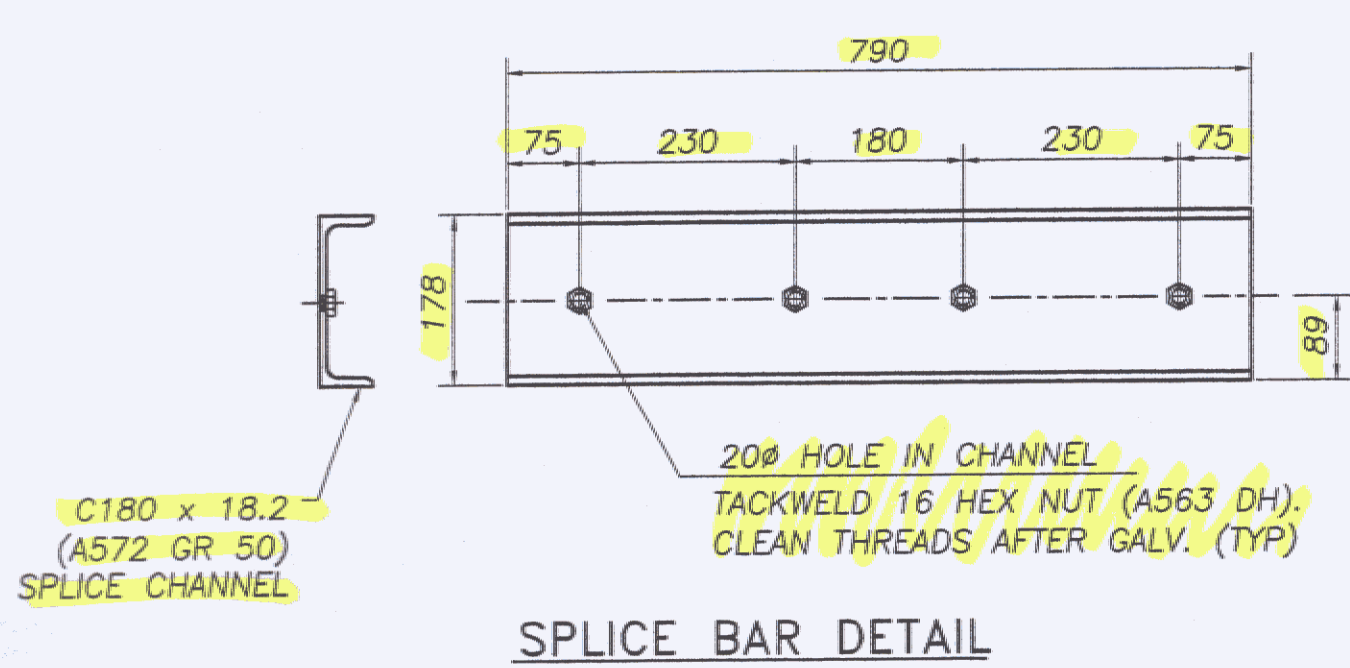


FASCIA MOUNTED POST WITH CURB  
W150x29.8 (A572 GR 50)

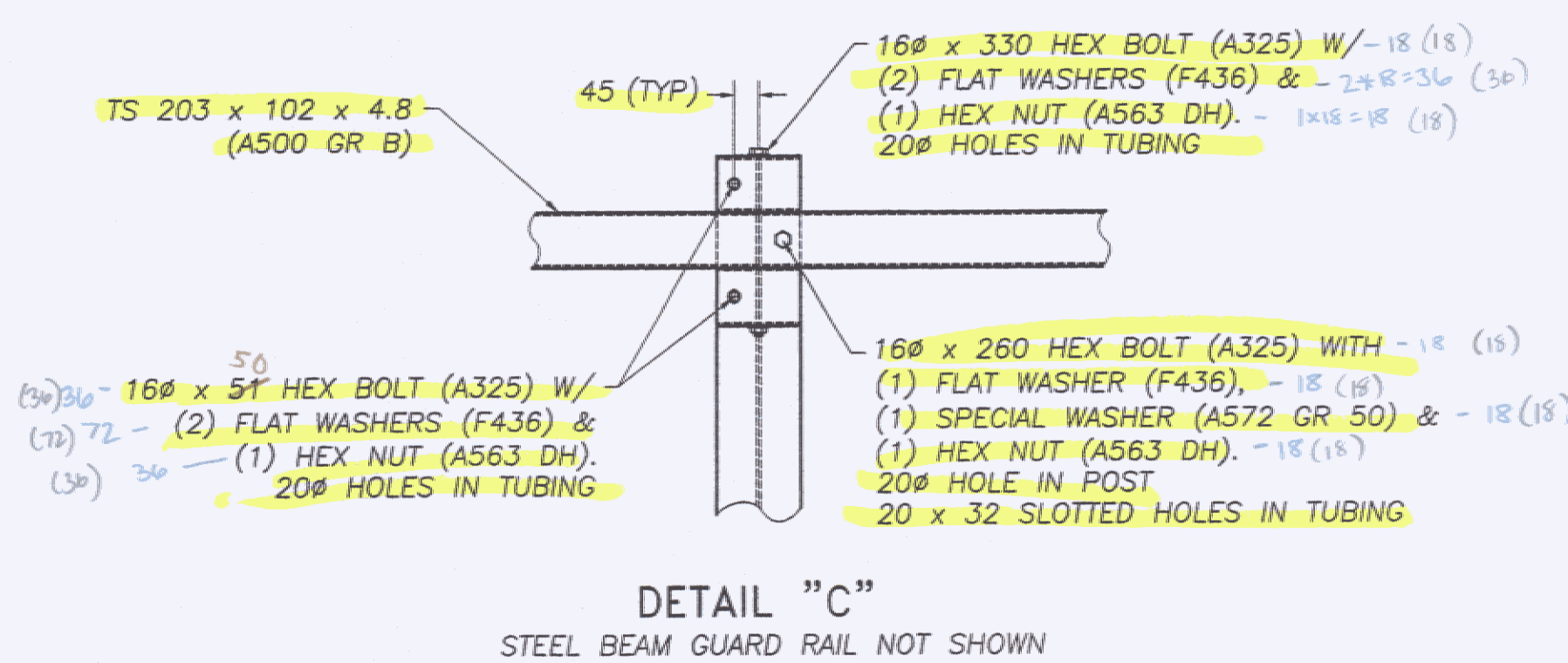
TRANSITION POST  
W200x35.9 (A572 GR 50)

Mk.	Qty.	Description	Material
14		FASCIA MOUNTED POST W150x29.8 (965mm OAL)	A572 gr 50
4	8	TRANSITION POST W200x35.9 (1.829m OAH)	A572 gr 50
4		SPLICE CHANNEL C180x18.2 (790mm OAL)	A572 gr 50
36	44	TUBE BLOCKOUTS TS 203x102x4.8 (150 Lg.)	A500 gr B
1	1	TS 203x102x4.8 (3.461m OAL) 122m convex RADIUS	A500 gr B
2	1	TS 203x102x4.8 (7.595m OAL) 122m convex RADIUS	A500 gr B
3	1	TS 203x102x4.8 (4.401m OAL) 122m convex RADIUS	A500 gr B
4	1	TS 203x102x4.8 (4.401m OAL) 128m concave RADIUS	A500 gr B
5	1	TS 203x102x4.8 (7.595m OAL) 128m concave RADIUS	A500 gr B
6	1	TS 203x102x4.8 (3.461m OAL) 128m concave RADIUS	A500 gr B
8	10	Ga. HDSB RAIL (3.810m /1.905m SPACING)	A500 gr B
22		16ø x 330mm Lg. HEX BOLT (A325)	A325
44		16ø x 260mm Lg. HEX BOLT (A325)	A325
60		16ø x 51mm Lg. HEX BOLT (A325)	A325
44		RECTANGULAR WASHER 5mmx45mmx75mm	A572 gr 50
110		16ø HEX NUT	A563 DH
192		16ø ROUND WASHER	F436
64		16ø SPLICE BOLT	A307
64		16ø Dbl. RECESSED NUT	A563 A
28		U-SHAPED ANCHOR BOLT (25ø)	A449
56		PLATE WASHER (6mmx55mmx130mm)	A572 gr 50
112		25ø HEX NUT	A563 DH
56		25ø ROUND WASHER	F436

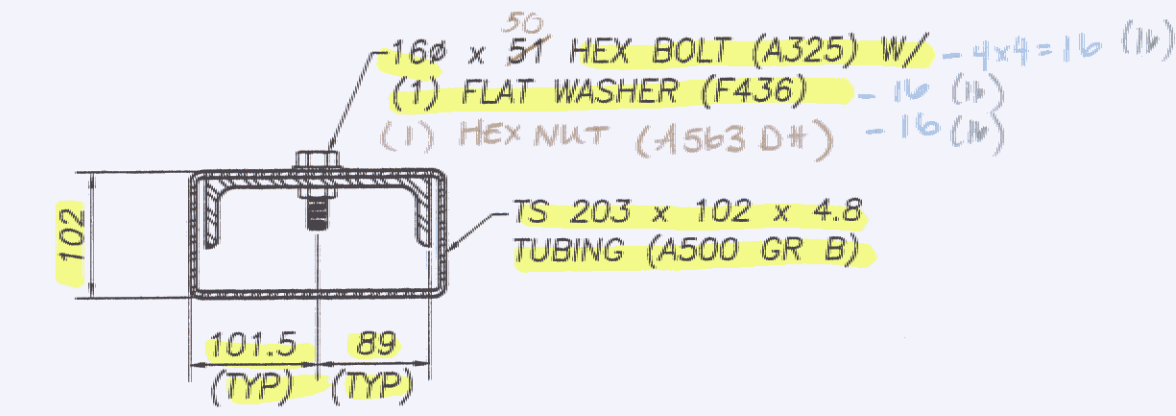
Mk.	Qty.	Description	Material
10		FASCIA MOUNTED POST W150x29.8 (965mm OAL)	A572 gr 50
8		TRANSITION POST W200x35.9 (1.829m OAH)	A572 gr 50
4		SPLICE CHANNEL C180x18.2 (790mm OAL)	A572 gr 50
36		TUBE BLOCKOUTS TS 203x102x4.8 (150 Lg.)	A500 gr B
7	1	TS 203x102x4.8 (3.461m OAL) 128m concave RADIUS	A500 gr B
8	1	TS 203x102x4.8 (5.690m OAL) 128m concave RADIUS	A500 gr B
9	1	TS 203x102x4.8 (2.496m OAL) 128m concave RADIUS	A500 gr B
10	1	TS 203x102x4.8 (2.496m OAL) 122m convex RADIUS	A500 gr B
11	1	TS 203x102x4.8 (5.690m OAL) 122m convex RADIUS	A500 gr B
12	1	TS 203x102x4.8 (3.461m OAL) 122m convex RADIUS	A500 gr B
6	10	Ga. HDSB RAIL (3.810m /1.905m SPACING)	A500 gr B
18		16ø x 330mm Lg. HEX BOLT (A325)	A325
36		16ø x 260mm Lg. HEX BOLT (A325)	A325
52		16ø x 51mm Lg. HEX BOLT (A325)	A325
36		RECTANGULAR WASHER 5mmx45mmx75mm	A572 gr 50
90		16ø HEX NUT	A563 DH
160		16ø ROUND WASHER	F436
48		16ø SPLICE BOLT	A307
48		16ø Dbl. RECESSED NUT	A563 A
20		U-SHAPED ANCHOR BOLT (25ø)	A449
40		PLATE WASHER (6mmx55mmx130mm)	A572 gr 50
80		25ø HEX NUT	A563 DH
40		25ø ROUND WASHER	F436



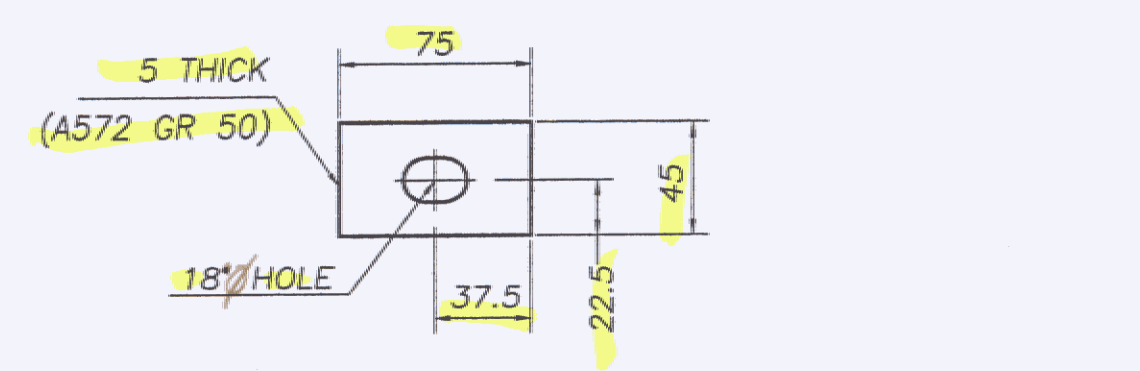
SPLICE BAR DETAIL



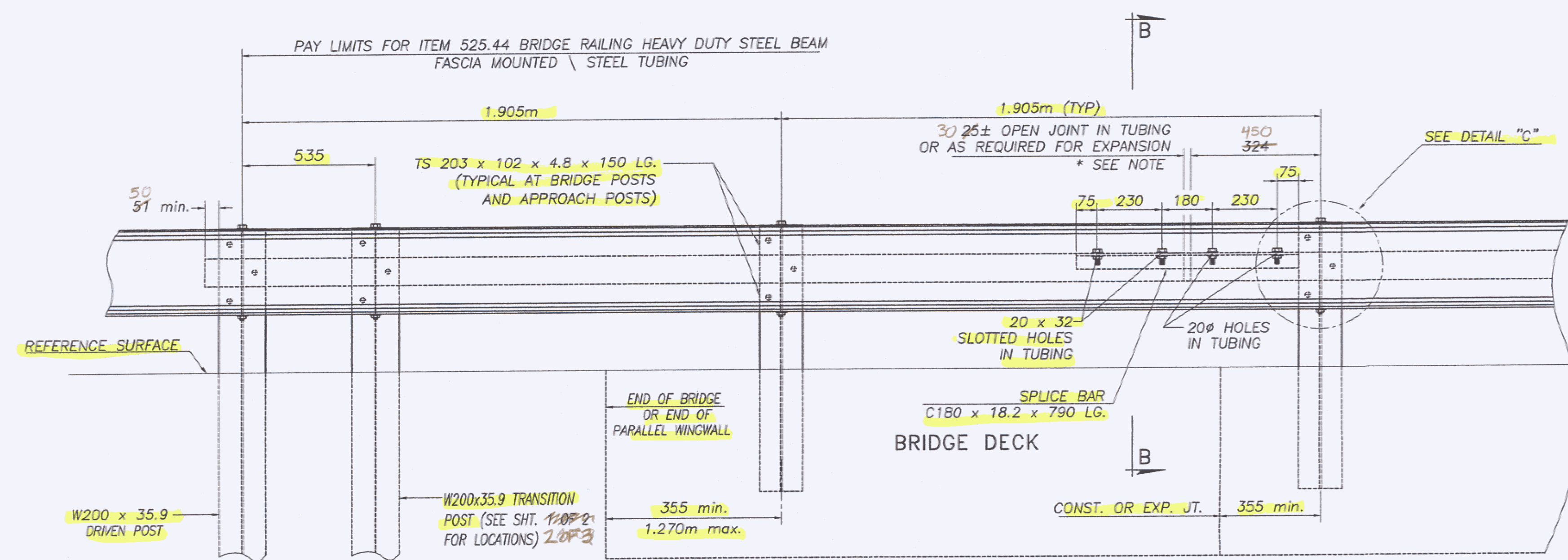
DETAIL "C"  
STEEL BEAM GUARD RAIL NOT SHOWN



PARTIAL SECTION B-B  
SHOWING TUBE & SPLICE ONLY



SPECIAL WASHER DETAIL



RAILING ELEVATION VIEW  
(SHOWN LOOKING FROM  $\phi$  WITHOUT CURB)

\* NOTE min. SPLICE OPENING WILL VARY DEPENDING ON AMOUNT OF EXPANSION REQUIRED  
BOLTS IN SLOTTED HOLES SHALL NOT BE SO TIGHT AS TO PREVENT SLIDING BETWEEN THE TUBING AND THE SPLICE CHANNEL

No.	REVISIONS	Date
0	Initial submittal	

## GENERAL ERECTION NOTES

- HEAVY DUTY STEEL BEAM GUARD RAIL SHALL CONFORM TO VAOT STD. SPECIFICATION 732.
- STRUCTURAL STEEL TUBING SHALL CONFORM TO VAOT STD. SPECIFICATION 732 AND SHALL BE GALVANIZED AFTER FABRICATION IN ACCORDANCE WITH AASHTO M111.
- ANCHOR BOLTS, NUTS AND WASHERS SHALL BE GALVANIZED IN ACCORDANCE WITH AASHTO M232 AND SHALL CONFORM TO VAOT STD. SPECIFICATION 714 UNLESS OTHERWISE NOTED.
- BRIDGE RAIL POSTS, SPECIAL WASHERS, PLATE WASHERS AND SPLICE BARS SHALL CONFORM TO AASHTO M223/M232M Gr. 345 AND SHALL BE GALVANIZED AFTER FABRICATION IN ACCORDANCE WITH AASHTO M111.
- ALL BOLTS AND RELATED HARDWARE SHALL CONFORM TO AASHTO M164M, TYPE 1 BOLTS AND SHALL BE HOT DIPPED OR MECHANICALLY GALVANIZED PER SPECIFICATION.
- SEE STANDARD DRAWING G-1M AND G-1M FOR ADDITIONAL DETAILS CONCERNING GUARDRAIL.
- SEE STANDARD DRAWINGS SB-R6-82M FOR APPROACH RAIL DETAILS AND FOR INFORMATION RELATIVE TO SCHEDULE 1 AND SCHEDULE 2. ALL APPROACH RAIL SHALL BE HEAVY DUTY STEEL BEAM GUARDRAIL. ALSO SEE STD. DRWG. SB-R6-82M FOR HANDRAIL DETAILS (EXCEPT END DETAILS) IF HANDRAIL IS REQUIRED.
- ALL POSTS SHALL BE SET NORMAL TO GRADE.
- SPLICES FOR THE STEEL BEAM GUARDRAIL SHALL LAP IN THE DIRECTION OF TRAFFIC.
- SEE STANDARD DRAWING G-1M FOR DETAILS OF DELINEATORS. A DELINEATOR SHALL BE LOCATED AT EVERY FIFTH POST. PAYMENT SHALL BE SUBSIDIARY TO OTHER ITEMS.
- A RAILING JOINT SPLICE SHALL BE PROVIDED AT EACH SUPERSTRUCTURE EXPANSION JOINT.
- ALL FIELD CUT OR DRILLED AREAS SHALL BE COATED WITH AN APPROVED SEALANT.
- FOR RADI LESS THAN 290m, THE STEEL TUBING SHALL BE SHOP BENT TO FIT THE APPLICABLE CURVE.
- THE DROP-WEIGHT TEAR TEST IN SECTION 732 SHALL NOT APPLY TO THE STRUCTURAL TUBING ON THIS STANDARD.
- PRIOR TO GALVANIZING, ALL CORNERS AND EDGES OF STEEL PLATES, SHAPES, ETC., SHALL BE GROUNDED TO A 1.6MM (1/16 INCH) RADIUS.

RECEIVED  
OK'D BY *epw*  
AUG 05 2008  
APPROVED *A. Hotal*  
RESUBMIT *epw* DATE *8/2/08*

**HIGHWAY SAFETY CORP.**  
GLASTONBURY, CT

ITEM 525.44 SB-R790M BRIDGE RAILING, GALVANIZED HDSB/ FASCIA MOUNTED/STEEL TUBING TOWN OF BURKE, VT PROJECT No. BRZ 1447 (15)	DRAWN <i>p. radice</i> CHECKED DATE <i>7/24/08</i> SCALE NONE HSC REFERENCE NO. <i>1661</i> SIZE D REVISION 0 SHEET NO. <i>3 of 3</i>
GENERAL CONTRACTOR	
SUB CONTRACTOR <i>F. R. LAFAYETTE</i>	

\* OUR NOTES ABOUT QUALITIES: BRIDGE #16 (BRIDGE #17)