



REMOVAL AND DISPOSAL OF GUARD RAIL
 STA 2+312.500 - 2+320.200 LT
 STA 2+312.000 - 2+320.000 RT
 STA 2+328.000 - 2+335.400 LT
 STA 2+328.100 - 2+336.000 RT

HD STEEL BEAM GUARD RAIL, GALVANIZED
 STA 2+296.000 - 2+318.600 LT
 STA 2+276.200 - 2+318.200 RT
 STA 2+329.700 - 2+352.300 LT
 STA 2+330.000 - 2+345.400 RT

ANCHOR FOR STEEL BEAM RAIL
 STA 2+298.000 LT
 STA 2+278.300 RT
 STA 2+350.200 LT
 STA 2+343.400 RT

CONSTRUCT DRIVE*
 STA 2+280.000 LT - W/2000 PAVED APRON
 * PAVEMENT FOR DRIVE SHALL BE ONE 40mm LIFT OF TYPE III OR IV PAVEMENT.

REMOVING SIGNS
 STA 2+262.850 LT
 STA 2+265.350 LT
 STA 2+317.940 LT
 STA 2+317.950 RT
 STA 2+329.700 LT
 STA 2+329.830 RT

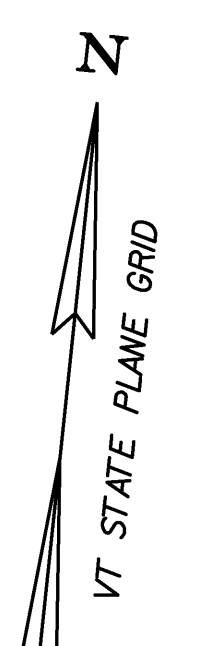
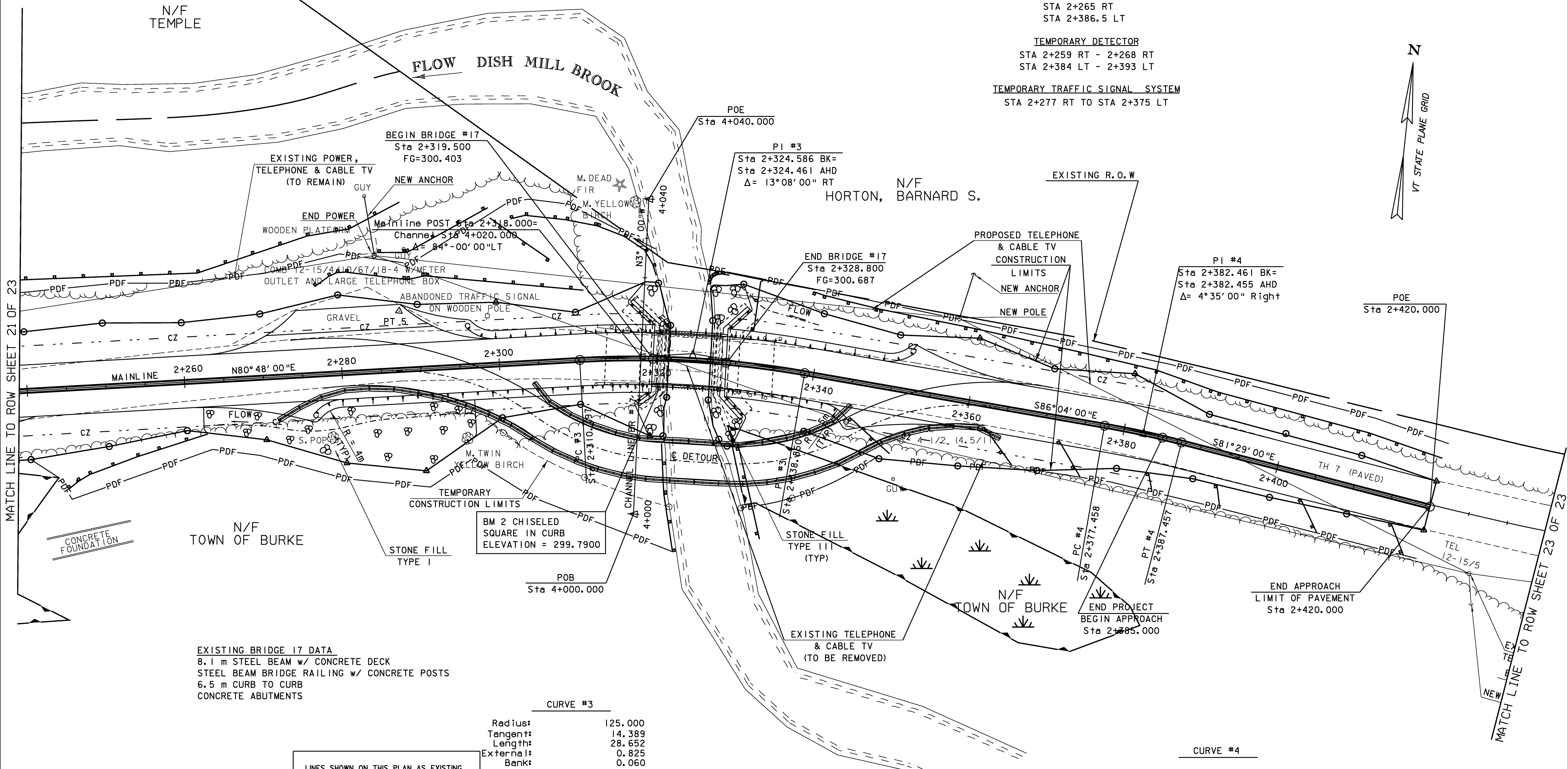
BRIDGE RAILING, HDSB/FASCIA MOUNTED/STEEL TUBING
 STA 2+318.600 - 2+329.700 LT
 STA 2+318.200 - 2+330.000 RT

100 MM YELLOW LINE
 STA 2+240.000 - 2+420.000 CENTER LINE

TEMPORARY 600 MM STOP BAR
 STA 2+265 RT
 STA 2+386.5 LT

TEMPORARY DETECTOR
 STA 2+259 RT - 2+268 RT
 STA 2+384 LT - 2+393 LT

TEMPORARY TRAFFIC SIGNAL SYSTEM
 STA 2+277 RT TO STA 2+375 LT



MATCH LINE TO ROW SHEET 21 OF 23

MATCH LINE TO ROW SHEET 23 OF 23

EXISTING BRIDGE 17 DATA
 8.1 m STEEL BEAM w/ CONCRETE DECK
 STEEL BEAM BRIDGE RAILING w/ CONCRETE POSTS
 6.5 m CURB TO CURB
 CONCRETE ABUTMENTS

CURVE #3
 Radius: 125.000
 Tangent: 14.389
 Length: 28.652
 External: 0.825
 Bank: 0.060

CURVE #4
 Radius: 125.000
 Tangent: 5.002
 Length: 9.999
 External: 0.100
 Bank: Varies

LINES SHOWN ON THIS PLAN AS EXISTING PROPERTY LINES P/L ARE BELIEVED TO BE ACCURATE BUT SHOULD NOT BE RELIED UPON FOR PURPOSES UNRELATED TO THE TOWN OF BURKE'S ACQUISITION OF LAND AND RIGHTS FOR THIS PROJECT.



FOR R.O.W. USE ONLY

ALL DRIVES AS INDICATED ON PLANS ARE SUBJECT TO PERMITS PURSUANT TO TITLE 19 SECTION III, V.S.A.

THE TOWN OF BURKE OWNS ALL AFFECTED EXISTING LAND BETWEEN STA 2+150.000 AND 2+420.000 SOUTH OF THE ROADWAY

DATUM
 VERTICAL NAVD88
 HORIZONTAL NAD83 (92)

FOR EROSION CONTROL DETAILS SEE SHEETS 13-16 OF 23

PROJECT: BURKE	PROJECT NO.: BRZ 1447 (15)
DESIGN FILE NAME: str4/87e043/se043bdr.dgn	PLOT DATE: 10-MAR-2008
IPARM FILE NAME: /str4/87e043/se043i3a.i	SURVEY DATE: 6/96
SURVEYED BY: A. MYERS	DRAWN BY: KMH
SQUAD LEADER: C. P. WILLIAMS	R.O.W. SHEET 22 OF 23 SHEETS
	SHEET 61 OF 81