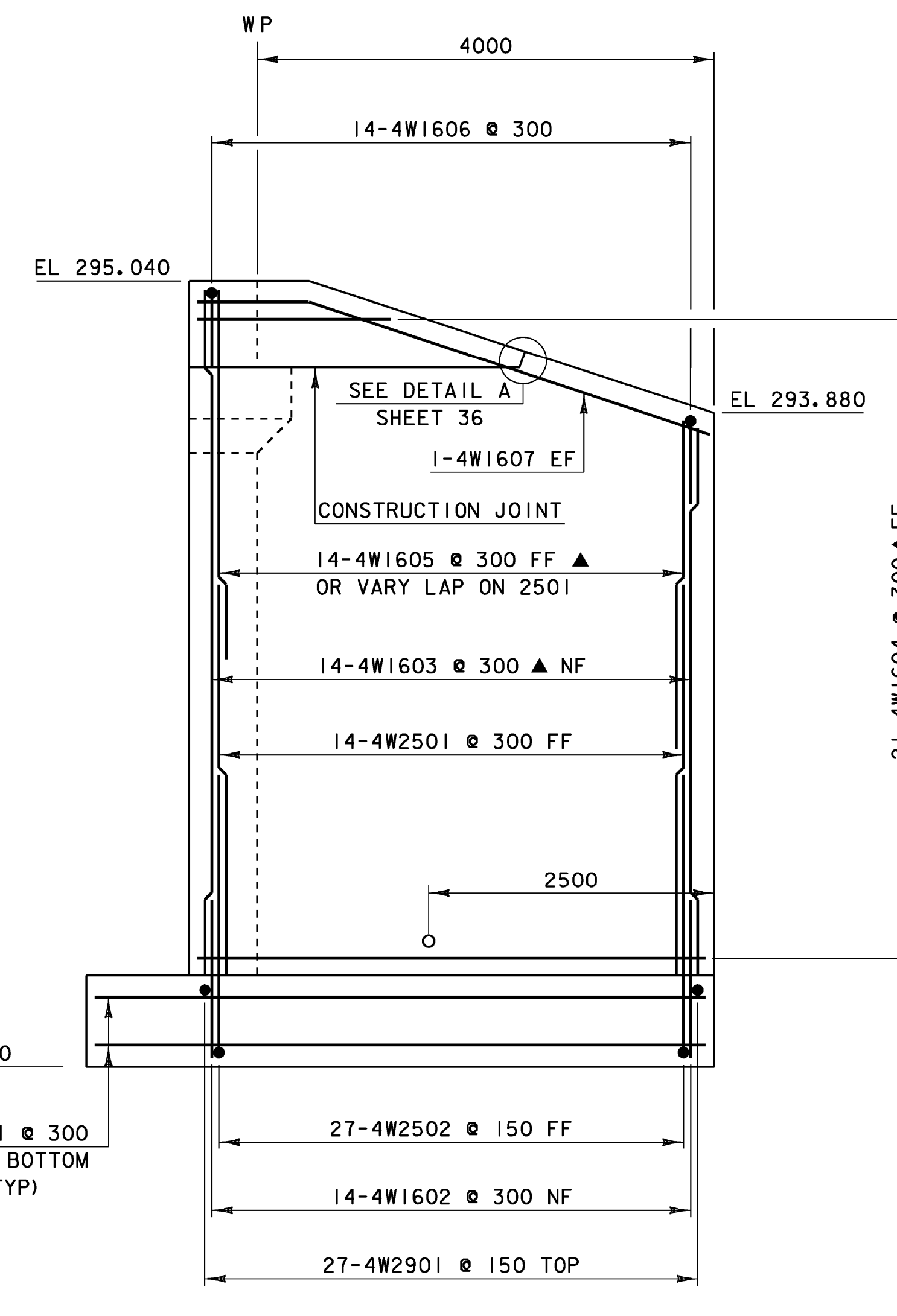
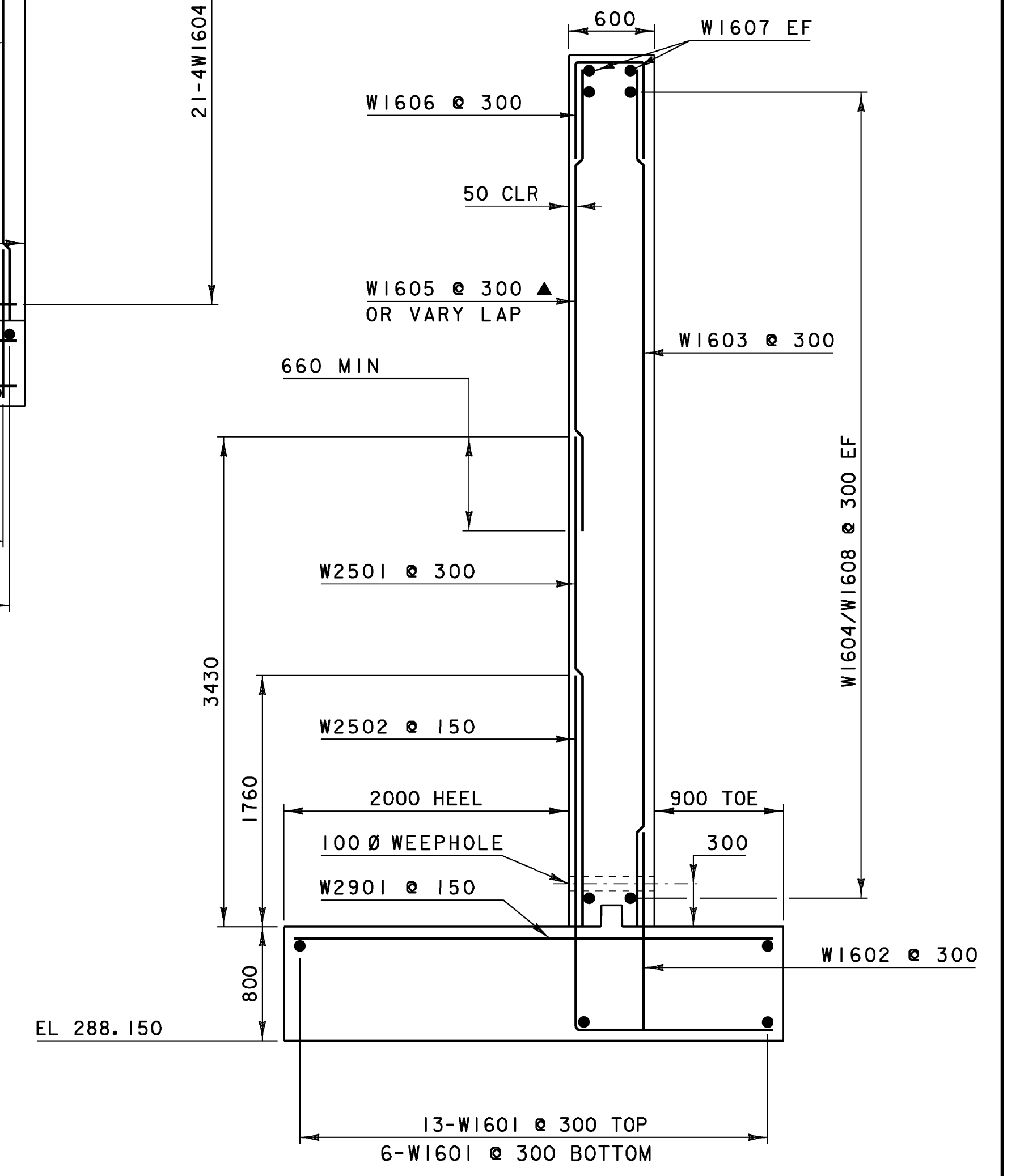


WW #3 ELEVATION
 0 1 2 3 4
 SCALE = 1:40



WW #4 ELEVATION
 0 1 2 3 4
 SCALE = 1:40



WW #3 & #4 TYPICAL SECTION
 0 1 2 3
 SCALE = 1:30

NOTES:

- NF = NEAR FACE
- FF = FAR FACE
- EF = EACH FACE
- ▲ = CUT TO FIT IN FIELD

80mm CLEAR UNLESS OTHERWISE SPECIFIED ON PLANS

ALL LAPS ARE 660mm UNLESS OTHERWISE SPECIFIED ON PLANS

NOTES:

1. SEE BRIDGE #16 ABUTMENT #2 ELEVATION FOR CORNER BARS.
2. WINGWALL #3 AND ITS FOOTING SHALL BE CONSTRUCTED AFTER TRAFFIC HAS BEEN RE-ROUTED ONTO THE NEW BRIDGE #16. MECHANICAL CONNECTORS SHALL HAVE A MINIMUM YIELD (Fy) EQUAL TO 150% Fy OF THE REINFORCING STEEL BEING CONNECTED.

SEE VALUE ENGINEERED DESIGN. THIS SHEET NOT USED FOR RECORD PLANS.

PROJECT: BURKE	PROJECT NO.: BRZ 1447 (15)
DESIGN FILE NAME: se043br16sub.dgn	PLOT DATE: 10-MAR-2008
IPARM FILE NAME: se043br16ww3x4.i	DRAWN BY: E.L.RUSTAY
DESIGNED BY: E.L.RUSTAY	CHECKED BY: K.M.HIGGINS
SQUAD LEADER: C.P.WILLIAMS	BRIDGE#16 WINGWALLS 3 & 4 DETAILS SHEET: 37 OF 81