

REMOVAL AND DISPOSAL OF GUARD RAIL
 STA 2+312.500 - 2+320.200 LT
 STA 2+312.000 - 2+320.000 RT
 STA 2+328.000 - 2+335.400 LT
 STA 2+328.100 - 2+336.000 RT

HD STEEL BEAM GUARD RAIL, GALVANIZED
 STA 2+296.000 - 2+318.600 LT
 STA 2+276.200 - 2+318.200 RT
 STA 2+329.700 - 2+352.300 LT
 STA 2+330.000 - 2+345.400 RT

ANCHOR FOR STEEL BEAM RAIL
 STA 2+298.000 LT
 STA 2+278.300 RT
 STA 2+350.200 LT
 STA 2+343.400 RT

CONSTRUCT DRIVE*
 STA 2+280.000 LT - W/2000 PAVED APRON
 * PAVEMENT FOR DRIVE SHALL BE ONE 40mm LIFT OF TYPE III OR IV PAVEMENT.

REMOVING SIGNS
 STA 2+262.850 LT
 STA 2+265.350 LT
 STA 2+317.940 LT
 STA 2+317.950 RT
 STA 2+329.700 LT
 STA 2+329.830 RT

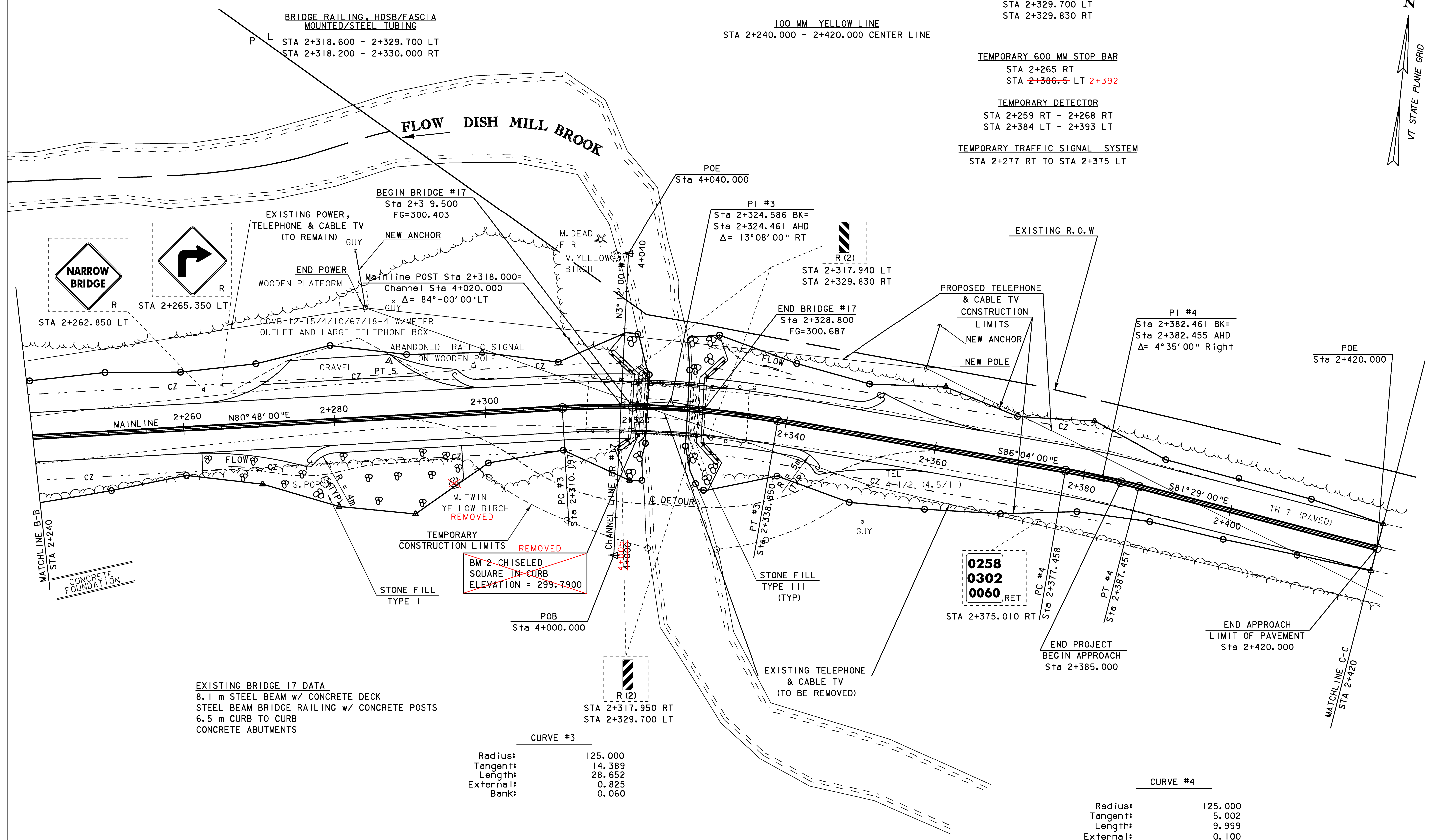
BRIDGE RAILING, HDSB/FASCIA MOUNTED/STEEL TUBING
 STA 2+318.600 - 2+329.700 LT
 STA 2+318.200 - 2+330.000 RT

100 MM YELLOW LINE
 STA 2+240.000 - 2+420.000 CENTER LINE

TEMPORARY 600 MM STOP BAR
 STA 2+265 RT
 STA 2+386.5 LT 2+392

TEMPORARY DETECTOR
 STA 2+259 RT - 2+268 RT
 STA 2+384 LT - 2+393 LT

TEMPORARY TRAFFIC SIGNAL SYSTEM
 STA 2+277 RT TO STA 2+375 LT



EXISTING BRIDGE 17 DATA
 8.1 m STEEL BEAM w/ CONCRETE DECK
 STEEL BEAM BRIDGE RAILING w/ CONCRETE POSTS
 6.5 m CURB TO CURB
 CONCRETE ABUTMENTS

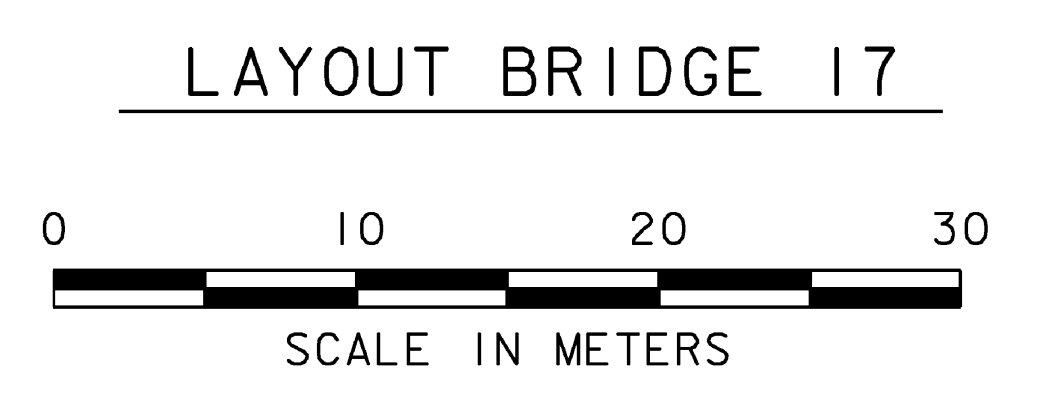
CURVE #3

Radius:	125.000
Tangent:	14.389
Length:	28.652
External:	0.825
Bank:	0.060

CURVE #4

Radius:	125.000
Tangent:	5.002
Length:	9.999
External:	0.100
Bank:	Varies

LEGEND
 ALL SIGNS AND POSTS WILL BE NEW UNLESS OTHERWISE NOTED:
 R - REMOVE
 R&S - REMOVE & SALVAGE
 S - SALVAGE
 RET - RETAIN



THE TOWN OF BURKE OWNS ALL AFFECTED EXISTING LAND BETWEEN STA 2+150.000 AND 2+420.000 SOUTH OF THE ROADWAY

DATUM
 VERTICAL NAVD88
 HORIZONTAL NAD83 (92)

PROJECT: BURKE	PROJECT NO.: BRZ 1447 (15)
DESIGN FILE NAME: 87e043/structures/se043bdr.dgn	PLOT DATE: 10-MAR-2008
IPARM FILE NAME: se043la3.1	SURVEY DATE: 12/95
SURVEYED BY: A. MYERS	DRAWN BY: K.M.HIGGINS
SQUAD LEADER: C.P. WILLIAMS	SHEET: 13 OF 81
LAYOUT BRIDGE #17	