

GPS CONTROL POINTS



HVCTRL #1

VERMONT GEODETIC SURVEY

NOT STAMPED

N = 232585.899

E = 546507.430

ELEV. = 354.658

TO REACH FROM THE INTERSECTION OF VT 114 AND TOWN HIGHWAY 7 (BURKE MOUNTAIN SKI AREA ROAD) PROCEED UP TOWN HIGHWAY 7 1.45 MI (2.33 KM) TO THE MARK ON THE RIGHT (SOUTH) . THE MARK IS 39 M (128.0 FT) SOUTHWEST OF THE INTERSECTION OF TOWN HIGHWAY 7 AND A SIDE ROAD LEADING TO BURKE MOUNTAIN CROSS COUNTRY SKI AREA LEFT (NORTH) , 19.2 M (63.0 FT) WEST SOUTHWEST OF A COMBINATION UTILITY POLE NUMBER 131/5/28/12-15/21, 4.5 M (14.8 FT) SOUTH SOUTHEAST OF AND .2 M (0.7 FT) LOWER IN ELEVATION THAN THE CENTERLINE OF TOWN HIGHWAY 7, AND .3 M (1.0 FT) NORTH NORTHEAST OF A WOODEN WITNESS MARKED 1.

HVCTRL #2

VERMONT GEODETIC SURVEY

NOT STAMPED

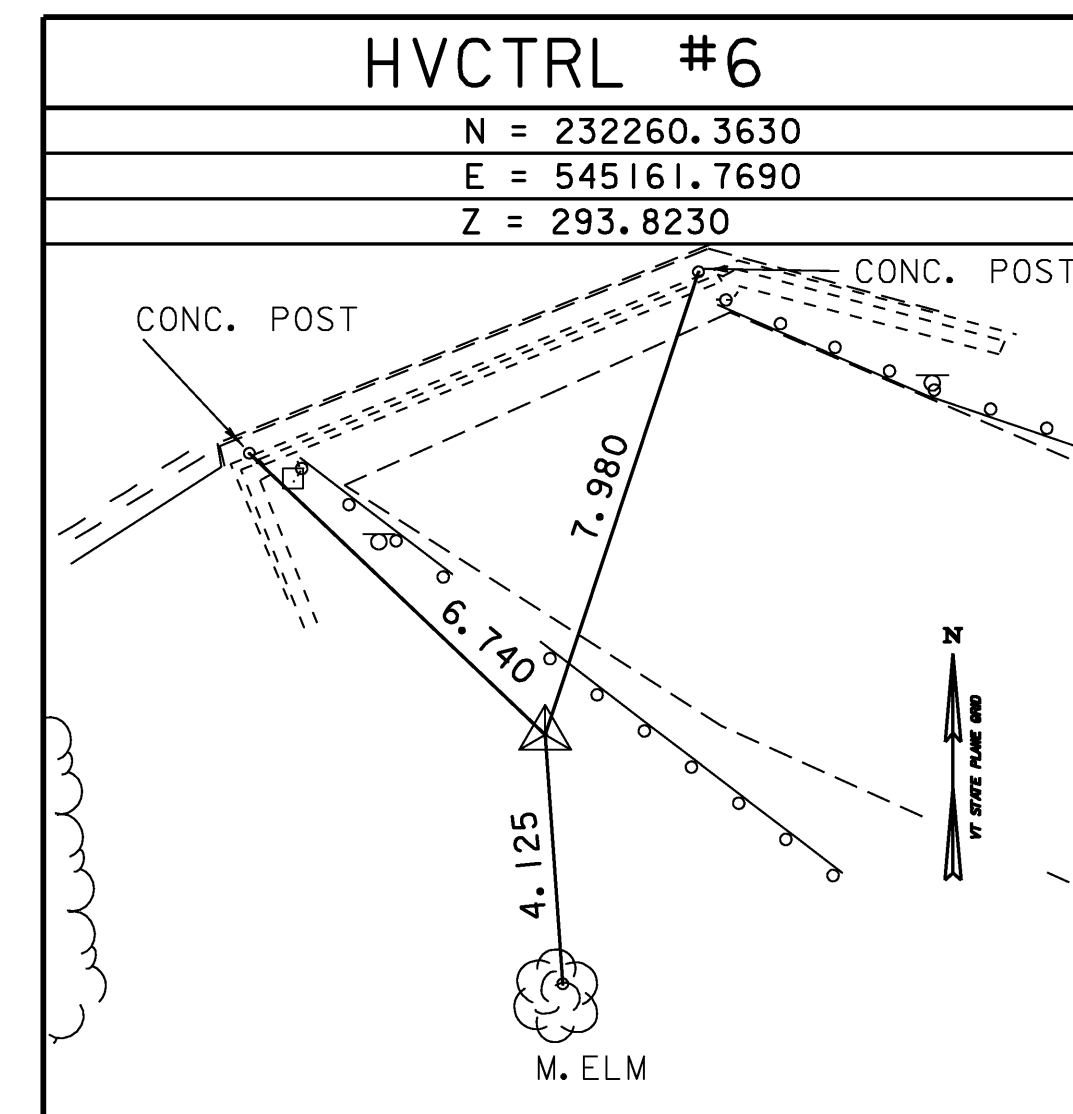
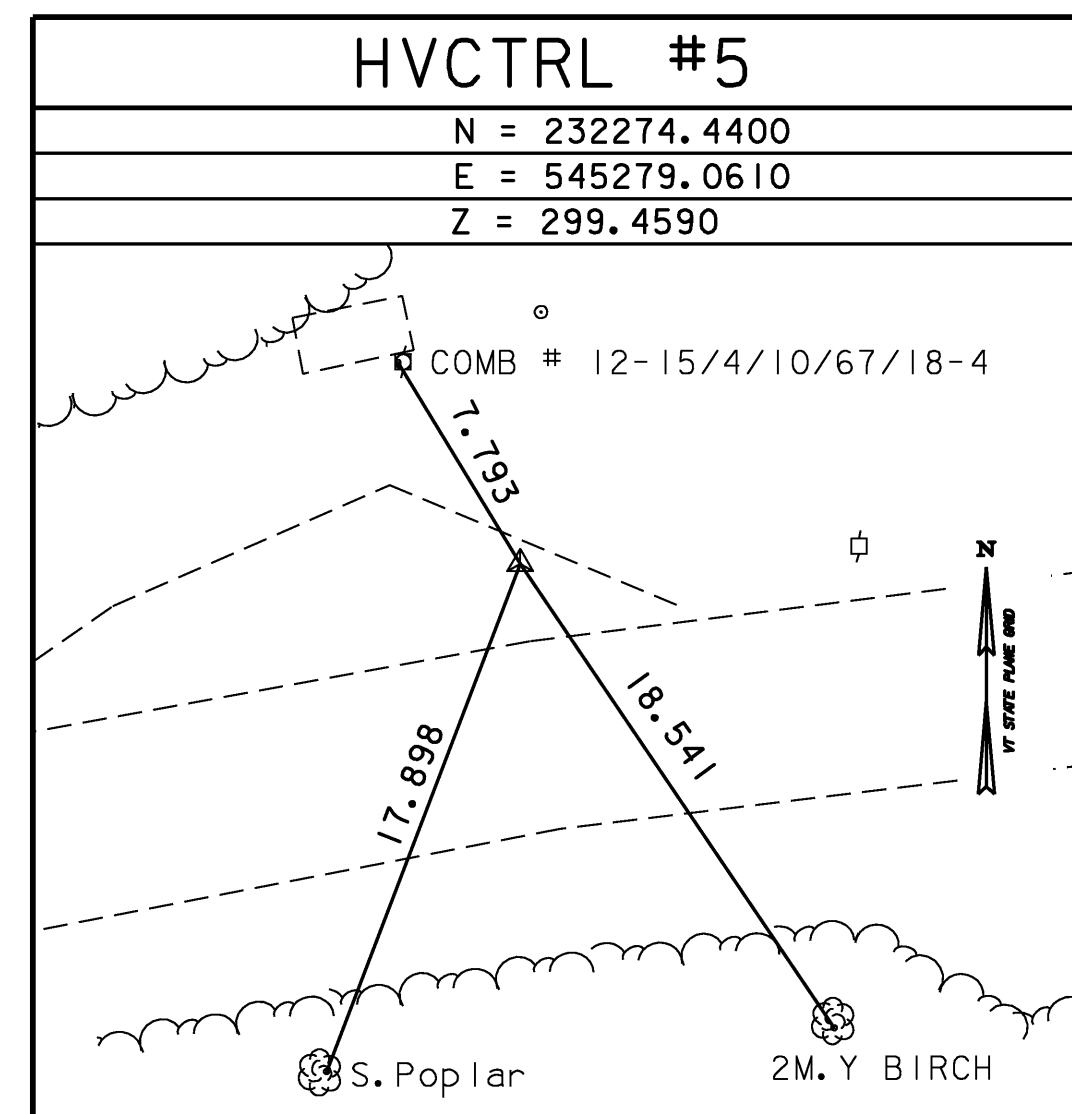
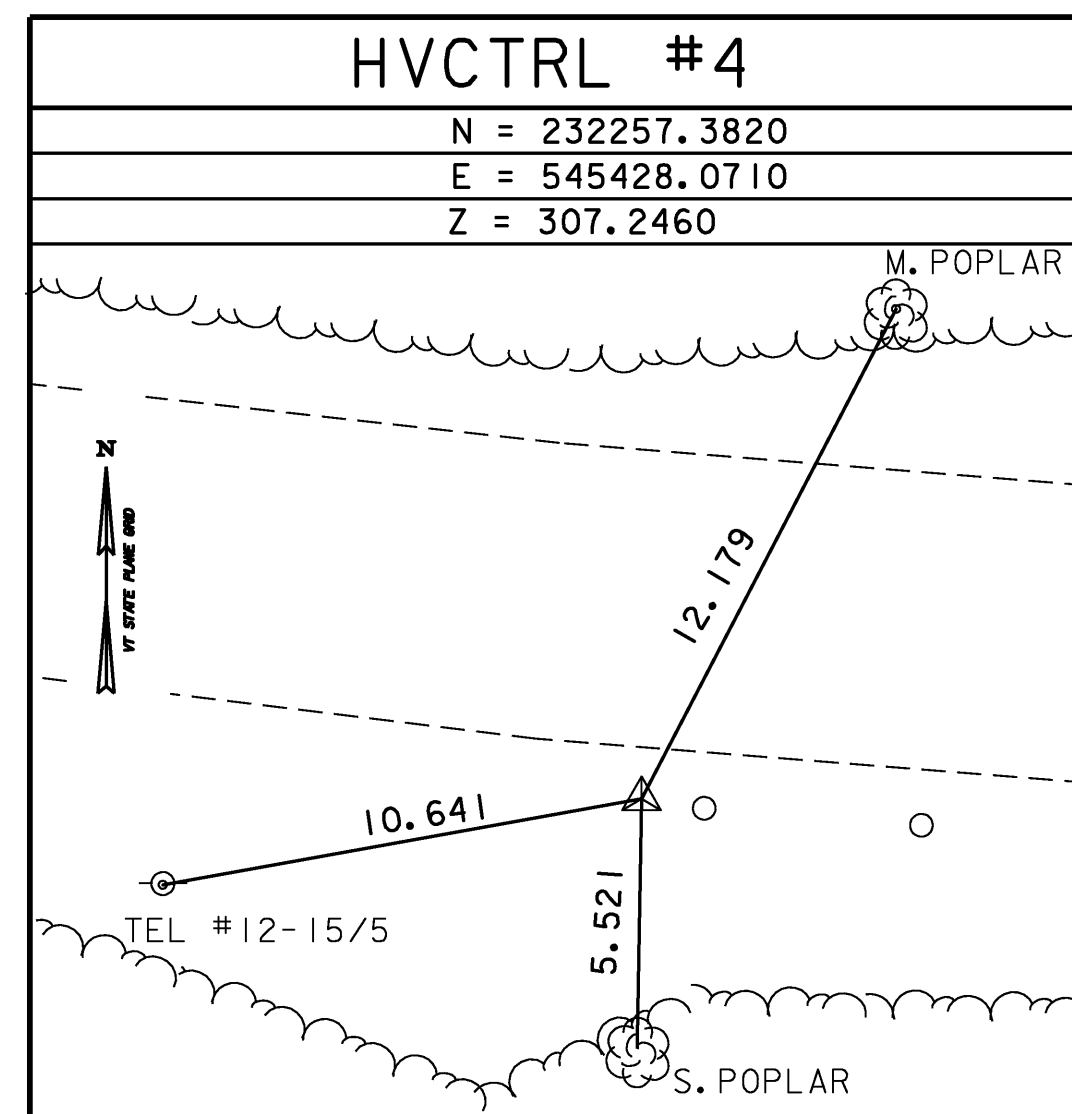
N = 232380.758

E = 546062.579

ELEV. = 338.597

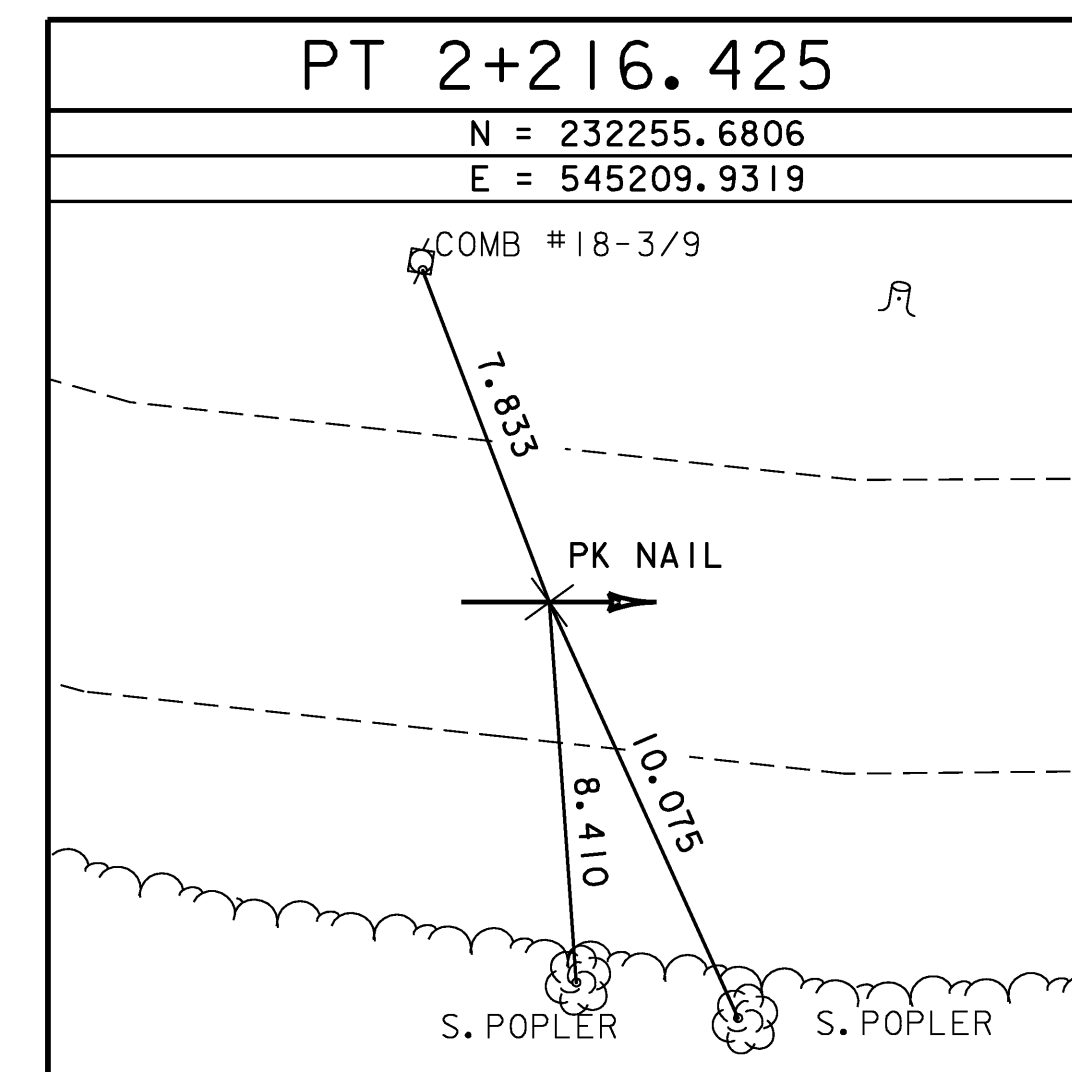
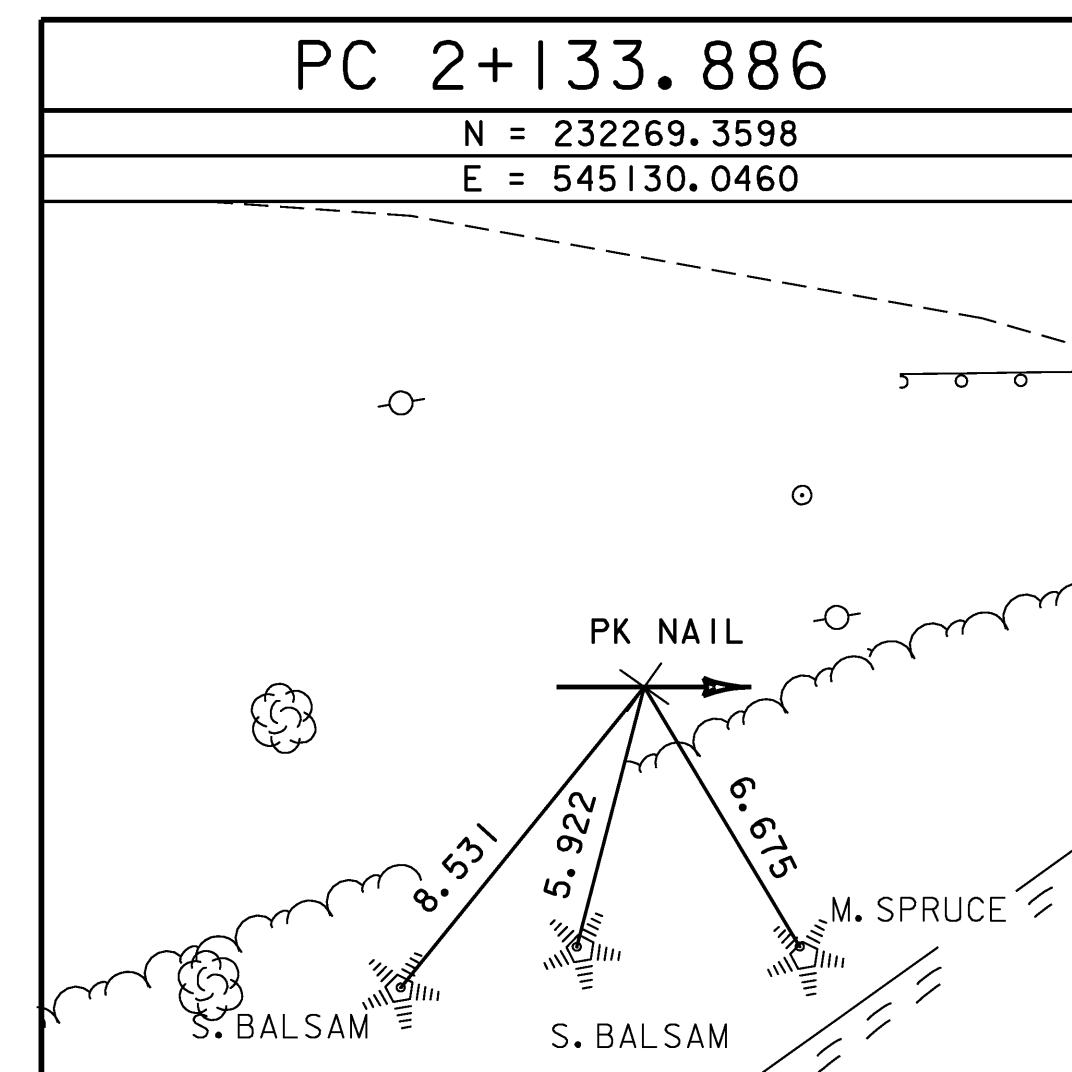
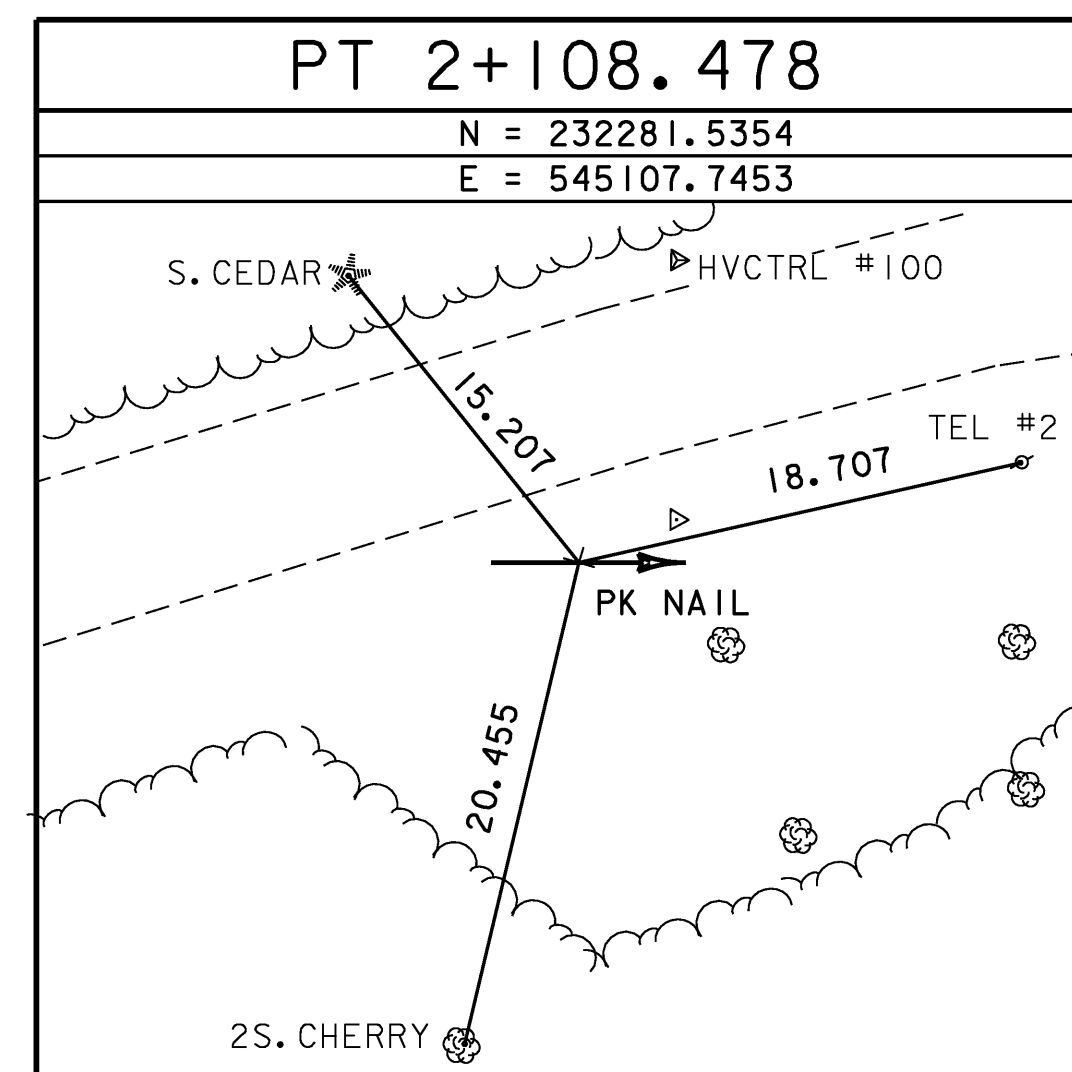
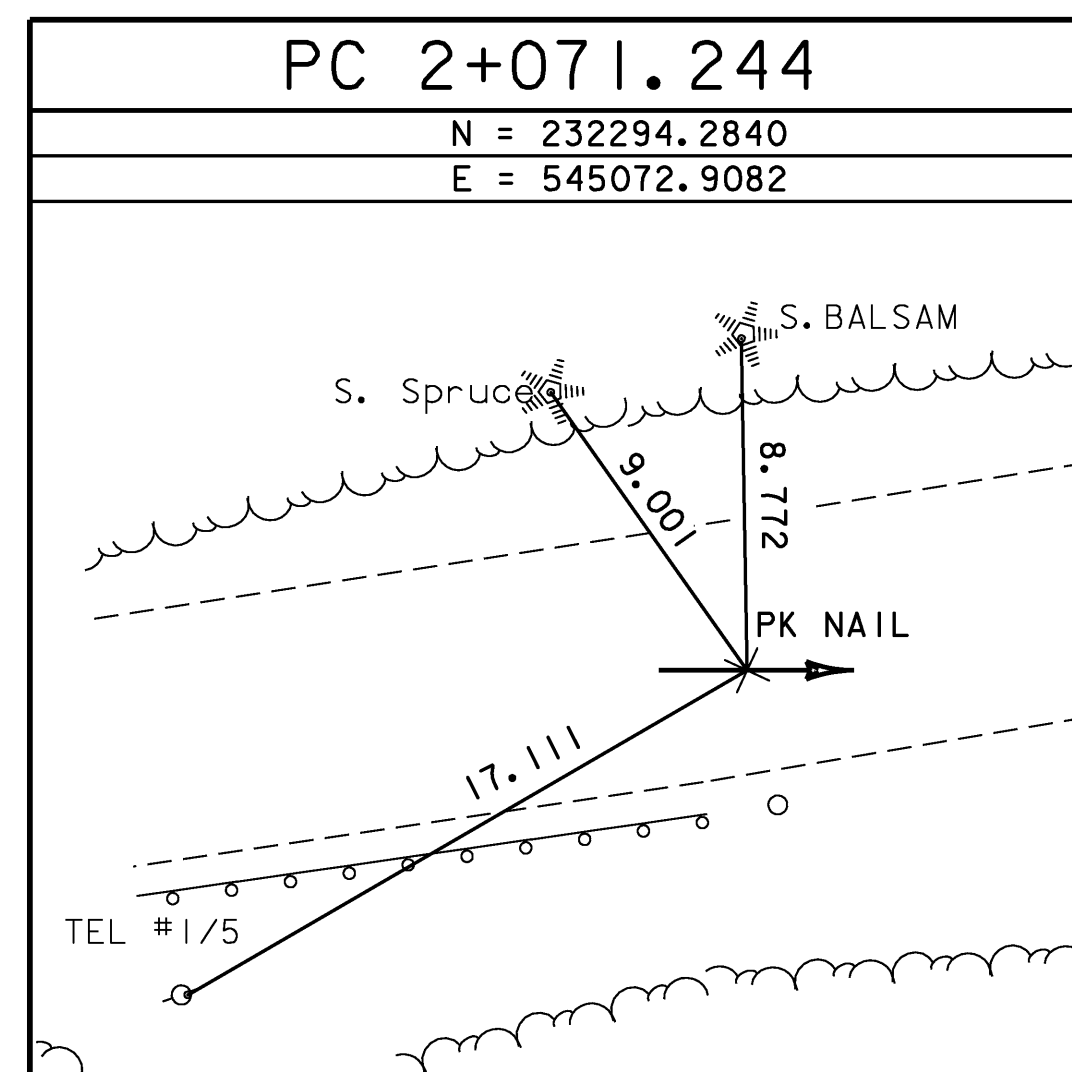
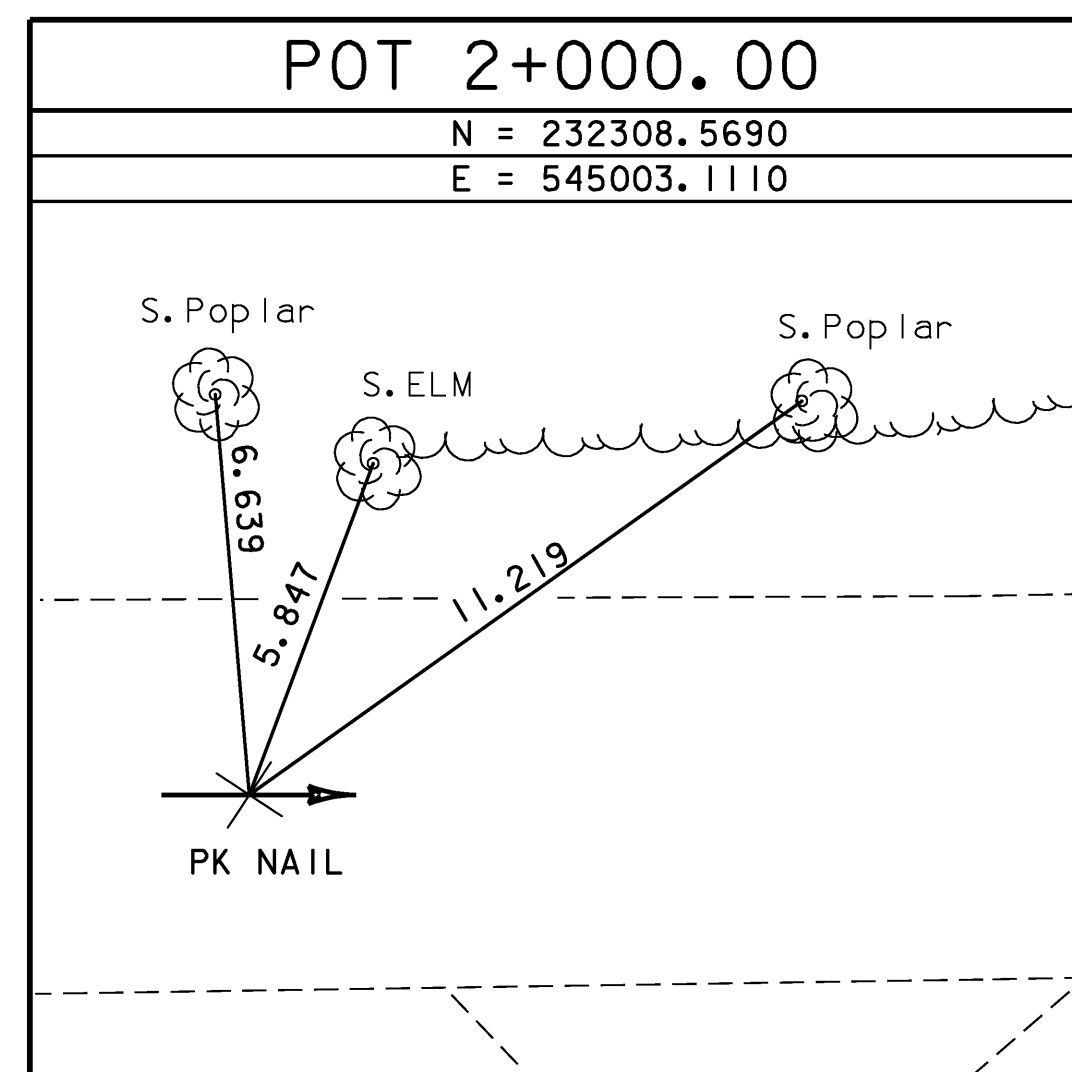
TO REACH FROM THE INTERSECTION OF VT 114 AND TOWN HIGHWAY 7 (BURKE MOUNTAIN SKI AREA ROAD) PROCEED UP TOWN HIGHWAY 7 1.1 MI (1.8 KM) TO THE MARK ON THE RIGHT (SOUTH) . THE MARK IS 42 M (137.8 FT) NORTHEAST OF A COMBINATION UTILITY POLE NUMBER 13/21, 32 M (105.0 FT) SOUTH SOUTHWEST OF A COMBINATION UTILITY POLE NUMBER 14/22, 3.9 M (12.8 FT) SOUTH SOUTHWEST OF AND .2 M (0.7 FT) LOWER IN ELEVATION THAN THE CENTERLINE OF TOWN HIGHWAY 7, .5M SOUTH SOUTHWEST OF CABLED GUARDRAILS, AND .3 M (1.0 FT) NORTH NORTHEAST OF A WOODEN WITNES MARKED 2.

TRAVERSE TIES



* MAIN TRAVERSE COMPLETED: DECEMBER 20, 1995 BY: A. Myers & R. Moreau

ALIGNMENT TIES



* ALIGNMENT STAKED ON OCTOBER 14, 2002 BY R. GILMAN, P. WINTERS & J. SCHULTZ

DATUM	
VERTICAL	NAVD 88
HORIZONTAL	NAD 83(92)
ADJUSTMENT	unknown

PROJECT NAME:	BURKE
PROJECT NUMBER:	BRZ 1447(I5)
FILE NAME:	87e043/xe043t1.dgn
PROJECT LEADER:	C. P. WILLIAMS
DESIGNED BY:	K. M. HIGGINS
TRAVERSE & ALIGNMENT TIES	
PLOT DATE:	10-MAR-2008
DRAWN BY:	J. HULETT
CHECKED BY:	P. HODGE
SHEET	9 OF 81