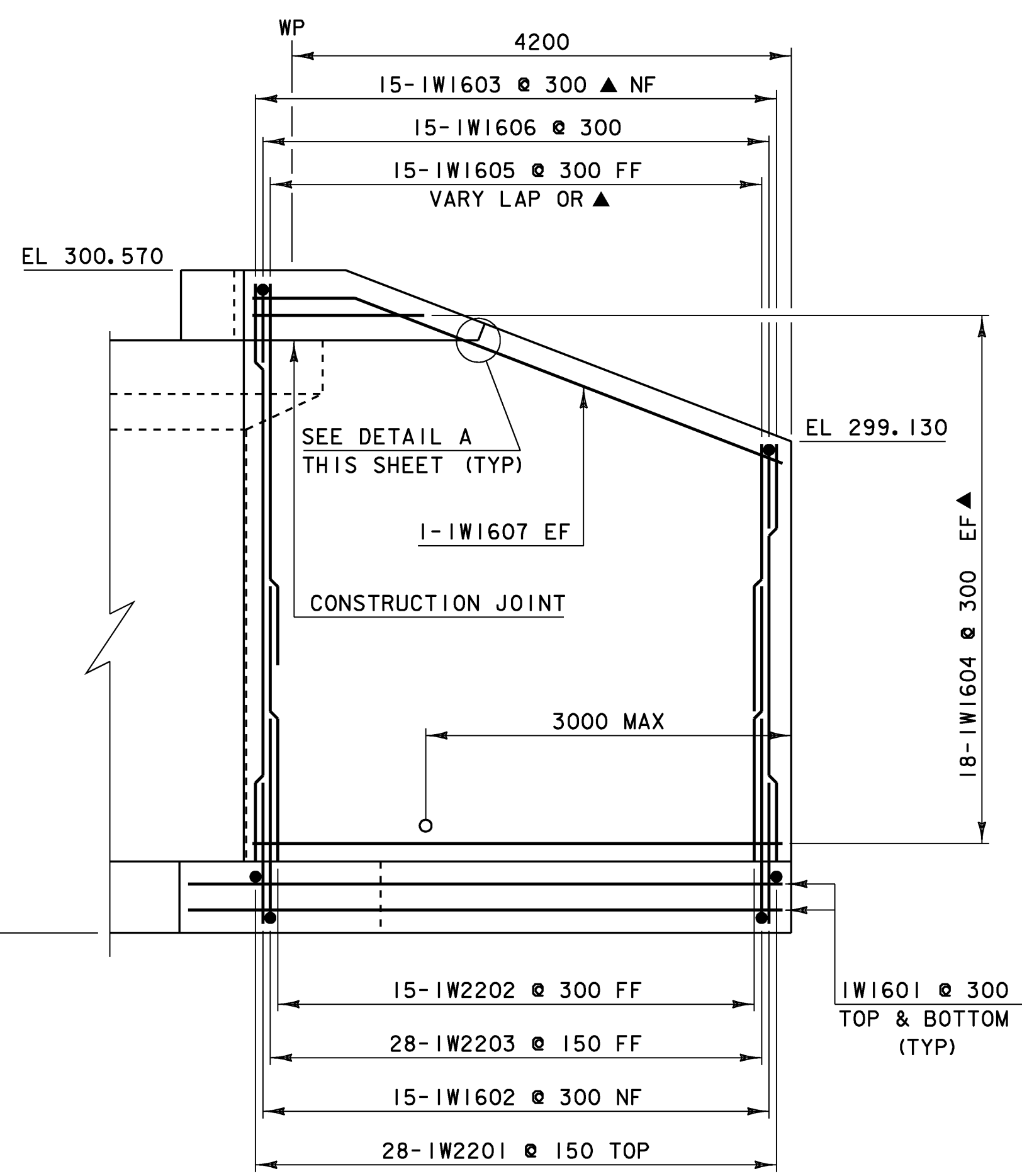
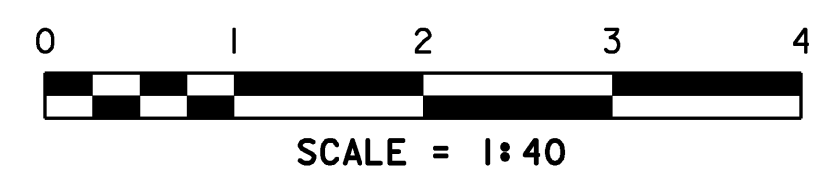
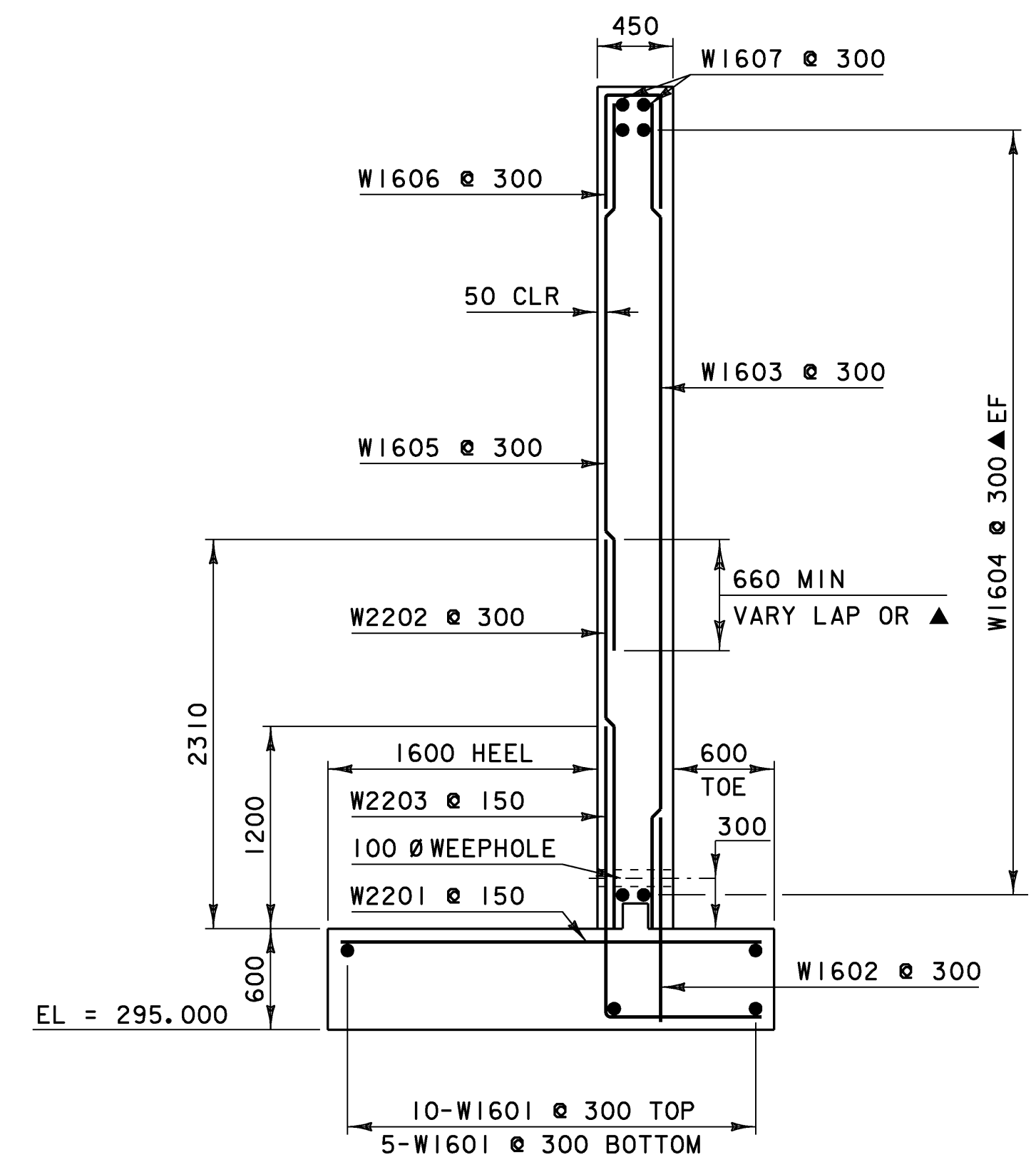
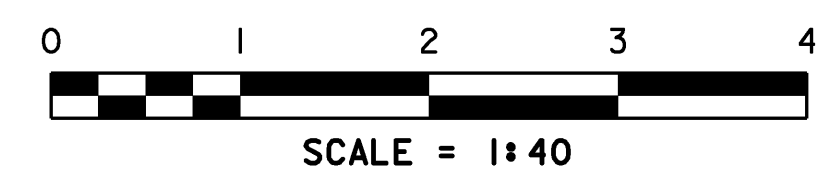


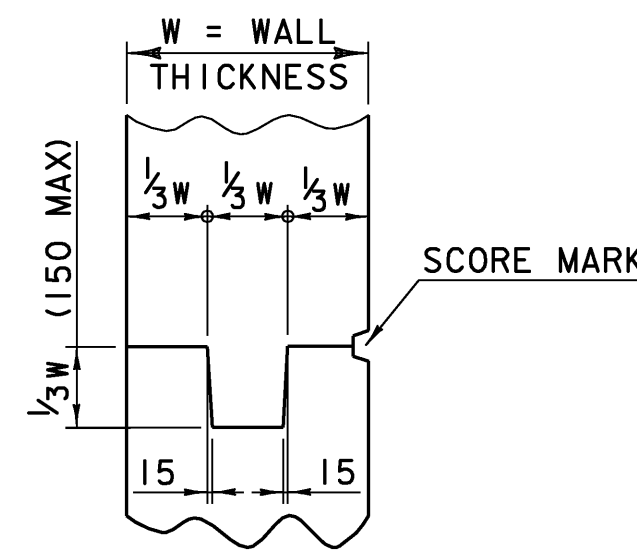
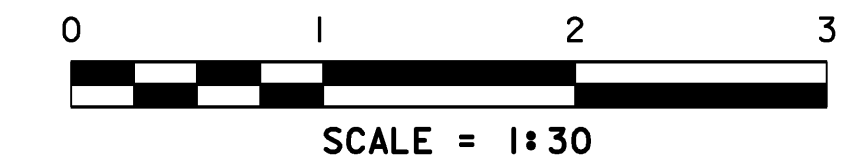
WW #2 ELEVATION



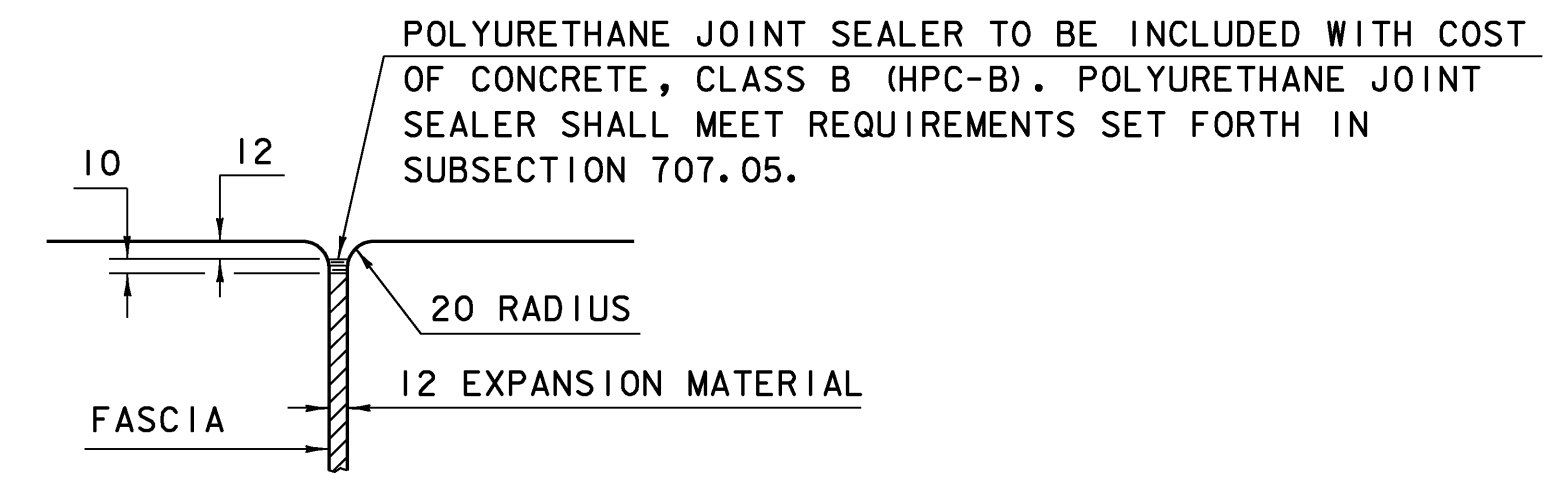
WW #1 ELEVATION



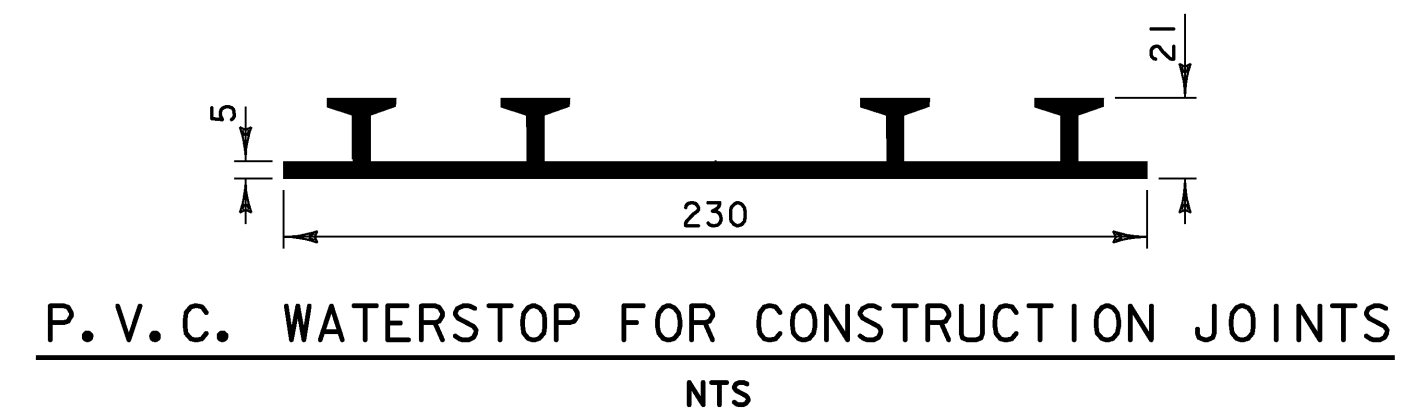
WINGWALL TYPICAL SECTION



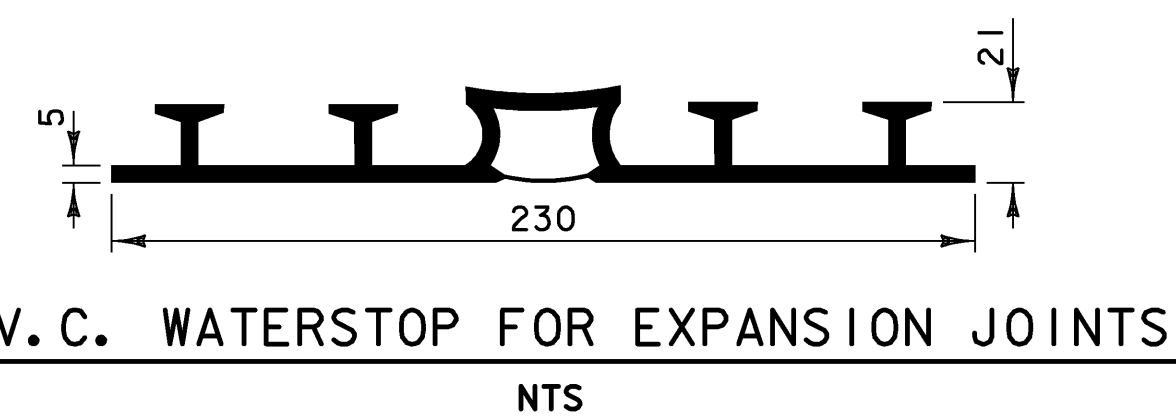
TYPICAL CONCRETE CONSTRUCTION JOINT  
NTS



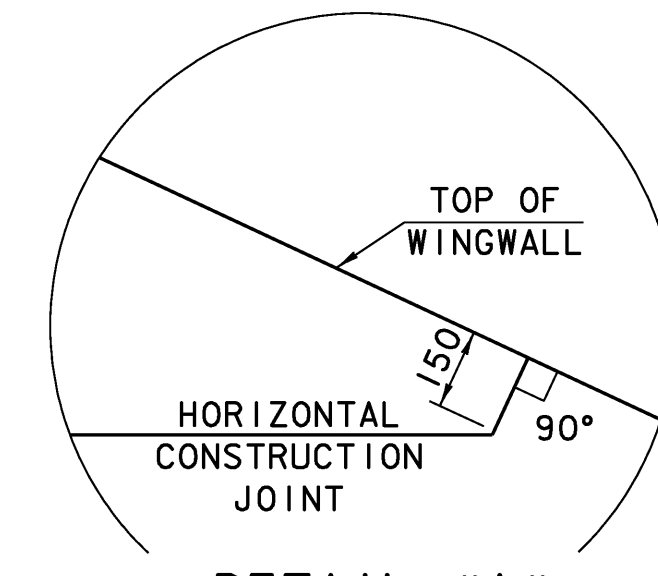
JOINT BETWEEN FASCIA AND WINGWALL  
NTS



P.V.C. WATERSTOP FOR CONSTRUCTION JOINTS  
NTS



P.V.C. WATERSTOP FOR EXPANSION JOINTS  
NTS



DETAIL "A"  
NTS

THE COSTS FOR P.V.C. WATERSTOP SHALL BE INCLUDED IN THE UNIT PRICE BID FOR CONCRETE. OTHER CONFIGURATIONS MAY BE USED UPON APPROVAL OF THE STRUCTURES ENGINEER.

NOTES:  
NF = NEAR FACE  
FF = FAR FACE  
EF = EACH FACE  
▲ = CUT TO FIT IN FIELD  
  
80mm CLEAR UNLESS OTHERWISE SPECIFIED ON PLANS  
  
ALL LAPS ARE 660mm UNLESS OTHERWISE SPECIFIED ON PLANS

NOTE: SEE BRIDGE #17 ABUTMENT #1 ELEVATION FOR CORNER BARS

PROJECT: <b>BURKE</b>	PROJECT NO.: <b>BRZ 1447 (15)</b>
DESIGN FILE NAME: se043br17sub.dgn	PLOT DATE: 13-MAR-2008
IPARM FILE NAME: se043br17ww1x2.i	DRAWN BY: E.L.RUSTAY
DESIGNED BY: E.L.RUSTAY	CHECKED BY: K.M.HIGGINS
SQUAD LEADER: C.P.WILLIAMS	
BRIDGE #17 WINGWALLS 1 & 2 DETAILS SHEET: 43 OF 81	