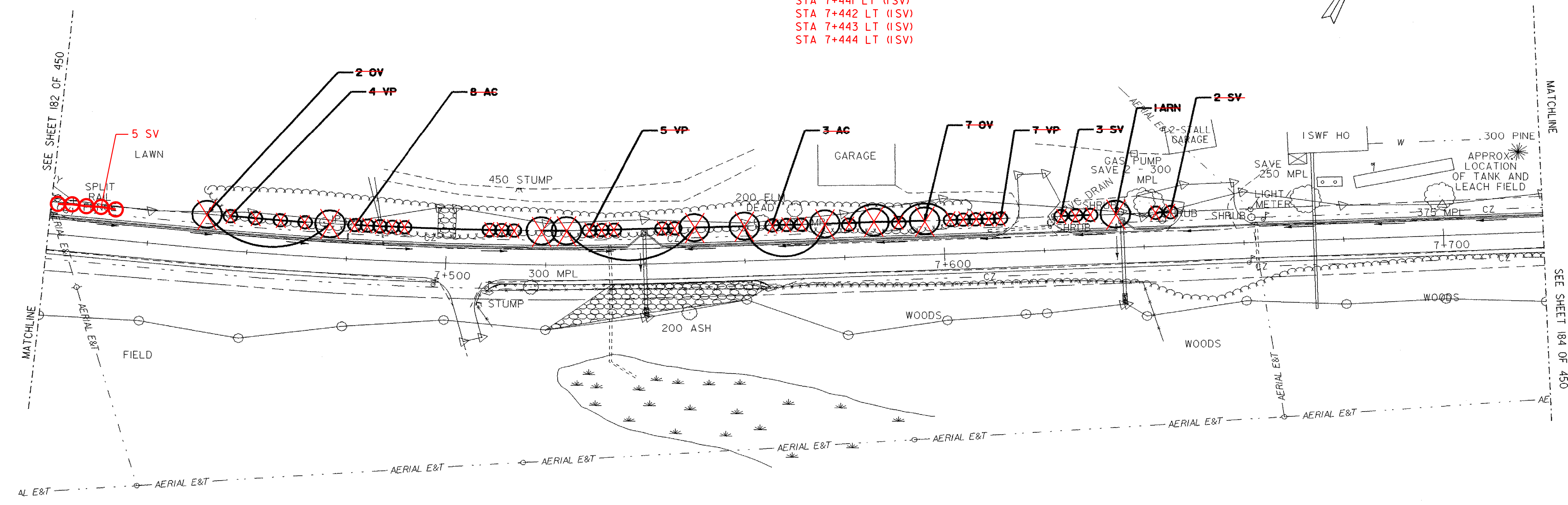
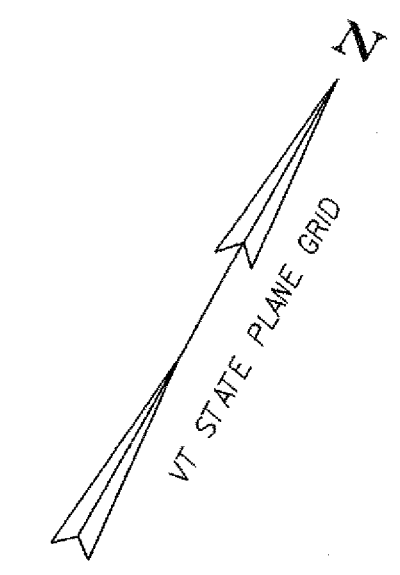
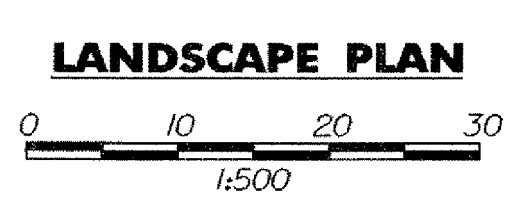


- | | | |
|------------------------|-------------------------|-------------------------|
| DECIDUOUS TREES | DECIDUOUS SHRUBS | DECIDUOUS SHRUBS |
| STA 7+451 LT (1 OV) | STA 7+456 LT (1 VP) | STA 7+546 LT (1 VP) |
| STA 7+478 LT (1 OV) | STA 7+461 LT (1 VP) | STA 7+566 LT (1 AC) |
| STA 7+519 LT (1 OV) | STA 7+466 LT (1 VP) | STA 7+589 LT (1 AC) |
| STA 7+524 LT (1 OV) | STA 7+471 LT (1 VP) | STA 7+572 LT (1 AC) |
| STA 7+550 LT (1 OV) | STA 7+481 LT (1 AC) | STA 7+581 LT (1 VP) |
| STA 7+560 LT (1 OV) | STA 7+484 LT (1 AC) | STA 7+581 LT (1 VP) |
| STA 7+577 LT (1 OV) | STA 7+486 LT (1 AC) | STA 7+602 LT (1 VP) |
| STA 7+586 LT (1 OV) | STA 7+489 LT (1 AC) | STA 7+604 LT (1 VP) |
| STA 7+586 LT (1 OV) | STA 7+491 LT (1 AC) | STA 7+607 LT (1 VP) |
| STA 7+635 LT (1 ARN) | STA 7+508 LT (1 AC) | STA 7+609 LT (1 VP) |
| | STA 7+511 LT (1 AC) | STA 7+612 LT (1 VP) |
| | STA 7+514 LT (1 AC) | STA 7+624 LT (1 SV) |
| | STA 7+529 LT (1 VP) | STA 7+627 LT (1 SV) |
| | STA 7+531 LT (1 VP) | STA 7+630 LT (1 SV) |
| | STA 7+534 LT (1 VP) | STA 7+643 LT (1 SV) |
| | STA 7+544 LT (1 VP) | STA 7+646 LT (1 SV) |
| | STA 7+440 LT (1 SV) | |
| | STA 7+441 LT (1 SV) | |
| | STA 7+442 LT (1 SV) | |
| | STA 7+443 LT (1 SV) | |
| | STA 7+444 LT (1 SV) | |



LEGEND

- DIRECTION OF DITCH FLOW
- PROPOSED TREE
- EXISTING TREES
- PROPOSED SHRUB
- PROPOSED GROUND COVER
- NEW LOCATION FOR TRANSPLANTED MATERIAL
- EXISTING PLANT MATERIAL TO BE TRANSPLANTED
- TREE PROTECTION ZONE WITH FENCING
- LIMIT OF CUT
- LIMIT OF FILL



PROJECT NAME: HIGHGATE - FRANKLIN	
PROJECT NUMBER: STP RS 0301(I) SA	
FILE NAME: 85c060/design/dc060landbdr.dgn	PLOT DATE: 09-MAY-2005
PROJECT LEADER: DELLASANTA	DRAWN BY: SQUAD B
DESIGNED BY: SQUAD B	CHECKED BY: SQUAD B
IPARM FILE NAME: dc060land20.i	SHEET 183 OF 450