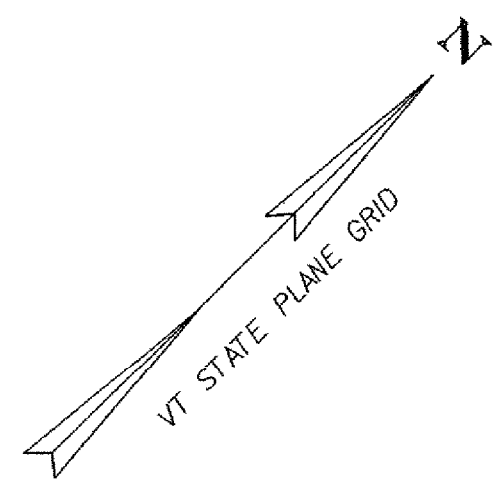


**SNOW FENCE**  
STA 6+952 TO STA 7+001 LT

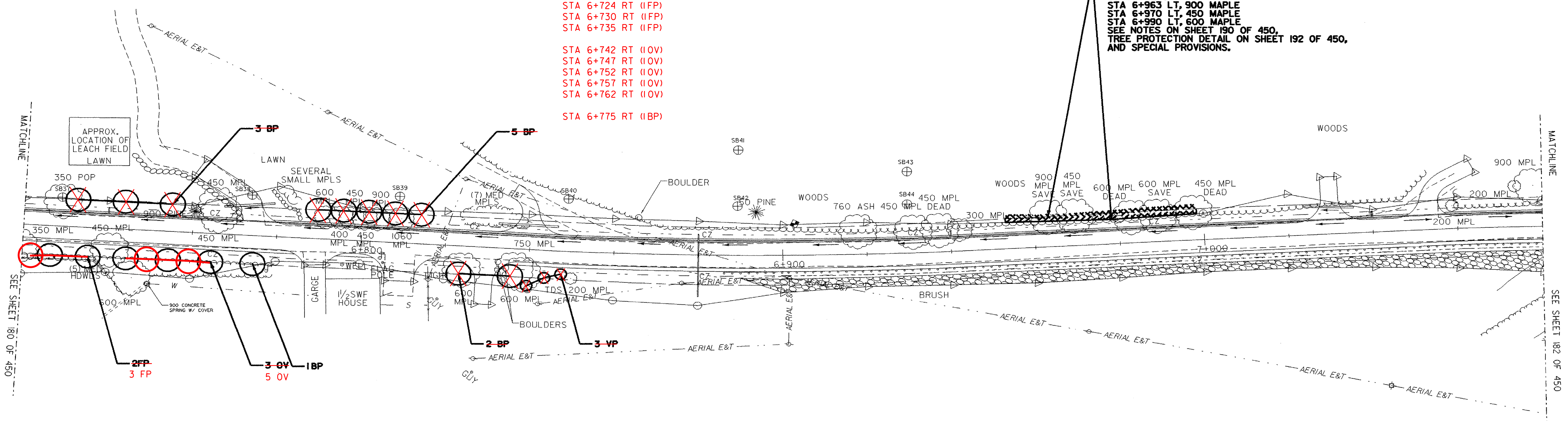
**DECIDUOUS TREES**  
 STA 6+733 LT (1 BP)  
 STA 6+745 LT (1 BP)  
 STA 6+755 LT (1 BP)  
 STA 6+790 LT (1 BP)  
 STA 6+796 LT (1 BP)  
 STA 6+802 LT (1 BP)  
 STA 6+808 LT (1 BP)  
 STA 6+814 LT (1 BP)  
 STA 6+726 RT (1 TP)  
 STA 6+735 RT (1 TP)  
 STA 6+745 RT (1 OV)  
 STA 6+754 RT (1 OV)  
 STA 6+765 RT (1 OV)  
 STA 6+775 RT (1 BP)  
 STA 6+823 RT (1 BP)  
 STA 6+836 RT (1 BP)  
 STA 6+724 RT (IFP)  
 STA 6+730 RT (IFP)  
 STA 6+735 RT (IFP)

**DECIDUOUS SHRUBS**  
 STA 6+840 RT (1 VP)  
 STA 6+844 RT (1 VP)  
 STA 6+848 RT (1 VP)

STA 6+742 RT (IOV)  
 STA 6+747 RT (IOV)  
 STA 6+752 RT (IOV)  
 STA 6+757 RT (IOV)  
 STA 6+762 RT (IOV)  
 STA 6+775 RT (IBP)



**TREE PROTECTION ZONE:**  
 STA 6+952 TO STA 7+001 LT  
 TO INCLUDE:  
 STA 6+963 LT, 900 MAPLE  
 STA 6+970 LT, 450 MAPLE  
 STA 6+990 LT, 600 MAPLE  
 SEE NOTES ON SHEET 190 OF 450,  
 TREE PROTECTION DETAIL ON SHEET 192 OF 450,  
 AND SPECIAL PROVISIONS.



**LEGEND**

- DIRECTION OF DITCH FLOW
- PROPOSED TREE
- EXISTING TREES
- PROPOSED SHRUB
- PROPOSED GROUND COVER
- NEW LOCATION FOR TRANSPLANTED MATERIAL
- EXISTING PLANT MATERIAL TO BE TRANSPLANTED
- TREE PROTECTION ZONE WITH FENCING
- LIMIT OF CUT
- LIMIT OF FILL

**LANDSCAPE PLAN**



PROJECT NAME: HIGHGATE - FRANKLIN	
PROJECT NUMBER: STP RS 0301(I)SA	
FILE NAME: r85c060/design/dc060landbdr.dgn	PLOT DATE: 09-MAY-2005
PROJECT LEADER: DELLASANTA	DRAWN BY: SQUAD B
DESIGNED BY: SQUAD B	CHECKED BY: SQUAD B
IPARM FILE NAME: dc060land18.i	SHEET 181 OF 450