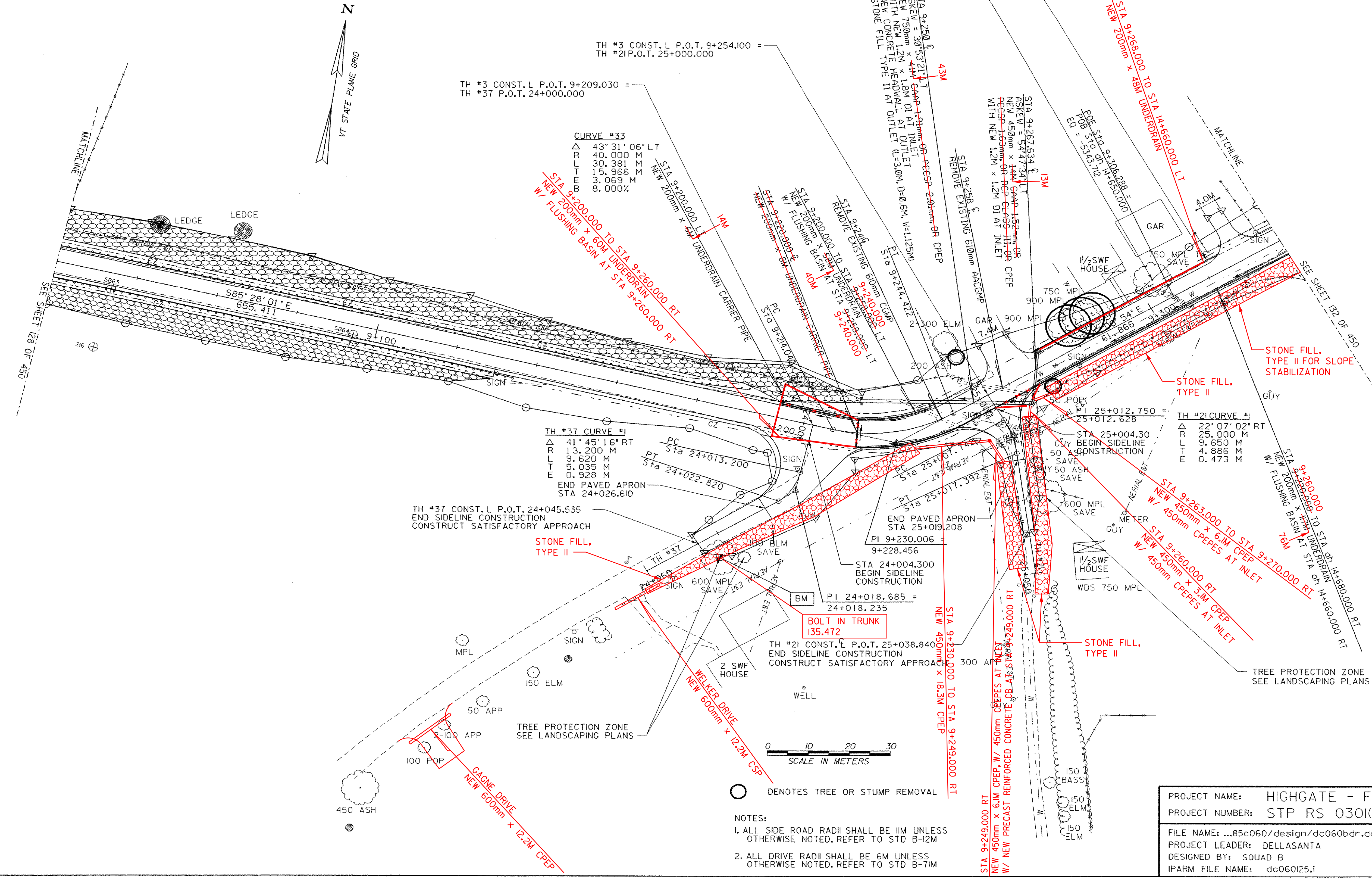


- STEEL BEAM GUARDRAIL 9+120.000
STA 9+020.000 TO STA 9+120.948 RT
STA 9+020.000 TO STA 9+176.885 LT
9+177.000
- GRUBBING MATERIAL 9+220.000
STA 9+020.000 TO STA 9+192.062 LT
STA 9+020.000 TO STA 9+135.285 RT
9+120.000
- EROSION MATTING (WHITE)
STA 9+020.000 TO STA 9+192.062 LT
STA 9+020.000 TO STA 9+135.285 RT
- GEOTEXTILE UNDER STONE FILL
STA 9+020.000 TO STA 9+220.000 LT
- MANUFACTURED TERMINAL SECTION (TANGENTIAL)
STA 9+120.048 TO STA 9+135.285 RT
STA 9+176.885 TO STA 9+192.062 LT
9+177.000 9+192.200
STONE FILL, TYPE II 9+220.000
STA 9+020.000 TO STA 9+192.062 LT
STA 9+020.000 TO STA 9+135.285 RT
9+120.000
- CONSTRUCT SPECIAL DITCH
STA 24+005.000 TO STA 24+043.000 RT
STA 9+215.000 TO STA 9+246.000 RT
STA 25+005.000 TO STA 25+034.500 LT
STA 25+005.000 TO STA 25+025.000 RT
STA 9+256.000 TO STA 14+680.000 RT
- VERTICAL GRANITE CURB
STA 9+268.614 TO STA 14+665.216 LT
9+271.000 14+664.000
- REMOVING AND RESETTING FENCE
STA 9+020.000 TO STA 9+248.540 LT
STA 9+248.540 LT 4.6M BACK
STA 9+263.493 TO STA 14+680.000 RT
STA 14+663.080 LT 4M BACK
STA 14+676.230 LT 3.6M BACK
STA 14+663.080 TO STA 14+680.000 LT
- PORTLAND CEMENT CONCRETE SIDEWALK, 125MM
STA 9+295.598 LT (8M BACK)
- CONSTRUCT DRIVE
STA 9+263.000 LT GRAVEL
STA 14+670.000 LT GRAVEL
- STONE FILL, TYPE II
HANNA RD STA 24+063.000 TO STA 9+230.000 RT
WEBSTER RD STA 25+010.000 TO STA 25+058.000 LT
WEBSTER RD STA 25+010.000 TO STA 25+039.000 RT
STA 9+270.000 TO STA 14+680.000 RT



CURVE #33

Δ	43° 31' 06" LT
R	40.000 M
L	30.381 M
T	15.966 M
E	3.069 M
B	8.000%

TH #37 CURVE #1

Δ	41° 45' 16" RT
R	13.200 M
L	9.620 M
T	5.035 M
E	0.928 M

PROJECT NAME:	HIGHGATE - FRANKLIN
PROJECT NUMBER:	STP RS 030(K) SA
FILE NAME:	...85c060/design/dc060bdr.dgn
PLOT DATE:	09-MAY-2005
PROJECT LEADER:	DELLASANTA
DRAWN BY:	SQUAD B
DESIGNED BY:	SQUAD B
CHECKED BY:	SQUAD B
IPARM FILE NAME:	dc060I25.i
SHEET	130 OF 450

NOTES:
1. ALL SIDE ROAD RADII SHALL BE 1M UNLESS OTHERWISE NOTED, REFER TO STD B-12M
2. ALL DRIVE RADII SHALL BE 6M UNLESS OTHERWISE NOTED, REFER TO STD B-7M