

CONSTRUCT DRIVE
 STA 8+060.000 LT GRAVEL
 STA 8+118.000 LT GRAVEL
 REV 8+309.000 LT GRAVEL
 STONE FILL TYPE II 8+330.000
 STA 8+040.000 TO REV STA 8+339.720 RT

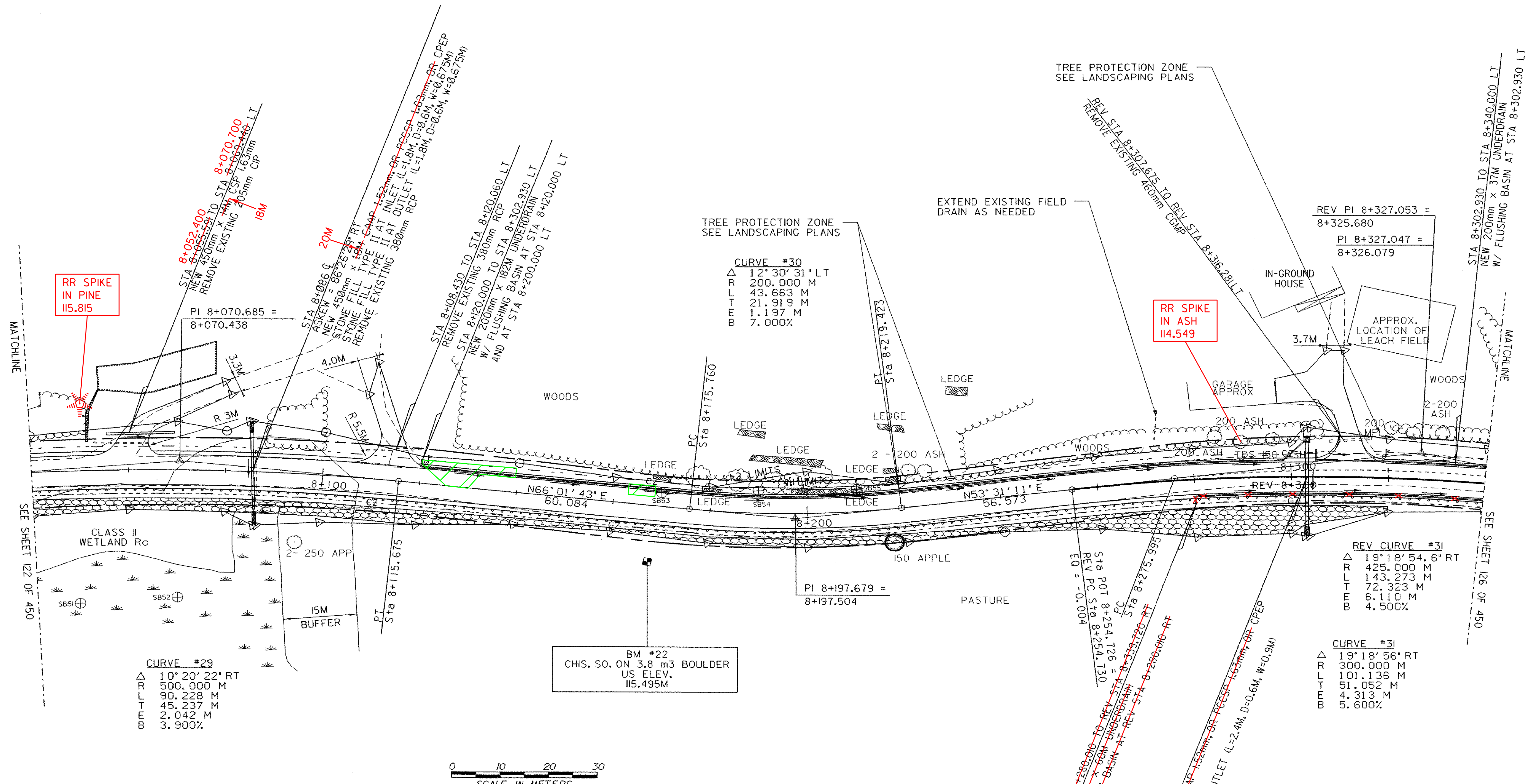
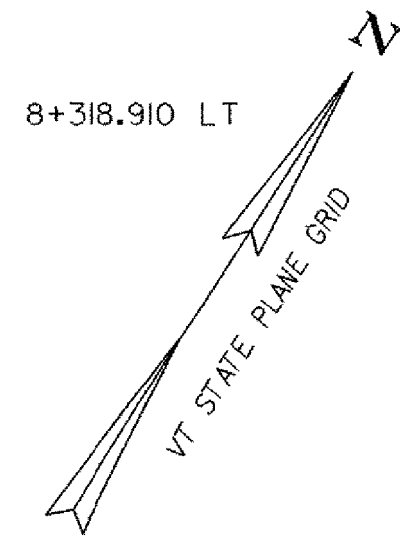
CONSTRUCT SPECIAL DITCH
 STA 8+065.000 TO STA 8+080.000 LT
 STA 8+180.000 TO STA 8+220.000 LT
 REV STA 8+316.000 TO REV STA 8+357.000 LT

GRUBBING MATERIAL 8+330.000
 STA 8+040.000 TO REV STA 8+339.720 RT

EROSION MATTING (JUTE) 8+330.000
 STA 8+040.000 TO REV STA 8+339.720 RT

STEEL BEAM GUARDRAIL
 STA 8+040.000 TO REV STA 8+339.720 RT

RELOCATE MAIL BOX, SINGLE SUPPORT
 STA 8+118.000 RT TO 8+121.4282 LT
 REV STA 8+309.890 RT TO REV STA 8+318.910 LT



MATCHLINE
SEE SHEET 122 OF 450

MATCHLINE
SEE SHEET 126 OF 450



○ DENOTES TREE OR STUMP REMOVAL

NOTES:
 1. ALL SIDE ROAD RADII SHALL BE 11M UNLESS OTHERWISE NOTED. REFER TO STD B-12M
 2. ALL DRIVE RADII SHALL BE 6M UNLESS OTHERWISE NOTED. REFER TO STD B-71M

PROJECT NAME:	HIGHGATE - FRANKLIN
PROJECT NUMBER:	STP RS 030(I) SA
FILE NAME:	...85c060/design/dc060bdr.dgn
PLOT DATE:	09-MAY-2005
PROJECT LEADER:	DELLASANTA
DRAWN BY:	SQUAD B
DESIGNED BY:	SQUAD B
CHECKED BY:	SQUAD B
IPARM FILE NAME:	dc060i22.1
SHEET	124 OF 450