

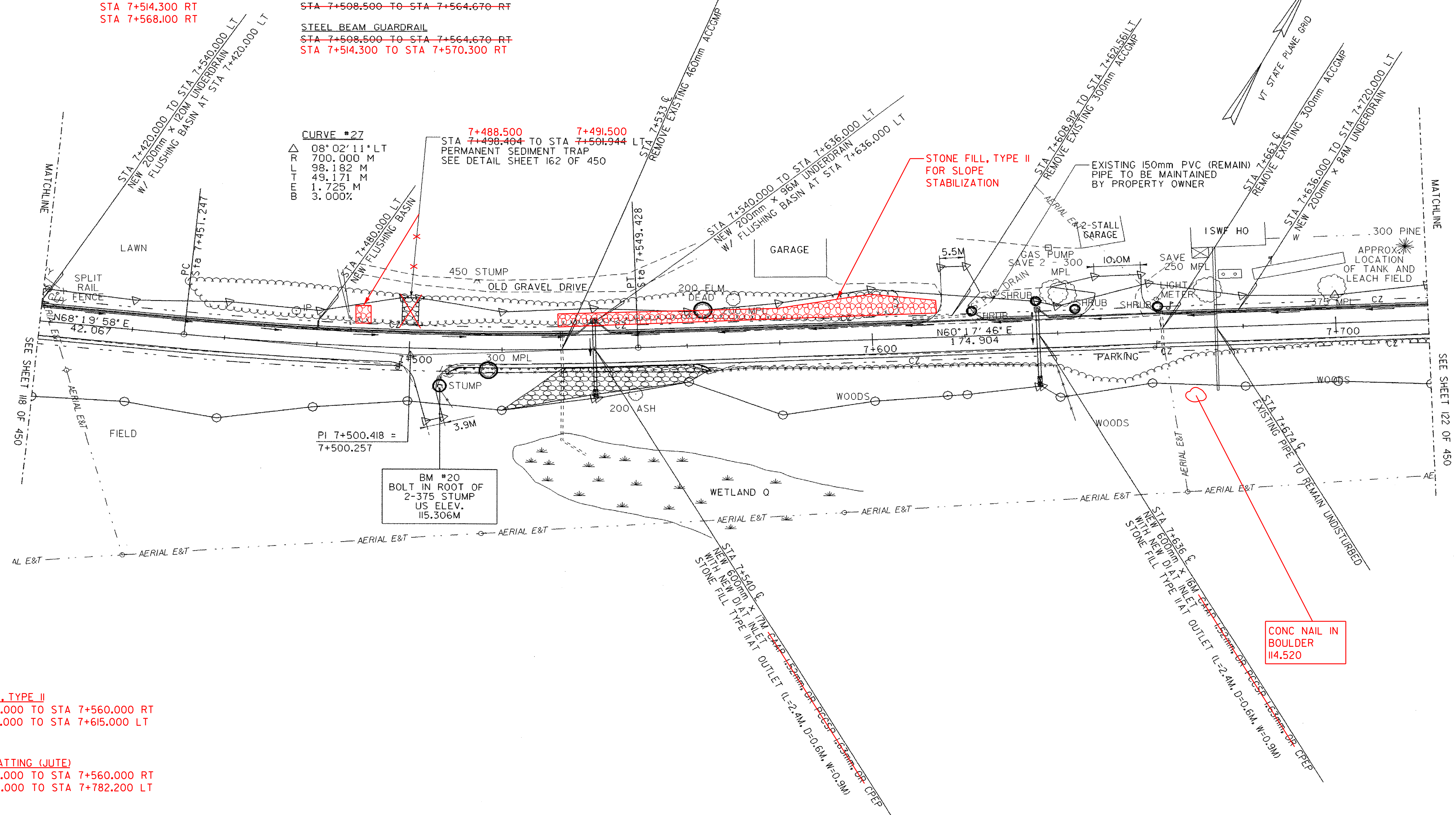
CONSTRUCT DRIVE  
 STA 7+504.000 RT GRAVEL  
 STA 7+618.000 LT PAVED  
 STA 7+653.000 LT PAVED

STONE FILL, TYPE II SEE BELOW  
 STA 7+508.500 TO STA 7+564.670 RT  
 GRUBBING MATERIAL  
 STA 7+508.500 TO STA 7+564.670 RT  
 STA 7+530.000 TO STA 7+560.000 RT  
 EROSION MATTING (JUTE) SEE BELOW  
 STA 7+508.500 TO STA 7+564.670 RT  
 STA 7+514.300 TO STA 7+570.300 RT

RELOCATE MAIL BOX, SINGLE SUPPORT  
 STA 7+508.211 RT  
 STA 7+661.000 RT TO STA 7+644.030 LT

CONSTRUCT SPECIAL DITCH  
 STA 7+420.000 TO STA 7+496.500 LT  
 STA 7+503.500 TO STA 7+615.250 LT  
 STA 7+620.750 TO STA 7+648.250 LT  
 STA 7+675.750 TO STA 7+720.000 LT

REMOVING AND RESETTING FENCE  
 STA 7+506.250 TO STA 7+639.500 RT  
 STA 7+506.250 RT - 9M BACK  
 STA 7+639.500 RT - 3M BACK



STONE FILL, TYPE II  
 STA 7+530.000 TO STA 7+560.000 RT  
 STA 7+532.000 TO STA 7+615.000 LT

EROSION MATTING (JUTE)  
 STA 7+530.000 TO STA 7+560.000 RT  
 STA 7+660.000 TO STA 7+782.200 LT



○ DENOTES TREE OR STUMP REMOVAL

NOTES:  
 1. ALL SIDE ROAD RADII SHALL BE 11M UNLESS OTHERWISE NOTED. REFER TO STD B-12M  
 2. ALL DRIVE RADII SHALL BE 6M UNLESS OTHERWISE NOTED. REFER TO STD B-71M

PROJECT NAME:	HIGHGATE - FRANKLIN
PROJECT NUMBER:	STP RS 030(I) SA
FILE NAME:	...85c060/design/dc060bdr.dgn
PLOT DATE:	09-MAY-2005
PROJECT LEADER:	DELLASANTA
DRAWN BY:	SQUAD B
DESIGNED BY:	SQUAD B
CHECKED BY:	SQUAD B
IPARM FILE NAME:	dc060i20.1
SHEET	120 OF 450