

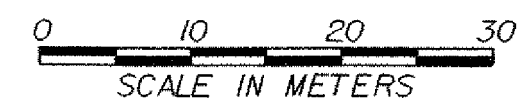
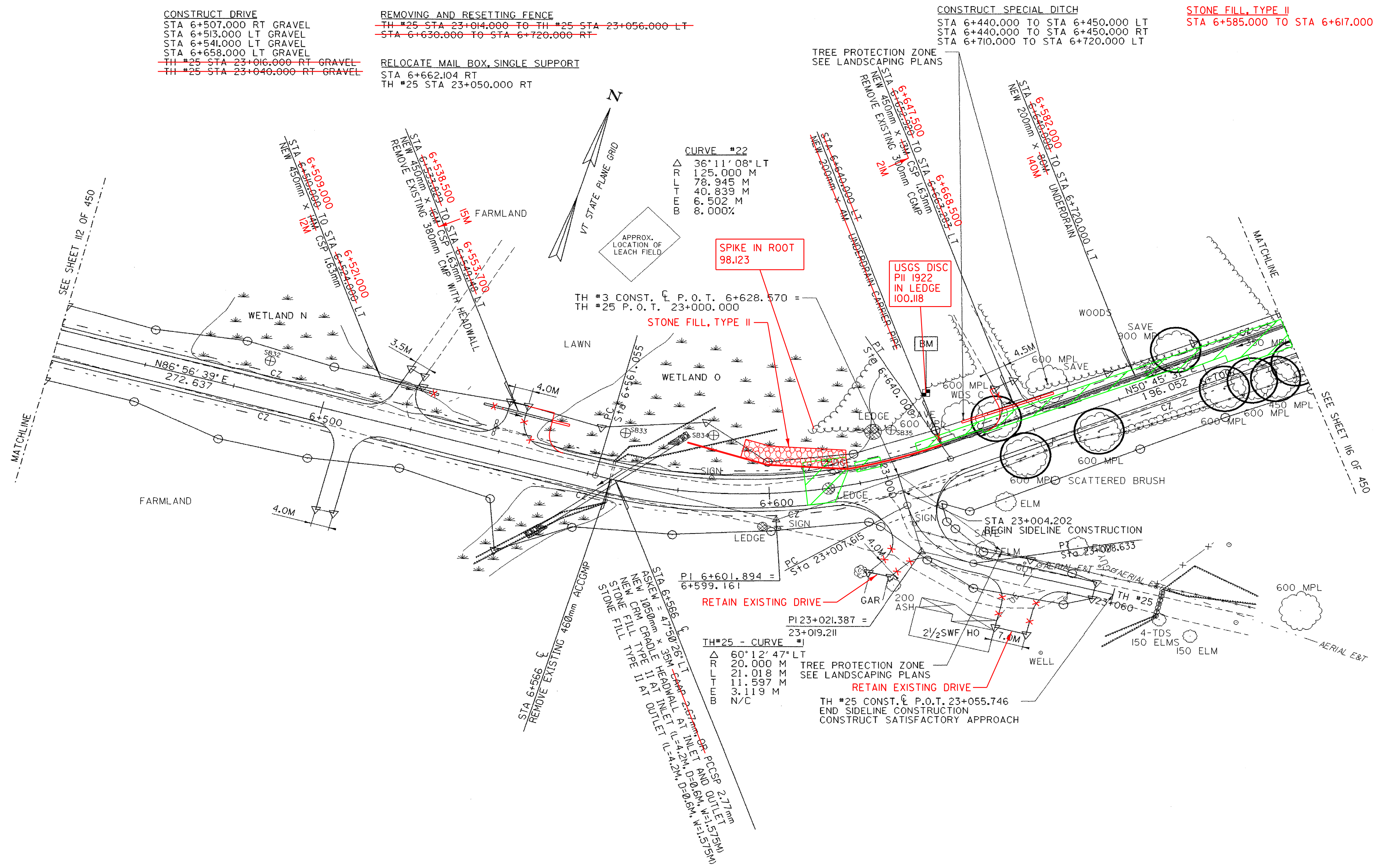
CONSTRUCT DRIVE  
 STA 6+507.000 RT GRAVEL  
 STA 6+513.000 LT GRAVEL  
 STA 6+541.000 LT GRAVEL  
 STA 6+558.000 LT GRAVEL  
 TH #25 STA 23+016.000 RT GRAVEL  
 TH #25 STA 23+046.000 RT GRAVEL

REMOVING AND RESETTING FENCE  
 TH #25 STA 23+014.000 TO TH #25 STA 23+056.000 LT  
 STA 6+630.000 TO STA 6+720.000 RT

RELOCATE MAIL BOX, SINGLE SUPPORT  
 STA 6+662.104 RT  
 TH #25 STA 23+050.000 RT

CONSTRUCT SPECIAL DITCH  
 STA 6+440.000 TO STA 6+450.000 LT  
 STA 6+440.000 TO STA 6+450.000 RT  
 STA 6+710.000 TO STA 6+720.000 LT

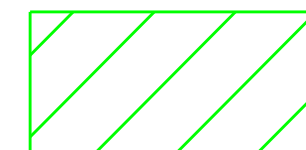
STONE FILL, TYPE II  
 STA 6+585.000 TO STA 6+617.000 LT



○ DENOTES TREE OR STUMP REMOVAL

NOTES:  
 1. ALL SIDE ROAD RADII SHALL BE 11M UNLESS OTHERWISE NOTED. REFER TO STD B-12M  
 2. ALL DRIVE RADII SHALL BE 6M UNLESS OTHERWISE NOTED. REFER TO STD B-71M

BLASTED AREA



PROJECT NAME:	HIGHGATE - FRANKLIN
PROJECT NUMBER:	STP RS 0301(1) SA
FILE NAME: ...85c060/design/dc060bdr.dgn	PLOT DATE: 09-MAY-2005
PROJECT LEADER: DELLASANTA	DRAWN BY: SQUAD B
DESIGNED BY: SQUAD B	CHECKED BY: SQUAD B
IPARM FILE NAME: dc060117.1	SHEET 114 OF 450