

CONSTRUCT DRIVE

~~STA 4+847.000 LT GRAVEL~~
~~STA 4+847.000 RT GRAVEL~~
~~STA 4+872.000 LT GRAVEL~~
~~STA 4+935.000 LT GRAVEL~~
~~STA 4+842.000 LT GRAVEL~~
~~STONE FILL, TYPE II~~
~~STA 4+998.230 TO STA 5+062.740 LT~~
~~STA 5+009.649 TO STA 5+036.000 RT~~
~~STA 5+020.000 TO STA 5+048.000 LT~~
~~STA 5+010.000 TO STA 5+036.000 RT~~

STEEL BEAM GUARDRAIL

~~STA 5+013.312 TO STA 5+047.532 LT~~
~~STA 5+024.731 TO STA 5+042.267 RT~~
~~STA 5+011.300 TO STA 5+041.800 LT~~
~~STA 5+014.600 TO STA 5+048.900 RT~~
EROSION MATTING (JUTE)
~~STA 4+998.230 TO STA 5+062.740 LT~~
~~STA 5+009.649 TO STA 5+036.000 RT~~
~~STA 5+020.000 TO STA 5+048.000 LT~~

MANUFACTURED TERMINAL SECTION (TANGENT)

~~STA 4+998.071 TO STA 5+013.312 LT~~
~~STA 5+009.491 TO STA 5+024.731 RT~~
~~STA 5+047.532 TO STA 5+062.772 LT~~
~~STA 4+999.400 TO STA 5+014.600 RT~~
~~STA 5+041.800 TO STA 5+057.000 LT~~

ANCHOR FOR STEEL RAIL

~~STA 5+042.267 RT~~
~~STA 5+045.100 RT~~
~~STA 5+015.100 LT~~

RELOCATE MAIL BOX, SINGLE SUPPORT

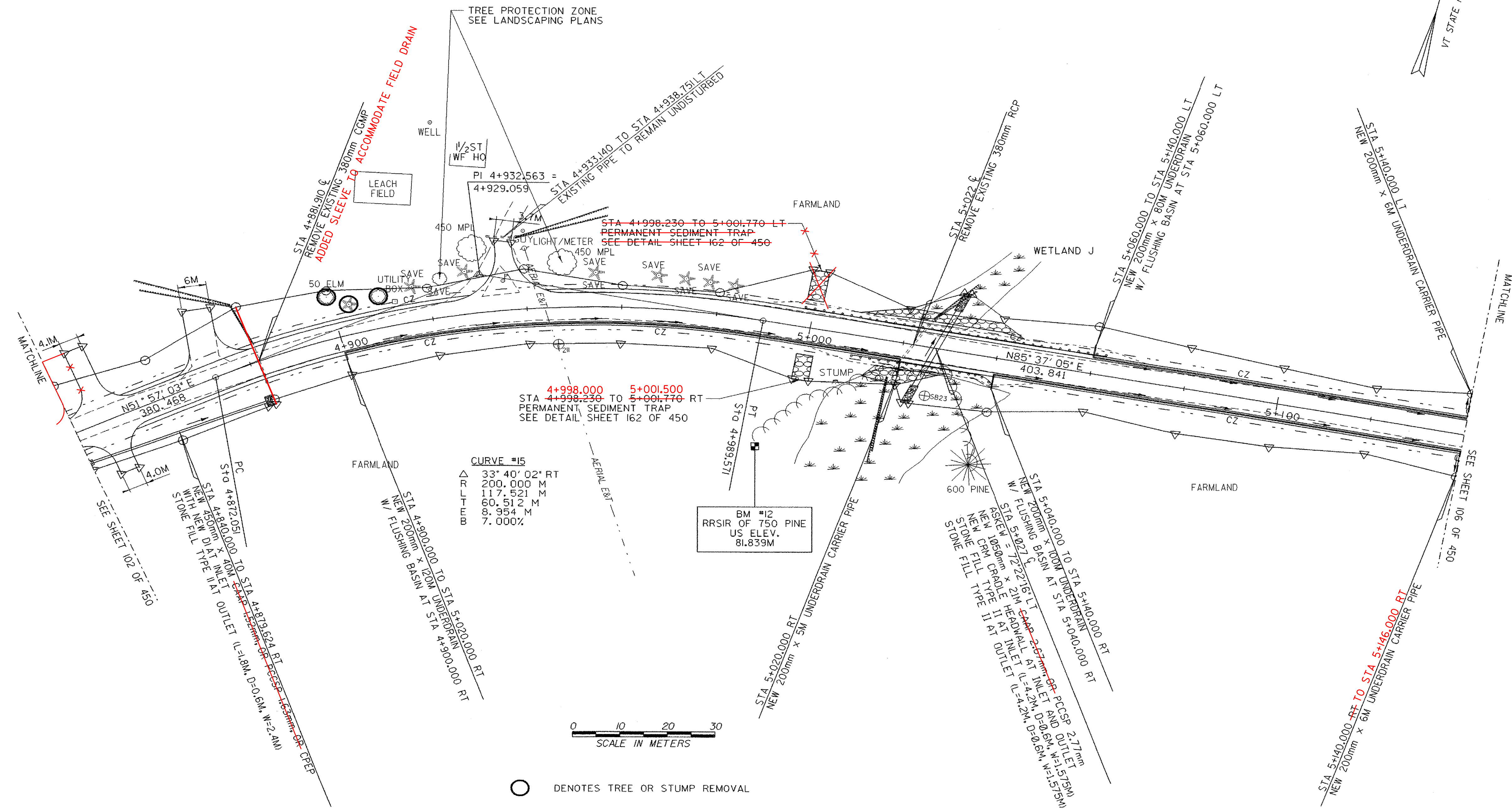
STA 4+935.500 LT

CONSTRUCT SPECIAL DITCH

~~STA 4+820.000 TO STA 4+843.250 RT~~
~~STA 4+890.000 TO STA 4+990.000 RT~~
~~STA 5+070.000 TO STA 5+130.000 RT~~
~~STA 5+070.000 TO STA 5+130.000 LT~~

GRUBBING MATERIAL

~~STA 4+998.230 TO STA 5+062.740 LT~~
~~STA 5+009.649 TO STA 5+036.000 RT~~
~~STA 5+020.000 TO STA 5+048.000 LT~~
~~STA 5+010.000 TO STA 5+036.000 RT~~



- NOTES:**
1. ALL SIDE ROAD RADII SHALL BE 11M UNLESS OTHERWISE NOTED. REFER TO STD B-12M
 2. ALL DRIVE RADII SHALL BE 6M UNLESS OTHERWISE NOTED. REFER TO STD B-7M

PROJECT NAME:	HIGHGATE - FRANKLIN
PROJECT NUMBER:	STP RS 030(K) SA
FILE NAME:	...85c060/design/dc060bdr.dgn
PROJECT LEADER:	DELLASANTA
DESIGNED BY:	SQUAD B
IPARM FILE NAME:	dc060i12.i
PLOT DATE:	09-MAY-2005
DRAWN BY:	SQUAD B
CHECKED BY:	SQUAD B
SHEET	104 OF 450