

STEEL BEAM GUARDRAIL
 STA 2+831.421 TO STA 2+854.221 LT
 STA 2+831.421 TO STA 2+854.221 RT
 STA 2+833.200 TO STA 2+856.100 LT

GRUBBING MATERIAL
 STA 2+816.217 TO STA 2+869.494 LT
 STA 2+816.217 TO STA 2+869.494 RT

REMOVING AND RESETTING FENCE
 STA 2+981.280 TO STA 3+008.210 RT
 STA 2+981.280 RT - 2M BACK
 STA 3+008.210 RT - 4.5M BACK
 STA 3+099.000 TO STA 3+100.000 LT
 STA 3+099.000 LT - 4M BACK

SLEEVES FOR UTILITIES (115 mm DIAMETER)(MOD)
 STA 2+740.000 TO STA 2+830.000 LT

MANUFACTURED TERMINAL SECTION (TANGENTIAL)
 STA 2+816.217 TO STA 2+831.421 RT
 STA 2+854.221 TO STA 2+869.461 RT
 STA 2+816.222 TO STA 2+831.421 LT
 STA 2+854.221 TO STA 2+869.461 LT
 STA 2+818.000 TO STA 2+833.200 LT
 STA 2+856.100 TO STA 2+871.300 LT

STONE FILL, TYPE II
 STA 2+816.217 TO STA 2+869.494 LT
 STA 2+816.217 TO STA 2+869.494 RT } 1 ON 2 SLOPE

CONSTRUCT DRIVE
 STA 2+983.000 LT GRAVEL
 STA 3+037.000 RT GRAVEL
 STA 3+068.000 LT GRAVEL
 STA 2+965.000 RT GRAVEL

EROSION MATTING (JUTE) SEE BELOW
 STA 2+816.217 TO STA 2+869.494 LT
 STA 2+816.217 TO STA 2+869.494 RT

RELOCATE MAIL BOX, SINGLE SUPPORT
 STA 3+042.750 LT
 STA 3+077.850 LT

CONSTRUCT SPECIAL DITCH
 STA 2+890.000 TO STA 2+910.000 RT
 STA 2+950.000 TO STA 2+979.500 LT
 STA 2+950.000 TO STA 3+030.500 RT
 STA 2+986.500 TO STA 3+030.000 LT
 STA 3+045.000 TO STA 3+090.000 RT

EROSION MATTING (JUTE)
 STA 2+980.000 TO STA 3+030.000 RT
 STA 3+013.000 TO STA 3+060.000 LT
 STA 3+048.000 TO STA 3+100.000 RT
 STA 3+075.000 TO STA 3+100.000 LT

STA 3+098.230 TO STA 3+100.000 LT
 PERMANENT SEDIMENT TRAP
 SEE DETAIL SHEET 162 OF 450

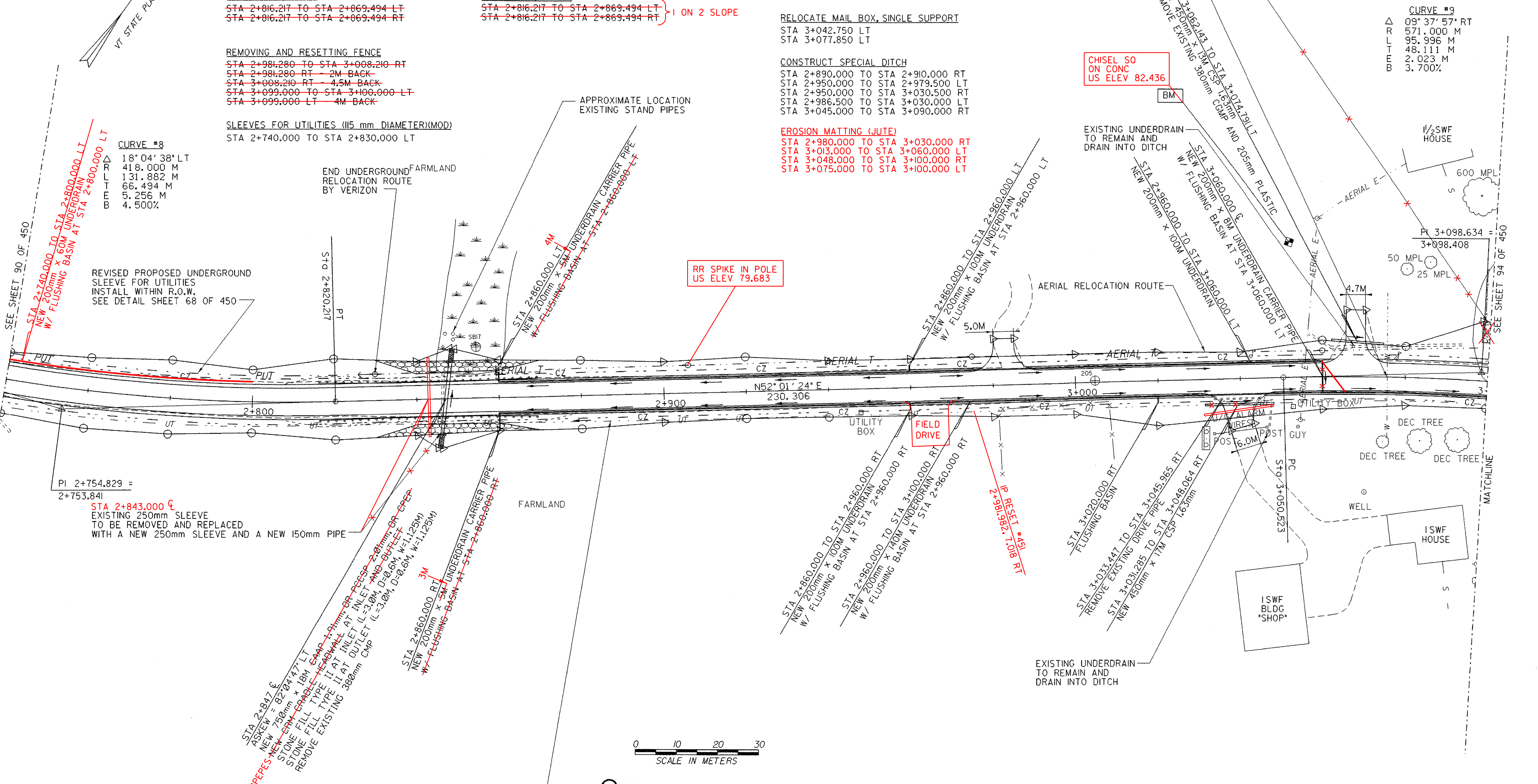
EXISTING WATER LINE TO
 REMAIN UNDISTURBED

CURVE #9
 Δ 09° 37' 57" RT
 571.000 M
 95.996 M
 48.111 M
 2.023 M
 3.700%

CURVE #8
 18° 04' 38" LT
 418.000 M
 131.882 M
 66.494 M
 5.256 M
 4.500%

REVISED PROPOSED UNDERGROUND
 SLEEVE FOR UTILITIES
 INSTALL WITHIN R.O.W.
 SEE DETAIL SHEET 68 OF 450

RR SPIKE IN POLE
 US ELEV 79.683



○ DENOTES TREE OR STUMP REMOVAL

- NOTES:**
1. ALL SIDE ROAD RADII SHALL BE 11M UNLESS OTHERWISE NOTED. REFER TO STD B-12M
 2. ALL DRIVE RADII SHALL BE 6M UNLESS OTHERWISE NOTED. REFER TO STD B-71M

PROJECT NAME:	HIGHGATE - FRANKLIN
PROJECT NUMBER:	STP RS 0301(I) SA
FILE NAME:	...85c060/design/dc060bdr.dgn
PROJECT LEADER:	DELLASANTA
DESIGNED BY:	SQUAD B
IPARM FILE NAME:	dc060106.i
PLOT DATE:	09-MAY-2005
DRAWN BY:	SQUAD B
CHECKED BY:	SQUAD B
SHEET	92 OF 450