

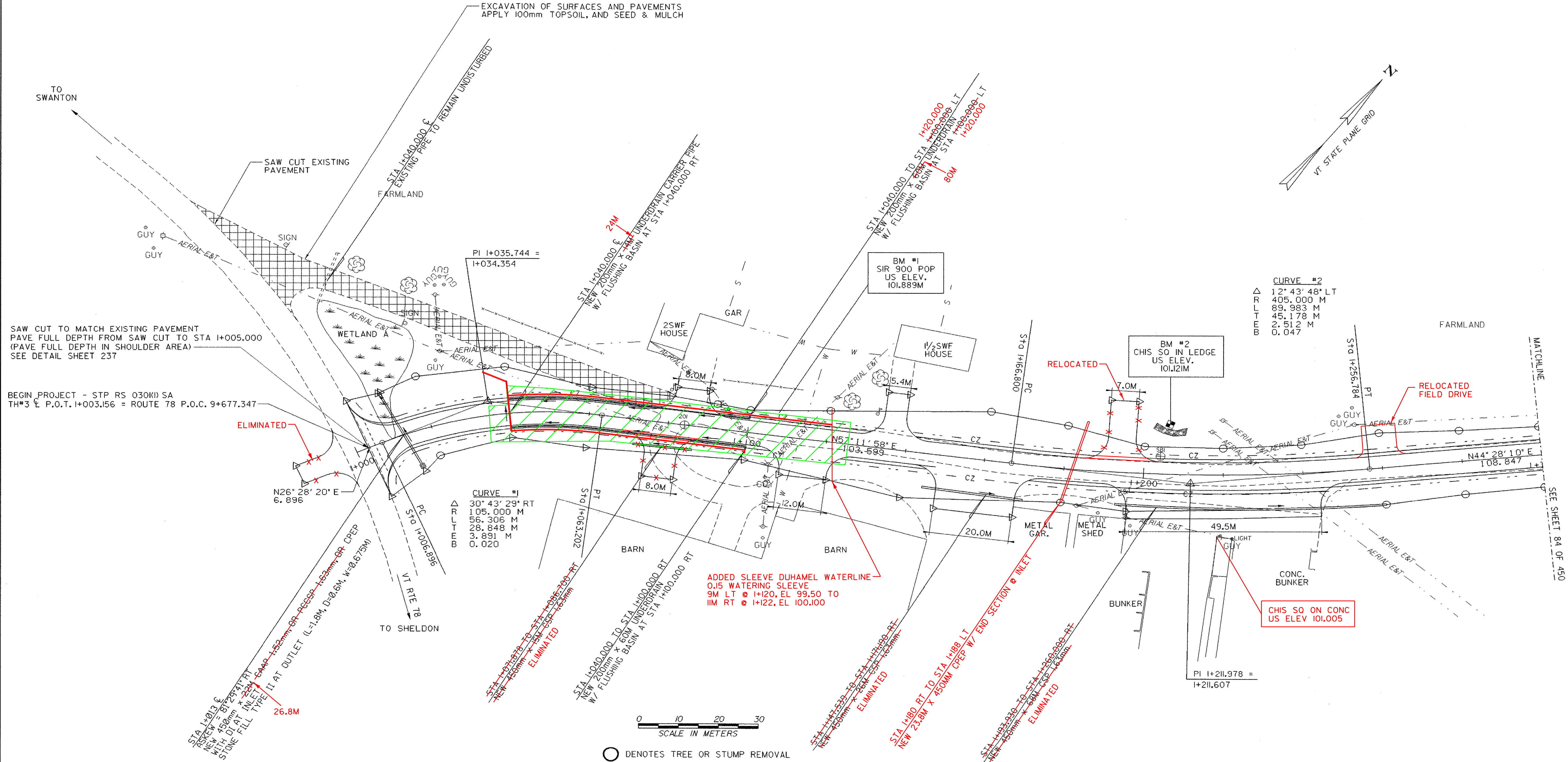
CONSTRUCT DRIVE
~~STA I+080.000 RT GRAVEL~~
~~STA I+085.000 LT GRAVEL~~
~~STA I+115.000 RT GRAVEL~~
~~STA I+136.000 LT PAVED~~
~~STA I+160.000 RT GRAVEL~~
~~STA I+194.000 LT GRAVEL~~
~~STA I+220.000 RT GRAVEL~~ PAVED
 STA I+000.00 LT GRAVEL
 STA I+267.00 LT GRAVEL

CONSTRUCT SPECIAL DITCH
 STA I+050.000 TO STA I+079.750 LT
 STA I+050.000 TO ~~STA I+074.520 RT~~
~~STA I+085.750~~ TO STA I+109.750 RT

RELOCATE MAIL BOX, SINGLE SUPPORT
 STA I+079.760 LT
 STA I+131.760 LT

EXCAVATION OF SURFACES AND PAVEMENTS
 STA I+000.000 TO STA I+080.941LT

EXCAVATION OF SURFACES AND PAVEMENTS
 APPLY 100mm TOPSOIL, AND SEED & MULCH



SAW CUT TO MATCH EXISTING PAVEMENT
 PAVE FULL DEPTH FROM SAW CUT TO STA I+005.000
 (PAVE FULL DEPTH IN SHOULDER AREA)
 SEE DETAIL SHEET 237

BEGIN PROJECT - STP RS 030(I) SA
 TH#3 P.O.T. I+003.156 = ROUTE 78 P.O.C. 9+677.347

ELIMINATED

N26° 28' 20" E
 6.896

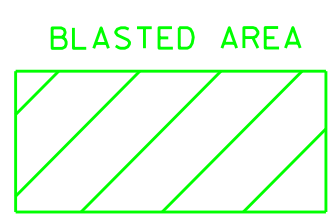
CURVE #1
 30° 43' 29" RT
 105.000 M
 56.306 M
 28.848 M
 3.891 M
 0.020

CURVE #2
 12° 43' 48" LT
 405.000 M
 89.983 M
 45.178 M
 2.512 M
 0.047



○ DENOTES TREE OR STUMP REMOVAL

- NOTES:**
1. ALL SIDE ROAD RADII SHALL BE 11M UNLESS OTHERWISE NOTED. REFER TO STD B-12M
 2. ALL DRIVE RADII SHALL BE 6M UNLESS OTHERWISE NOTED. REFER TO STD B-71M



PROJECT NAME: HIGHGATE - FRANKLIN	
PROJECT NUMBER: STP RS 030(I) SA	
FILE NAME: ...85c060/design/dc060bdr.dgn	PLOT DATE: 09-MAY-2005
PROJECT LEADER: DELLASANTA	DRAWN BY: SQUAD B
DESIGNED BY: SQUAD B	CHECKED BY: SQUAD B
IPARM FILE NAME: dc060I01	SHEET 82 OF 450