



TRAVERSE TIES

HVCTRL #616	
N = 274331.7444	
E = 462616.4459	
Z = 81.5610	
NOT TIED	

HVCTRL #617	
N = 274348.5443	
E = 463024.0381	
Z = 99.4110	
NOT TIED	

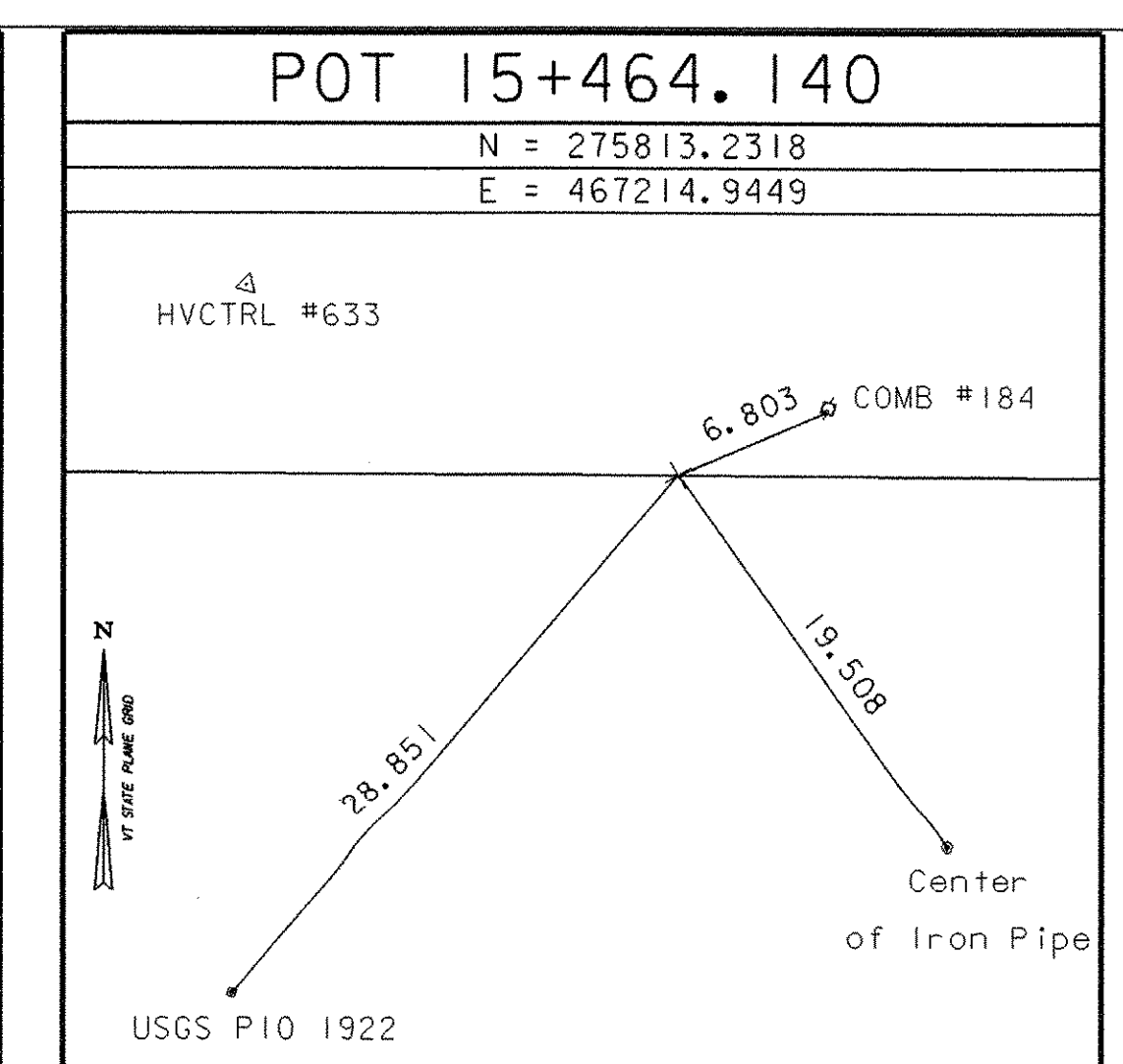
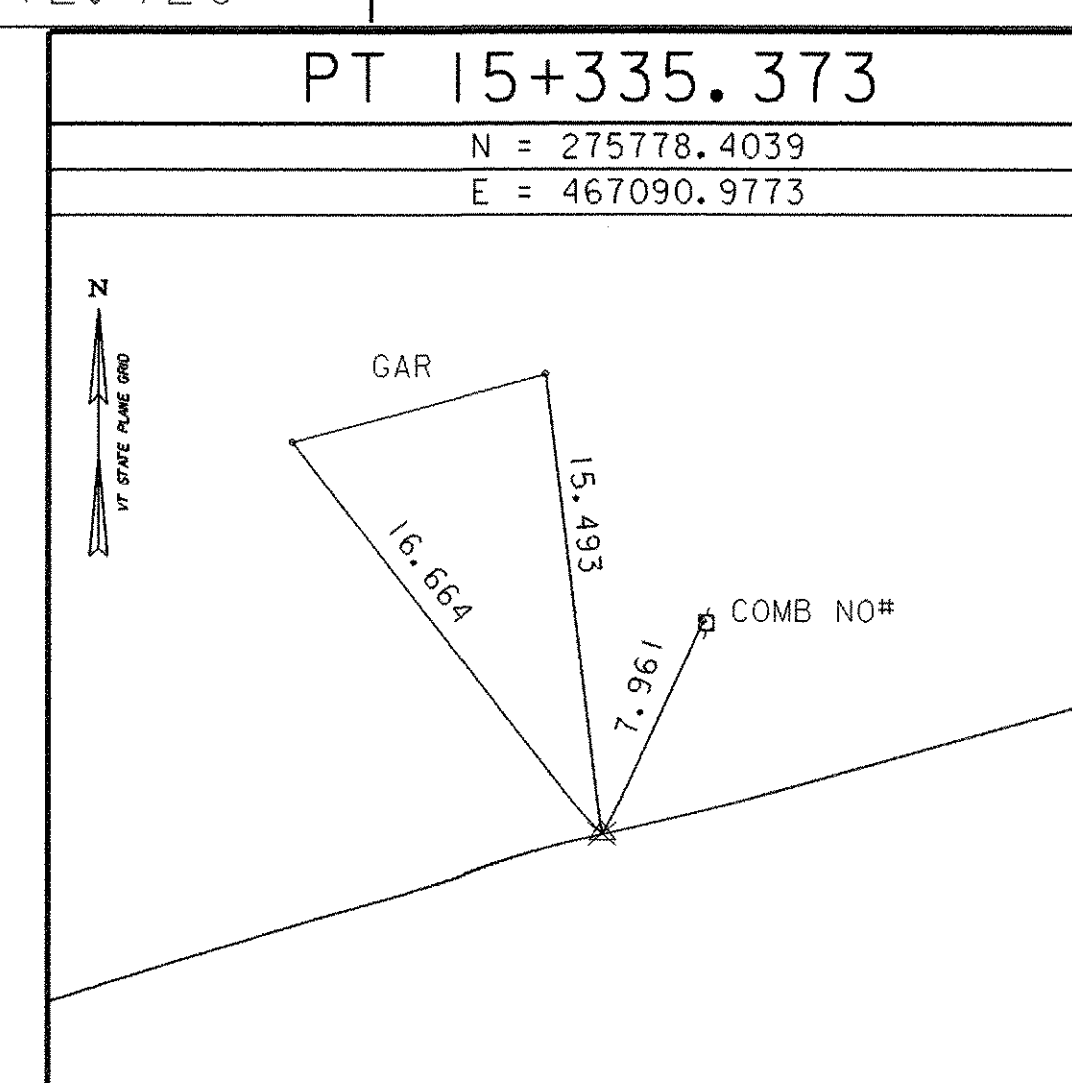
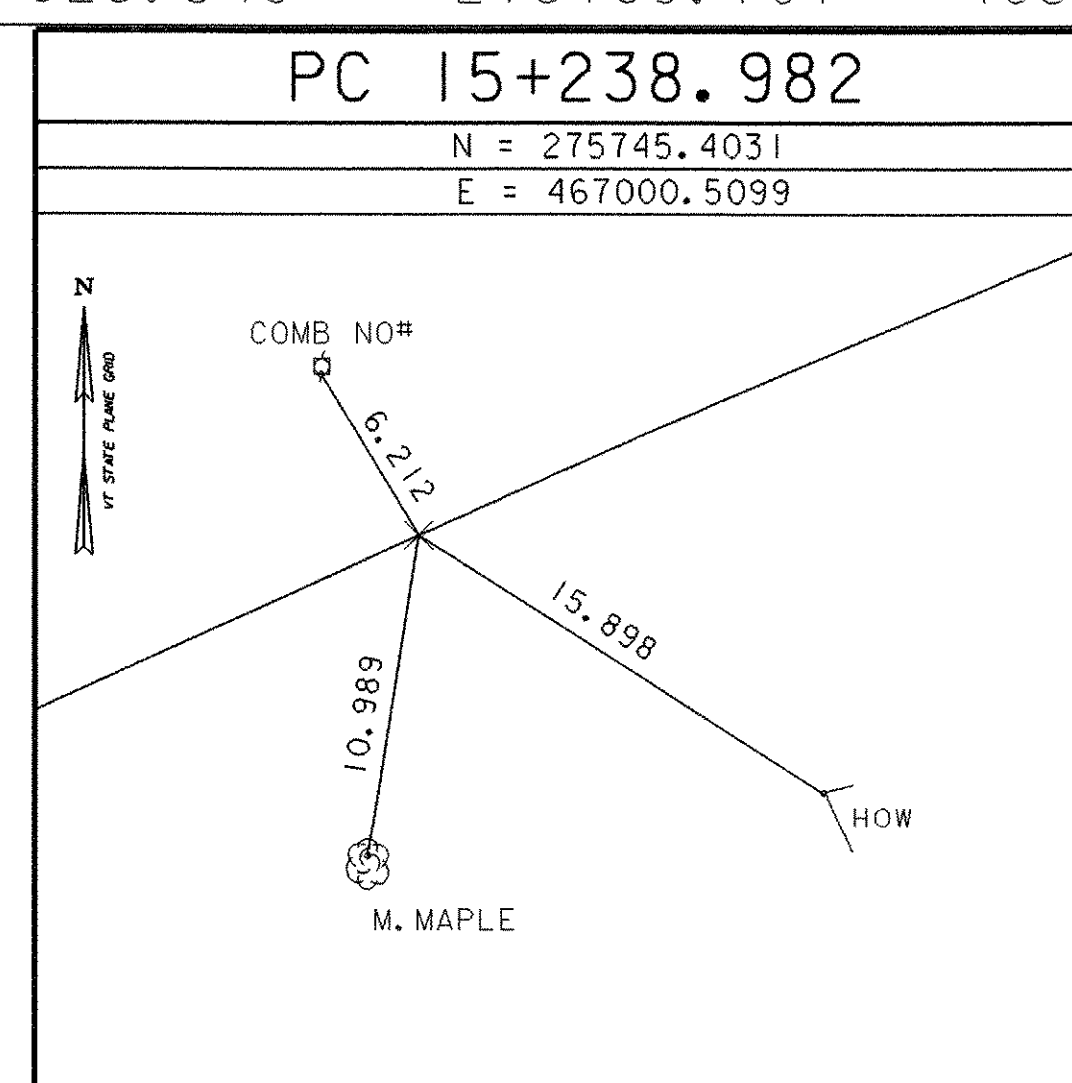
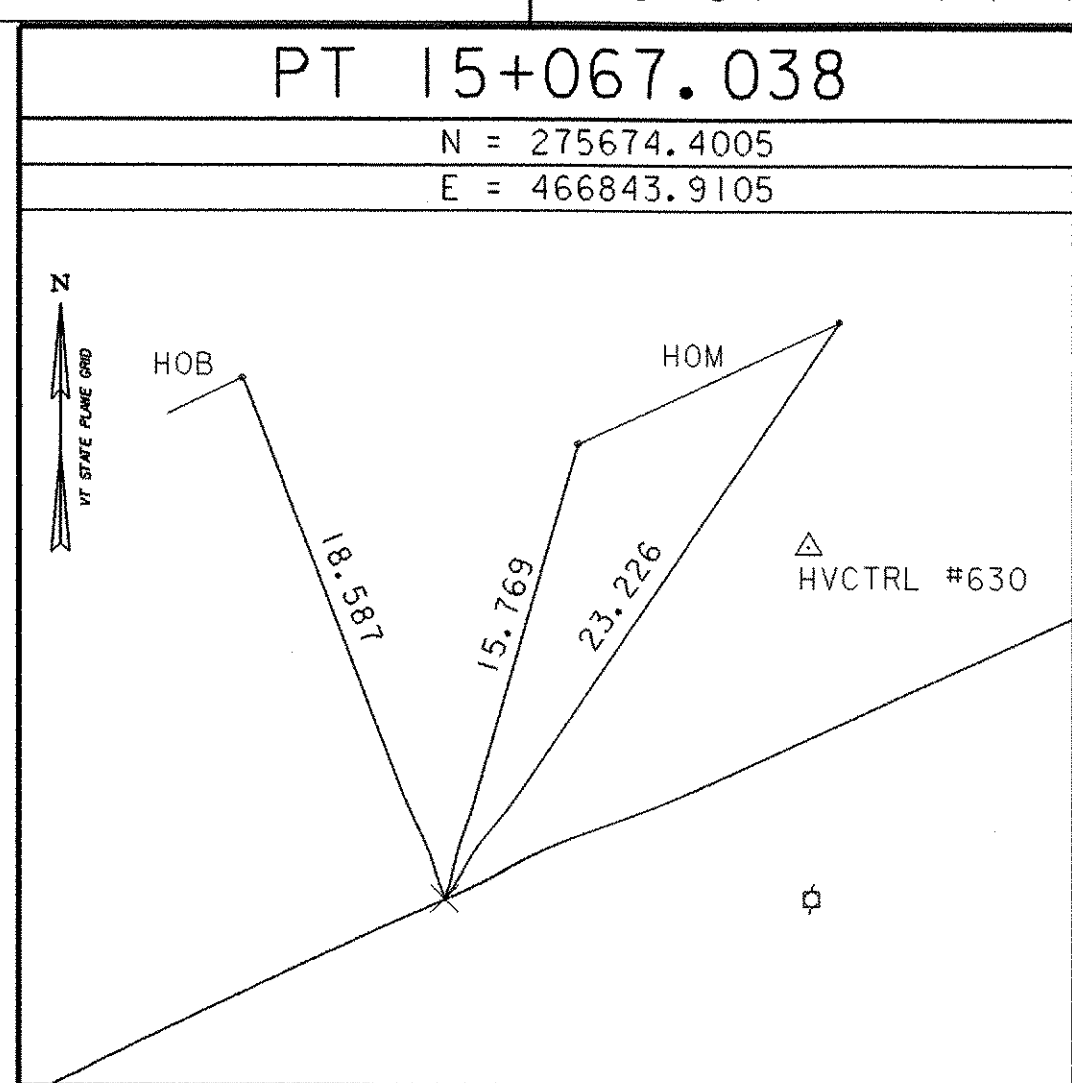
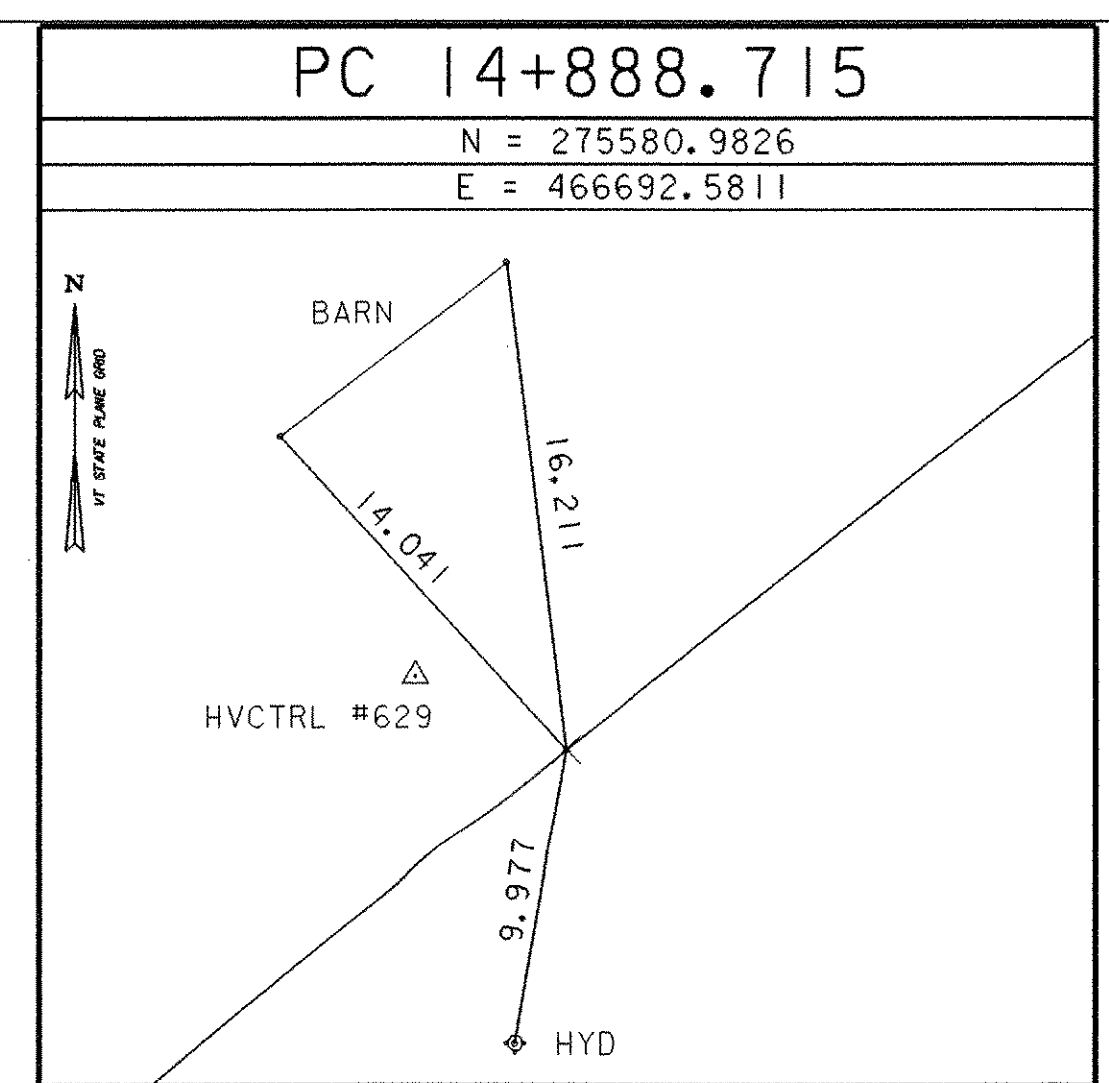
Point	Station	Northing	Easting	Elev:
3700	POT 1+000.000	271962.758	459350.512	96.951
3701	PC 1+006.896	271968.931	459353.586	
3702	PT 1+063.202	272010.380	459390.695	
3703	PC 1+166.800	272066.501	459477.776	
3704	PT 1+256.784	272123.214	459547.399	
3705	PC 1+365.631	272200.890	459623.650	
3706	PT 1+457.753	272264.057	459690.673	
3707	PC 1+623.817	272373.170	459815.858	
3708	PT 1+903.149	272561.435	460022.182	
3709	PC 2+083.818	272686.217	460152.837	
3710	PT 2+171.243	272739.276	460222.103	
3711	PC 2+351.209	272832.564	460376.003	
3712	PT 2+438.026	272868.683	460454.740	
3713	PC 2+549.933	272903.382	460561.132	
3714	PT 2+581.989	272913.808	460591.444	
3715	PC 2+688.335	272950.005	460691.440	
3716	PT 2+820.217	273013.554	460806.377	

Mainline
Coordinates good as of:
01/23/03

* MAIN TRAVERSE COMPLETED NOVEMBER 2002 BY R.GILMAN & P.WINTERS

Point	Station	Northing	Easting	Point	Station	Northing	Easting	Point	Station	Northing	Easting
3717	PC 3+050.523	273155.272	460987.918	3738	PT 5+876.559	274378.079	463405.349	3758	PC 8+025.448	275226.125	465294.801
3718	PT 3+146.519	273207.719	461068.185	3739	PC 5+981.933	274384.206	463510.545	3759	PT 8+115.675	275270.003	465373.501
3719	PC 3+287.632	273274.715	461192.380	3740	PT 6+016.666	274386.426	463545.206	3760	PC 8+175.759	275294.414	465428.402
3720	PT 3+358.757	273307.163	461255.666	3741	PC 6+140.633	274395.067	463668.871	3761	PT 8+219.422	275316.351	465466.055
3721	PC 3+408.965	273329.129	461300.814	3742	PT 6+288.418	274404.156	463816.376	REV POT 8+254.726	BK 275337.339	465494.441	
3722	PT 3+535.263	273399.949	461404.855	3743	PC 6+561.055	274418.690	464088.625	EQ PC 8+254.730	AH 275337.339	465494.441	
3723	PC 4+182.888	273837.824	461882.017	3744	PT 6+640.000	274446.701	464161.035	REV PT 8+398.003	BK 275401.681	465621.695	
3724	PT 4+236.560	273873.035	461922.516	3745	PC 6+836.052	274570.721	464312.875	EQ PT 8+398.400	AH 275401.681	465621.695	
3725	PC 4+249.907	273881.519	461932.820	3746	PT 6+942.505	274642.318	464391.585	3764	PC 8+482.890	275426.616	465702.420
3726	PT 4+317.585	273926.271	461983.572	3747	PC 7+047.888	274717.277	464465.659	3765	PT 8+558.629	275434.898	465777.250
3727	PC 4+399.172	273982.270	462042.906	3748	PT 7+199.129	274816.684	464579.462	3766	PC 9+214.040	275383.098	466430.611
3728	PT 4+491.583	274042.506	462112.945	EQ POT 7+199.062	AH 274816.684	464579.462	3767	PT 9+244.422	275391.881	466458.937	
3729	PC 4+872.051	274277.003	462412.556	3750	PC 7+228.049	274834.102	464602.632	3768	POT 9+306.288	BK 275430.802	466507.026
3731	PT 4+989.571	274318.923	462520.542	3751	PT 7+337.762	274889.917	464696.831	EQ POT 14+650.000	AH 275430.802	466507.026	
3732	PC 5+393.412	274349.779	462923.202	3752	PC 7+366.861	274901.920	464723.339	3770	PC 14+888.715	275580.983	466692.581
3733	PT 5+459.644	274352.650	462989.360	3753	PT 7+409.179	274918.464	464762.285	3771	PT 15+067.038	275674.401	466843.911
3734	PC 5+538.375	274353.456	463068.086	3754	PC 7+451.247	274933.996	464801.380	3772	PC 15+238.982	275745.403	467000.510
3735	PT 5+547.759	274353.907	463077.457	3755	PT 7+549.428	274976.517	464889.787	3773	PT 15+335.373	275778.404	467090.977
3736	PC 5+660.794	274363.603	463190.076	3756	PC 7+724.332	275063.185	465041.708	3774	POT 15+464.140	275813.232	467214.945
3737	PCC 5+722.933	274368.384	463252.030	3757	PT 7+925.349	275169.701	465212.120				

ALIGNMENT TIES



DATUM

VERTICAL	NAVD 29
HORIZONTAL	ASSUMED
ADJUSTMENT	Compass

* ALIGNMENT STAKED

ALL TIE DISTANCES ARE IN METERS

PROJECT NAME:	Highgate - Franklin
PROJECT NUMBER:	STP RS0301 (I) SA
FILE NAME:	85c060/survey/xc060t1.dgn
PROJECT LEADER:	R. B. & J. H.
DESIGNED BY:	CHECKED BY: R. Gilman
	SHEET 81 OF 450
	PLOT DATE: 09-MAY-2005