

CONTROL POINTS

HVCTRL # 635

STANDARD DISK STAMPED  
 W 48  
 N = 271970.351  
 E = 459286.783  
 ELEV. = 96.951

BM # 25

STANDARD DISK STAMPED  
 P 10  
 N = 275787.826  
 E = 467202.849  
 ELEV. = 138.054



Benchmark Disk set in rock outcrop

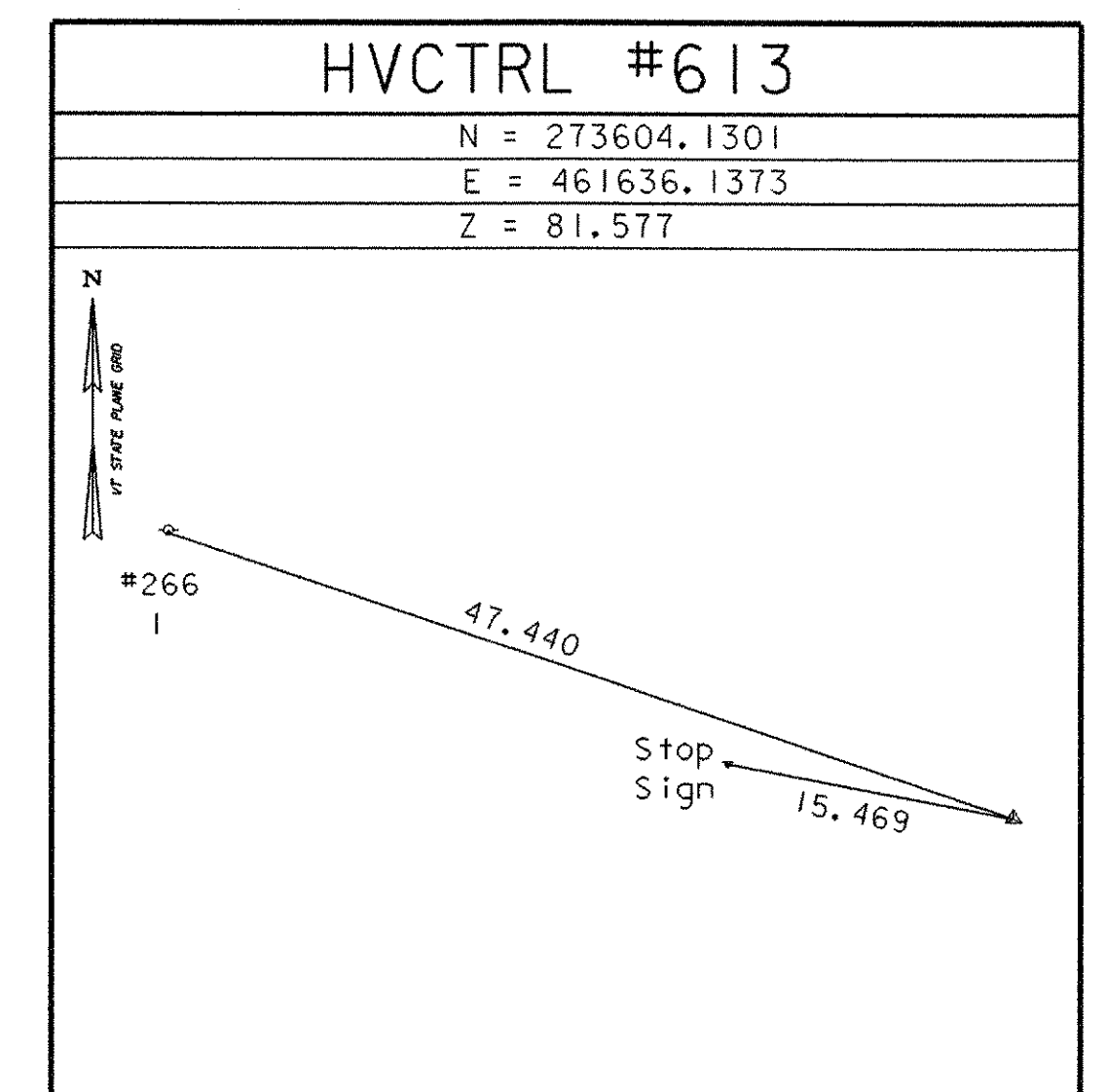
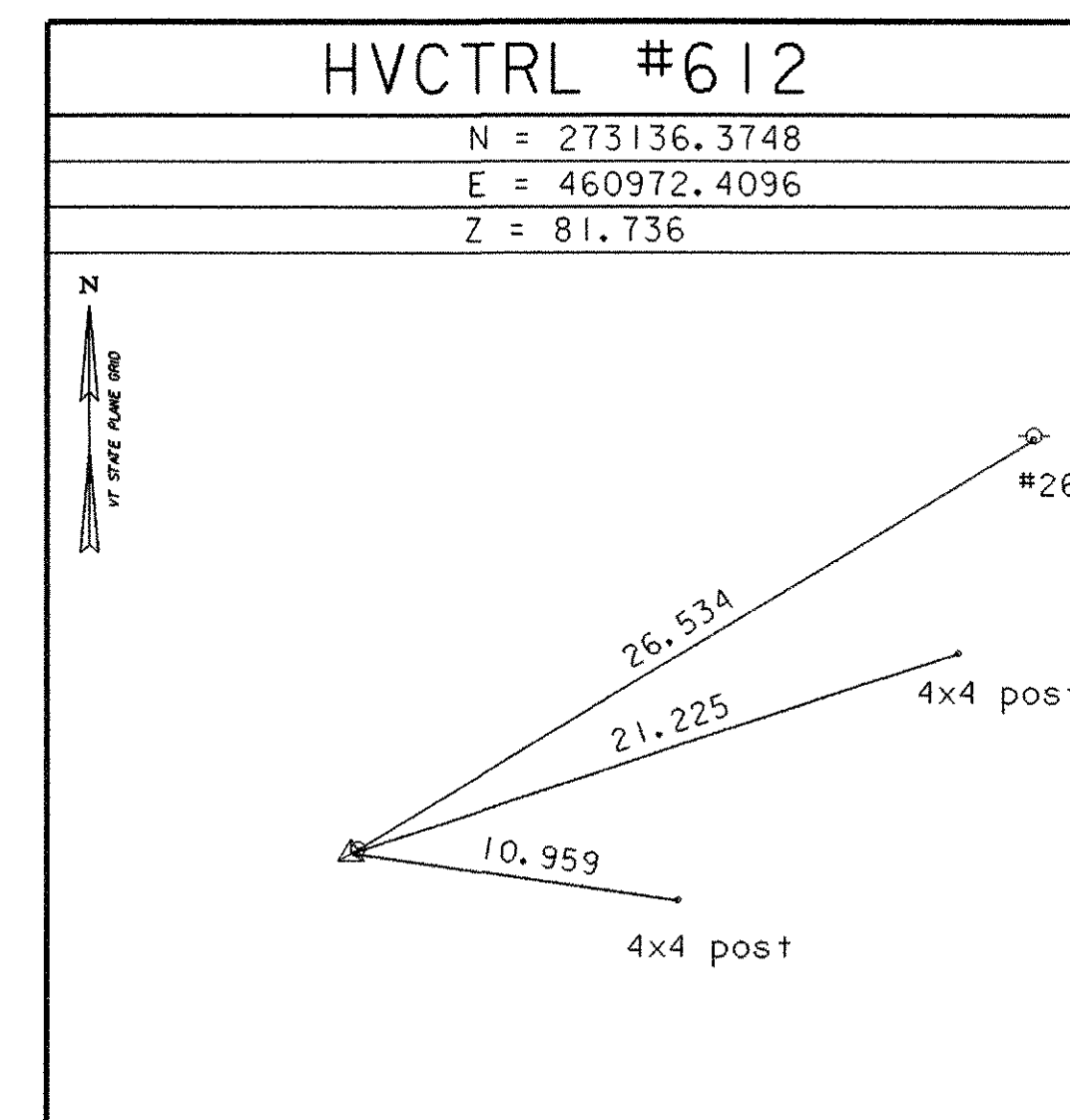
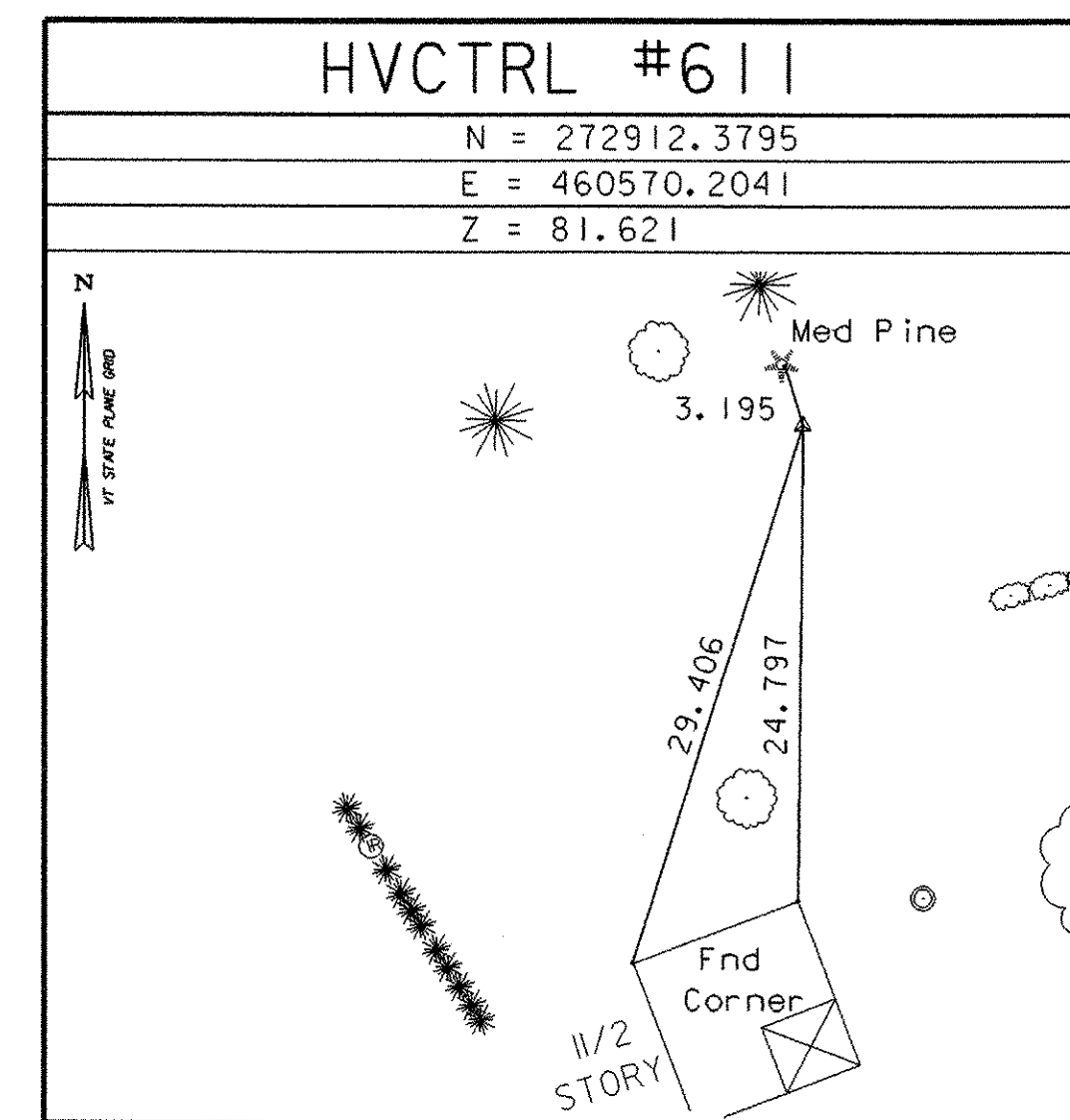
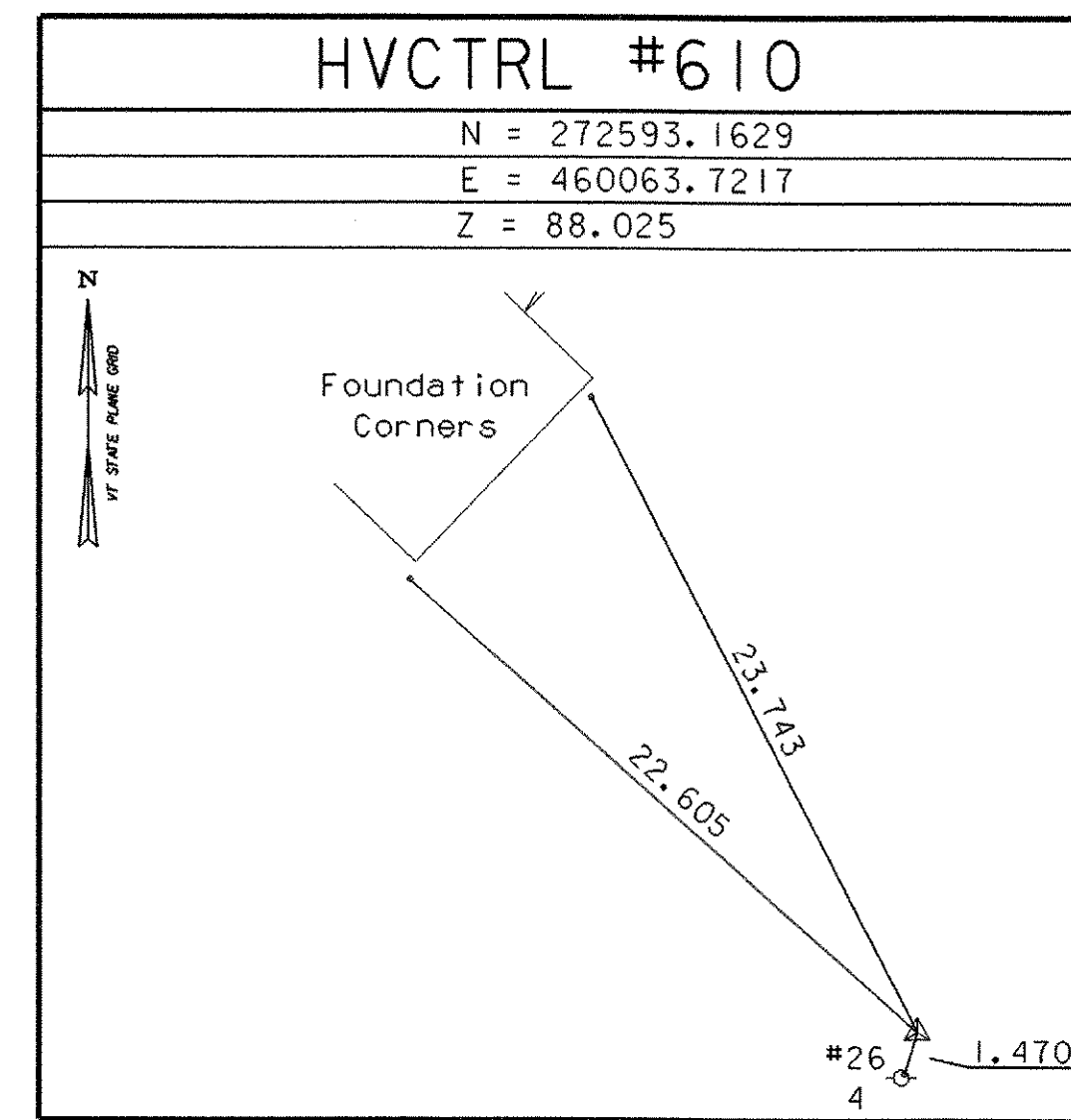
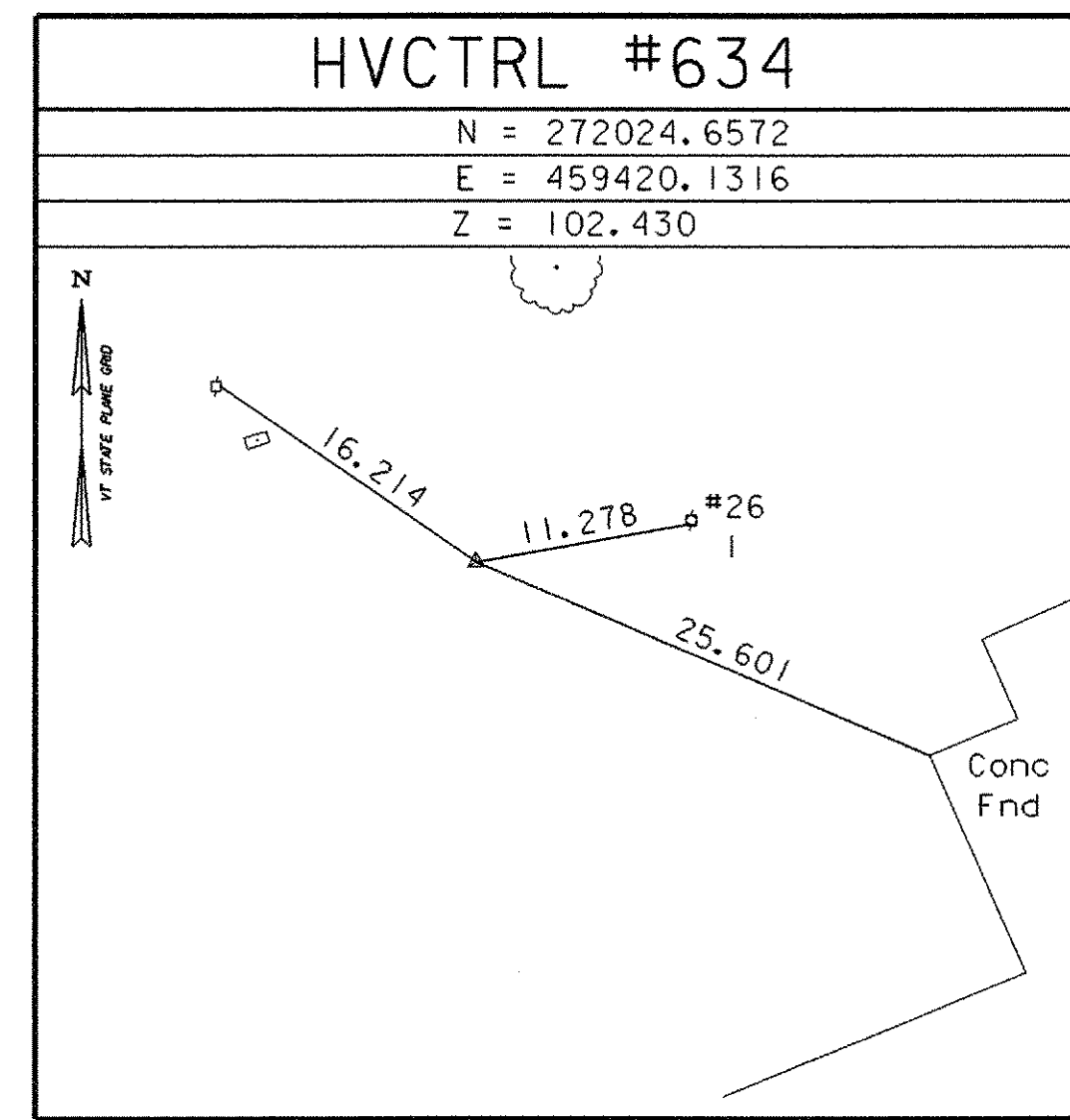
Described by National Geodetic Survey 1978  
 1.6 mi NE from Highgate Center  
 1.6 mi east along state highway 78 from the Post Office at Highgate Center, at the junction of a road leading east, at a place called Beaulieus corner, 43 ft south of the center line of highway and the road, 46 ft southeast of power pole 139n 104, 12.2 ft southwest of a northwest-southeast fence line, on the inside of a curve

Survey Disk in the top of Granite Cap on Banister

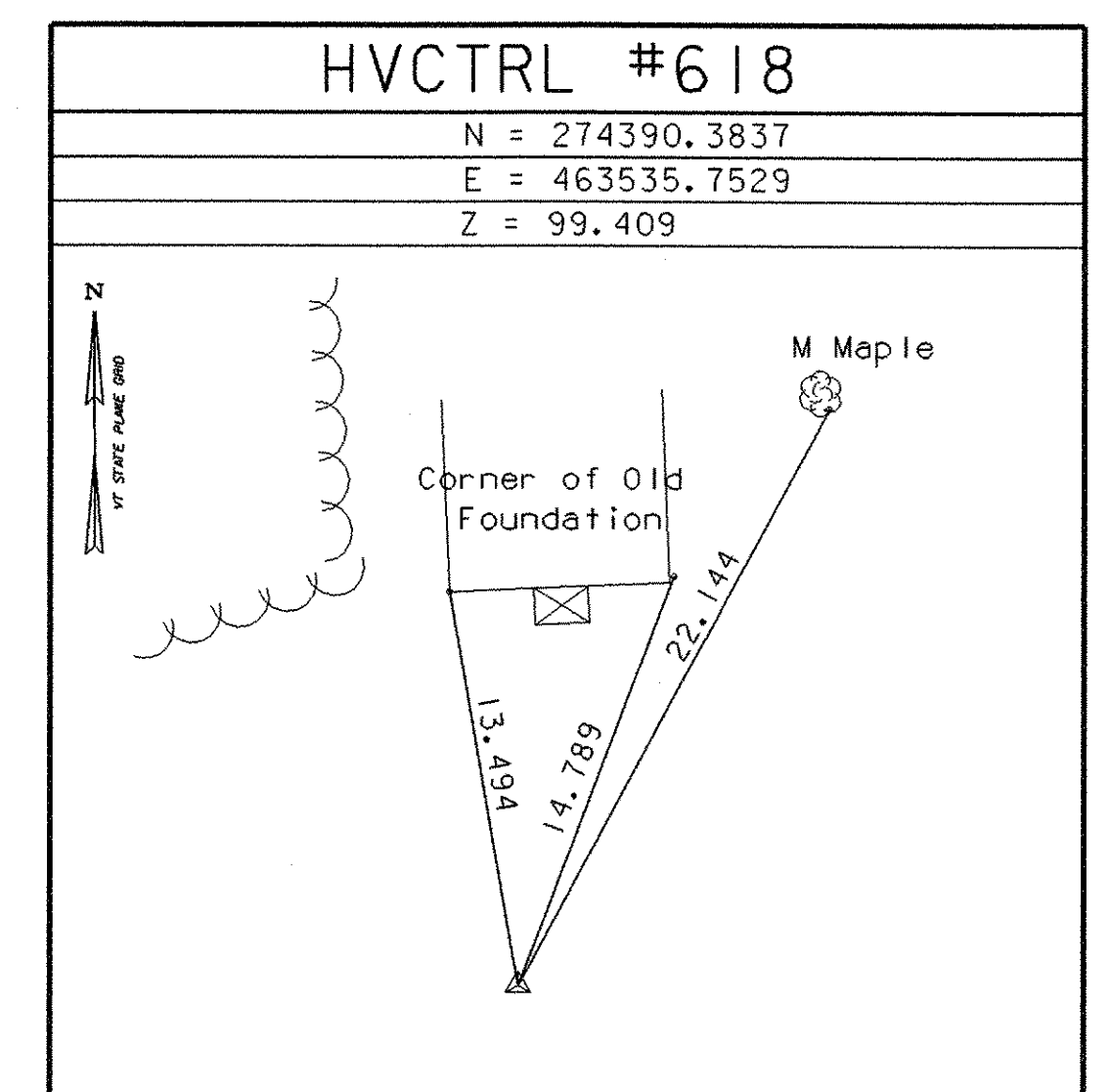
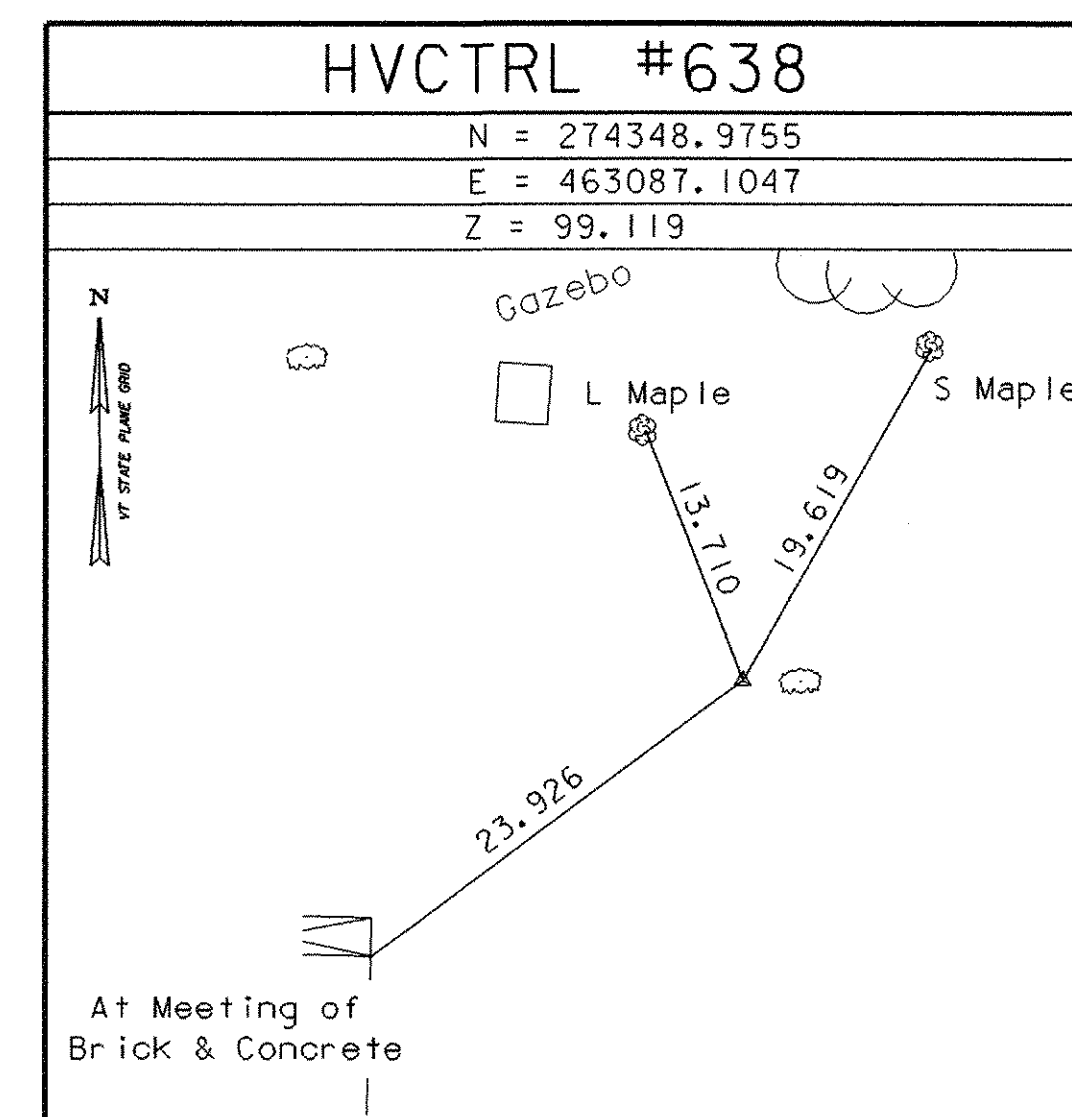
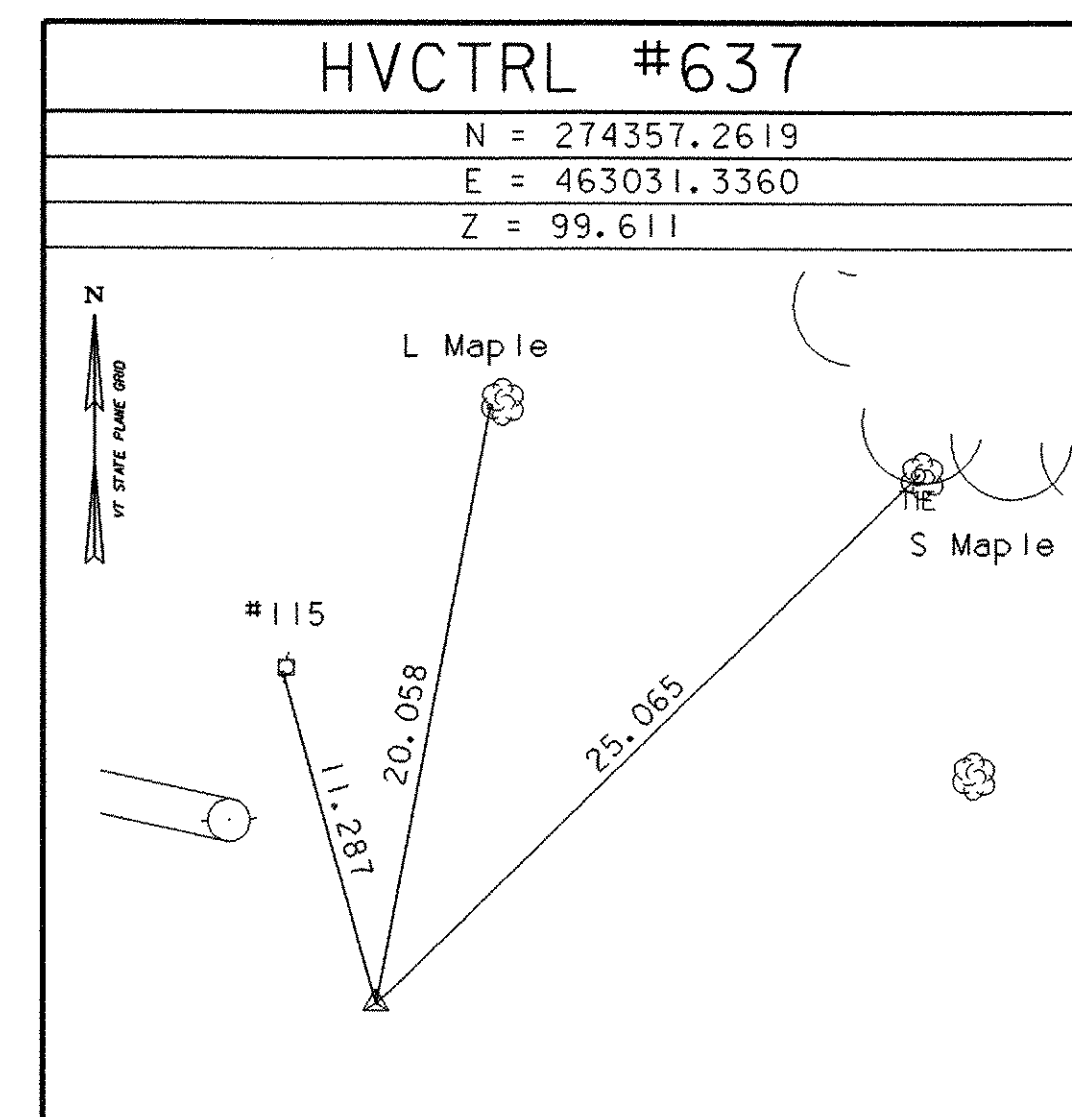
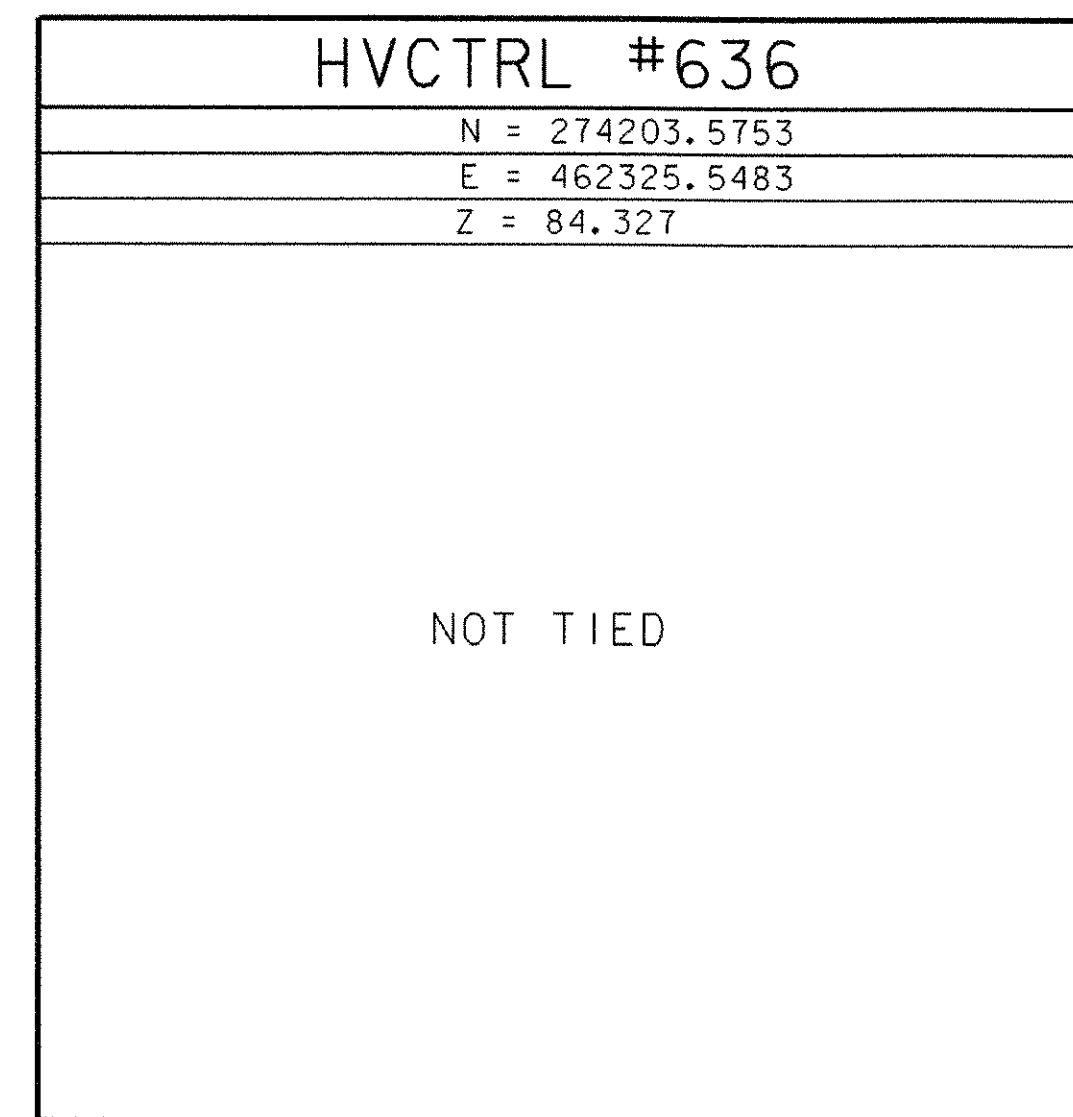
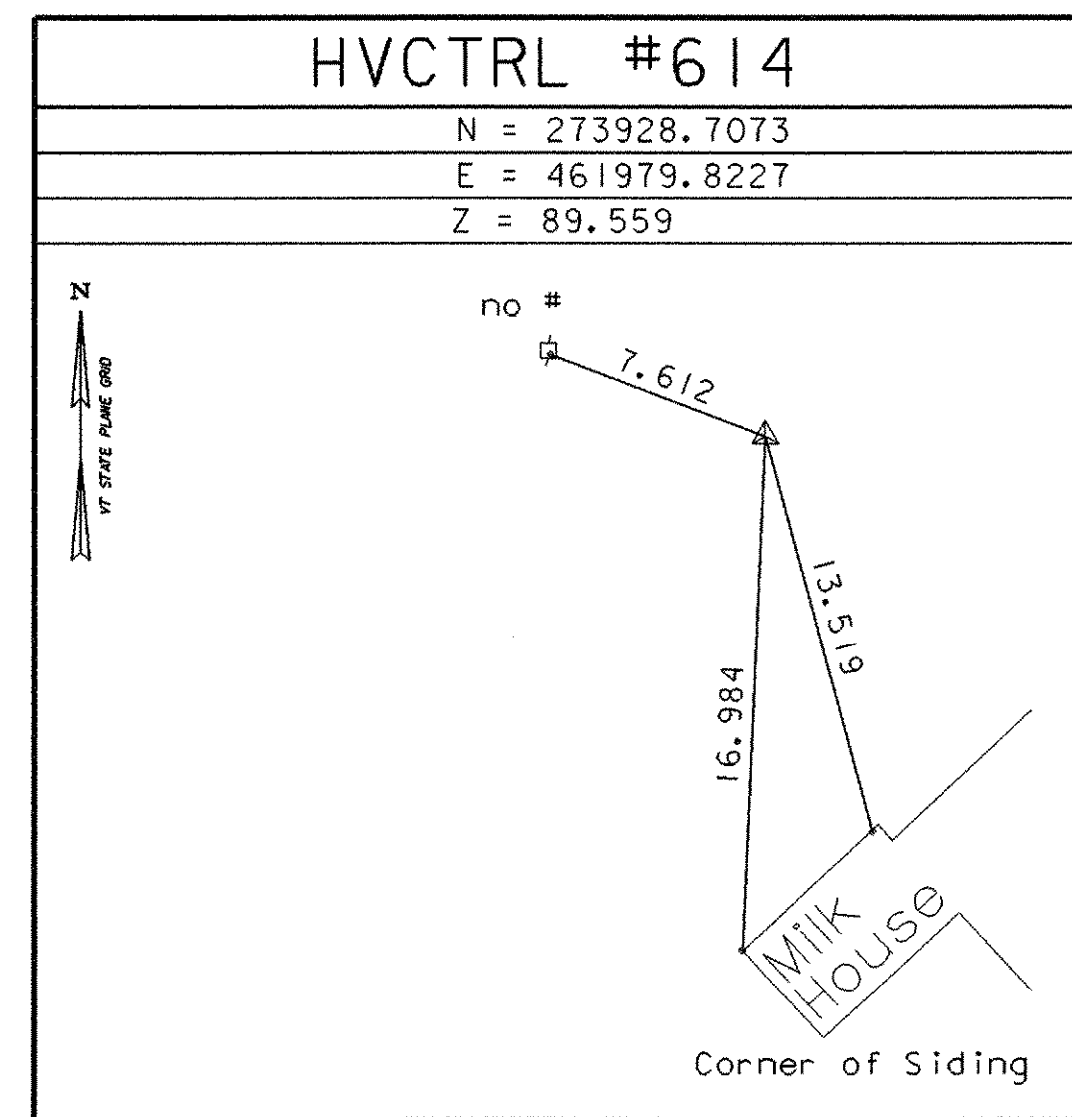
General Location, Franklin, VT.  
 At the front entrance to Haston Library, on south side of steps, in top of granite cap on banister.

\* DESCRIPTION PROVIDED BY VERMONT AGENCY OF TRANSPORTATION GEODETIC SURVEY UNIT

TRAVERSE TIES



TRAVERSE TIES



DATUM  
 VERTICAL NAVD 29  
 HORIZONTAL ASSUMED  
 ADJUSTMENT Compass

\* MAIN TRAVERSE COMPLETED NOVEMBER 2002 BY R.GILMAN & P.WINTERS

ALL TIE DISTANCES ARE IN METERS

PROJECT NAME: Highgate - Franklin  
 PROJECT NUMBER: STP RS 0301(1)sa  
 FILE NAME: 85c060/Survey/xc060t.dgn PLOT DATE: 09-MAY-2005  
 PROJECT LEADER: DRAWN BY: R. Bullock  
 DESIGNED BY: CHECKED BY:  
 SHEET 79 OF 450