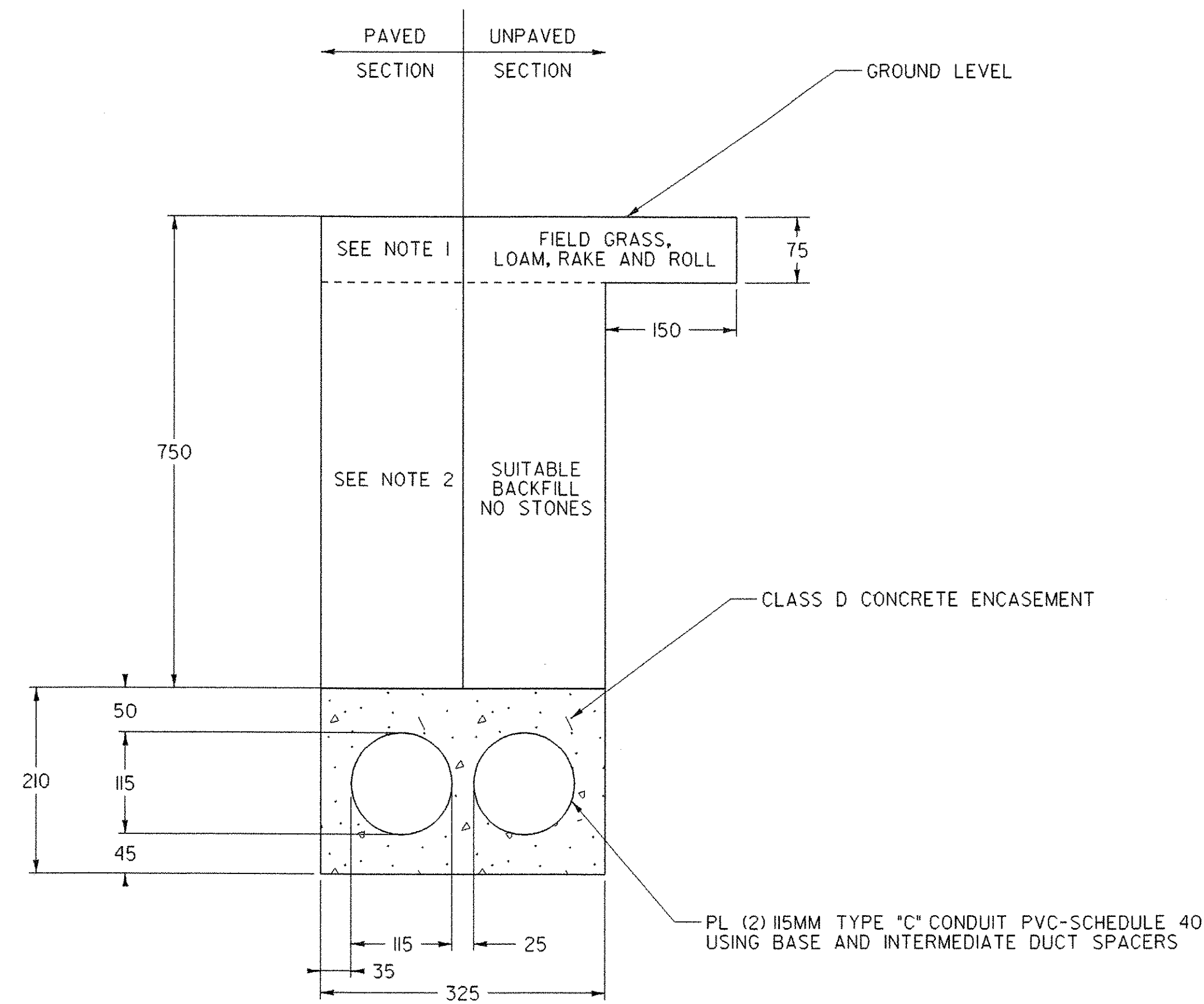


MISCELLANEOUS DETAILS



SLEEVES FOR UTILITIES (115 mm DIAMETER)(MOD)  
(FOR REVISED PROPOSED UNDERGROUND UTILITIES)

NOTES:

1. SEE ROADWAY TYPICAL FOR PAVEMENT TYPES AND THICKNESS.
2. SEE ROADWAY TYPICAL FOR SUBBASE AND SAND THICKNESS.

ALL DIMENSIONS IN mm UNLESS OTHERWISE NOTED.

PROJECT NAME:	HIGHGATE - FRANKLIN
PROJECT NUMBER:	STP RS 030(I) SA
FILE NAME: ...85c060/design/dc060dtl.dgn	PLOT DATE: 09-MAY-2005
PROJECT LEADER: DELLASANTA	DRAWN BY: SQUAD B
DESIGNED BY: SQUAD B	CHECKED BY: SQUAD B
IPARM FILE NAME: dc060dtm.i	SHEET 68 OF 450