

CONSTRUCT DRIVE
 STA ah 14+806.000 LT GRAVEL
 STA ah 14+850.000 RT GRAVEL
 STA ah 14+895.000 LT GRAVEL
 STA ah 14+895.000 RT GRAVEL
 STA ah 14+925.000 LT GRAVEL
 STA ah 14+927.000 RT GRAVEL
 STA ah 15+014.000 RT GRAVEL
 STA ah 15+028.000 LT GRAVEL

REMOVING AND RESETTING FENCE
 STA ah 14+680.000 TO STA ah 14+795.270 LT
 STA ah 14+816.260 TO STA ah 14+883.450 LT
 STA ah 14+680.000 TO STA ah 14+760.000 RT
 STA ah 14+755.440 LT - 6JM BACK
 STA ah 14+850.230 RT - 2M BACK
 STA ah 14+854.190 LT - 6.9M BACK
 STA ah 14+855.100 RT - 1.5M BACK

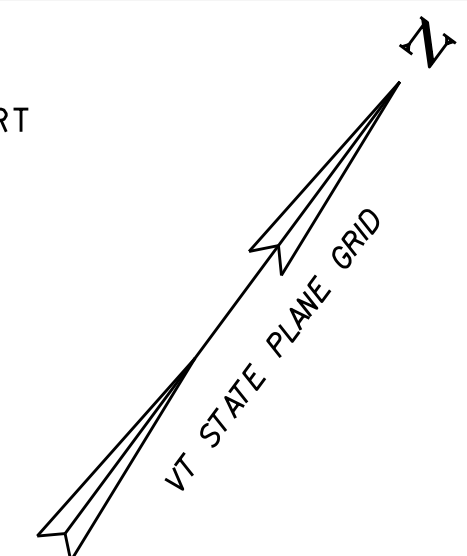
HYDRANT, RELOCATE
 STA ah 14+880.720 RT - MOVE 9.780M BACK FROM CL

REMOVING AND RESETTING FENCE (MOD)
 STA ah 14+957.000 TO STA ah 15+011.000 RT

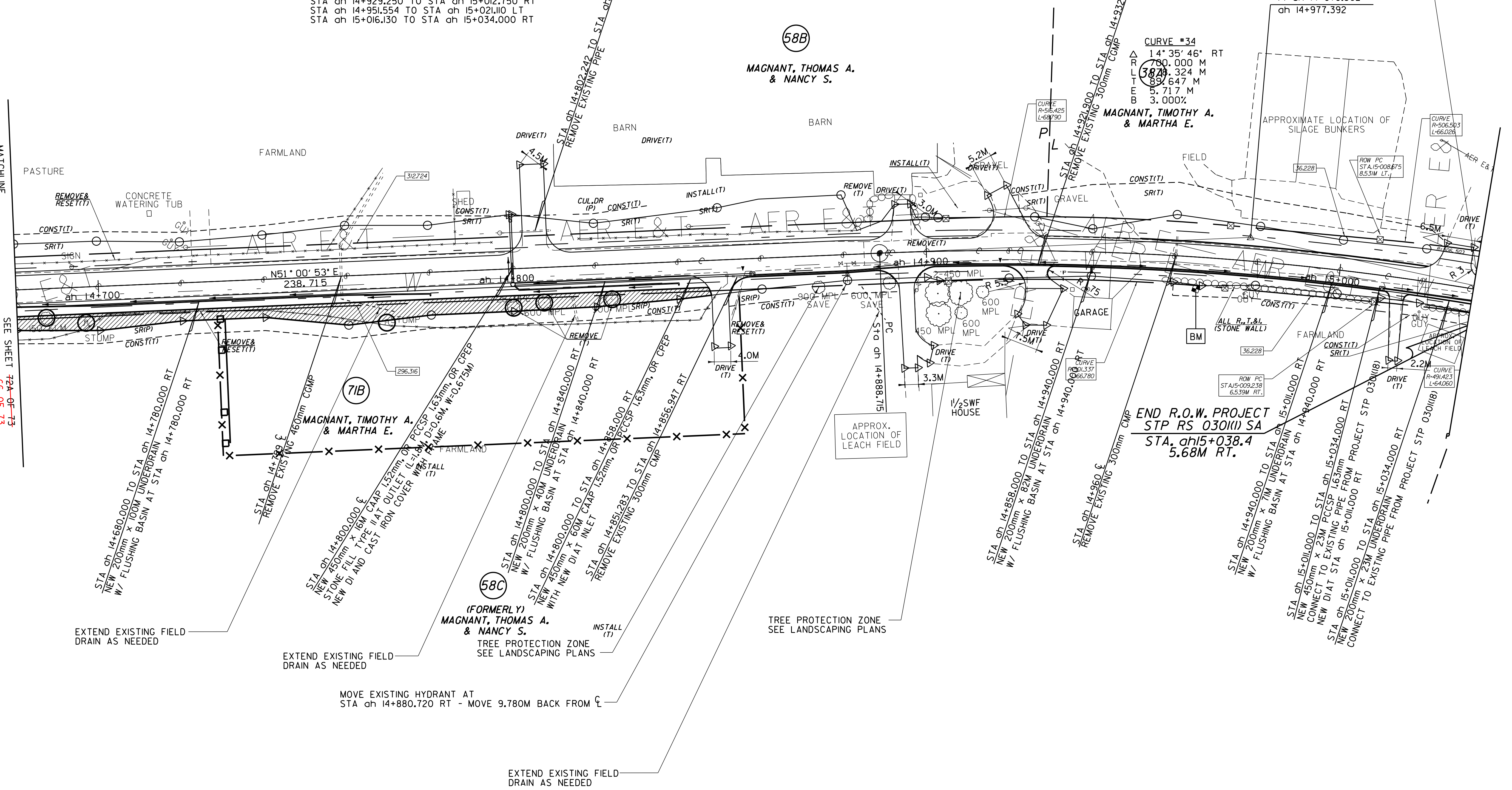
CONSTRUCT SPECIAL DITCH
 STA ah 14+680.000 TO STA ah 14+845.000 RT

VERTICAL GRANITE CURB
 STA ah 14+852.568 TO STA ah 14+892.611 RT
 STA ah 14+898.500 TO STA ah 14+923.630 RT
 STA ah 14+929.250 TO STA ah 15+012.750 RT
 STA ah 14+951.554 TO STA ah 15+021.110 LT
 STA ah 15+016.130 TO STA ah 15+034.000 RT

END PROJECT
 STP RS 0301(I) SA
 TH#3 CL P.O.T. ah 15+034.000
 BEGIN PROJECT
 STP 0301(I)B (2004)



MATCHLINE
SEE SHEET 72A OF 73
66 OF 73

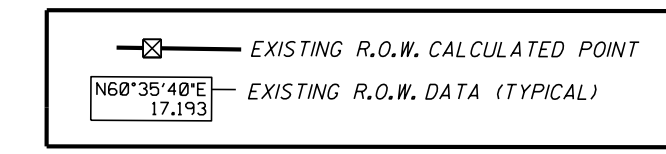


LINES SHOWN ON THIS PLAN AS EXISTING PROPERTY LINES P/L ARE BELIEVED TO BE ACCURATE BUT SHOULD NOT BE RELIED UPON FOR PURPOSES UNRELATED TO THE STATE OF VERMONT'S ACQUISITION OF LAND AND RIGHTS FOR THIS PROJECT.

FOR R.O.W. USE ONLY

○ DENOTES TREE OR STUMP REMOVAL

NOTES:
 1. ALL SIDE ROAD RADII SHALL BE 11M UNLESS OTHERWISE NOTED. REFER TO STD B-12M
 2. ALL DRIVE RADII SHALL BE 6M UNLESS OTHERWISE NOTED. REFER TO STD B-71M



SEE LAYOUT SHEETS FOR CONSTRUCTION CHANGES

(R.O.W. AS BUILT)

PROJECT NAME:	HIGHGATE-FRANKLIN (AS BUILT)
PROJECT NUMBER:	STP RS 0301(I) SA
FILE NAME:	NAME\$DGN
PROJECT LEADER:	DELLASANTA
DESIGNED BY:	SQUAD B
ROW LAYOUT SHEET	26A OF 26 73 OF 73
PLOT DATE:	12-FEB-2014 11:47
DRAWN BY:	N. GARBACH
CHECKED BY:	H. PETROVS
	SHEET 67 73A OF 73 450